

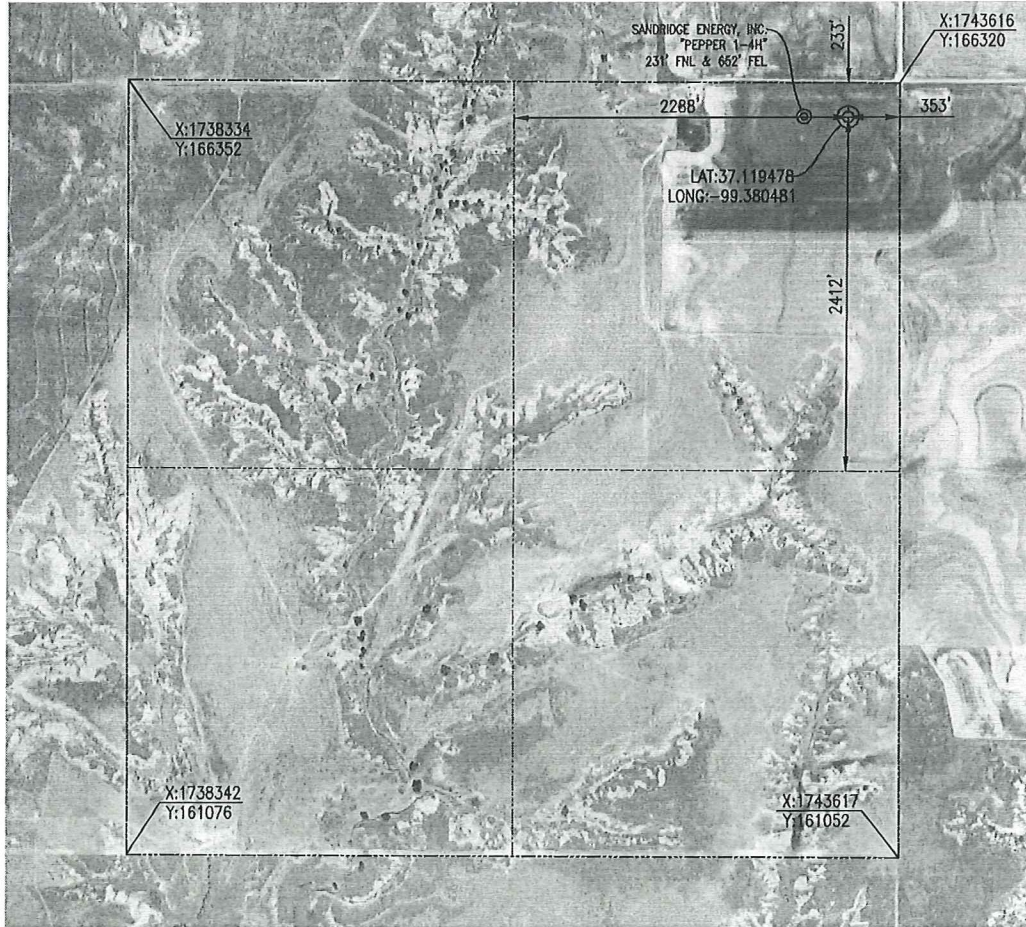
170 Commerce Road, Building 201
 Conway, Arkansas 72032
 501.328.3316 f 501.328.3325 f
 www.craftontull.com



Crafton Tull
 SURVEYING

COMANCHE COUNTY, KANSAS

233' FNL- 353' FEL SECTION 04 TOWNSHIP 34S RANGE 19W 6TH P.M.



THE COORDINATES ARE BASED ON NAD83 STATE PLANE COORDINATE SYSTEM US SURVEY FOOT AS PROCESSED BY OPUS USING THESE STATIONS: D16487 ICT1 WICHITA ICT1 CORP ARP, D16489 ICT2 WICHITA ICT2 CORP ARP, & A19518 LIMNO LIMONT CORP ARP

ELEVATION:
 1992' GR. AT STAKE

OPERATOR: SANDRIDGE ENERGY, INC. WELL NO: 3419 1-4

LEASE NAME: SALT SWD

TOPOGRAPHIC & VEGETATION: LOCATION FELL IN A FIELD

GOOD DRILL SITE: YES REFERENCE STAKES OR ALTERNATE LOCATION STAKES SET: NONE

BEST ACCESSIBILITY TO LOCATION: NORTH LINE

DISTANCE & DIRECTION
 FROM HWY JCT OR TOWN: FROM THE JCT. OF US-183 & KS-1, TRAVEL SOUTH ON KS-1 FOR ±4.0 MILES, TURN RIGHT (WEST) ON AVE R & TRAVEL ±1.0 MILE, TURN LEFT (SOUTH) ON RD 12 & TRAVEL ±1.0 MILE, TURN RIGHT (WEST) ON AVE S & TRAVEL ±2.0 MILES TO THE NE CORNER OF S04, T34S-R19W.

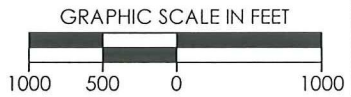
(THE FOLLOWING INFORMATION WAS GATHERED USING A GPS RECEIVER ACCURACY ±2.3 METERS)

GPS DATUM: NAD-27	STATE PLANE COORDINATES: KS-SOUTH
LAT: 37.119478	X: 1743263.224
LONG: -99.380481	Y: 166089.623

DATE STAKED: 04-19-2012



GENERAL NOTES:
 THE TIES AND FOOTAGES SHOWN ON THIS PLAT ARE FROM LINES OF OCCUPATION FROM A SURVEY MADE ON THE GROUND AND / OR BEARING AND DISTANCES FROM THE GENERAL LAND OFFICE PLAT OF THE AREA SHOWN AND MAY NOT BE THE ACTUAL PROPERTY CORNERS. THIS PLAT DOES NOT REPRESENT A TRUE BOUNDARY SURVEY.



REVISION	SandRidge		
	"SALT SWD 3419 1-4" PART OF THE NE 1/4 OF SECTION 04, T-34-S, R-19-W PROPOSED DRILL SITE COMANCHE COUNTY, KANSAS		
	SCALE: 1" = 1000'	PLOT DATE: 05-08-2012	DRAWN BY: S.ANDER
		SHEET NO.: 2	OF 3