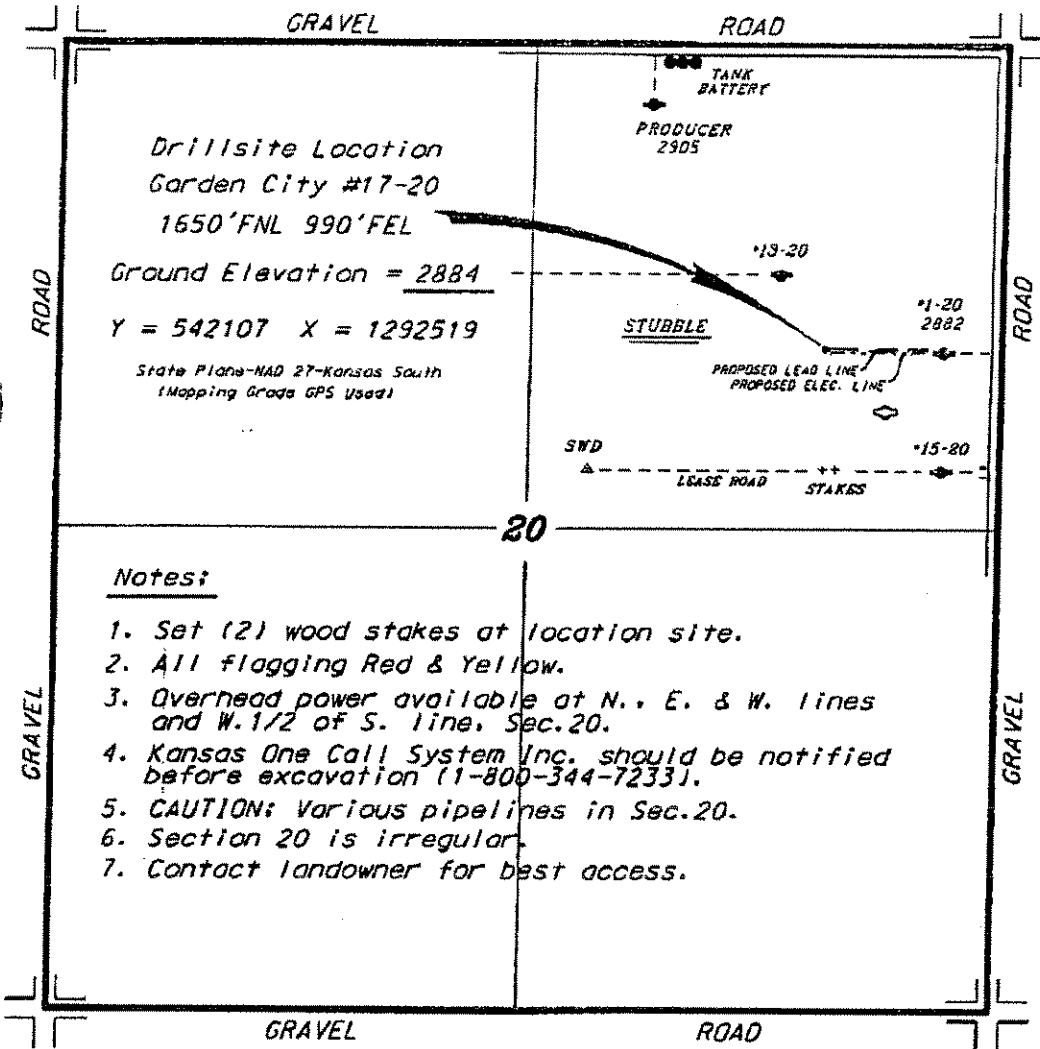


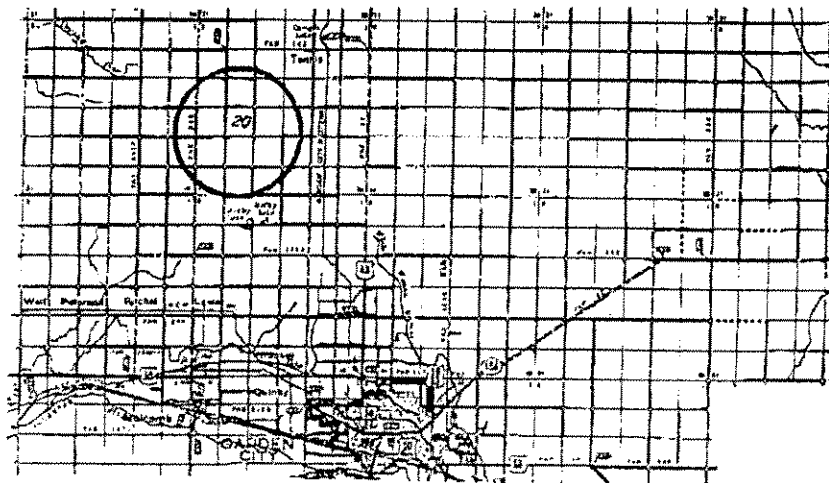
ATLAS OPERATING, LLC  
GARDEN CITY LEASE  
NE. 1/4, SECTION 20, T22S, R33W  
FINNEY COUNTY, KANSAS



Notes:

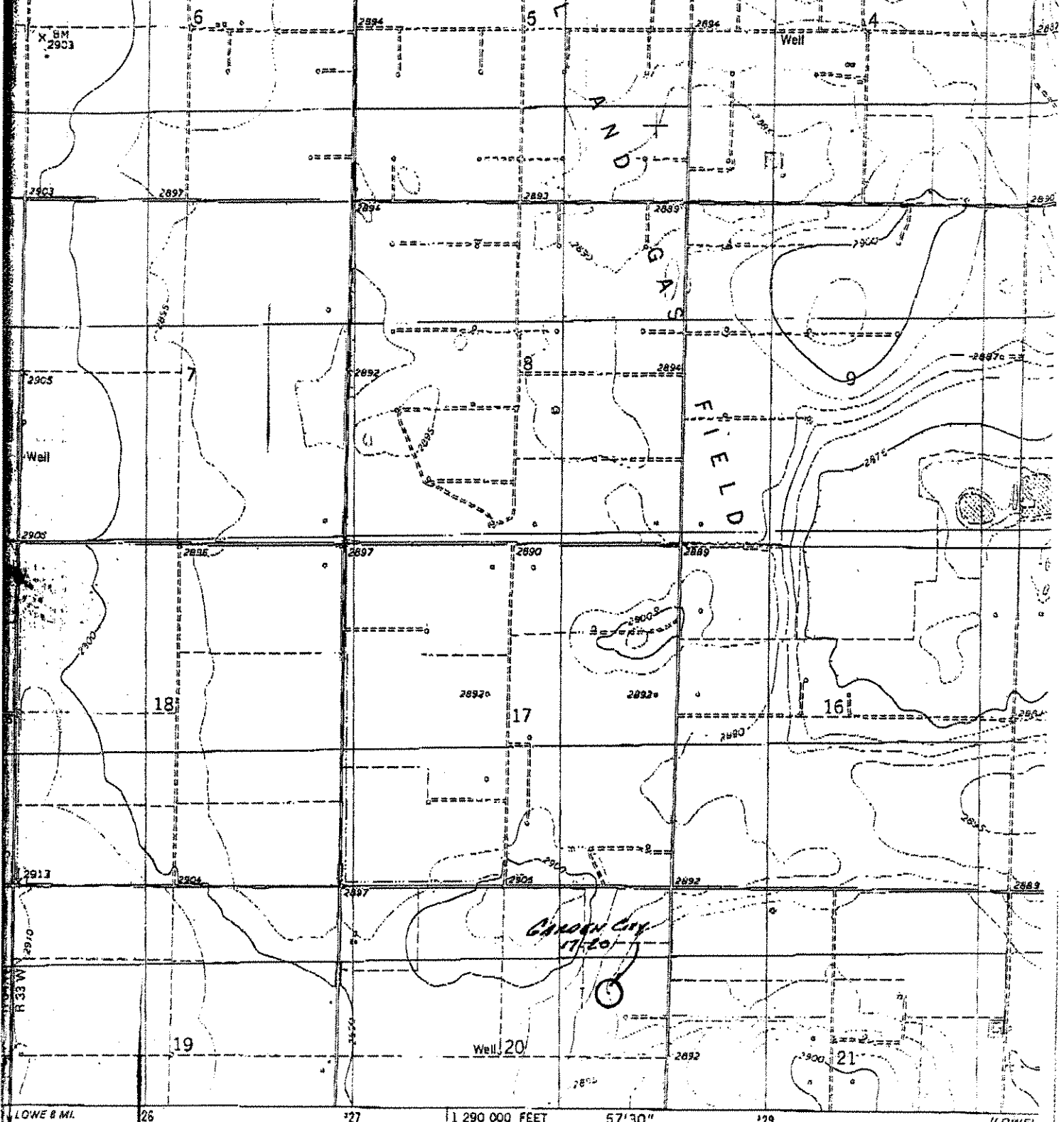
1. Set (2) wood stakes at location site.
2. All flagging Red & Yellow.
3. Overhead power available at N., E. & W. lines and W. 1/2 of S. line, Sec. 20.
4. Kansas One Call System Inc. should be notified before excavation (1-800-344-7233).
5. CAUTION: Various pipelines in Sec. 20.
6. Section 20 is irregular.
7. Contact landowner for best access.

\* Ingress and egress to location as shown on this plot is per usage only and may not be legally opened for public use. Contact landowner, tenant and county road department for access.



• Controlling data is based upon the best field and ancillary data available to us and upon a regular section of land containing 360 acres.

• Approximate section lines were determined using the normal standards of care of a licensed surveyor practicing in the state of Kansas. The section corners, which establish the precise section lines, were not necessarily located, and the exact location of the well-site location in the section is not guaranteed. Therefore, the operator assuming this service and accepting this data and all other parties relying thereon agree to hold Central Kansas Oilfield Services, Inc., its officers and employees harmless from all losses, costs and expenses and said entities released from any liability from negligent or consequential damages.



and published by the Geological Survey  
of the State of Kansas agencies

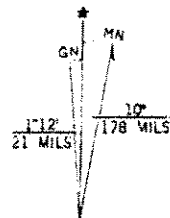
NOS/NOAA

Photometric methods from aerial  
1974. Field checked 1975

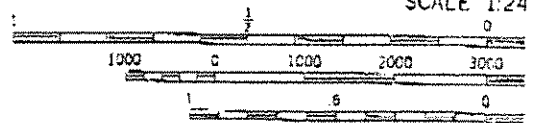
40-foot grid ticks: Kansas coordinate  
(Lambert conformal conic)

Transverse Mercator grid, zone 14  
datum

Indicate selected fence and field lines where



UTM GRID AND 1976 MAGNETIC NORTH  
DECLINATION AT CENTER OF SHEET



(LOWE)  
1860 IN SW  
SCALE 1:24

CONTOUR INTERVAL  
NATIONAL GEODETIC VERTIC

THIS MAP COMPLIES WITH NATIONAL