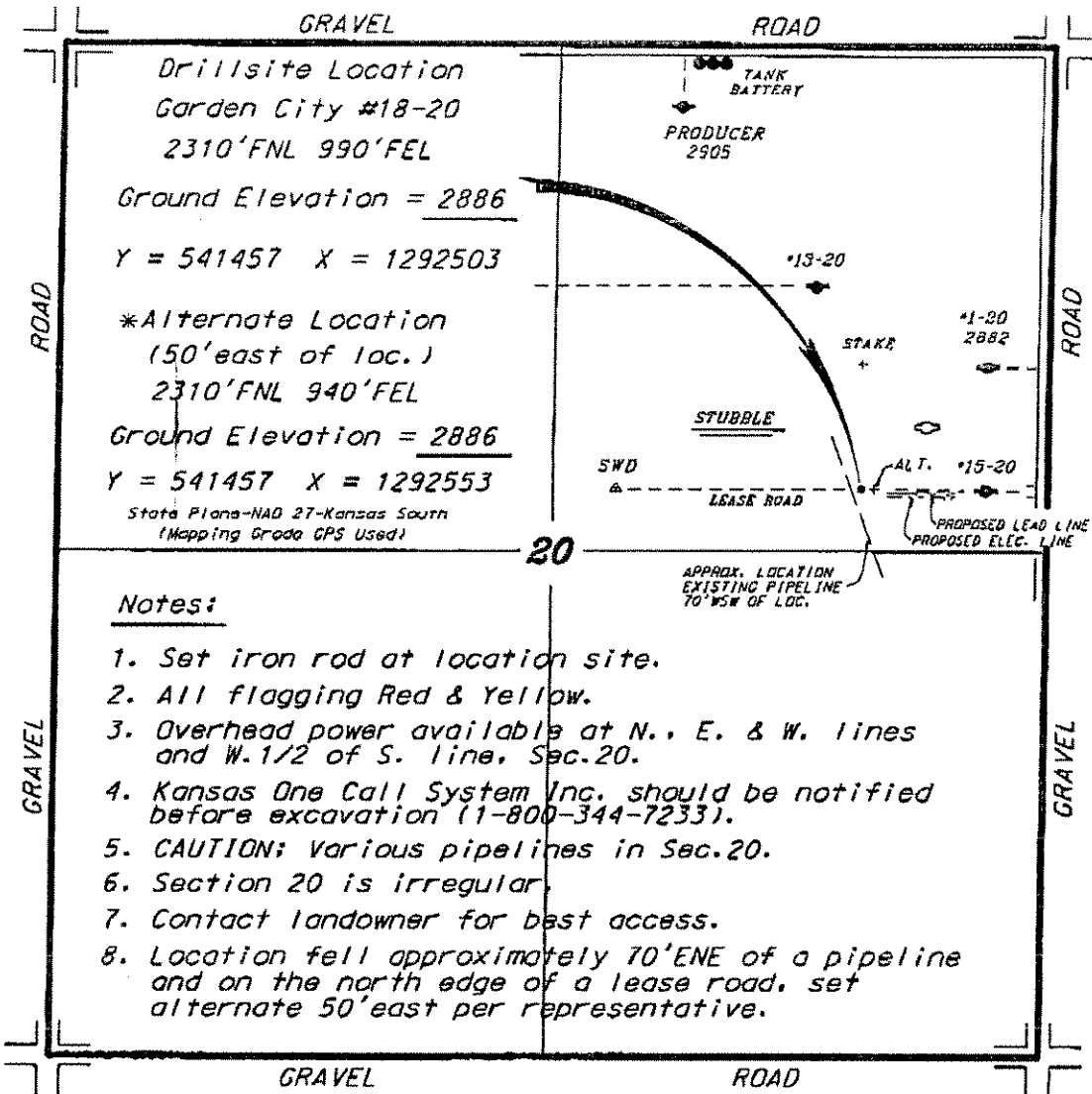
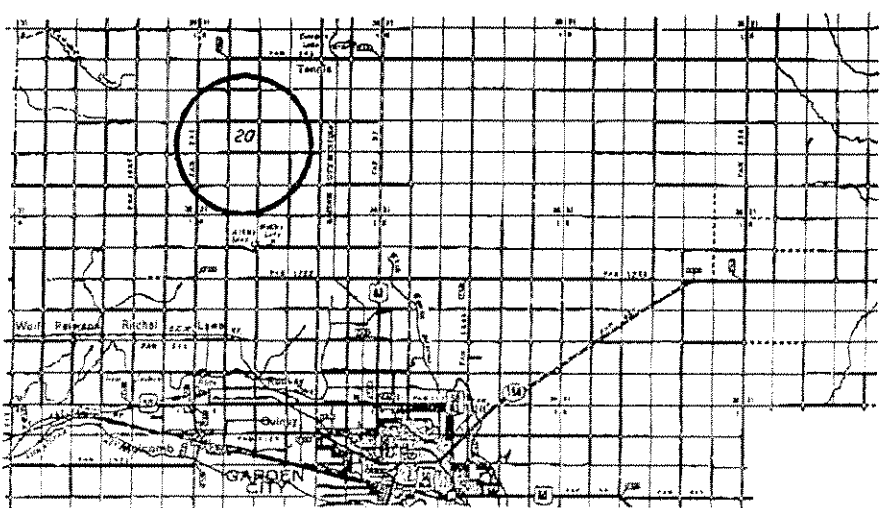
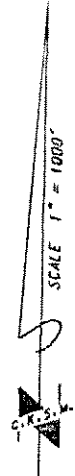


ATLAS OPERATING, LLC
GARDEN CITY LEASE
NE. 1/4, SECTION 20, T22S, R33W
FINNEY COUNTY, KANSAS

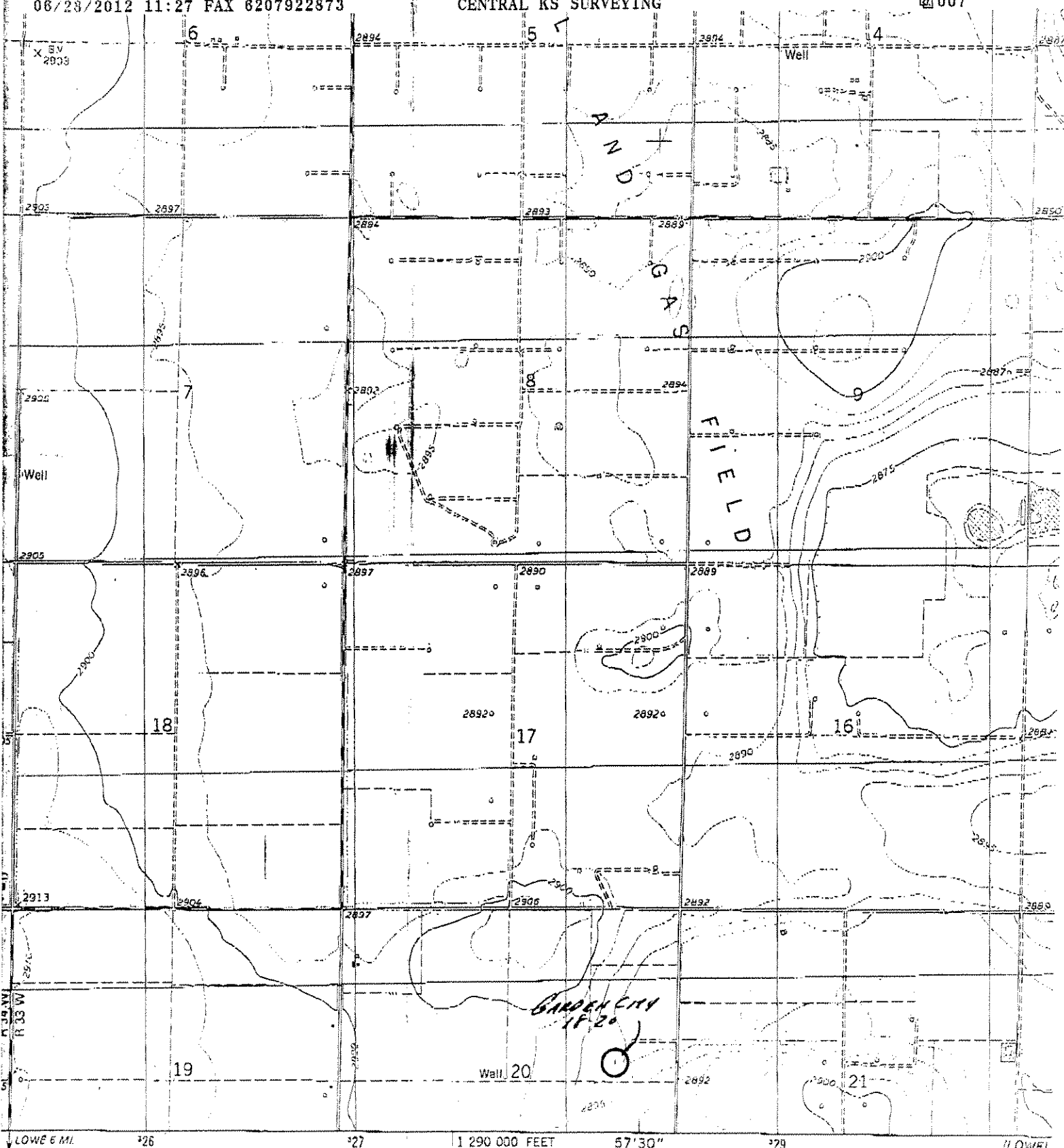


*Ingress and egress to location as shown on this plat is for usage only and may not be legally opened for public use. Contact landowner, tenant and county road department for access.



Controlling data is based upon the best maps and photographs available to us and upon a regular section of land containing 640 acres.

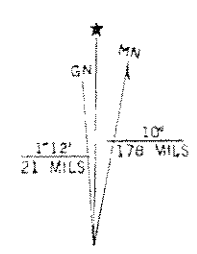
Appropriate section lines were determined using the normal standards of care of oilfield surveyors practicing in the state of Kansas. The section corners, which establish the precise section lines, were not necessarily located, and the exact location of the ultimate location in the section is not guaranteed. Therefore, the operator accepting this service and accepting this plat and all other parties relying thereon agree to hold Central Kansas Oilfield Services, Inc., its officers and employees harmless from all losses, costs and expenses and said entities released from any liability from incidental or consequential damages.



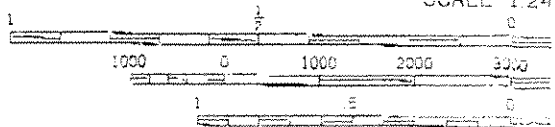
and published by the Geological Survey
th State of Kansas agencies

NOS/NOAA
 Parametric methods from aerial
 4. Field checked 1976
 10-foot grid ticks: Kansas coordinate
 (Lambert conformal conic)
 Transverse Mercator grid, zone 14
 datum

indicate selected fence and field lines where



UTM GRID AND 1976 MAGNETIC NORTH
DECLINATION AT CENTER OF SHEET



(LOWE)
5500 III SA
SCALE 1:24

CONTOUR INTERVAL
NATIONAL GEODETIC VERTIC

THIS MAP CONFORMS WITH NATIONAL