

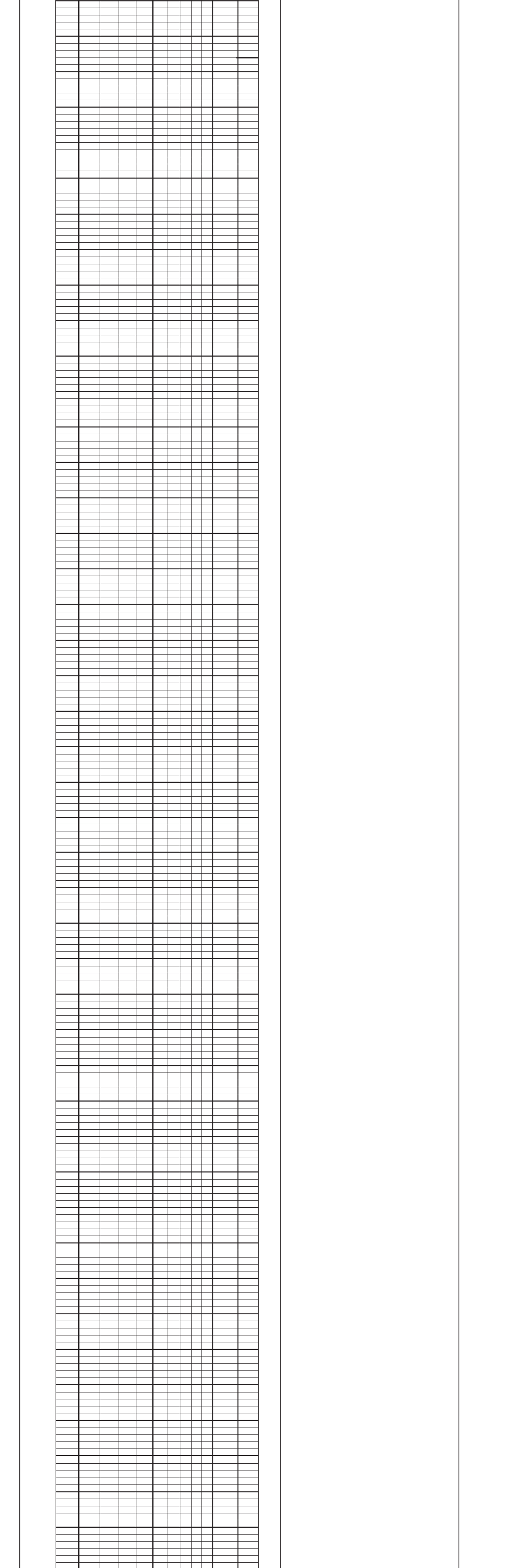
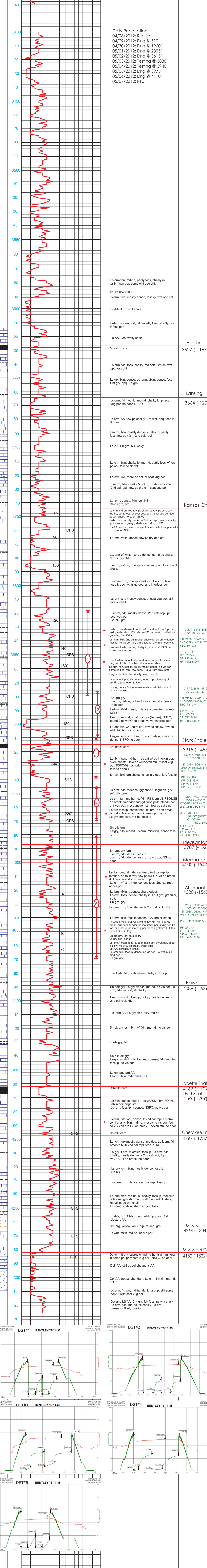
GEOLOGIST'S REPORT
DRILLING TIME AND SAMPLE LOG

Geologist on Well: Christina Goodrich		ELEVATIONS	
LEASE: Bentley #1-135	TO: 2460	FROM: 2460	
FIELD: 1125' FSL & 3N5' FEL	DF: _____		
LOCATION: 3.5 TMSW 1.5S REE 28W	GL: 2451		
SOC: _____	STATE: Kansas		
COUNTRY: _____	CONTRACTOR: Duke Drilling Rig #4		Measurements are All From Kelly Bushing
SPUD: 04/28/2012	COMPL: 05/07/2012		
RTD: 4/29/12	LTD: 4/29/12	CONDUCTOR: _____	
MUD UP: _____	TYPE MUD: CHEMICAL	SURFACE: 8.58" @ 216'	
SAMPLES SAVED FROM: 3600'	TO: TD	PRODUCTION: 4.1/2"	
DRILLING TIME KEPT FROM: 3600'	TO: TD		ELECTRICAL SURVEYS
SAMPLES EXAMINED FROM: 3600'	TO: TD		
GEOLOGICAL SUPERVISION FROM: 3650' - TD			Superior Well Services Diamonrd, Testing Ltd
REFERENCE WELL: Bentley A # 1-36			
Formation	Sample Tops	E-log Tops	Strat
Anhydrite	1882 (-578)	1882 (-578)	+12
Base Anhydrite	1919 (+541)	1914 (+546)	+13
Heebner	3627 (-1167)	3628 (-1165)	+17
Laming	3654 (-1204)	3654 (-1204)	+12
Stark Shale	3915 (-1455)	3919 (-1459)	+10
Marmaton	3987 (-1527)	3991 (-1527)	+13
Pleasanton	4000 (-1540)	4001 (-1541)	+10
Fort Scott	4171 (-1711)	4171 (-1711)	+2
Mississippi Dol	4264 (-1822)	4265 (-1825)	+2

REMARKS
 The Bentley "B" #1-35 was drilled as a wildcat location to explore for Lansing and Mississippi production. Based on the positive structural position and the results of DST#4, it was decided to run production casing. Ran 101 its new 4-1/2" 10.5# csg w/float shoe on bottom & insert baffle in first collar. Tagged bottom & pulled up 20' setting csg at 4305', baffle at 4262'. PC at 1836'. Ran cmt baskets above float shoe and below PC. Ran centralizers on collars #1,2,3,4,5,7,9,11,13,15, and above and below PC. Swift pumped 500 gal mud flush followed by 195 sx EA-2 containing 10% salt. 5% caiseal, 1/4# flocele, 1/2% CFR. Plugged rat hole with 35 sx. Plug down 6:00 P.M. 5/7/2012.
 Sincerely,
 Christina Goodrich, Geologist

LEGEND

	Anhydrite		Sandstone		Limestone		Shale		Carb Sh		Cherty LS		Chert		Dolomite
--	-----------	--	-----------	--	-----------	--	-------	--	---------	--	-----------	--	-------	--	----------



DST#1 BENTLEY "B" 1-35	DST#2 BENTLEY "B" 1-35
DST#3 BENTLEY "B" 1-35	DST#4 BENTLEY "B" 1-35
DST#5 BENTLEY "B" 1-35	