



**TRILOBITE
TESTING, INC.**

DRILL STEM TEST REPORT

Caerus Ks.LLC

36-24s-13w Stafford Ks.

P.O.ox 1378
Hays Ks.67601

Harrison #36-23

Job Ticket: 47546

DST#: 2

ATTN: Roger Fisher

Test Start: 2012.06.13 @ 13:26:48

GENERAL INFORMATION:

Formation: **Lans D - F**

Deviated: No Whipstock: ft (KB)

Time Tool Opened: 16:13:18

Time Test Ended: 23:22:03

Test Type: Conventional Straddle (Reset)

Tester: Gary Pevoteaux

Unit No: 56

Interval: 3640.00 ft (KB) To 3665.00 ft (KB) (TVD)

Reference Elevations: 1922.00 ft (KB)

Total Depth: 3688.00 ft (KB) (TVD)

1909.00 ft (CF)

Hole Diameter: 7.88 inches Hole Condition: Fair

KB to GR/CF: 13.00 ft

Serial #: 8649

Inside

Press @ Run Depth: 169.32 psig @ 3641.00 ft (KB)

Capacity: 8000.00 psig

Start Date: 2012.06.13

End Date:

2012.06.13

Last Calib.:

2012.06.13

Start Time:

13:26:53

End Time:

23:22:03

Time On Btm:

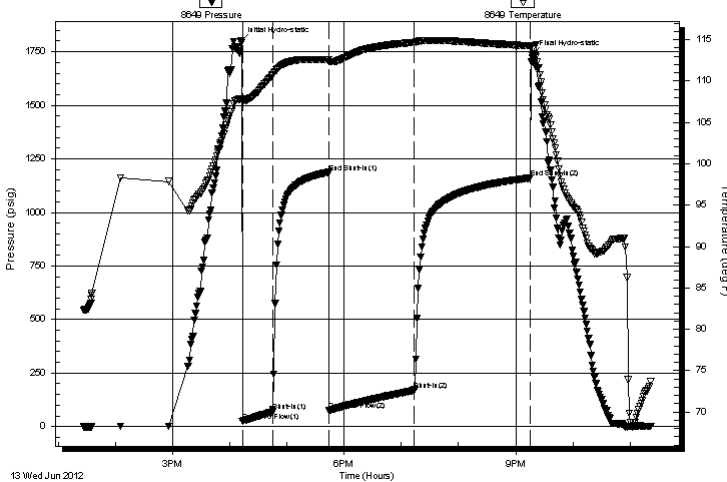
2012.06.13 @ 16:11:48

Time Off Btm:

2012.06.13 @ 21:17:18

TEST COMMENT: IF:Weak to fair blow . Increase to 8 - 9".
IS:No blow .
FF:Weak to fair blow . Increase to 13".
FS:No blow .

Pressure vs. Time



PRESSURE SUMMARY

Time (Min.)	Pressure (psig)	Temp (deg F)	Annotation
0	1797.12	107.83	Initial Hydro-static
2	23.52	107.49	Open To Flow (1)
34	69.36	110.70	Shut-In(1)
92	1187.56	112.56	End Shut-In(1)
93	74.41	112.35	Open To Flow (2)
182	169.32	114.65	Shut-In(2)
304	1161.00	114.25	End Shut-In(2)
306	1737.57	114.25	Final Hydro-static

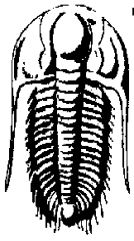
Recovery

Length (ft)	Description	Volume (bbl)
372.00	SW / Rw .09 ohms @75deg	5.22
0.00	Oil scum @ top of recovery	0.00

Gas Rates

	Choke (inches)	Pressure (psig)	Gas Rate (Mcf/d)

* Recovery from multiple tests



TRILOBITE
TESTING, INC.

DRILL STEM TEST REPORT

Caerus Ks.LLC

36-24s-13w Stafford Ks.

P.O.ox 1378
Hays Ks.67601

Harrison #36-23

Job Ticket: 47546

DST#: 2

ATTN: Roger Fisher

Test Start: 2012.06.13 @ 13:26:48

GENERAL INFORMATION:

Formation: **Lans D - F**

Deviated: No Whipstock: ft (KB)

Test Type: Conventional Straddle (Reset)

Time Tool Opened: 16:13:18

Tester: Gary Pevoteaux

Time Test Ended: 23:22:03

Unit No: 56

Interval: **3640.00 ft (KB) To 3665.00 ft (KB) (TVD)**

Reference Elevations: 1922.00 ft (KB)

Total Depth: 3688.00 ft (KB) (TVD)

1909.00 ft (CF)

Hole Diameter: 7.88 inches Hole Condition: Fair

KB to GR/CF: 13.00 ft

Serial #: 8352 Below (Straddle)

Press @RunDepth: psig @ 3666.00 ft (KB)

Capacity: 8000.00 psig

Start Date: 2012.06.13

End Date: 2012.06.13

Last Calib.: 2012.06.13

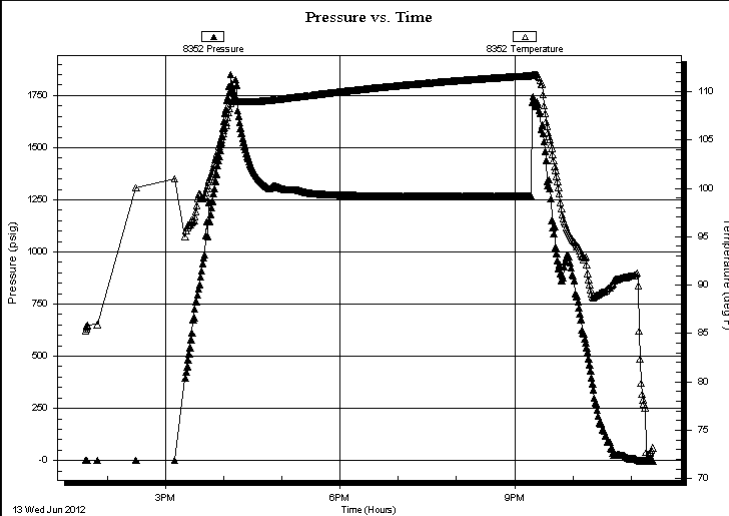
Start Time: 13:37:34

End Time: 23:22:44

Time On Btm:

Time Off Btm:

TEST COMMENT: IF:Weak to fair blow . Increase to 8 - 9".
IS:No blow .
FF:Weak to fair blow . Increase to 13".
FS:No blow .



PRESSURE SUMMARY

Time (Min.)	Pressure (psig)	Temp (deg F)	Annotation

Recovery

Gas Rates

Length (ft)	Description	Volume (bbl)
372.00	SW / Rw .09 ohms @75deg	5.22
0.00	Oil scum @ top of recovery	0.00

	Choke (inches)	Pressure (psig)	Gas Rate (Mcf/d)

* Recovery from multiple tests



**TRILOBITE
TESTING, INC.**

DRILL STEM TEST REPORT

FLUID SUMMARY

Caerus Ks.LLC

36-24s-13w Stafford Ks.

P.O.ox 1378
Hays Ks.67601

Harrison #36-23

Job Ticket: 47546

DST#: 2

ATTN: Roger Fisher

Test Start: 2012.06.13 @ 13:26:48

Mud and Cushion Information

Mud Type: Gel Chem

Cushion Type:

Oil API:

deg API

Mud Weight: 9.00 lb/gal

Cushion Length:

ft

Water Salinity:

83000 ppm

Viscosity: 53.00 sec/qt

Cushion Volume:

bbbl

Water Loss: 9.19 in³

Gas Cushion Type:

Resistivity: 0.00 ohm.m

Gas Cushion Pressure:

psig

Salinity: 7000.00 ppm

Filter Cake: 0.20 inches

Recovery Information

Recovery Table

Length ft	Description	Volume bbl
372.00	SW / Rw .09 ohms @75deg	5.218
0.00	Oil scum @ top of recovery	0.000

Total Length: 372.00 ft

Total Volume: 5.218 bbl

Num Fluid Samples: 0

Num Gas Bombs: 0

Serial #: none

Laboratory Name:

Laboratory Location:

Recovery Comments:

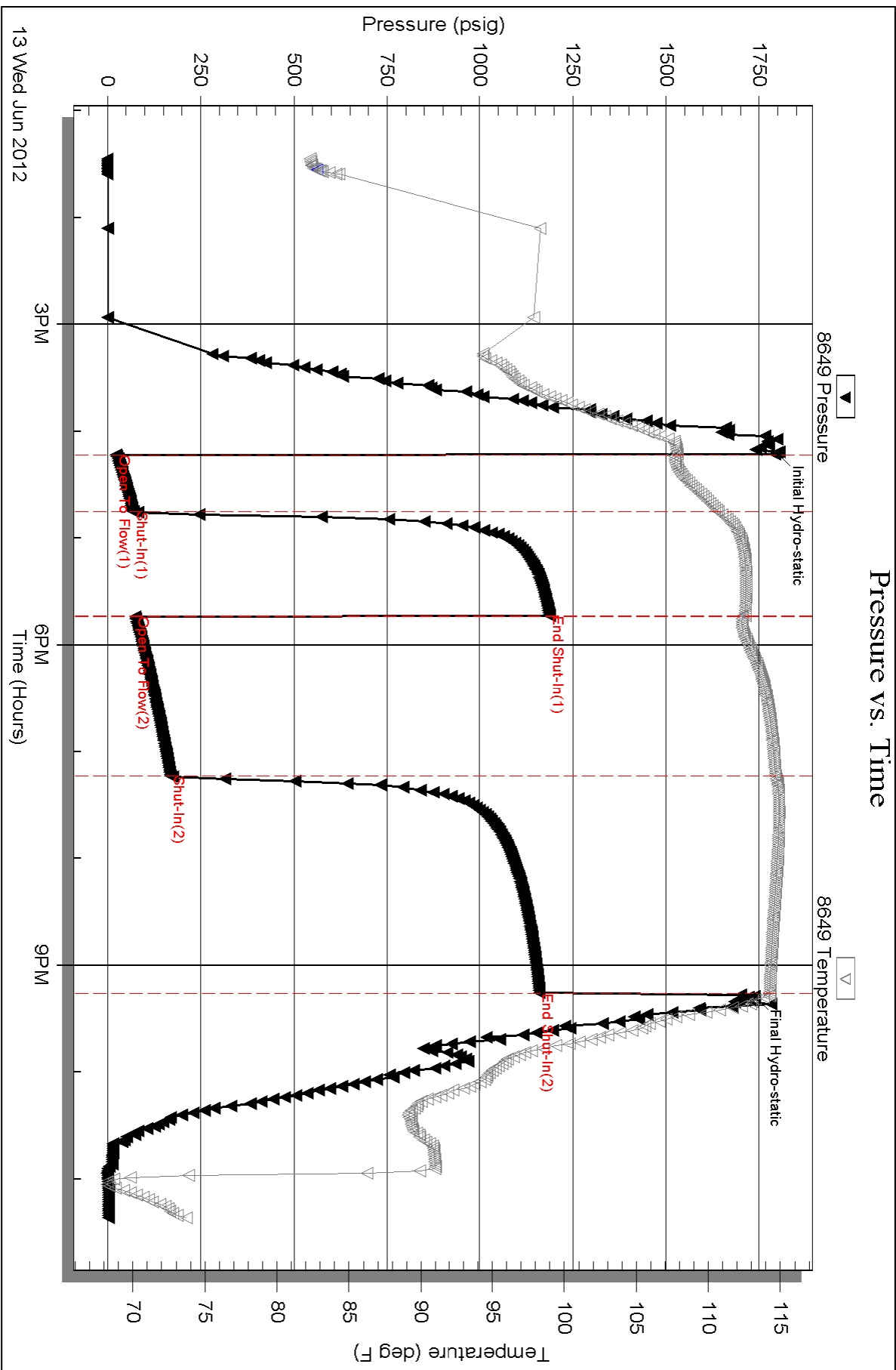
Serial #: 8649

Inside

Caerus Ks, LLC

Harrison #36-23

DST Test Number: 2



Serial #: 8352

Below (Str ~~at~~ Ks, LLC

Harrison #36-23

DST Test Number: 2

