



GEOLGISTS REPORT
DRILL TIME &
SAMPLE LOG

COMPANY **COBALT ENERGY LLC**
LEASE **Terry 'A' #1-1**
FIELD **Wildcat**

ELEVATIONS
KB **2400'**
DF _____

LOCATION **2222' FNL & 1640' FWL**
SEC. **1** TWP **11S** RGE **25W**
COUNTY **Trego** STATE **KS**
CONTRACTOR **Martin Drilling - Rig #16**

GL **2395'**
Measurements Are All From **KB**

RTD **4205'** LTD **4204'**
SPUD **6/01/12** COMP **06/09/12**
MUD UP **3290'** TYPE MUD **Chemical**

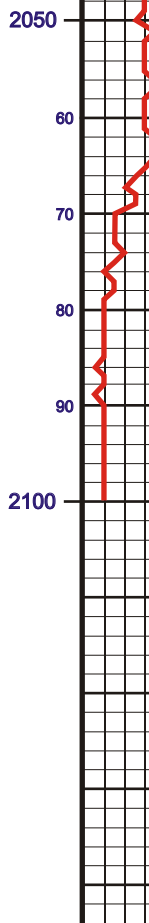
CASING
Conductor **NA**
Surface **8 5/8" @ 218'**
Production **4 1/2" @ 1199'**

SAMPLES SAVED FROM **3600'** TO **RTD**
DRILLING TIME KEPT FROM **3600'** TO **RTD**
SAMPLING EXAMINED FROM **3600'** TO **RTD**

Geological Supervision From **3600'** to **RTD**
Geological Supervisor **Gregory N. Baker**
Log-Book (Pioneer Wireline)

FORMATION TOPS
Anhydrite **2027 (+373)**
Base of Anhydrite **2063 (+337)**
Heebner **3702 (-1302)**
Lansing **3727 (-1327)**
Stark **3928 (-1528)**
BKC **3961 (-1581)**
Fort Scott **4185 (-1781)**
RTD **4204 (-1804)**

ELECTRIC LOG
2027 (+373)
2063 (+337)
3702 (-1302)
3727 (-1327)
3728 (-1328)
3928 (-1528)
3961 (-1581)
4185 (-1781)
4204 (-1804)

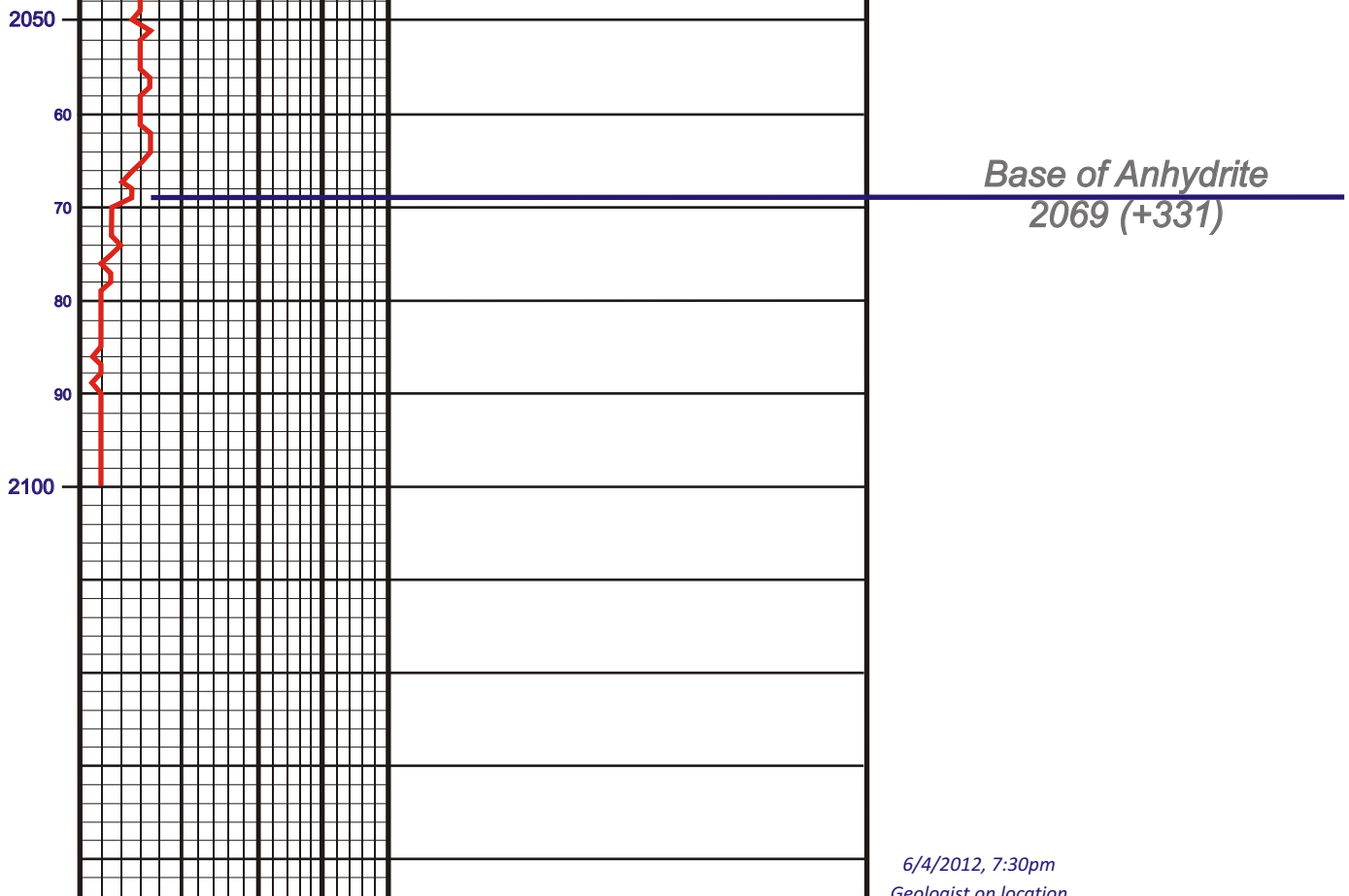


REMARKS
Based on results of DST #1, #4, sample descriptions and log review, it was decided by all parties that production casing be set to further test the potential of the Terry 'A' #1-1.

Drill Stem testing done by Jeff Brown of Trilobite Testing.
Respectfully Submitted,
Corey Baker
Petroleum Geologist

API #15-195-22778-00-00

LEGEND



Main log table with columns: LITHOLOGY, DEPTH, OIL SHOWS, SAMPLE DESCRIPTION, REMARKS. Includes depth scale from 2000 to 4200 feet and detailed sample descriptions.

Summary table with columns: LITHOLOGY, DEPTH, OIL SHOWS, SAMPLE DESCRIPTION, REMARKS. Contains a condensed version of the log data.

Company **COBALT ENERGY, LLC** Elevation **2400' KB**
Location **Terry 'A' #1-1**
Location **2222' FNL & 1640' FWL** SEC. **1** TWP **11S** RGE **25W**
County **Trego** State **Kansas**