



**TRILOBITE  
TESTING, INC.**

# DRILL STEM TEST REPORT

Shakespear Oil Co.

**S22-15-33 Logan, KS**

202 W. Main St.  
Salem, IL 62881

**Zanobia #1-22**

Job Ticket: 48928

**DST#: 3**

ATTN: Tim Priest

Test Start: 2012.07.07 @ 22:56:00

## GENERAL INFORMATION:

Formation: **LKC 'L'**

Deviated: No Whipstock: ft (KB)

Time Tool Opened: 01:02:50

Time Test Ended: 06:46:50

Test Type: Conventional Bottom Hole (Reset)

Tester: Chuck Smith

Unit No: 62

**Interval: 4100.00 ft (KB) To 4122.00 ft (KB) (TVD)**

Reference Elevations: 2813.00 ft (KB)

Total Depth: 4122.00 ft (KB) (TVD)

2803.00 ft (CF)

Hole Diameter: 7.88 inches Hole Condition: Good

KB to GR/CF: 10.00 ft

**Serial #: 8018 Inside**

Press @ Run Depth: 98.29 psig @ 4102.00 ft (KB)

Capacity: 8000.00 psig

Start Date: 2012.07.07

End Date:

2012.07.08

Last Calib.: 2012.07.08

Start Time: 22:56:02

End Time:

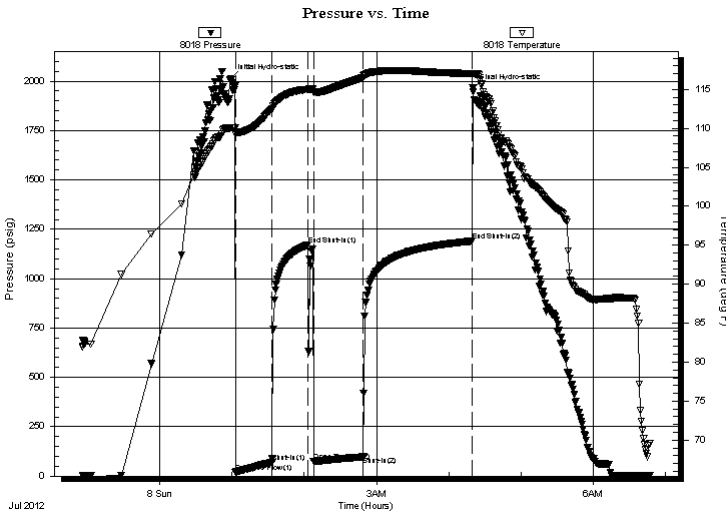
06:46:50

Time On Btm: 2012.07.08 @ 00:59:00

Time Off Btm: 2012.07.08 @ 04:20:00

**TEST COMMENT:** 4" Blow.  
No return.  
4" Blow.  
Weak return died @ 4 min.

## PRESSURE SUMMARY



Time (Min.)	Pressure (psig)	Temp (deg F)	Annotation
0	2013.89	110.06	Initial Hydro-static
4	19.11	109.26	Open To Flow (1)
35	69.76	112.47	Shut-In(1)
64	1171.18	115.01	End Shut-In(1)
69	73.90	114.55	Open To Flow (2)
110	98.29	116.50	Shut-In(2)
201	1189.98	117.02	End Shut-In(2)
201	1964.15	117.07	Final Hydro-static

## Recovery

Length (ft)	Description	Volume (bbl)
0.00	RW: .227 @ 70 Degrees F = 34000PPM	0.00
182.00	OSMW 40m 60w	1.44
10.00	OCWM 2o 15w 83m	0.14

\* Recovery from multiple tests

## Gas Rates

	Choke (inches)	Pressure (psig)	Gas Rate (Mcf/d)





**TRILOBITE  
TESTING, INC.**

# DRILL STEM TEST REPORT

**FLUID SUMMARY**

Shakespear Oil Co.

**S22-15-33 Logan, KS**

202 W. Main St.  
Salem, IL 62881

**Zanobia #1-22**

Job Ticket: 48928

**DST#: 3**

ATTN: Tim Priest

Test Start: 2012.07.07 @ 22:56:00

## Mud and Cushion Information

Mud Type: Gel Chem

Cushion Type:

Oil API:

deg API

Mud Weight: 9.00 lb/gal

Cushion Length:

ft

Water Salinity:

34000 ppm

Viscosity: 49.00 sec/qt

Cushion Volume:

bbbl

Water Loss: 12.79 in<sup>3</sup>

Gas Cushion Type:

Resistivity: ohm.m

Gas Cushion Pressure:

psig

Salinity: 14000.00 ppm

Filter Cake: 2.00 inches

## Recovery Information

Recovery Table

Length ft	Description	Volume bbbl
0.00	RW:.227 @ 70 Degrees F = 34000PPM	0.000
182.00	OSMW 40m 60w	1.442
10.00	OCWM 2o 15w 83m	0.140

Total Length: 192.00 ft

Total Volume: 1.582 bbl

Num Fluid Samples: 0

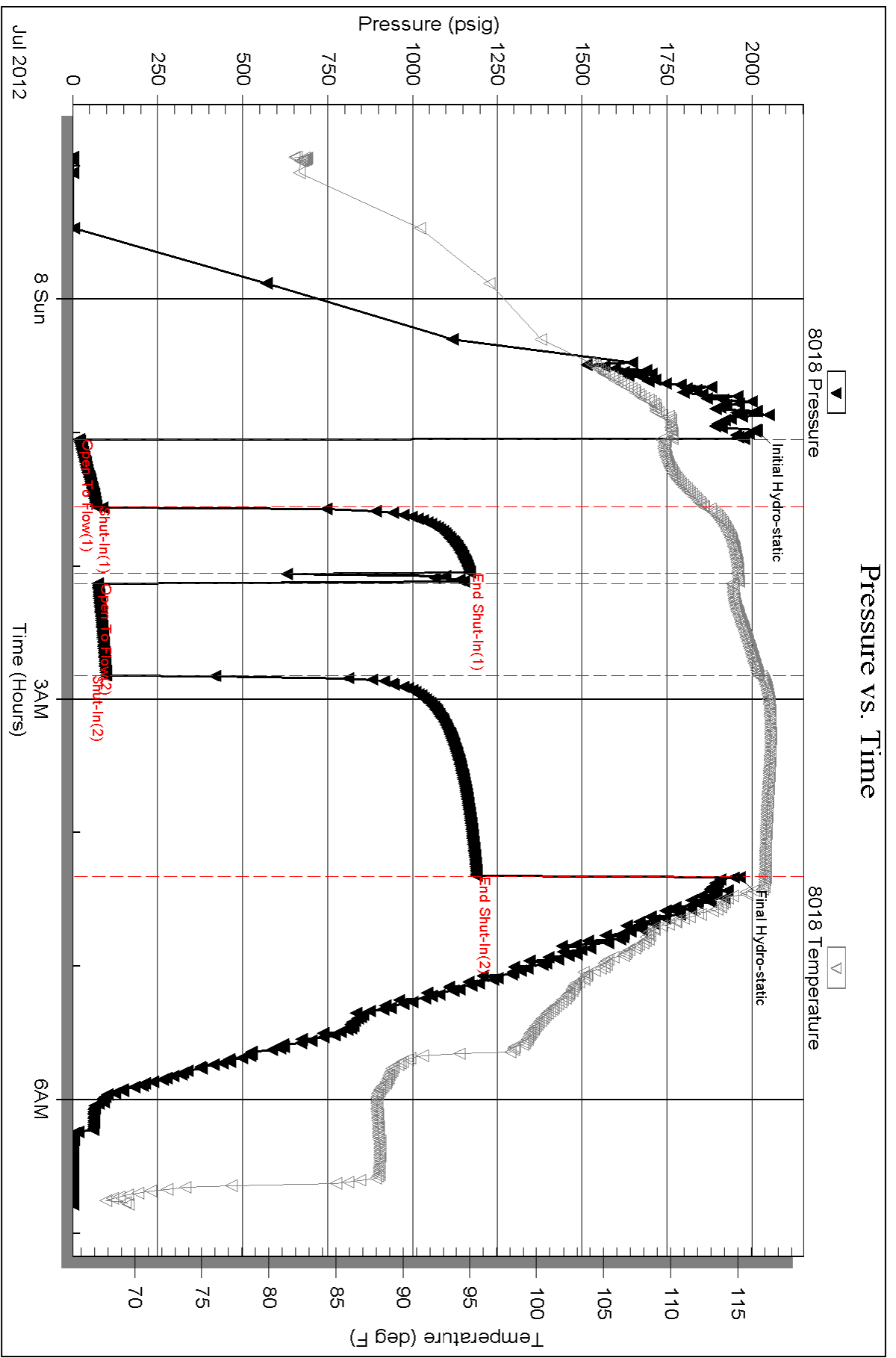
Num Gas Bombs: 0

Serial #:

Laboratory Name:

Laboratory Location:

Recovery Comments:



Serial #: 6751

Outside Shakespeare Oil Co.

Zanobia #1-22

DST Test Number: 3

