



**TRILOBITE  
TESTING, INC.**

# DRILL STEM TEST REPORT

Shakespear Oil Co.

**S22-15-33 Logan, KS**

202 W. Main St.  
Salem, IL 62881

**Zanobia #1-22**

Job Ticket: 48929

**DST#: 4**

ATTN: Tim Priest

Test Start: 2012.07.08 @ 18:36:00

## GENERAL INFORMATION:

Formation: **Marmaton**

Deviated: No Whipstock: ft (KB)

Time Tool Opened: 20:27:10

Time Test Ended: 00:39:00

Test Type: Conventional Bottom Hole (Reset)

Tester: Chuck Smith

Unit No: 62

**Interval: 4152.00 ft (KB) To 4190.00 ft (KB) (TVD)**

Total Depth: 4190.00 ft (KB) (TVD)

Hole Diameter: 7.88 inches Hole Condition: Good

Reference Elevations: 2813.00 ft (KB)

2803.00 ft (CF)

KB to GR/CF: 10.00 ft

**Serial #: 8018**

**Inside**

Press @ Run Depth: 17.54 psig @ 4154.00 ft (KB)

Start Date: 2012.07.08

End Date:

2012.07.09

Start Time: 18:36:02

End Time:

00:39:00

Capacity: 8000.00 psig

Last Calib.: 2012.07.09

Time On Btm: 2012.07.08 @ 20:22:30

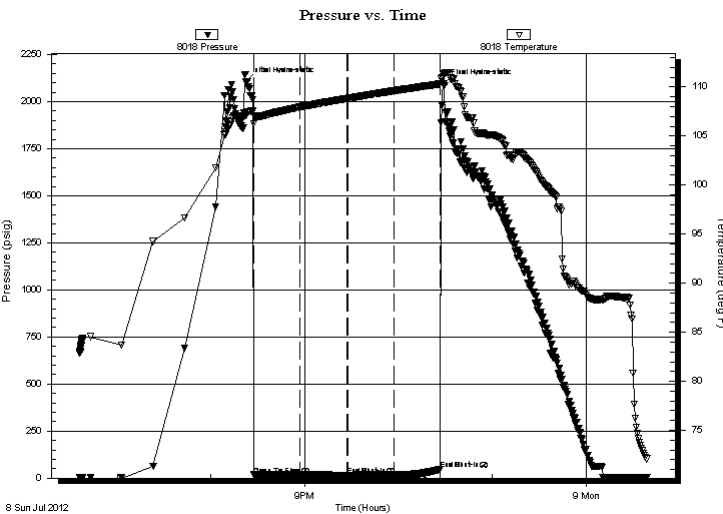
Time Off Btm: 2012.07.08 @ 22:29:00

**TEST COMMENT:** Weak blow died @ 1 min.

No return.

No blow, flushed tool, no blow.

No return.



## PRESSURE SUMMARY

Time (Min.)	Pressure (psig)	Temp (deg F)	Annotation
0	2105.94	107.12	Initial Hydro-static
5	16.90	106.28	Open To Flow (1)
35	16.99	107.95	Shut-In(1)
65	16.81	108.82	End Shut-In(1)
65	14.58	108.83	Open To Flow (2)
95	17.54	109.60	Shut-In(2)
124	47.37	110.31	End Shut-In(2)
127	2094.26	111.31	Final Hydro-static

## Recovery

Length (ft)	Description	Volume (bbl)
5.00	OSM 100m	0.02

## Gas Rates

	Choke (inches)	Pressure (psig)	Gas Rate (Mcf/d)

\* Recovery from multiple tests



**TRILOBITE  
TESTING, INC.**

# DRILL STEM TEST REPORT

**FLUID SUMMARY**

Shakespear Oil Co.

**S22-15-33 Logan, KS**

202 W. Main St.  
Salem, IL 62881

**Zanobia #1-22**

Job Ticket: 48929

**DST#: 4**

ATTN: Tim Priest

Test Start: 2012.07.08 @ 18:36:00

## Mud and Cushion Information

Mud Type: Gel Chem

Cushion Type:

Oil API:

deg API

Mud Weight: 9.00 lb/gal

Cushion Length:

ft

Water Salinity:

ppm

Viscosity: 65.00 sec/qt

Cushion Volume:

bbbl

Water Loss: 11.99 in<sup>3</sup>

Gas Cushion Type:

Resistivity: ohm.m

Gas Cushion Pressure:

psig

Salinity: 18000.00 ppm

Filter Cake: 3.00 inches

## Recovery Information

Recovery Table

Length ft	Description	Volume bbl
5.00	OSM 100m	0.025

Total Length: 5.00 ft      Total Volume: 0.025 bbl

Num Fluid Samples: 0

Num Gas Bombs: 0

Serial #:

Laboratory Name:

Laboratory Location:

Recovery Comments:

