



**TRILOBITE TESTING, INC.**

# DRILL STEM TEST REPORT

Shakespear Oil Co.

**S22-15-33 Logan, KS**

202 W. Main St.  
Salem, IL 62881

**Zanobia #1-22**

Job Ticket: 48932

**DST#: 7**

ATTN: Tim Priest

Test Start: 2012.07.12 @ 07:35:00

## GENERAL INFORMATION:

Formation: **Johnson**

Deviated: No Whipstock: ft (KB)

Time Tool Opened: 09:26:20

Time Test Ended: 13:14:00

Test Type: Conventional Bottom Hole (Reset)

Tester: Chuck Smith

Unit No: 62

**Interval: 4370.00 ft (KB) To 4438.00 ft (KB) (TVD)**

Reference Elevations: 2813.00 ft (KB)

Total Depth: 4438.00 ft (KB) (TVD)

2803.00 ft (CF)

Hole Diameter: 7.88 inches Hole Condition: Good

KB to GR/CF: 10.00 ft

**Serial #: 8018**

**Inside**

Press @ RunDepth: 21.40 psig @ 4372.00 ft (KB)

Capacity: 8000.00 psig

Start Date: 2012.07.12

End Date:

2012.07.12

Last Calib.:

2012.07.12

Start Time: 07:35:02

End Time:

13:14:00

Time On Btm:

2012.07.12 @ 09:24:40

Time Off Btm:

2012.07.12 @ 11:28:00

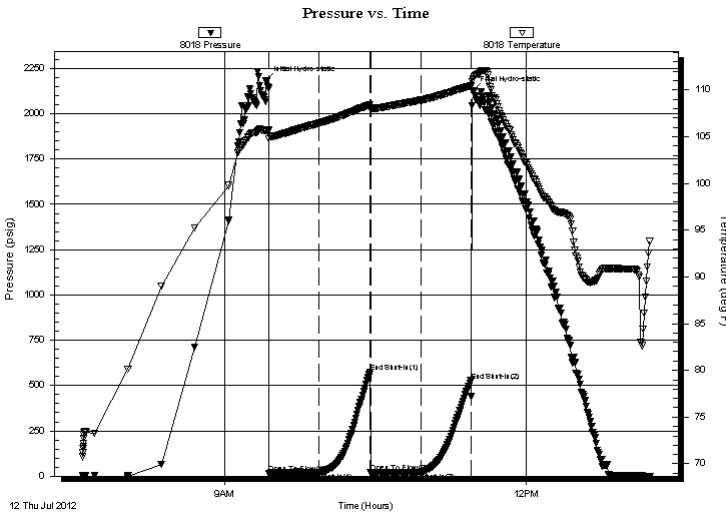
**TEST COMMENT:** Weak blow died @ 10 min.

No return.

No blow.

No return.

## PRESSURE SUMMARY



Time (Min.)	Pressure (psig)	Temp (deg F)	Annotation
0	2184.59	105.67	Initial Hydro-static
2	17.28	104.77	Open To Flow (1)
32	18.96	106.43	Shut-In(1)
62	573.88	108.39	End Shut-In(1)
63	18.98	107.94	Open To Flow (2)
93	21.40	108.89	Shut-In(2)
122	526.31	110.41	End Shut-In(2)
124	2129.06	111.07	Final Hydro-static

## Recovery

Length (ft)	Description	Volume (bbl)
10.00	OSM 100m	0.05

\* Recovery from multiple tests

## Gas Rates

Choke (inches)	Pressure (psig)	Gas Rate (Mcf/d)



**TRILOBITE  
TESTING, INC.**

**DRILL STEM TEST REPORT**

**FLUID SUMMARY**

Shakespear Oil Co.

**S22-15-33 Logan, KS**

202 W. Main St.  
Salem, IL 62881

**Zanobia #1-22**

Job Ticket: 48932

**DST#: 7**

ATTN: Tim Priest

Test Start: 2012.07.12 @ 07:35:00

**Mud and Cushion Information**

Mud Type: Gel Chem

Cushion Type:

Oil API:

deg API

Mud Weight: 9.00 lb/gal

Cushion Length:

ft

Water Salinity:

ppm

Viscosity: 51.00 sec/qt

Cushion Volume:

bbbl

Water Loss: 10.39 in<sup>3</sup>

Gas Cushion Type:

Resistivity: 9000.00 ohm.m

Gas Cushion Pressure:

psig

Salinity: ppm

Filter Cake: 1.00 inches

**Recovery Information**

Recovery Table

Length ft	Description	Volume bbl
10.00	OSM 100m	0.049

Total Length: 10.00 ft      Total Volume: 0.049 bbl

Num Fluid Samples: 0

Num Gas Bombs: 0

Serial #:

Laboratory Name:

Laboratory Location:

Recovery Comments:

### Pressure vs. Time

