

OPERATOR

Company: R&B Oil and Gas
Address: 124 N. Main
Attica, KS 67009

PLOTTED GEOLOGICAL LOG

WellSight Systems

Scale 1:240 (5"=100') Imperial

Well Name: TRAFFAS "B" #9
Location: Sec. 32-T32S-R10W
Licence Number: 15-007-23846-00-00
Spud Date: 03/06/2012
Surface Coordinates: SW SW
Region: Barber Co., KS
Drilling Completed: 03/12/2012

Bottom Hole Coordinates: Vertical

Ground Elevation (ft): 1539 K.B. Elevation (ft): 1549
Logged Interval (ft): 3500 To: 5000 Total Depth (ft): 5000
Formation: Simpson
Type of Drilling Fluid: Chemical Mud by Mud-Co

Printed by MUD.LOG from WellSight Systems 1-800-447-1534 www.WellSight.com

GEOLOGIST

Name: Kent Roberts
Company: Roberts Resources, Inc.
Address: 2020 N. Tyler, Suite 106
Wichita, KS 67212
Phone 316-721-2817

INFORMATION

DRILLING CONTRACTOR: Hardt Drilling LLC
MUD TYPE: Chemical by Mud-Co (Brad Bortz, Engineer)
DRILLING TIME KEPT FROM: 3500' to RTD
SAMPLES SAVED FROM: 3500' to RTD
SAMPLES EXAMINED FROM: 3500' to RTD
GEOLOGICAL SUPERVISION FROM: 3582' to RTD
ELECTRICAL SURVEYS: CNL-CDL / DIL by Log-Tech

DAILY ACTIVITY @ 0700 HRS

03/05/12 MIRU
03/06/12 Spud well. Ran surface and cement
03/07/12 Drilling @ 911'
03/08/12 Drilling @ 1955'
03/09/12 Drilling @ 2937'
03/10/12 Drilling @ 3905'
03/11/12 Drilling @ 4648'
03/12/12 Drilling @ 4850'

CASING DATA

CONDUCTOR CASING: None

SURFACE CASING: Ran 6 jts 8-5/8 set @ 268' w/ 225 sacks

PRODUCTION : 5-1/2 x 14# set @ 4990' w/ 175 sacks Class H

COMMENTS

Deviation 1-1/2 degree, pipe strap 1.53' short to board @ 4832'

Production casing was set for further testing.

Recommended perforations for acid and frac stimulation are:

Cherokee Sd 4511' to 4516'

Mississippi 4540' to 4546'

Mississippi 4558' to 4574'

Mississippi 4578' to 4610'

Respectfully Submitted,

Kent Roberts
Ks License #322

FORMATION TOPS

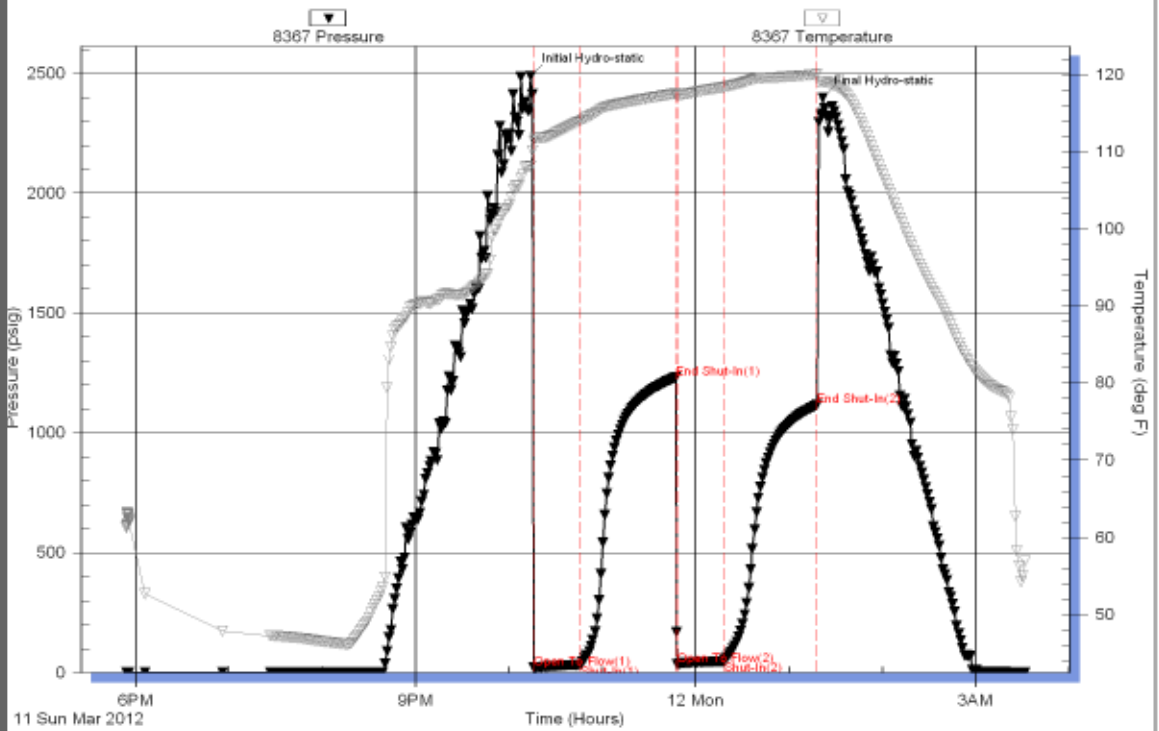
WELL NAME: Traffas "B" #9

ELEV. G.L.= 1539

K.B.= 1549



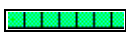








FORMATION TOPS	Sample		E- Log		KEY WELLS	
					Traffas "B" 5	Vickery "B" 1
Heebner	3599	-2050	3600	-2051	-2057	-2052
Lansing	3795	-2246	3790	-2241	-2257	-2252
Stark Shale	4256	-2707	4258	-2709	-2717	-2716
Cherokee Sh.	4488	-2939	4487	-2938	-2945	-2949
Cherokee Sand	4504	-2955	4510	-2961	NP	-2976
Mississippi Chert	4532	-2983	4540	-2991	-2982	-3015
Kinderhook Shale	4726	-3177	4728	-3179	-3189	NDE
Viola	4818	-3269	4819	-3270	-3295	NDE
Simpson Sd	4914	-3365	4920	-3371	NDE	NDE
Total Depth	5000	-3451	5001	-3452	NDE	NDE

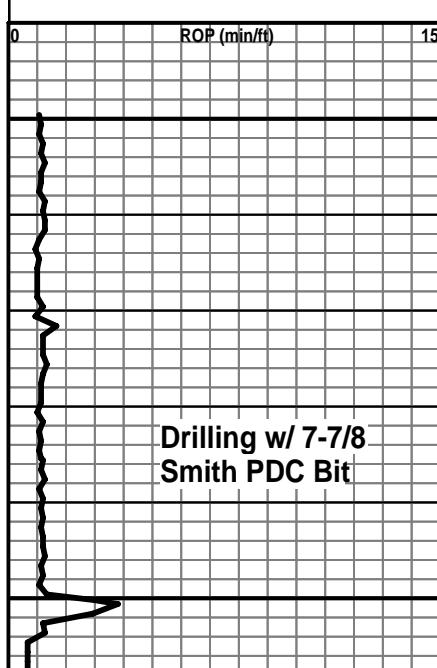
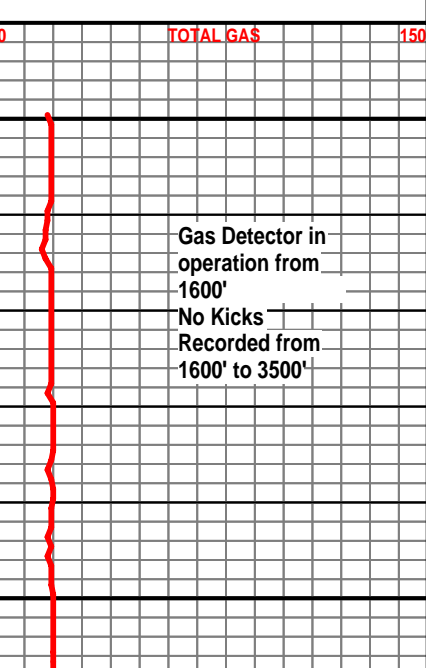
Pressure vs. Time

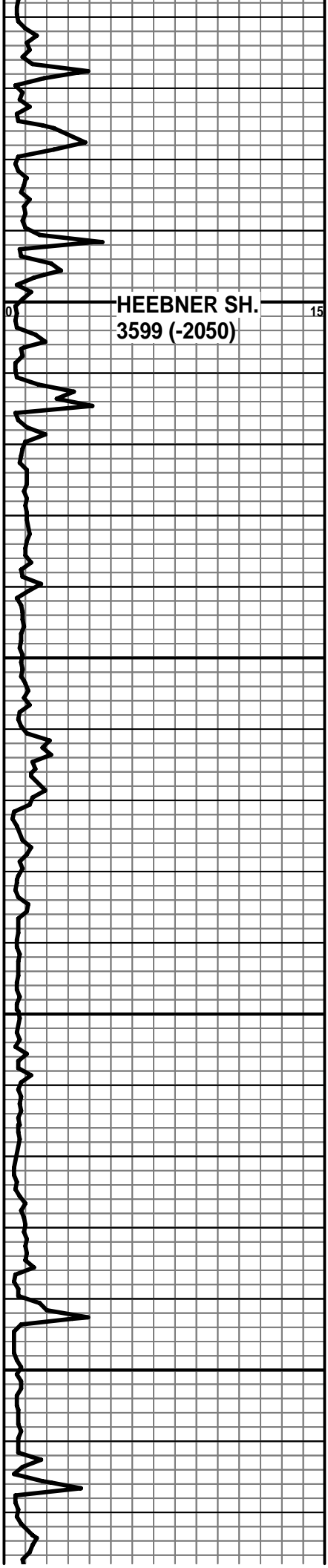


DST #1 from 4822-4832
 30-60-30-60
 IF: Weak built to 2 inches
 ISI: No blow
 FF: Weak built to 2 inches
 FSI: No blow
 REC: 60' water cud mud
 Chlorides 90,000
 HP: 2488-2396
 FP: 22-34 / 35-53
 SIP: 1230-1115

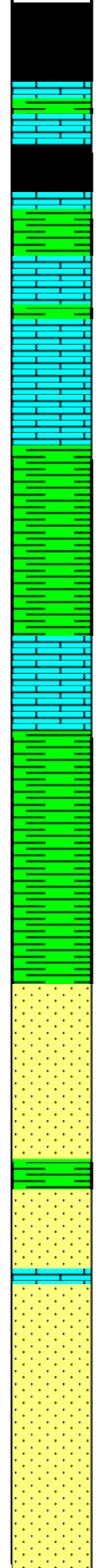
ROCK TYPES

-  Anhy
-  Congl
-  Salt
-  Siltstone
-  Cht
-  Dolomite
-  Shale
-  Sandstone
-  Black shale
-  Limestone
-  Cherty dol.

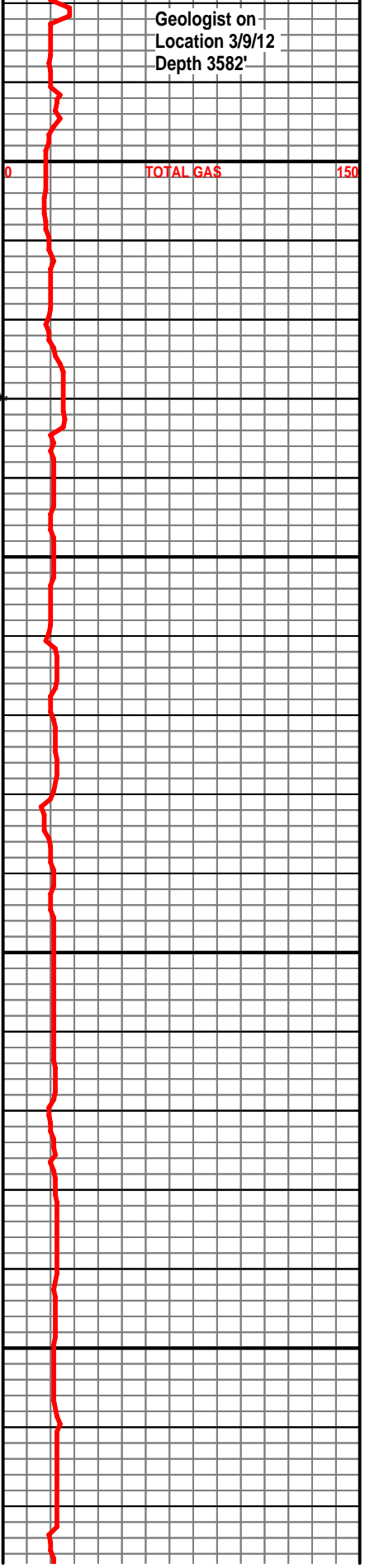
Curve Track 1 ROP (min/ft)	Depth	Lithology	Geological Descriptions	TOTAL GAS, C1-C5 TOTAL GAS (Units)
<p>ROP (min/ft)</p>  <p>Drilling w/ 7-7/8 Smith PDC Bit</p>	<p>3500</p> <p>3550</p>			<p>TOTAL GAS</p>  <p>Gas Detector in operation from 1600' No Kicks Recorded from 1600' to 3500'</p>

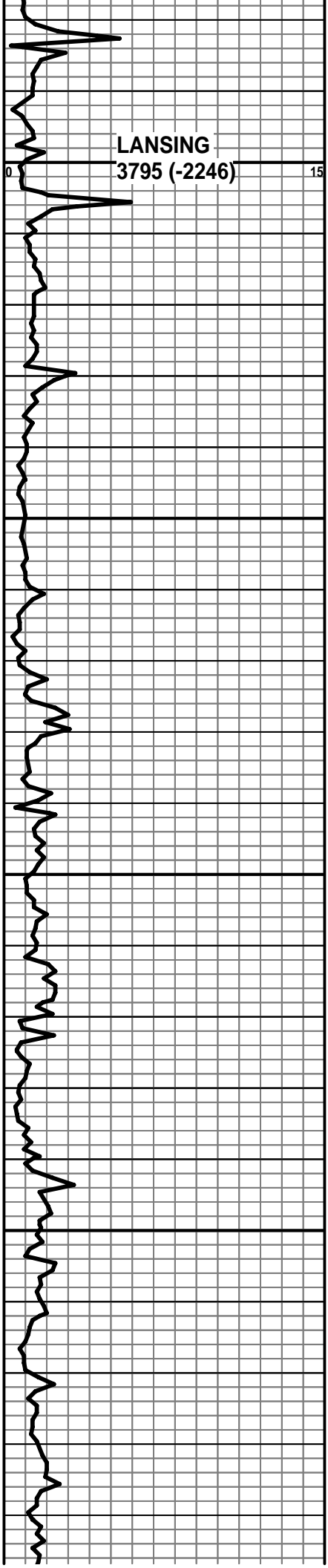


3600
3650
3700
3750



Sh - blk, carb
Ls - tan, brn, dense
Sh - gry, blk
Ls - crm, lt gry, f-m xln, fos, good foss & vuggy porosity, no show
Sh - gry, blk
Sh - gry, blk, silty
Ls - tan, brn, f xln, dense
Sh - gry, silty, w/ Sd - gry, wht, fine grn, well sorted, mica
Sh - gry, silty
Sh - gry, silty
Sd - gry, wht, fine grn, mica i/p, friable
Sd - clr, wht, gry, well sorted, mica, i/p
Sd - clr, wht, gry, well sorted, mica, i/p





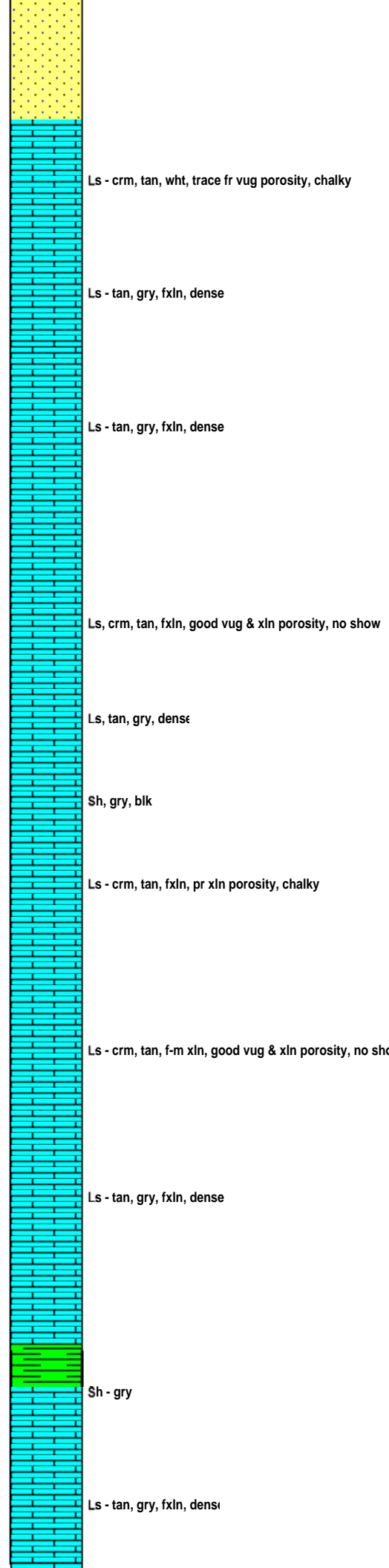
LANSING
3795 (-2246)

3800

3850

3900

3950



Ls - crm, tan, wht, trace fr vug porosity, chalky

Ls - tan, gry, fxln, dense

Ls - tan, gry, fxln, dense

Ls, crm, tan, fxln, good vug & xln porosity, no show

Ls, tan, gry, dense

Sh, gry, blk

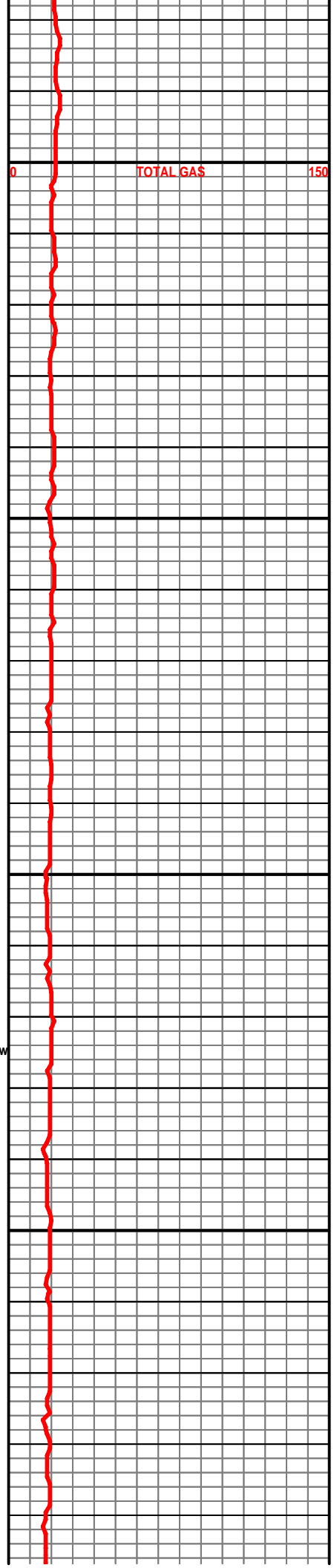
Ls - crm, tan, fxln, pr xln porosity, chalky

Ls - crm, tan, f-m xln, good vug & xln porosity, no show

Ls - tan, gry, fxln, dense

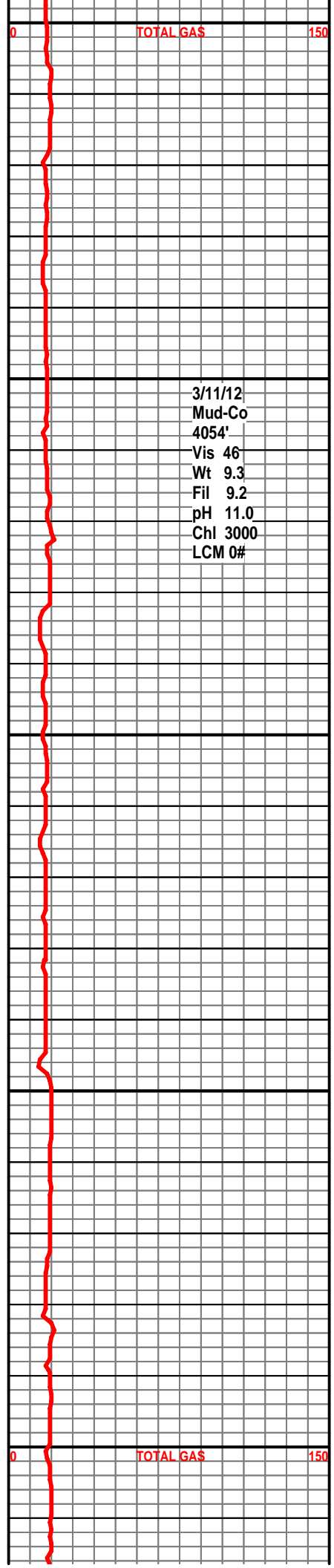
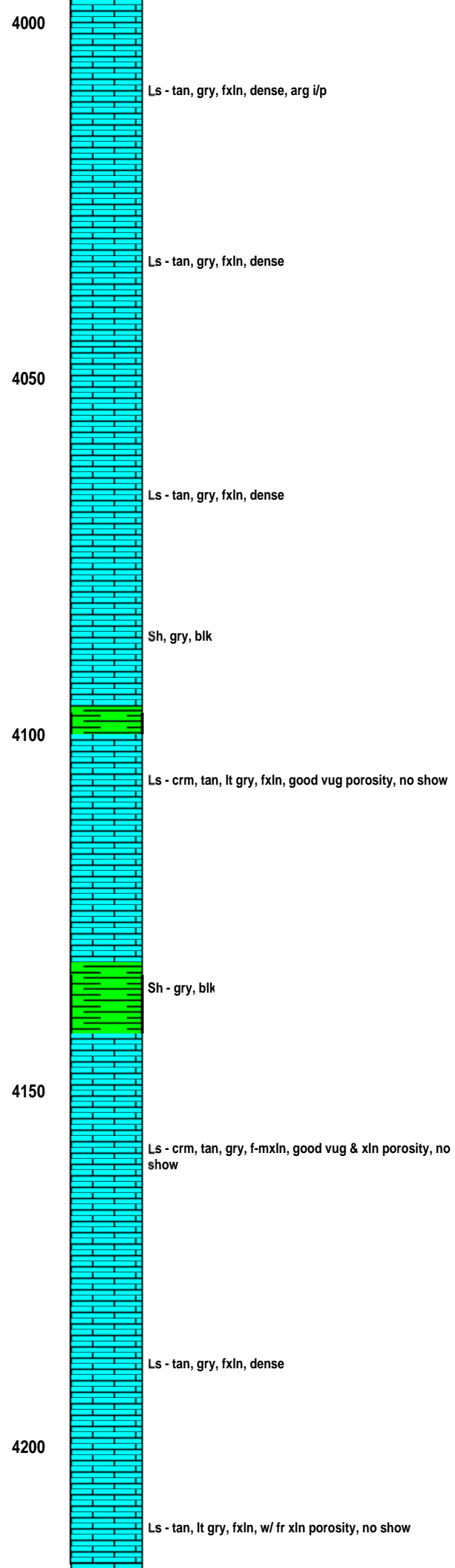
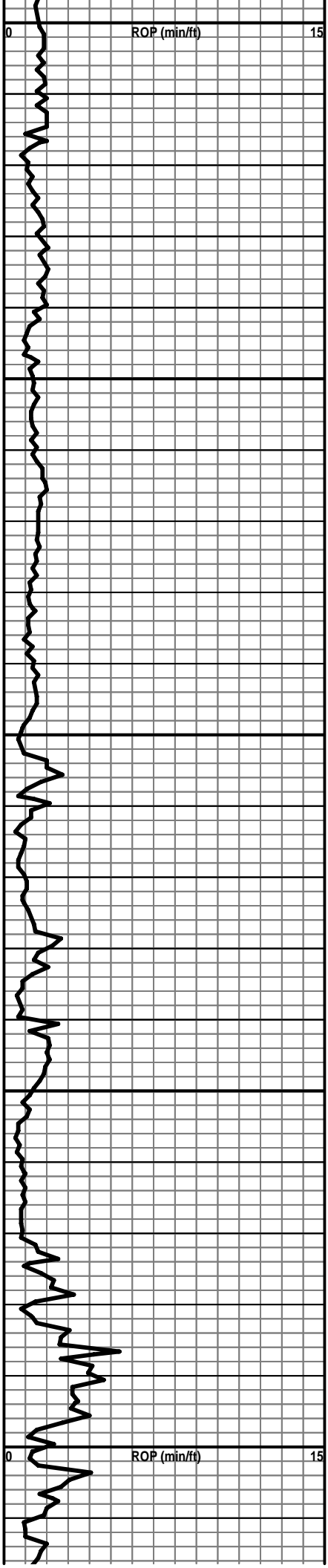
Sh - gry

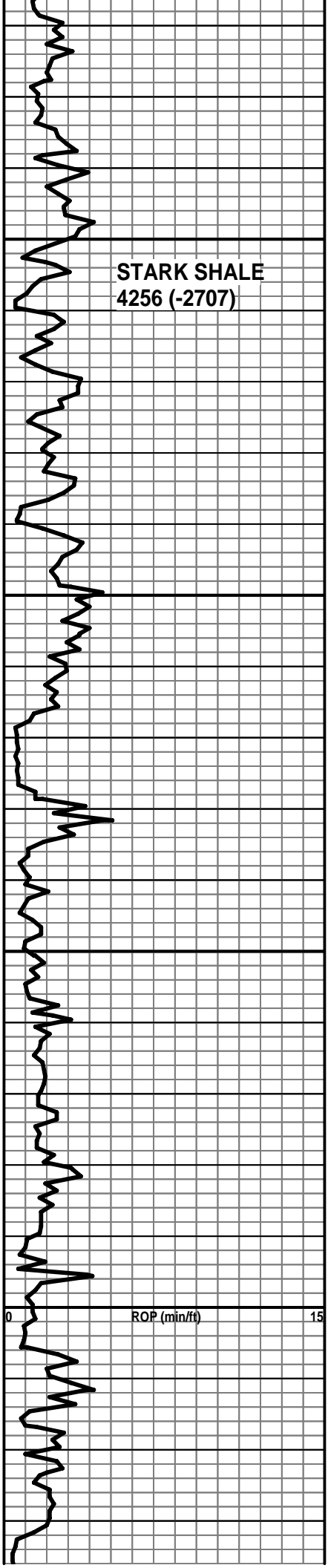
Ls - tan, gry, fxln, densi



TOTAL GAS

150





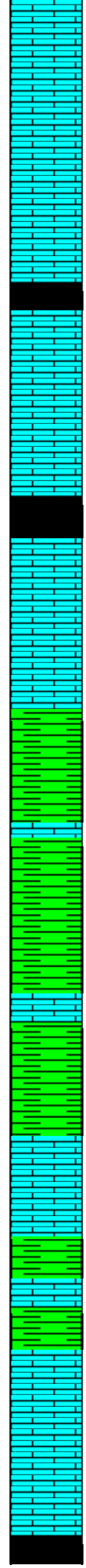
STARK SHALE
4256 (-2707)

4250

4300

4350

4400



Ls - tan, lt gry, fxln, w/ fr xln porosity, chalky no show

Sh - blk carb

Ls - tan, lt gry, f-m xln, trace pr-fr vug porosity, scat spotty bright fluor, no stain, no show, no odor

Sh - blk carb

Ls - tan, gry, fxln, pr xln porosity, chalky, scat lt brn spotty stain, spotty bright fluor, trace show gas bubble and oily film when crushed, fair odor.

Ls, tan, gry, brn, fxln, dense

Sh - gry, blk

Sh - gry, blk

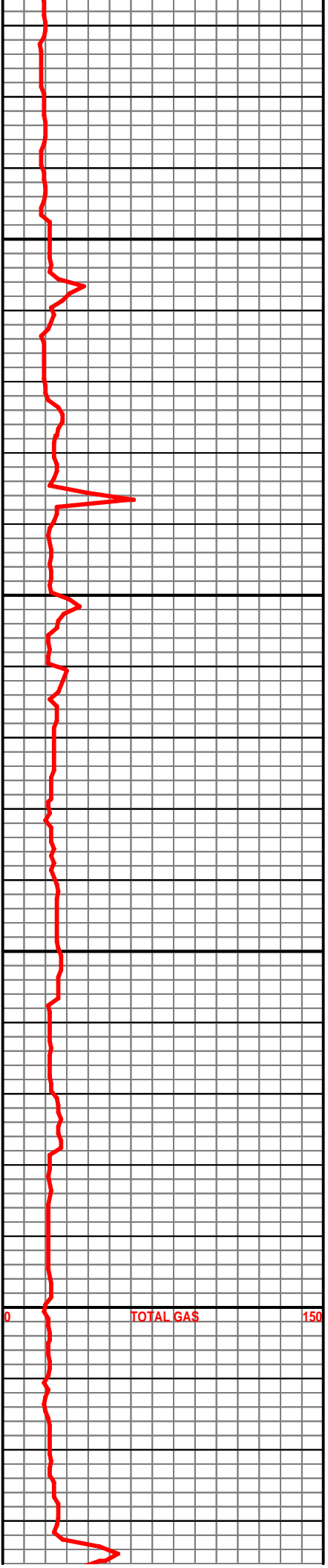
Sh - grn, gry, trace blk. Ls - crm, tan dense

Ls - crm, buff, vfxln, dense

Sh, gry, blk

Ls - tan, brn, gry, fxln, dense

Sh - Blak Carb



PAWNEE
4438 (-2889)

4450

Ls - crm, tan, gry, wht, fxln, dense

Ls - crm, tan, gry, wht, fxln, dense

Sh - Blak Carb

Ls - tan, gry, fxln, dense

CHEROKEE SH.
4488 (-2939)

Sh - Blak Carb

4500

CHEROKEE SD
4504 (-2955)

Sd - wht, lt gry, vf grain, well sorted, very friable, completely oil saturated, gd show light oil, trace - poor show lifeless gas bubbles, strong odor, bright fluor.

Sh - gry, grn, trace trans chert. Still abun Sd from above, bleeding fair to good show brn free oil, bright fluor, strong odor

MISSISSIPPI
4532 (-2983)

4550

Cht, pale green, Dolomitic? Wht, blocky, poorly weathered w/ patchy gils stain, trans, tripolitic i/p, even light brn stain, pr-fr show light brn free oil, trace gas. No fluor, fair odor

Cht, wht, weathered, tripolitic i/p, trace fair vuggy porosity, gd pin-point porosity, pr show gas bubbles, fr -gd show brn free oil, dull to spotty bright fluor, strong odor
(Oil Film on top of Sample Cup)

CFB

Cht, as above. Mostly, Ls, Chty Ls, Dolomitic Ls, green, very glauconitic

4600

Cht, wht, trc foss, mostly devitrified, tripolitic, fr porosity, even brn saturated stain, fr show free oil, fr-gd show gas, brt ylw fluor, good odor

Cht, lt-gry, gry, mott, foss, spicular i/p, most is frac, trace weathered w/ black heavy stn, trace show free oil and gas, dull fluor, faint odor

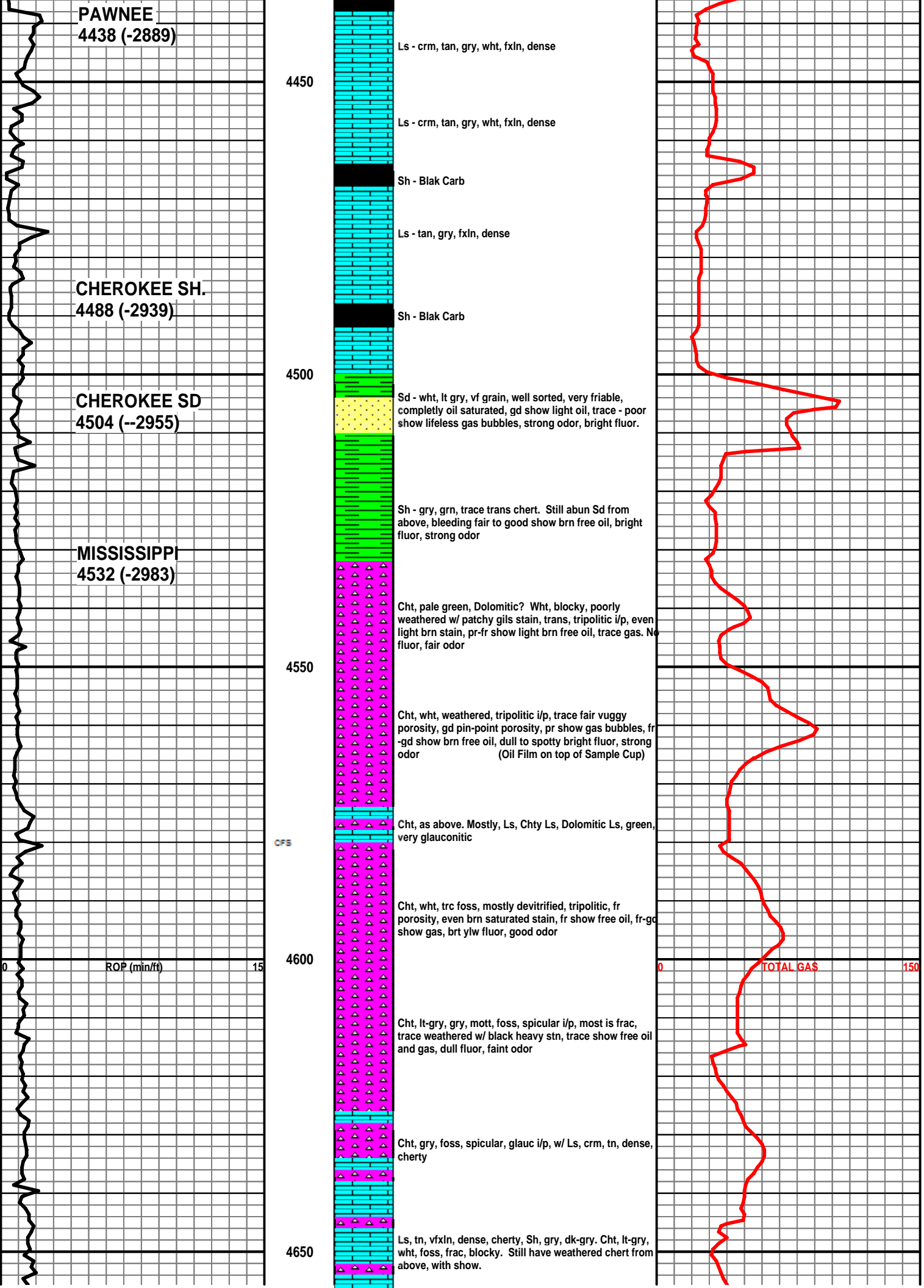
Cht, gry, foss, spicular, glauc i/p, w/ Ls, crm, tn, dense, cherty

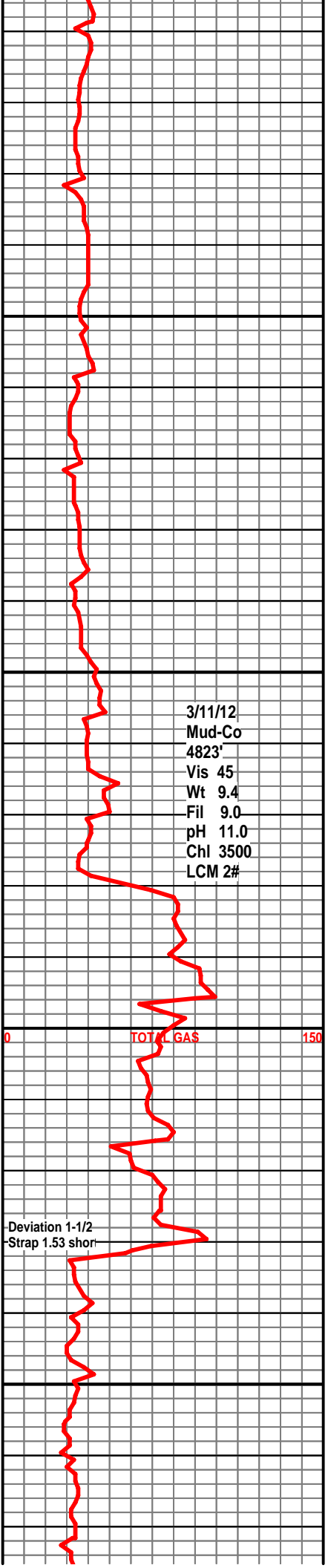
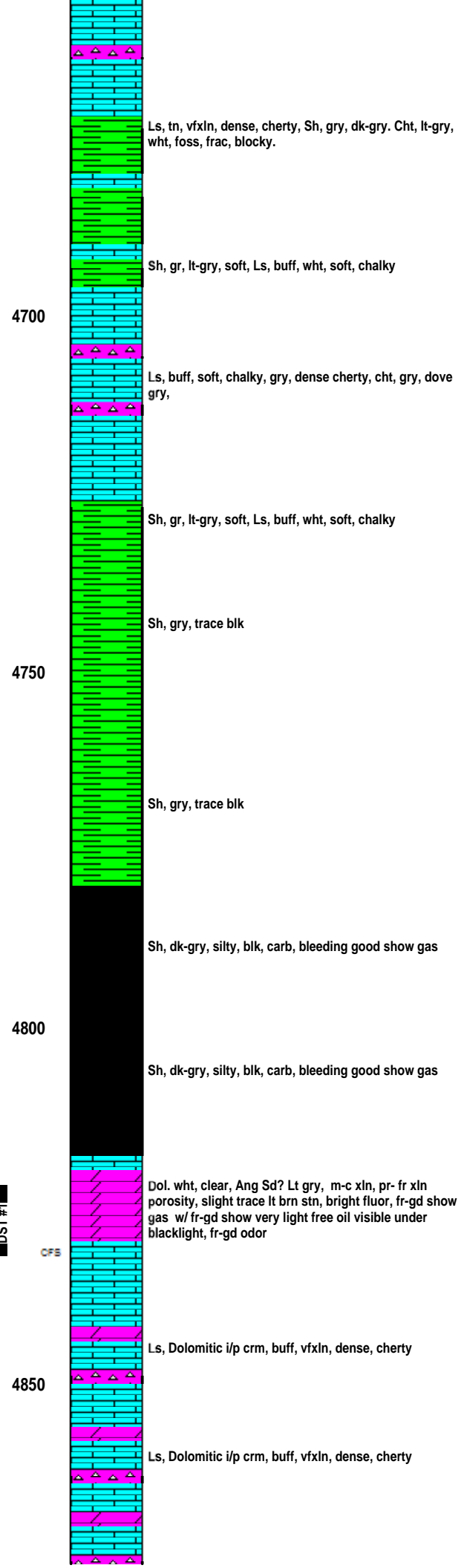
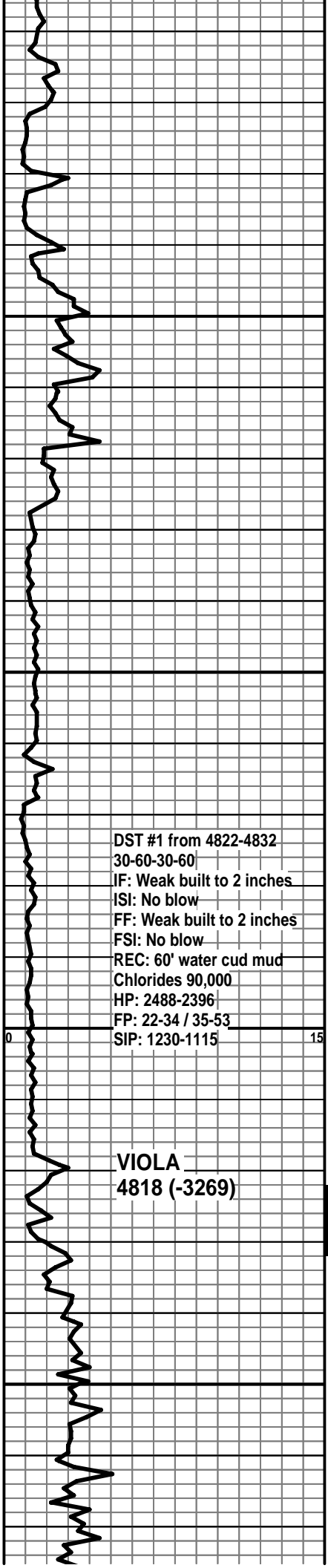
4650

Ls, tn, vfxln, dense, cherty, Sh, gry, dk-gry. Cht, lt-gry, wht, foss, frac, blocky. Still have weathered chert from above, with show.

ROP (min/ft) 0 15

TOTAL GAS 0 150





DST #1 from 4822-4832
 30-60-30-60
 IF: Weak built to 2 inches
 ISI: No blow
 FF: Weak built to 2 inches
 FSI: No blow
 REC: 60' water cud mud
 Chlorides 90,000
 HP: 2488-2396
 FP: 22-34 / 35-53
 SIP: 1230-1115

VIOLA
4818 (-3269)

DST #1

3/11/12
 Mud-Co
 4823'
 Vis 45
 Wt 9.4
 Fil 9.0
 pH 11.0
 Chl 3500
 LCM 2#

TOTAL GAS

Deviation 1-1/2
 Strap 1.53 short

