

Timothy G. Pierce

Petroleum Geologist

GEOLOGIST'S REPORT DRILLING TIME AND SAMPLE LOG

COMPANY R & B Oil and Gas, Inc.
 LEASE Bock 'B' #1
 FIELD Wildcat
 LOCATION NE SW
 SEC 34 TWSP 26S RGE 9W
 COUNTY Reno STATE Kansas
 CONTRACTOR Hardt Drilling Rig #1
 SPUD 4-04-2012 COMP 4-10-2012
 RTD 4213 LTD 4214
 MUD UP 2900 TYPE MUD Chemical
 SAMPLES SAVED FROM 3300 TO RTD
 DRILLING TIME KEPT FROM 2000 TO RTD
 SAMPLES EXAMINED FROM 2280 TO RTD
 GEOLOGICAL SUPERVISION FROM 2248 TO RTD
 GEOLOGIST ON WELL Tim Pierce

ELEVATIONS

KB 1707'
 DF _____
 GL 1697'
 Measurements Are All
 From Kelly Bushing

CASING

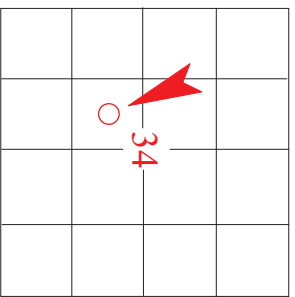
CONDUCTOR _____
 SURFACE 8-5/8" at 255'
 PRODUCTION None

ELECTRICAL SURVEYS

DIL / CN-CD
Log-Tech

FORMATION TOPS

FORMATION TOPS	ELECTRIC LOG	SAMPLE
<u>Onaga Sh.</u>	<u>2262 (-555)</u>	<u>2257 (-550)</u>
<u>Wabunsee</u>	<u>2307 (-600)</u>	<u>2303 (-596)</u>
<u>Heebner Sh.</u>	<u>3230 (-1523)</u>	<u>3226 (-1519)</u>
<u>Lansing</u>	<u>3417 (-1710)</u>	<u>3413 (-1706)</u>
<u>Stark Sh.</u>	<u>3702 (-1995)</u>	<u>3699 (-1992)</u>
<u>Cherokee Sh.</u>	<u>3920 (-2213)</u>	<u>3916 (-2209)</u>
<u>Mississippi</u>	<u>3950 (-2243)</u>	<u>3941 (-2234)</u>
<u>Viola</u>	<u>NA</u>	<u>4207 (-2500)</u>


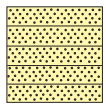
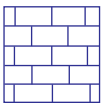
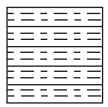

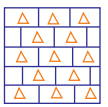

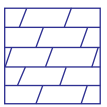


API # 15-155-21,586

REMARKS DST's covering the Mississippi and Viola were run with negative results.
Electric logs indicate a possible gas zone in the Indian Cave SS at 2275'-2280', no sample show was observed and the gas detector was not operational at the time the zone was drilled.
A slight sample show was noted in the Kansas City 'C' zone which was deemed not worthy of testing, electric logs indicate a tight zone of poor reservoir quality, most likely non-commercial.
No other zones of interest were indicated by samples or electric logs, therefore the Bock 'B' #1 was plugged and abandoned as a dry hole on 4-10-2012

Timothy G. Pierce

LEGEND

							
Anhydrite	Sandstone	Limestone	Shale	Carb Sh	Cherty LS	Chert	Dolomite

DRILLING TIME IN MINUTES PER FOOT <small>Rate of Penetration Decreases</small>	DEPTH	LITHOLOG	GAS SCALE	SAMPLE DESCRIPTION	REMARKS
↓					

5 10 15

10 100 500

2000

50

2100

50

2200

Gas Detector not working

4-04-12 MIRT
Spud @ 12 PM
Set 6 jts (242') of 8-5/8"
X 23# @ 255'
w/ 225 sx 60/40 Poz,
2% gel 3% cc
PD @ 6:30 PM
cement did circ

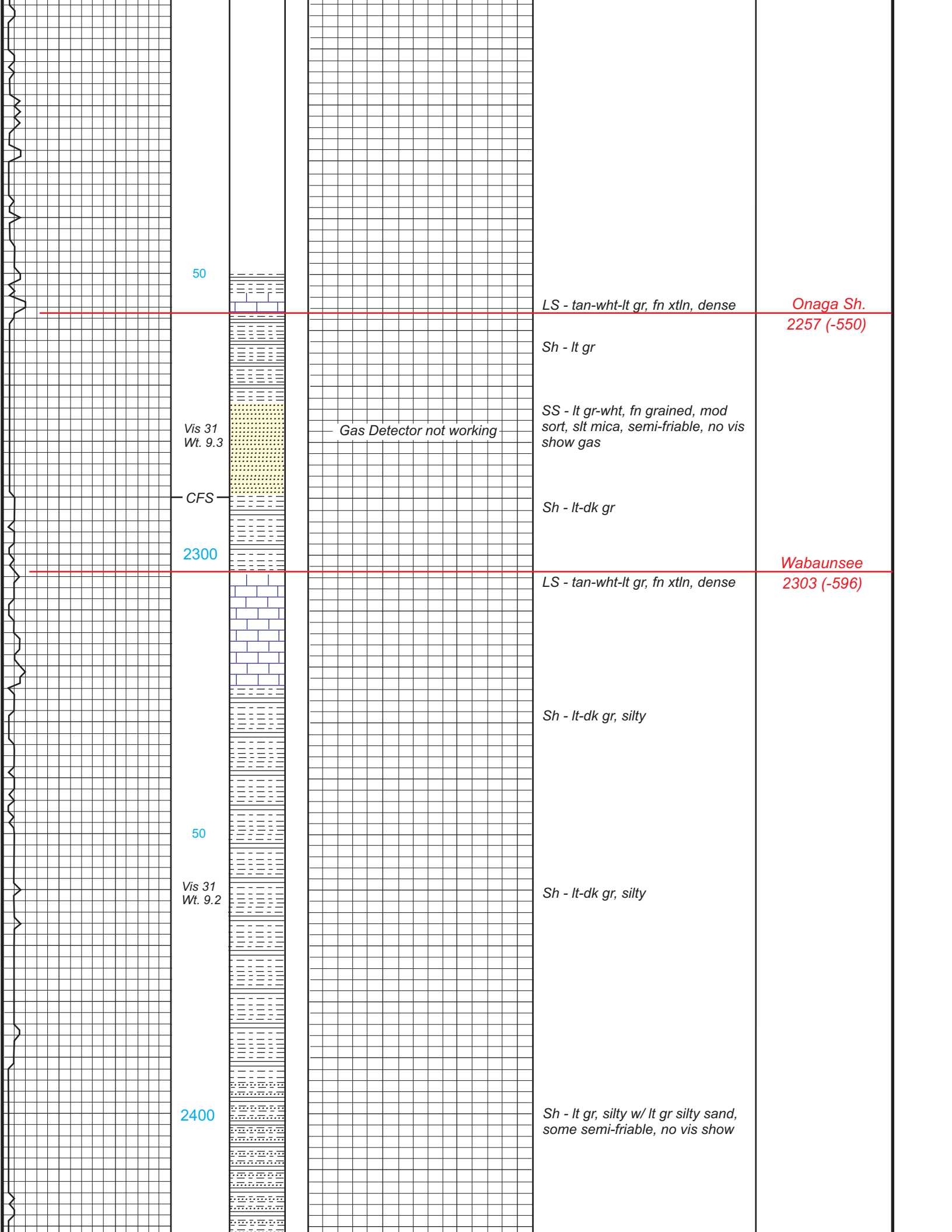
4-05-12 - 7:00 AM
drlg @ 462

4-06-12 7:00 AM
drlg @ 2029'

4-07-12 7:00 AM
drlg @ 2961'

4-08-12 7:00 AM
drlg @ 3724'

4-09-12 7:00 AM
drlg @ 4000'
RTD 4213' @ 12:10 PM



50

LS - tan-wht-lt gr, fn xtl, dense

Onaga Sh.
2257 (-550)

Sh - lt gr

Vis 31
Wt. 9.3

Gas Detector not working

SS - lt gr-wht, fn grained, mod
sort, slt mica, semi-friable, no vis
show gas

CFS

Sh - lt-dk gr

2300

Wabaunsee
2303 (-596)

LS - tan-wht-lt gr, fn xtl, dense

Sh - lt-dk gr, silty

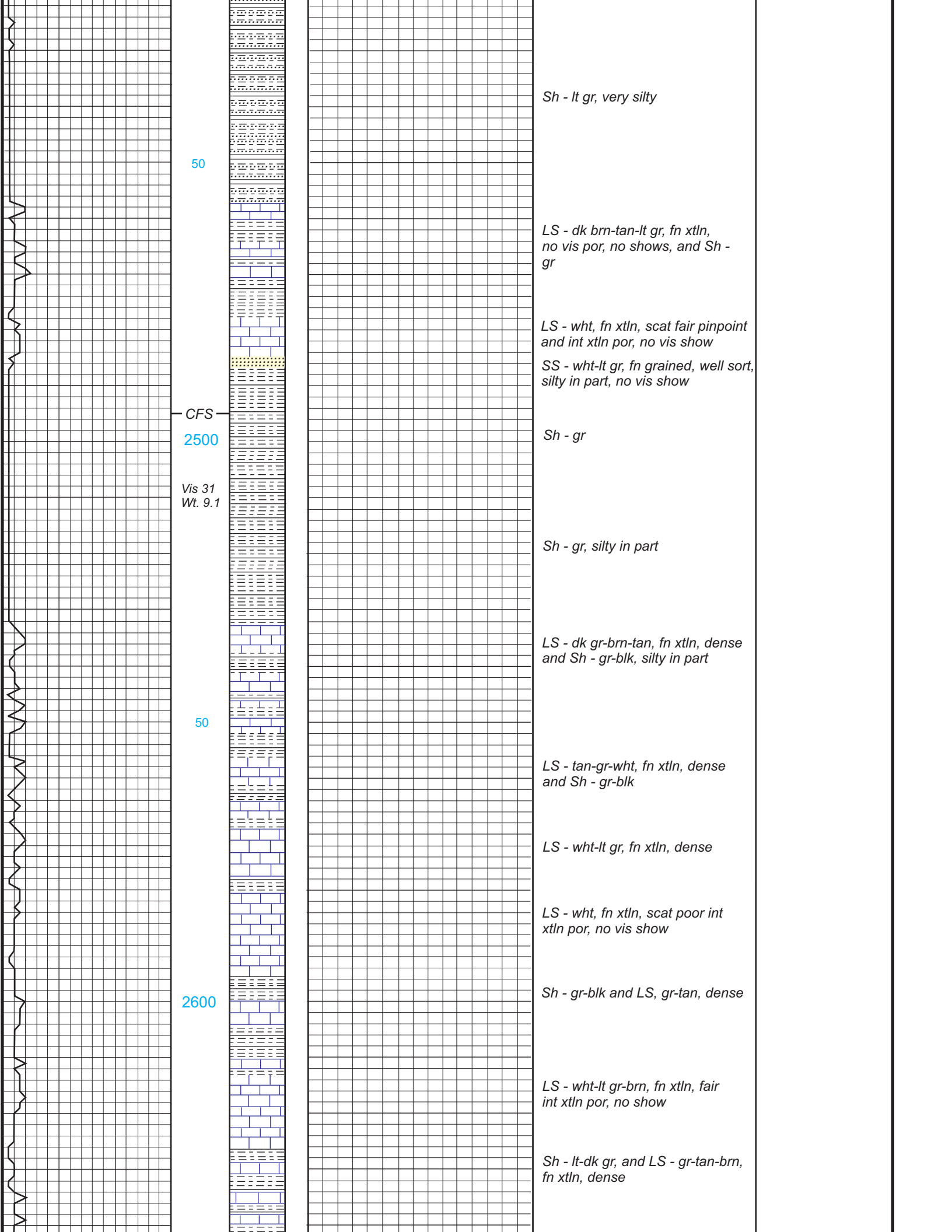
50

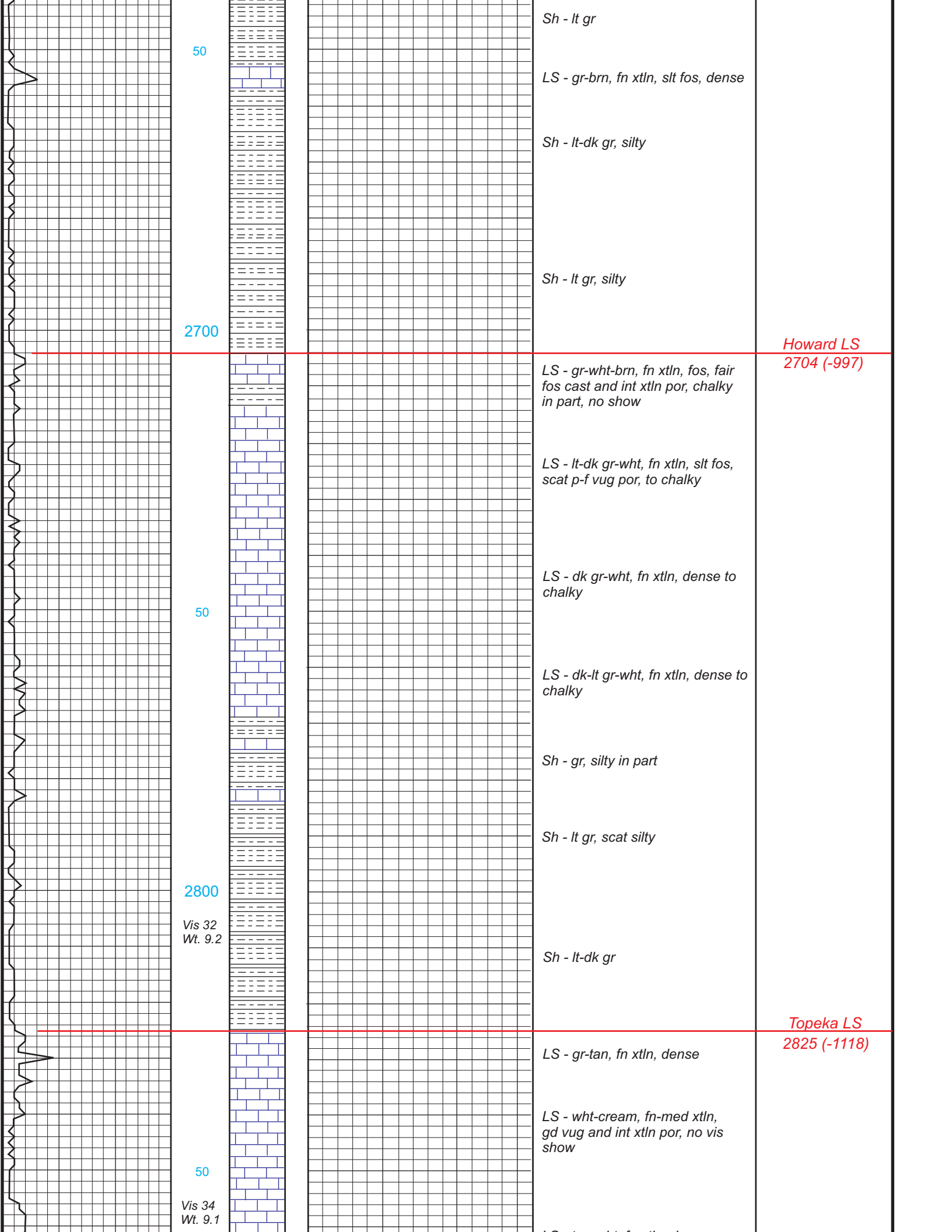
Vis 31
Wt. 9.2

Sh - lt-dk gr, silty

2400

Sh - lt gr, silty w/ lt gr silty sand,
some semi-friable, no vis show





50

Sh - lt gr

LS - gr-brn, fn xtl, slt fos, dense

Sh - lt-dk gr, silty

Sh - lt gr, silty

2700

Howard LS
2704 (-997)

LS - gr-wht-brn, fn xtl, fos, fair
fos cast and int xtl por, chalky
in part, no show

LS - lt-dk gr-wht, fn xtl, slt fos,
scat p-f vug por, to chalky

LS - dk gr-wht, fn xtl, dense to
chalky

50

LS - dk-lt gr-wht, fn xtl, dense to
chalky

Sh - gr, silty in part

Sh - lt gr, scat silty

2800

Vis 32
Wt. 9.2

Sh - lt-dk gr

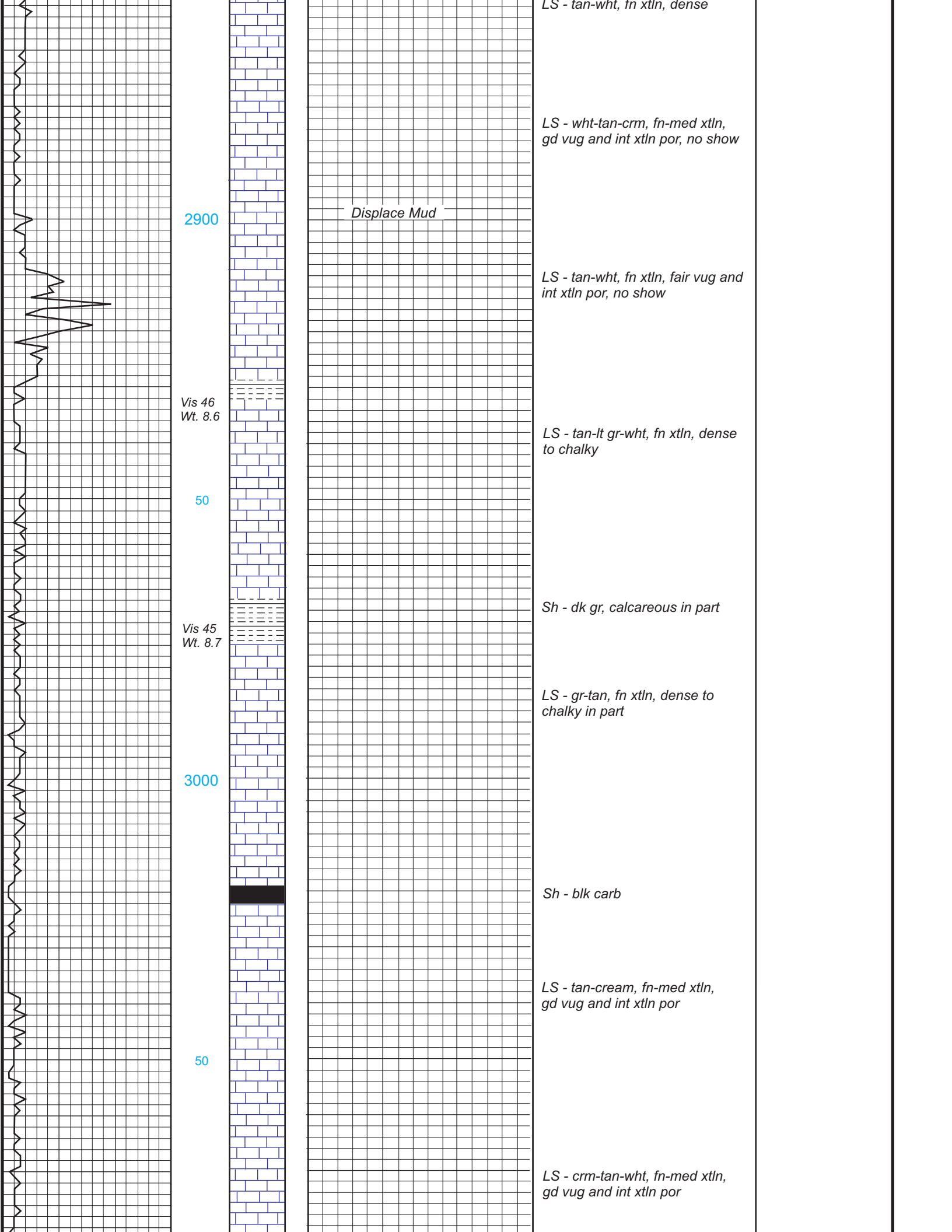
Topeka LS
2825 (-1118)

LS - gr-tan, fn xtl, dense

LS - wht-cream, fn-med xtl,
gd vug and int xtl por, no vis
show

50

Vis 34
Wt. 9.1



2900

Displace Mud

LS - wht-tan-crm, fn-med xtl, gd vug and int xtl por, no show

LS - tan-wht, fn xtl, fair vug and int xtl por, no show

Vis 46
Wt. 8.6

LS - tan-lt gr-wht, fn xtl, dense to chalky

50

Sh - dk gr, calcareous in part

Vis 45
Wt. 8.7

LS - gr-tan, fn xtl, dense to chalky in part

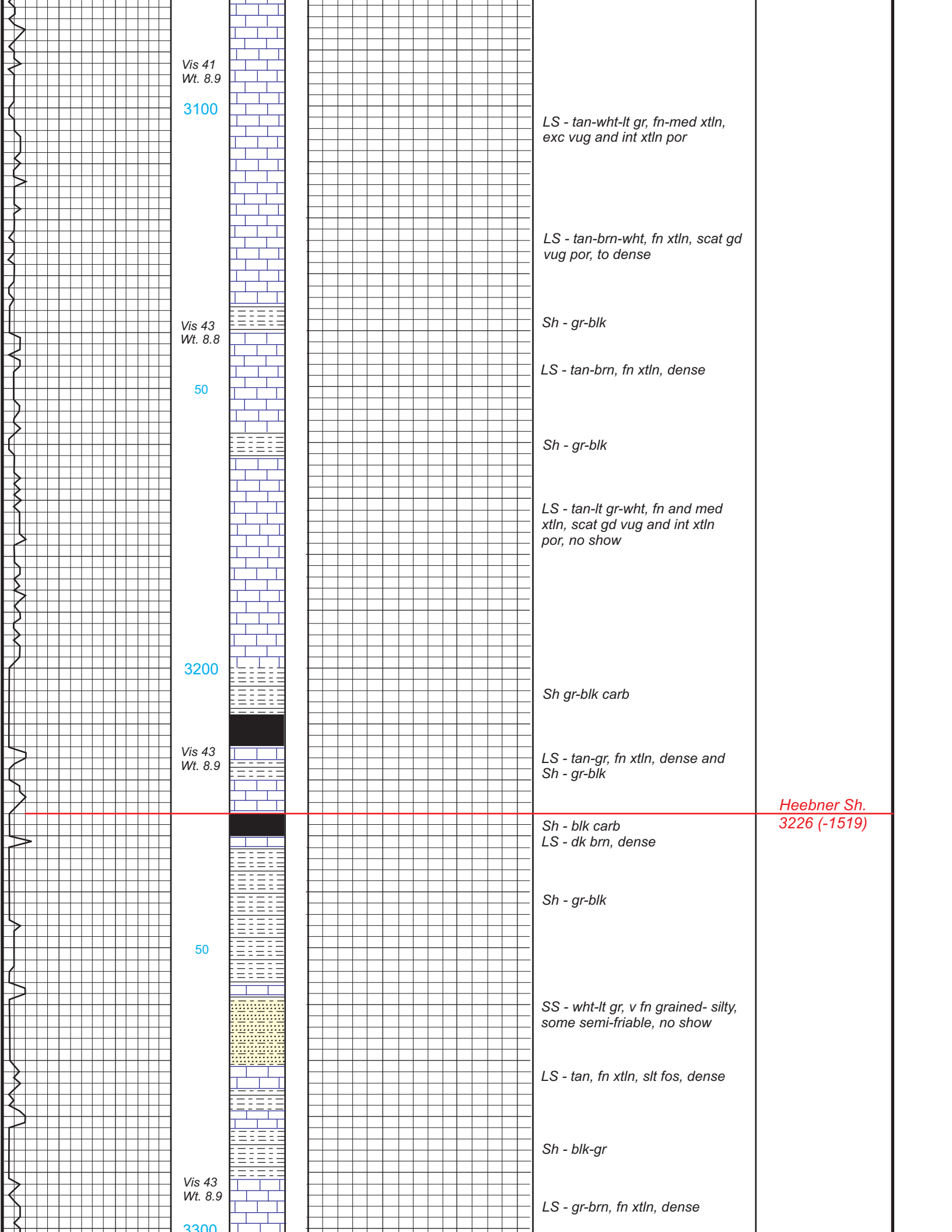
3000

Sh - blk carb

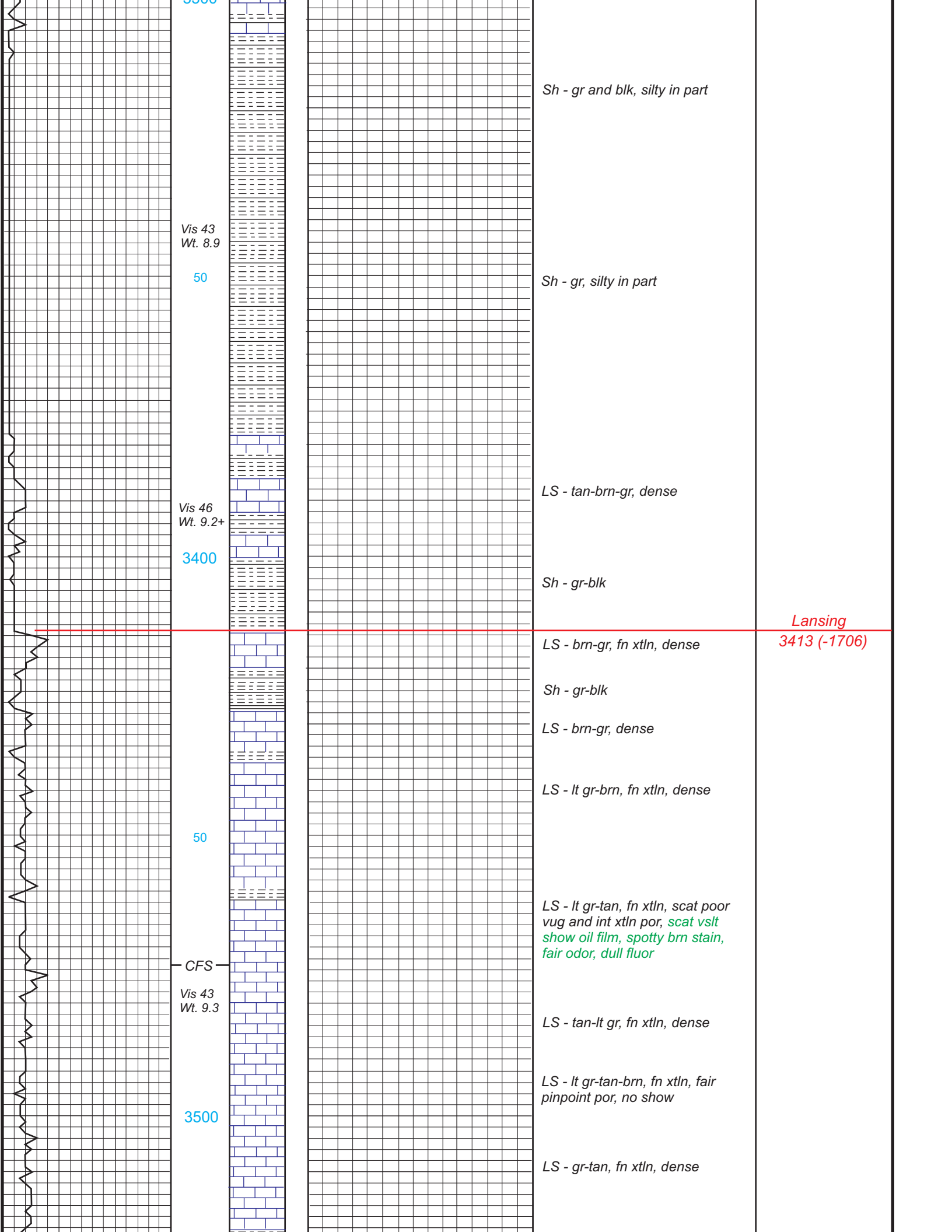
50

LS - tan-cream, fn-med xtl, gd vug and int xtl por

LS - crm-tan-wht, fn-med xtl, gd vug and int xtl por



Heebner Sh.
3226 (-1519)



Vis 43
Wt. 8.9

50

Vis 46
Wt. 9.2+

3400

50

CFS
Vis 43
Wt. 9.3

3500

Sh - gr and blk, silty in part

Sh - gr, silty in part

LS - tan-brn-gr, dense

Sh - gr-blk

LS - brn-gr, fn xtln, dense

Sh - gr-blk

LS - brn-gr, dense

LS - lt gr-brn, fn xtln, dense

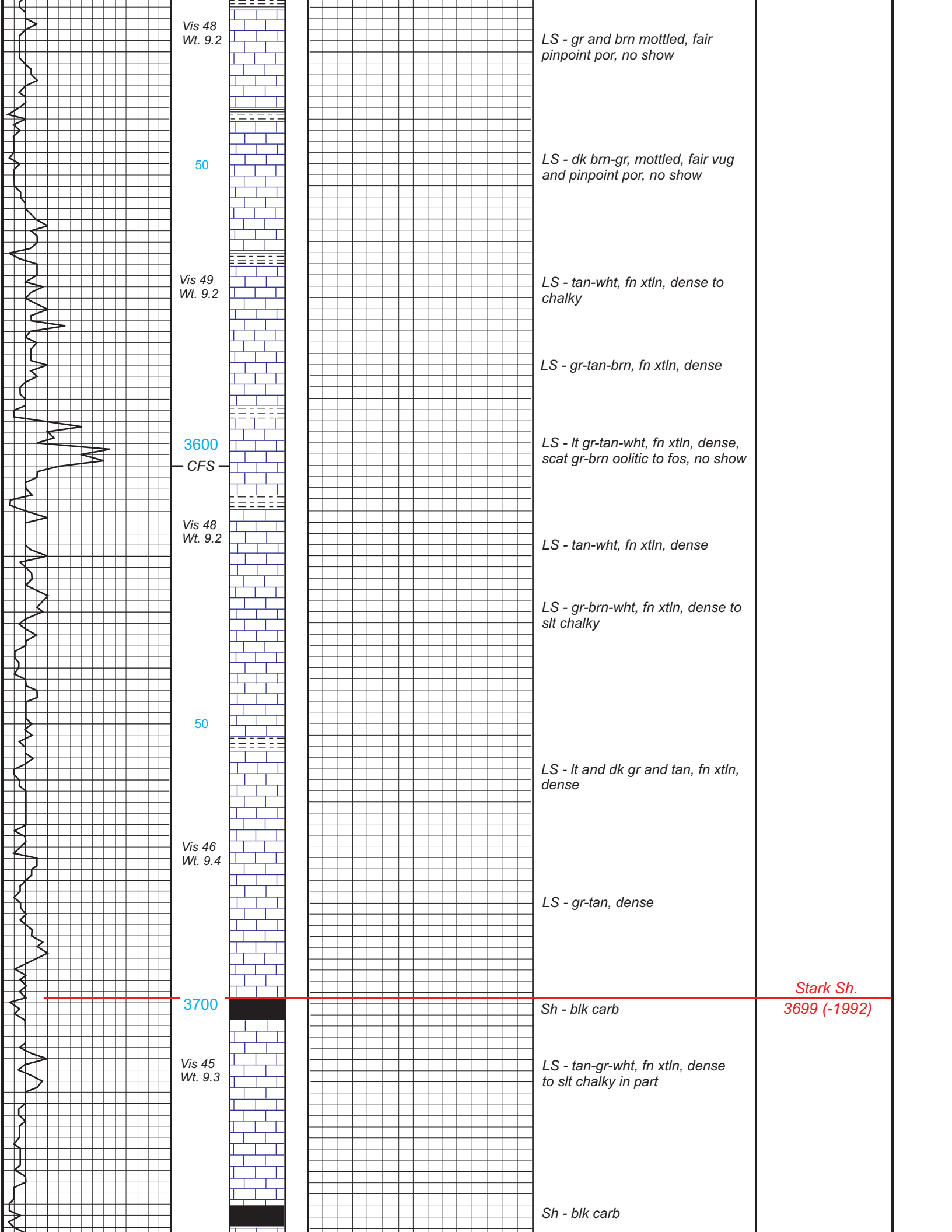
LS - lt gr-tan, fn xtln, scat poor
vug and int xtln por, scat vslt
show oil film, spotty brn stain,
fair odor, dull fluor

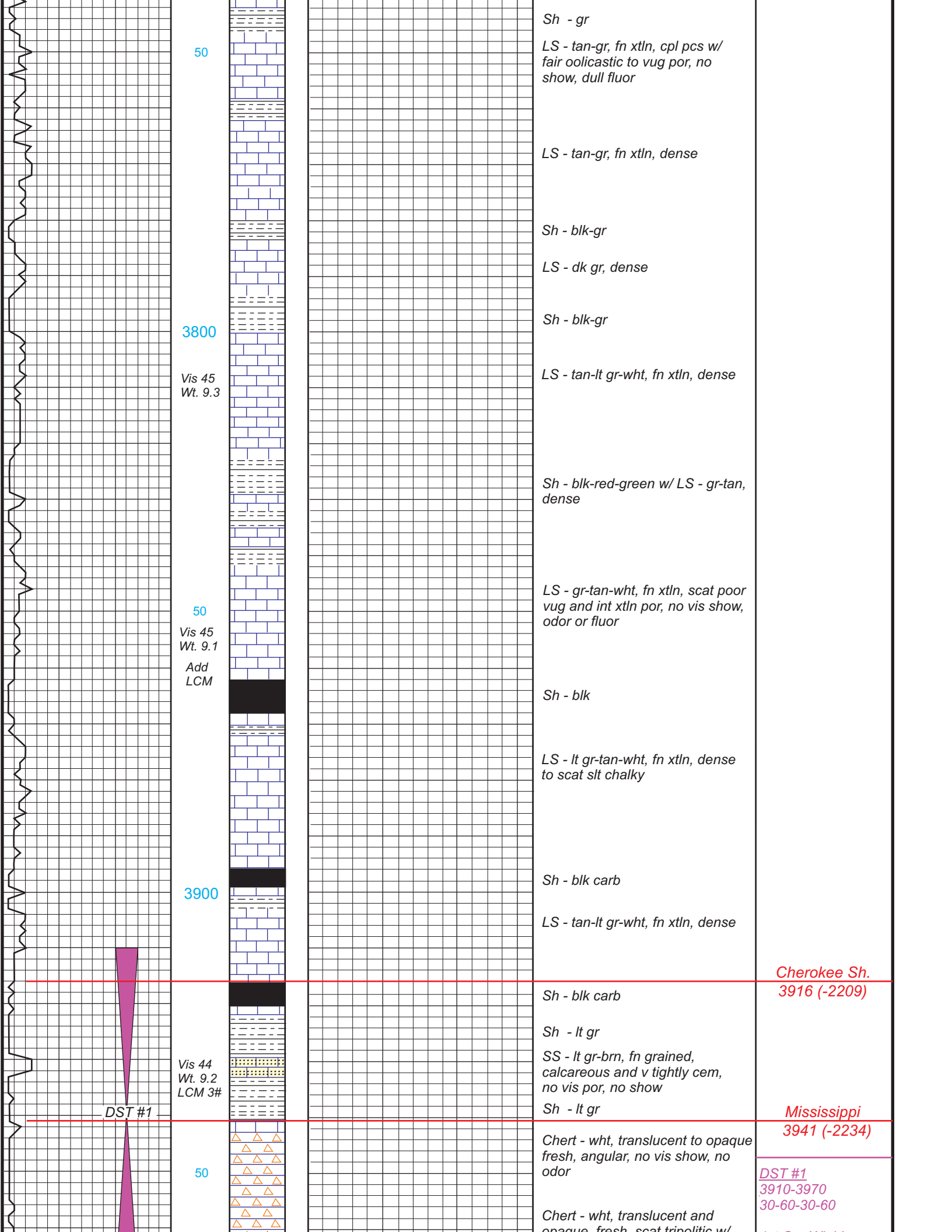
LS - tan-lt gr, fn xtln, dense

LS - lt gr-tan-brn, fn xtln, fair
pinpoint por, no show

LS - gr-tan, fn xtln, dense

Lansing
3413 (-1706)





50

Sh - gr
 LS - tan-gr, fn xtln, cpl pcs w/
 fair oolitic to vug por, no
 show, dull fluor

LS - tan-gr, fn xtln, dense

Sh - blk-gr

LS - dk gr, dense

3800

Sh - blk-gr

Vis 45
 Wt. 9.3

LS - tan-lt gr-wht, fn xtln, dense

Sh - blk-red-green w/ LS - gr-tan,
 dense

50

LS - gr-tan-wht, fn xtln, scat poor
 vug and int xtln por, no vis
 show, odor or fluor

Vis 45
 Wt. 9.1
 Add
 LCM

Sh - blk

LS - lt gr-tan-wht, fn xtln, dense
 to scat slt chalky

3900

Sh - blk carb

LS - tan-lt gr-wht, fn xtln, dense

Cherokee Sh.
 3916 (-2209)

Sh - blk carb

Sh - lt gr

SS - lt gr-brn, fn grained,
 calcareous and v tightly cem,
 no vis por, no show

Vis 44
 Wt. 9.2
 LCM 3#

Sh - lt gr

Mississippi
 3941 (-2234)

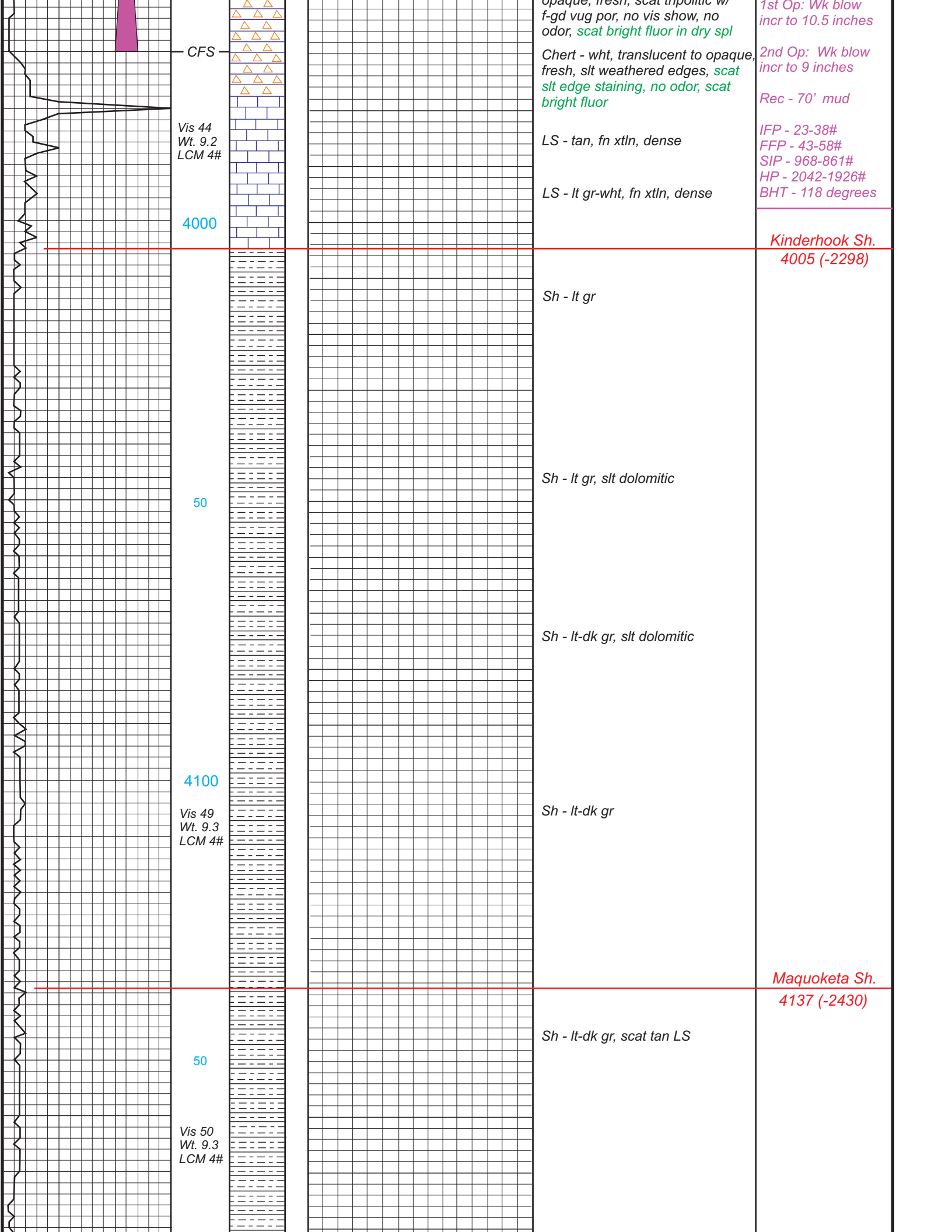
DST #1

Chert - wht, translucent to opaque
 fresh, angular, no vis show, no
 odor

50

Chert - wht, translucent and
 opaque, fresh, scat tricolitic w/

DST #1
 3910-3970
 30-60-30-60



CFS

Vis 44
Wt. 9.2
LCM 4#

4000

50

4100

Vis 49
Wt. 9.3
LCM 4#

50

Vis 50
Wt. 9.3
LCM 4#

Opaque, fresh, scat tripolitic w/ f-gd vug por, no vis show, no odor, scat bright fluor in dry spl

Chert - wht, translucent to opaque, fresh, slt weathered edges, scat slt edge staining, no odor, scat bright fluor

LS - tan, fn xtl, dense

LS - lt gr-wht, fn xtl, dense

Sh - lt gr

Sh - lt gr, slt dolomitic

Sh - lt-dk gr, slt dolomitic

Sh - lt-dk gr

Sh - lt-dk gr, scat tan LS

1st Op: Wk blow incr to 10.5 inches

2nd Op: Wk blow incr to 9 inches

Rec - 70' mud

IFP - 23-38#
FFP - 43-58#
SIP - 968-861#
HP - 2042-1926#
BHT - 118 degrees

Kinderhook Sh.
4005 (-2298)

Maquoketa Sh.
4137 (-2430)

Sh - lt-dk gr, dolomitic in part

LS - tan-brn, fn xtl, dense

Dolo - lt gr-brn, fn xtl to sucrosic, p-fair int xtl por, scat gr vitr chert, scat slt show oil film, scat bright fluor, spty lt brn stain, no odor

Viola
4207 (-2500)

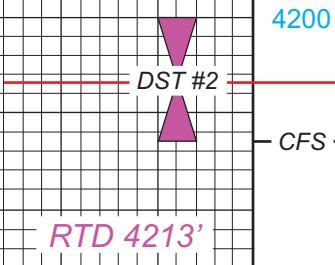
DST #2
4200-4213
30-60-30-60

1st Op: Wk blow
incr to 2 inches

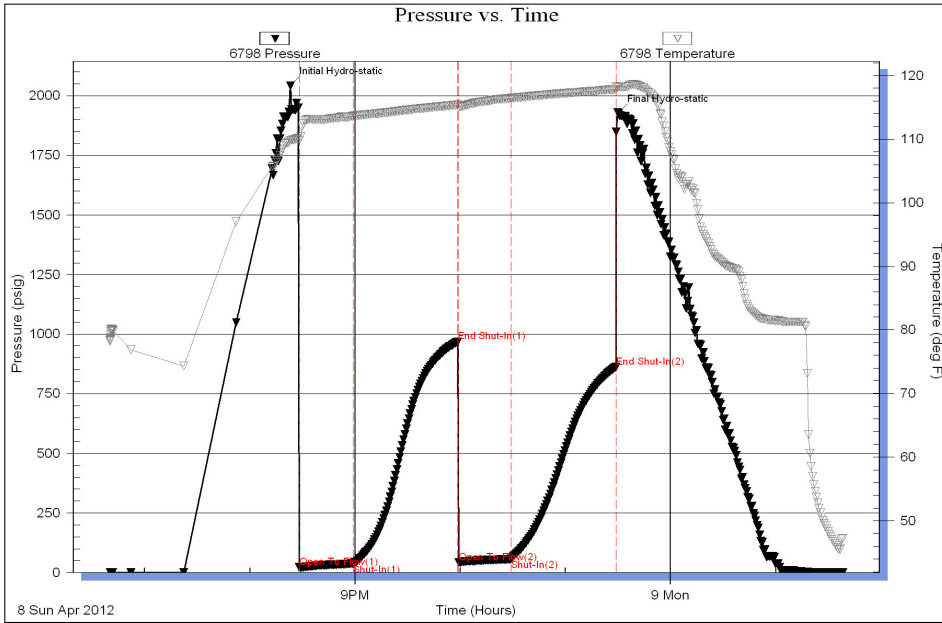
2nd Op: Wk blow
incr to 1-1/2 inches

Rec - 126' water

IFP - 16- 51#
FFP - 52-76#
SIP - 1341-1332#
HP - 2230-2174#
BHT - 129 degrees



Serial #: 6798 Inside R & B Oil & Gas Bock B 1 DST Test Number: 1



DST #1
3910-3970
30-60-30-60

1st Op: Wk blow
incr to 10.5 inches

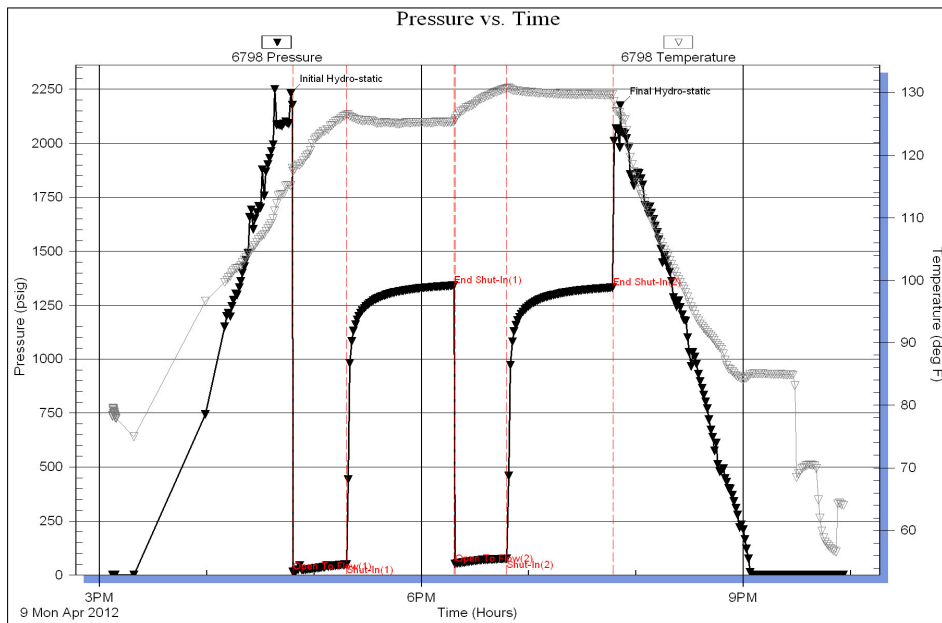
2nd Op: Wk blow
incr to 9 inches

Rec - 70' mud

IFP - 23-38#
FFP - 43-58#
SIP - 968-861#
HP - 2042-1926#
BHT - 118 degrees

Trilobite Testing, Inc Ref. No: 47479 Printed: 2012.04.09 @ 01:57:45

Serial #: 6798 Inside R & B Oil & Gas Bock B 1 DST Test Number: 2



DST #2
4200-4213
30-60-30-60

1st Op: Wk blow
incr to 2 inches

2nd Op: Wk blow
incr to 1-1/2 inches

Rec - 126' water

IFP - 16- 51#
FFP - 52-76#
SIP - 1341-1332#
HP - 2230-2174#
BHT - 129 degrees

Trilobite Testing, Inc Ref. No: 47480 Printed: 2012.04.09 @ 22:12:11

