



TRILOBITE TESTING, INC.

DRILL STEM TEST REPORT

Samuel Gary Jr. & Associates, Inc.

15/12S/17W-Ellis

1515 Wynkoop Ste. 700
Denver, CO 80202

Phil Schmeidler

ATTN: Clayton Camozzi

Job Ticket: 47211

DST#: 1

Test Start: 2012.03.30 @ 22:47:15

GENERAL INFORMATION:

Formation: **Lansing C**

Deviated: No Whipstock: ft (KB)

Time Tool Opened: 00:27:15

Time Test Ended: 05:54:45

Test Type: Conventional Bottom Hole (Initial)

Tester: Dustin Rash

Unit No: 38

Interval: 3400.00 ft (KB) To 3425.00 ft (KB) (TVD)

Reference Elevations: 2150.00 ft (KB)

Total Depth: 3425.00 ft (KB) (TVD)

2142.00 ft (CF)

Hole Diameter: 7.88 inches Hole Condition: Fair

KB to GR/CF: 8.00 ft

Serial #: 8354 Inside

Press @ Run Depth: 36.20 psig @ 3402.00 ft (KB)

Capacity: 8000.00 psig

Start Date: 2012.03.30

End Date:

2012.03.31

Last Calib.:

2012.03.31

Start Time:

22:57:15

End Time:

05:54:45

Time On Btm:

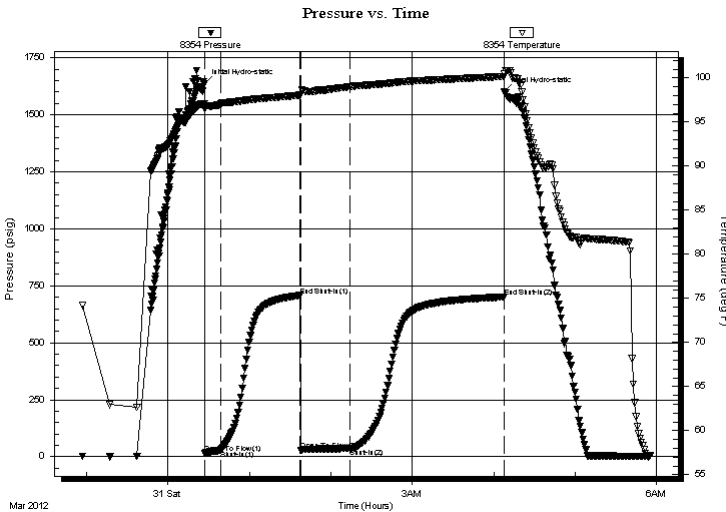
2012.03.31 @ 00:27:05

Time Off Btm:

2012.03.31 @ 04:07:45

TEST COMMENT: IF-Very weak building blow . Built to 1 inch.
 IS-No Return.
 FF-Very weak building blow . Built to 6 inches.
 FS-No Return. Times-10-60-35-110

PRESSURE SUMMARY



Time (Min.)	Pressure (psig)	Temp (deg F)	Annotation
0	1638.96	97.12	Initial Hydro-static
1	16.82	96.46	Open To Flow (1)
12	28.48	97.05	Shut-In(1)
71	707.33	98.04	End Shut-In(1)
71	28.61	98.13	Open To Flow (2)
108	36.20	99.02	Shut-In(2)
221	701.27	100.17	End Shut-In(2)
221	1602.24	100.48	Final Hydro-static

Recovery

Length (ft)	Description	Volume (bbl)
45.00	10%Oil/90%Mud	0.35

Gas Rates

Choke (inches)	Pressure (psig)	Gas Rate (Mcf/d)



TRILOBITE
TESTING, INC.

DRILL STEM TEST REPORT

Samuel Gary Jr. & Associates, Inc.

15/12S/17W-Ellis

1515 Wynkoop Ste. 700
Denver, CO 80202

Phil Schmeidler

ATTN: Clayton Camozzi

Job Ticket: 47211

DST#: 1

Test Start: 2012.03.30 @ 22:47:15

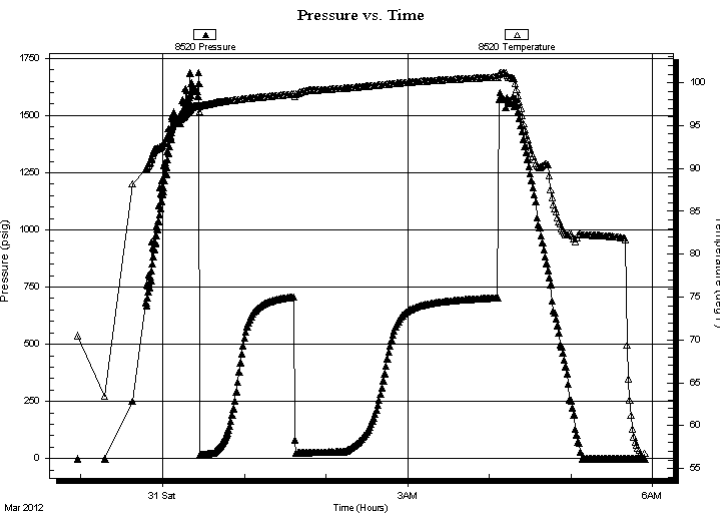
GENERAL INFORMATION:

Formation: **Lansing C**
 Deviated: No Whipstock: ft (KB)
 Test Type: Conventional Bottom Hole (Initial)
 Time Tool Opened: 00:27:15
 Tester: Dustin Rash
 Time Test Ended: 05:54:45
 Unit No: 38
 Interval: **3400.00 ft (KB) To 3425.00 ft (KB) (TVD)**
 Reference Elevations: 2150.00 ft (KB)
 Total Depth: 3425.00 ft (KB) (TVD)
 2142.00 ft (CF)
 Hole Diameter: 7.88 inches
 Hole Condition: Fair
 KB to GR/CF: 8.00 ft

Serial #: 8520 Outside

Press@RunDepth: psig @ 3402.00 ft (KB) Capacity: 8000.00 psig
 Start Date: 2012.03.30 End Date: 2012.03.31 Last Calib.: 2012.03.31
 Start Time: 22:57:30 End Time: 05:54:30 Time On Btm:
 Time Off Btm:

TEST COMMENT: IF-Very weak building blow . Built to 1 inch.
 IS-No Return.
 FF-Very weak building blow . Built to 6 inches.
 FS-No Return. Times-10-60-35-110



PRESSURE SUMMARY

Time (Min.)	Pressure (psig)	Temp (deg F)	Annotation

Recovery

Length (ft)	Description	Volume (bbl)
45.00	10%Oil/90%Mud	0.35

Gas Rates

	Choke (inches)	Pressure (psig)	Gas Rate (Mcf/d)



**TRILOBITE
TESTING, INC.**

DRILL STEM TEST REPORT

Samuel Gary Jr. & Associates, Inc.

15/12S/17W-Ellis

1515 Wynkoop Ste. 700
Denver, CO 80202

Phil Schmeidler

Job Ticket: 47211

DST#: 1

ATTN: Clayton Camozzi

Test Start: 2012.03.30 @ 22:47:15

GENERAL INFORMATION:

Formation: **Lansing C**

Deviated: No Whipstock: ft (KB)

Time Tool Opened: 00:27:15

Time Test Ended: 05:54:45

Test Type: Conventional Bottom Hole (Initial)

Tester: Dustin Rash

Unit No: 38

Interval: 3400.00 ft (KB) To 3425.00 ft (KB) (TVD)

Reference Elevations: 2150.00 ft (KB)

Total Depth: 3425.00 ft (KB) (TVD)

2142.00 ft (CF)

Hole Diameter: 7.88 inches Hole Condition: Fair

KB to GR/CF: 8.00 ft

Serial #: 8653 Fluid

Press @ Run Depth: psig @ 3370.00 ft (KB)

Capacity: 8000.00 psig

Start Date: 2012.03.30

End Date:

2012.03.31

Last Calib.:

2012.03.31

Start Time: 22:47:46

End Time:

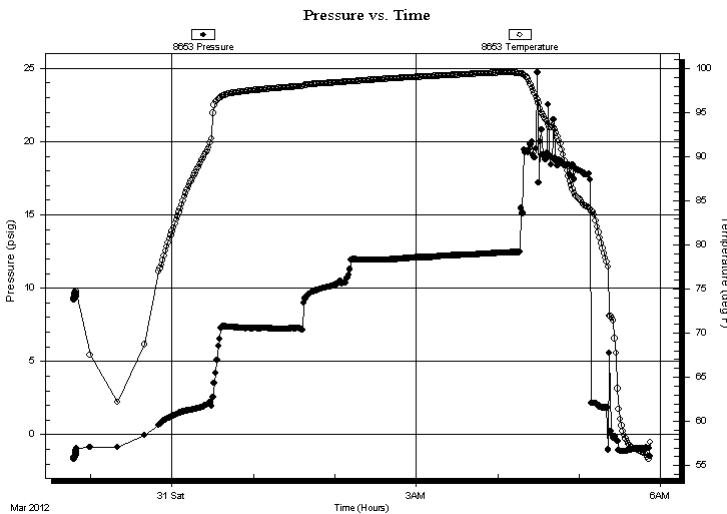
05:52:45

Time On Btm:

Time Off Btm:

TEST COMMENT: IF-Very weak building blow . Built to 1 inch.
 IS-No Return.
 FF-Very weak building blow . Built to 6 inches.
 FS-No Return. Times-10-60-35-110

PRESSURE SUMMARY



Time (Min.)	Pressure (psig)	Temp (deg F)	Annotation

Recovery

Length (ft)	Description	Volume (bbl)
45.00	10%Oil/90%Mud	0.35

Gas Rates

	Choke (inches)	Pressure (psig)	Gas Rate (Mcf/d)



**TRILOBITE
TESTING, INC.**

DRILL STEM TEST REPORT

FLUID SUMMARY

Samuel Gary Jr. & Associates, Inc.

15/12S/17W-Ellis

1515 Wynkoop Ste. 700
Denver, CO 80202

Phil Schmeidler

Job Ticket: 47211

DST#: 1

ATTN: Clayton Camozzi

Test Start: 2012.03.30 @ 22:47:15

Mud and Cushion Information

Mud Type: Gel Chem

Cushion Type:

Oil API:

deg API

Mud Weight: 9.00 lb/gal

Cushion Length:

ft

Water Salinity:

ppm

Viscosity: 46.00 sec/qt

Cushion Volume:

bbbl

Water Loss: 8.18 in³

Gas Cushion Type:

Resistivity: ohm.m

Gas Cushion Pressure:

psig

Salinity: 4000.00 ppm

Filter Cake: inches

Recovery Information

Recovery Table

Length ft	Description	Volume bbl
45.00	10%Oil/90%Mud	0.349

Total Length: 45.00 ft Total Volume: 0.349 bbl

Num Fluid Samples: 0

Num Gas Bombs: 0

Serial #:

Laboratory Name:

Laboratory Location:

Recovery Comments: Sampler-2000ML total. 500ML Oil. 1500ML Mud.
Could not get an accurate pressure reading.

Serial #: 8354

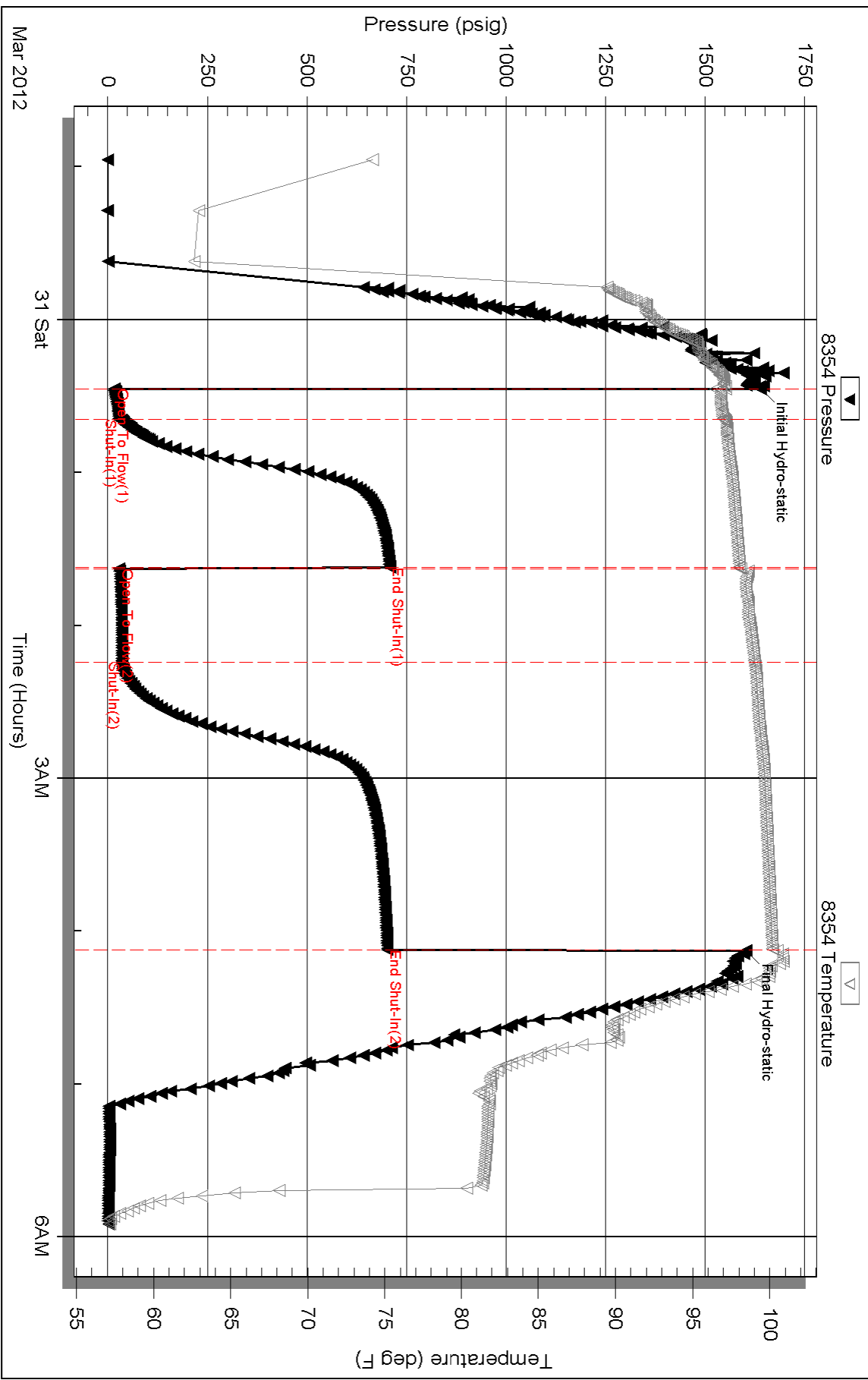
Inside

Samuel Gary Jr. & Associates, Inc.

Phil Schneider

DST Test Number: 1

Pressure vs. Time



Triobite Testing, Inc

Ref. No: 47211

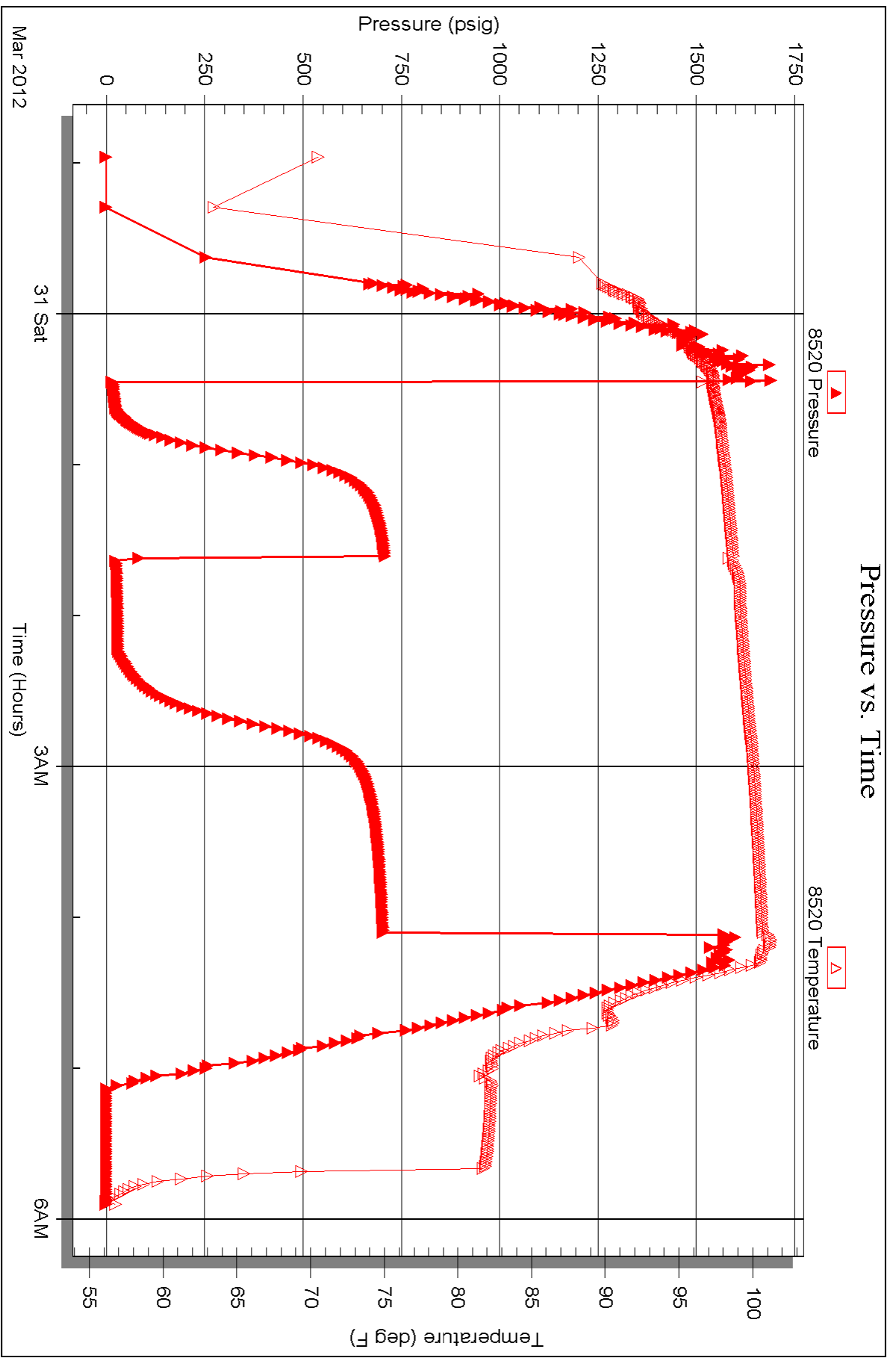
Printed: 2012.03.31 @ 10:58:36

Serial #: 8520

Outside Samuel Gary Jr. & Associates, Inc.

Phil Schneider

DST Test Number: 1



Serial #: 8653

Fluid

Samuel Gary Jr. & Associates, Inc.

Phil Schneider

DST Test Number: 1

