

T28S, R2W, 6th P.M.

SGOMI

Well location, MEANS 2802 #17-1H, located as shown in the SW 1/4 SE 1/4 of Section 17, T28S, R2W, 6th P.M., Sedgwick County, Kansas.

BASIS OF ELEVATION

BLACK ELEVATION LOCATED AT THE NORTHEAST CORNER OF SECTION 25, T31S, R4W, 6th P.M. TAKEN FROM THE MILAN, QUADRANGLE, KANSAS, SUMNER COUNTY, 7.5 MINUTE QUAD (TOPOGRAPHIC MAP) PUBLISHED BY THE UNITED STATES DEPARTMENT OF THE INTERIOR, GEOLOGICAL SURVEY. SAID ELEVATION IS MARKED AS BEING 1333 FEET.

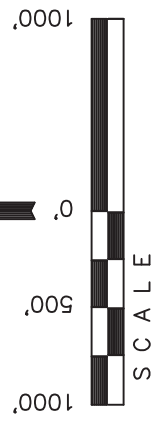
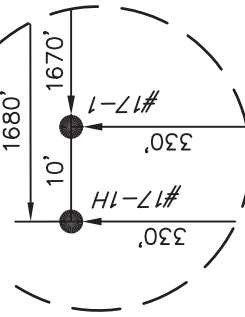
BASIS OF BEARINGS

LEGEND: BASIS OF BEARINGS IS A G.P.S. OBSERVATION.

- └ = 90° SYMBOL
- = PROPOSED WELL HEAD.
- ▲ = SECTION CORNERS LOCATED.

Detail "A"

No Scale



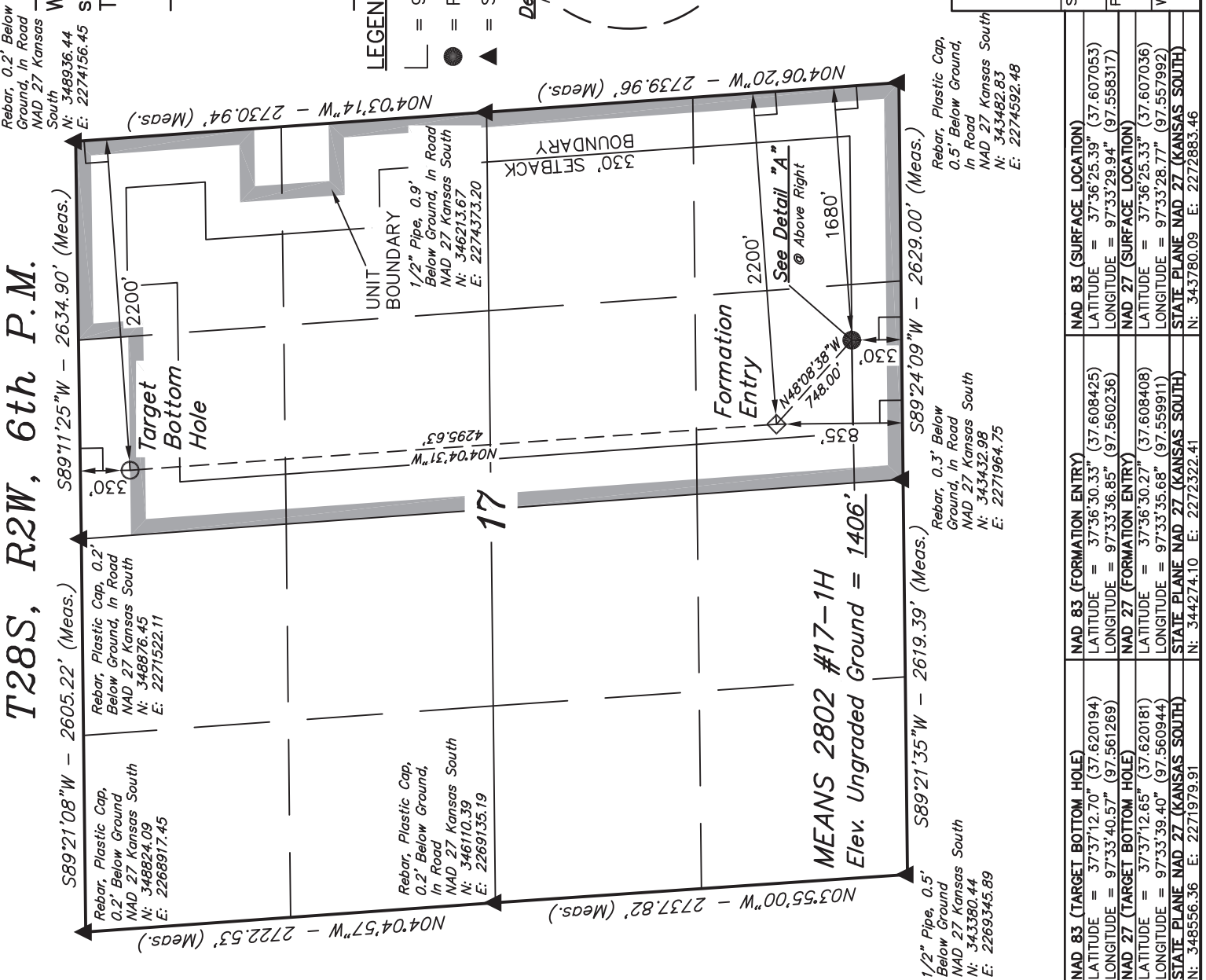
CERTIFICATE

THIS IS TO CERTIFY THAT THE ABOVE PLAT WAS PREPARED FROM FIELD NOTES OF ACTUAL SURVEYS MADE BY ME ON OR UNDER MY SUPERVISION AND THAT THE SAME ARE TRUE AND CORRECT TO THE BEST OF MY KNOWLEDGE AND BELIEF.

JUSTIN W. GORCE
 Registered Land Surveyor
 Registration No. N 8781
 State of Kansas
 No. 1451

UINTAH ENGINEERING & LAND SURVEYING
 85 SOUTH 200 EAST - VERNAL, UTAH 84078
 (435) 789-1017

SCALE	DATE SURVEYED:	DATE DRAWN:
1" = 1000'	07-03-12	07-11-12
PARTY	REFERENCES	
J.P. B.L. J.J.	G.L.O. PLAT	
WEATHER	FILE	
WARM	SGOMI	



MEANS 2802 #17-1H
 Elev. Ungraded Ground = 1406'

NAD 83 (TARGET BOTTOM HOLE)	NAD 83 (FORMATION ENTRY)	NAD 83 (SURFACE LOCATION)
LATITUDE = 37°37'12.70" (37.620194)	LATITUDE = 37°36'30.33" (37.608425)	LATITUDE = 37°36'25.39" (37.607053)
LONGITUDE = 97°33'40.57" (97.561269)	LONGITUDE = 97°33'36.85" (97.560236)	LONGITUDE = 97°33'29.94" (97.558317)
NAD 27 (TARGET BOTTOM HOLE)	NAD 27 (FORMATION ENTRY)	NAD 27 (SURFACE LOCATION)
LATITUDE = 37°37'12.65" (37.620181)	LATITUDE = 37°36'30.27" (37.608408)	LATITUDE = 37°36'25.33" (37.607036)
LONGITUDE = 97°33'39.40" (97.560944)	LONGITUDE = 97°33'35.68" (97.559911)	LONGITUDE = 97°33'28.77" (97.557992)
STATE PLANE NAD 27 (KANSAS SOUTH)	STATE PLANE NAD 27 (KANSAS SOUTH)	STATE PLANE NAD 27 (KANSAS SOUTH)
N: 348556.36 E: 2271979.91	N: 344274.10 E: 2272322.41	N: 343780.09 E: 2272883.46