

SGOMI

LOCATION LAYOUT FOR

KNORP FARMS 3410 #34-1, #34-1H & #34-2H
SECTION 34, T34S, R10W, 6th P.M.
NE 1/4 NE 1/4

FIGURE #1

SCALE: 1" = 60'

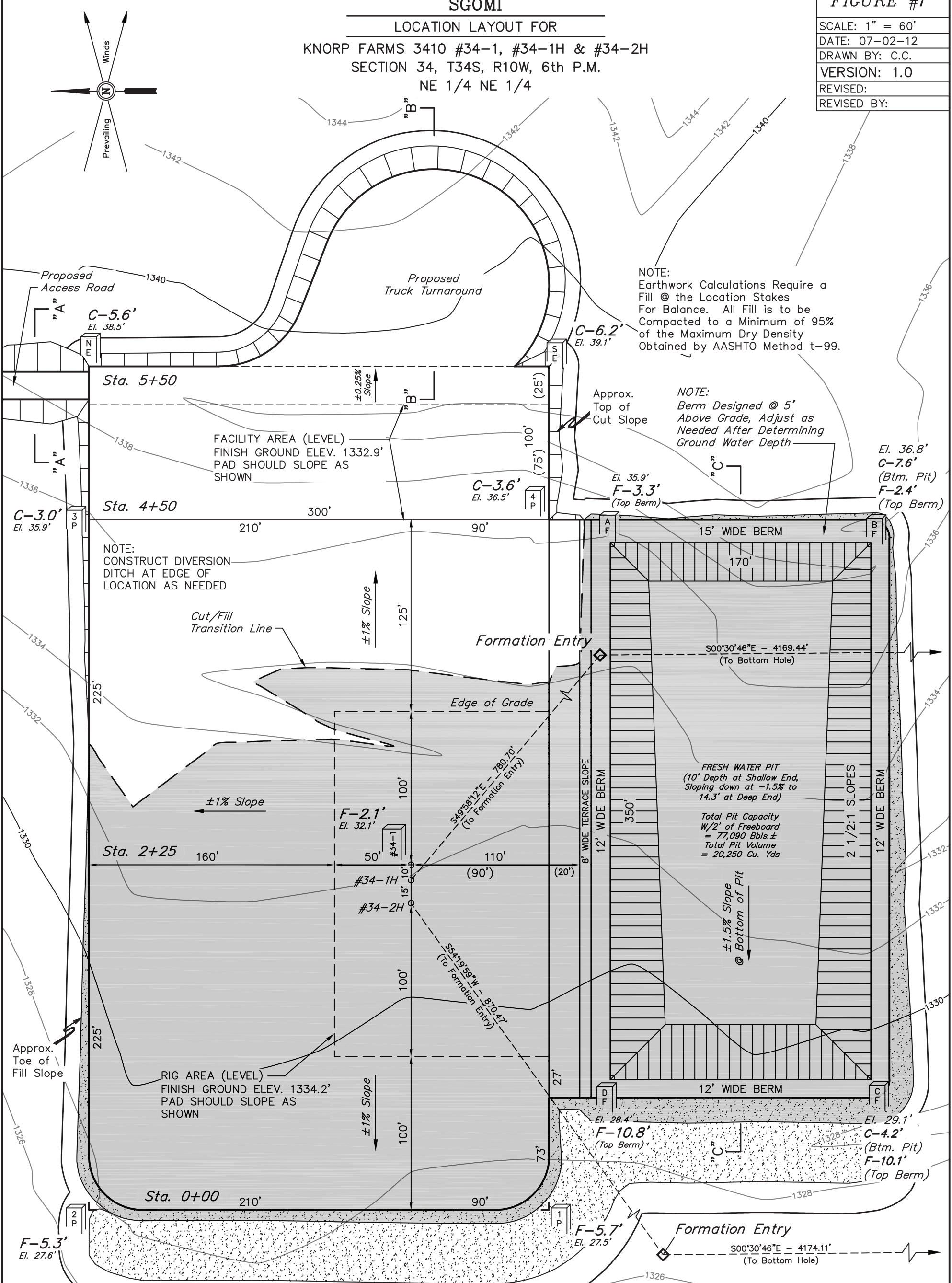
DATE: 07-02-12

DRAWN BY: C.C.

VERSION: 1.0

REVISED:

REVISED BY:



NOTE:
Earthwork Calculations Require a
Fill @ the Location Stakes
For Balance. All Fill is to be
Compacted to a Minimum of 95%
of the Maximum Dry Density
Obtained by AASHTO Method t-99.

NOTE:
Berm Designed @ 5'
Above Grade, Adjust as
Needed After Determining
Ground Water Depth

NOTE:
CONSTRUCT DIVERSION
DITCH AT EDGE OF
LOCATION AS NEEDED

FRESH WATER PIT
(10' Depth at Shallow End,
Sloping down at -1.5% to
14.3' at Deep End)

Total Pit Capacity
W/2' of Freeboard
= 77,090 Bbbls.±
Total Pit Volume
= 20,250 Cu. Yds

BEARINGS AND DISTANCES FROM BENCHMARK TO STAKED POSITIONS					
STAKED POSITION	BEARING	DISTANCE	STAKED POSITION	BEARING	DISTANCE
#34-1 LOCATION STAKE	S00°01'38"W	303.10'	PIT CORNER A	S25°51'08"E	481.23'
#34-1H LOCATION STAKE	S01°55'07"W	303.24'	PAD CORNER B	S19°11'01"E	638.54'
#34-2H LOCATION STAKE	S04°45'02"W	304.10'	PAD CORNER C	S13°04'51"W	619.19'
PAD CORNER 1	S29°48'13"W	453.08'	PAD CORNER D	S17°55'46"W	455.19'
PAD CORNER 2	S67°33'25"W	243.62'	NE FACILITIES CORNER	S73°59'27"E	337.94'
PAD CORNER 3	S67°31'31"E	243.45'	SE FACILITIES CORNER	S39°34'45"E	510.04'
PAD CORNER 4	S29°46'18"E	452.95'			

Elev. Ungraded Ground At #34-1 Loc. Stake = 1332.1'
FINISHED GRADE ELEV. AT #34-1 LOC. STAKE = 1334.2'