

Tim J. Lauer

Petroleum Geologist

Office 316.832.0530
Cell 316.253.1275

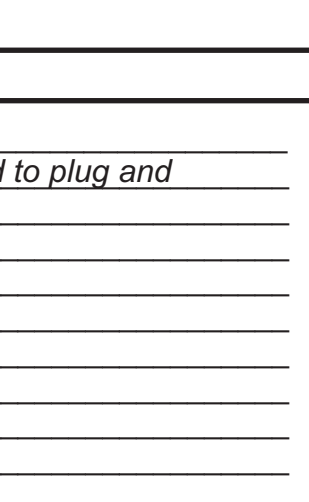
GEOLOGIST'S REPORT

DRILLING TIME AND SAMPLE LOG

| | | | |
|-----------------------------|-------------------------------|----------|-------------|
| COMPANY | Coral Production Corporation | | |
| LEASE | #25-1 Struss | | |
| FIELD | WC | | |
| LOCATION | 230' FSL, 800' FWL of Section | | |
| SEC | 25 | TWSP | 11s RGE 24w |
| COUNTY | Trego | STATE | Kansas |
| CONTRACTOR | Maverick Drilling Rig #108 | | |
| SPUD | 6-26-2012 | COMP | 7-4-2012 |
| RTD | 4300' | LTD | 4300' |
| MUD UP | 3250 | TYPE MUD | Chemical |
| SAMPLES SAVED FROM | 3550' TO RTD | | |
| DRILLING TIME KEPT FROM | 3550' TO RTD | | |
| SAMPLES EXAMINED FROM | 3550' TO RTD | | |
| GEOLOGICAL SUPERVISION FROM | 3650' TO RTD | | |
| GEOLOGIST ON WELL | Tim J. Lauer | | |

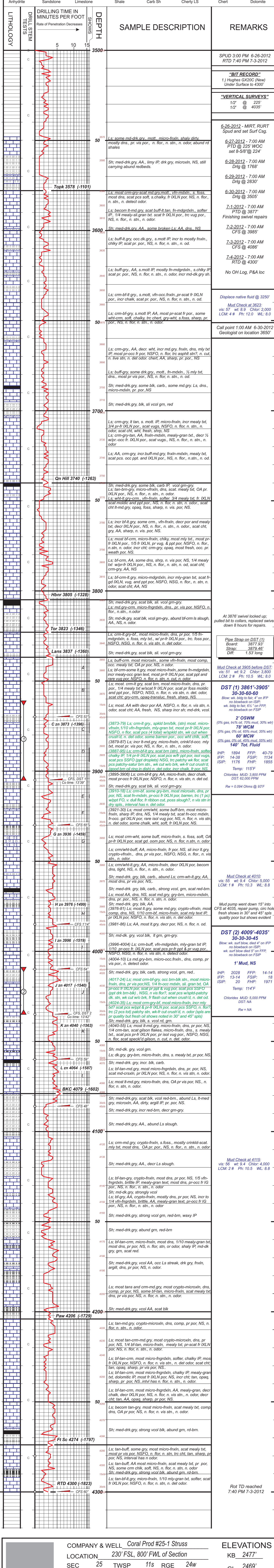
| | |
|---------------------------|---------------|
| ELEVATIONS | KB 2477' |
| DF | |
| GL | 2469' |
| Measurements Are All From | Kelly Bushing |
| CASING | |
| CONDUCTOR | |
| SURFACE | 8-5/8" @ 224' |
| PRODUCTION | |
| ELECTRICAL SURVEYS | |

| FORMATION TOPS | ELECTRIC LOG | SAMPLE LOG |
|----------------|--------------|--------------|
| Anhydrite | | 2049 (+428) |
| Topeka | | 3578 (-1101) |
| Heebner | | 3805 (-1328) |
| Toronto | | 3823 (-1346) |
| Lansing | | 3837 (-1360) |
| Base Ks. City | | 4079 (-1602) |
| Mamaton | | 4131 (-1654) |
| Pawnee | | 4206 (-1729) |
| Total Depth | | 4300 (-1823) |



REMARKS
Due to sample shows, and drill stem test results, operator elected to plug and abandon the location.

Respectfully submitted,
Tim J. Lauer
Tim J. Lauer
7-4-2012



| | | | |
|----------------|-------------------------------|------------|----------|
| COMPANY & WELL | Coral Prod #25-1 Struss | ELEVATIONS | KB 2477' |
| LOCATION | 230' FSL, 800' FWL of Section | GL | 2469' |
| SEC | 25 TWSP 11s RGE 24w | | |
| COUNTY | Trego STATE Kansas | | |