

Tim J. Lauer

Petroleum Geologist

Office 316.832.0530
Cell 316.253.1275

GEOLOGIST'S REPORT

DRILLING TIME AND SAMPLE LOG

COMPANY Coral Production Corporation
 LEASE #25-1 Struss
 FIELD WC
 LOCATION 230' FSL, 800' FWL of Section
 SEC 25 TWSP 11s RGE 24w
 COUNTY Trego STATE Kansas
 CONTRACTOR Maverick Drilling Rig #108
 SPUD 6-26-2012 COMP 7-4-2012
 RTD 4300' LTD 4300'
 MUD UP 3250 TYPE MUD Chemical
 SAMPLES SAVED FROM 3550' TO RTD
 DRILLING TIME KEPT FROM 3550' TO RTD
 SAMPLES EXAMINED FROM 3550' TO RTD
 GEOLOGICAL SUPERVISION FROM 3650' to RTD
 GEOLOGIST ON WELL Tim J. Lauer

ELEVATIONS
KB 2477'

DF _____

GL 2469'

Measurements Are All From Kelly Bushing

CASING

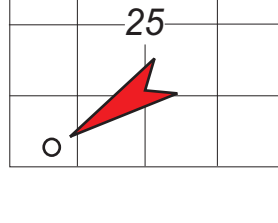
CONDUCTOR _____
SURFACE 8-5/8" @ 224'

PRODUCTION _____

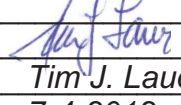
ELECTRICAL SURVEYS

No OH logs run

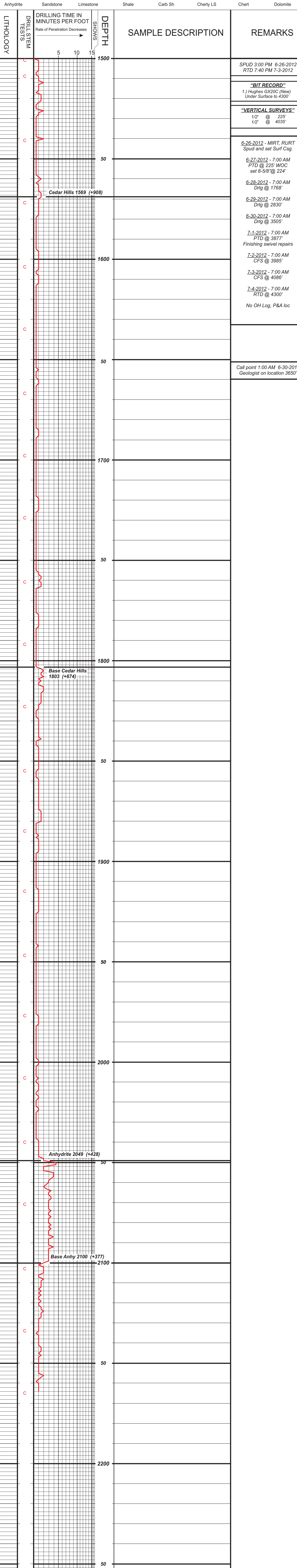
FORMATION TOPS	ELECTRIC LOG	SAMPLE LOG
Anhydrite		2049 (+428)
Topeka		3578 (-1101)
Heebner		3805 (-1328)
Toronto		3823 (-1346)
Lansing		3837 (-1360)
Base Ks. City		4079 (-1602)
Marmaton		4131 (-1654)
Pawnee		4206 (-1729)
Total Depth		4300 (-1823)



COMPANY & WELL Coral Prod. Corp. #25-1 Struss
 LOCATION 230' FSL, 800' FWL of Section
 SEC 25 TWSP 11s RGE 24w
 COUNTY Trego STATE Kansas
 ELEVATIONS
 KB 2477'
 GL 2469'

REMARKS
Due to sample shows, drill stem test results, operator elected to plug and abandon the location.
Respectfully submitted,

 Tim J. Lauer
 7-4-2012

LEGEND



COMPANY & WELL Coral Prod #25-1 Struss
 LOCATION 230' FSL, 800' FWL of Section
 SEC 25 TWSP 11s RGE 24w
 COUNTY Trego STATE Kansas
 ELEVATIONS
 KB 2477'
 GL 2469'