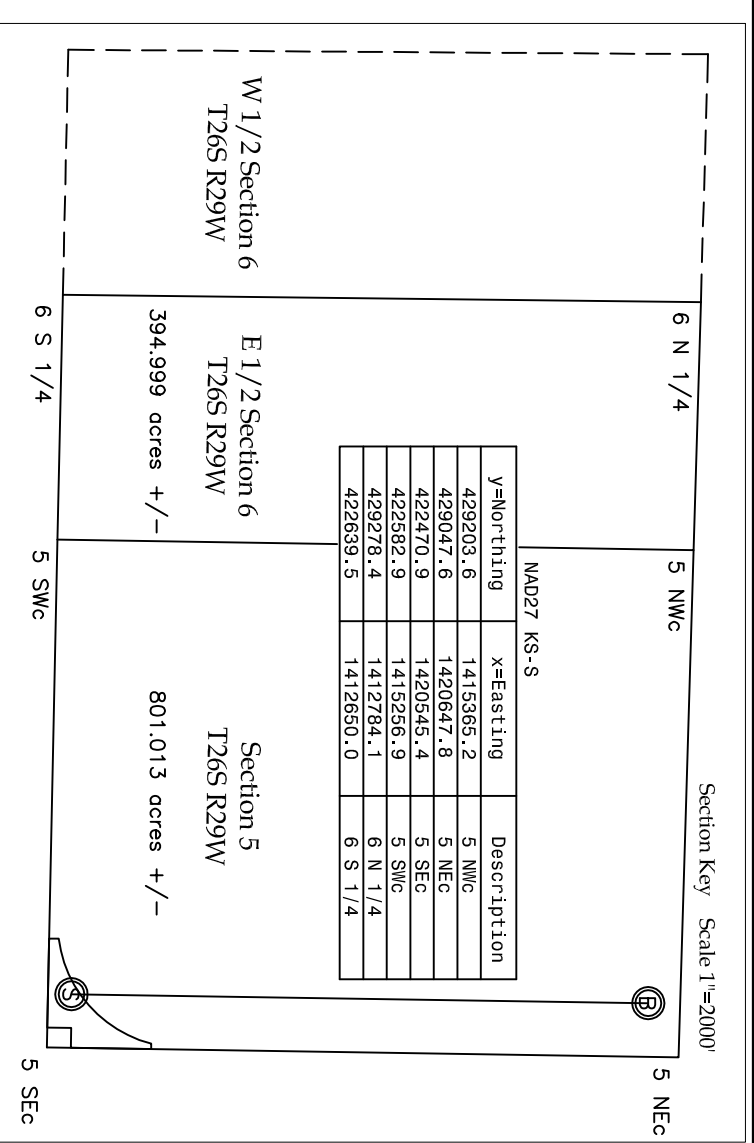
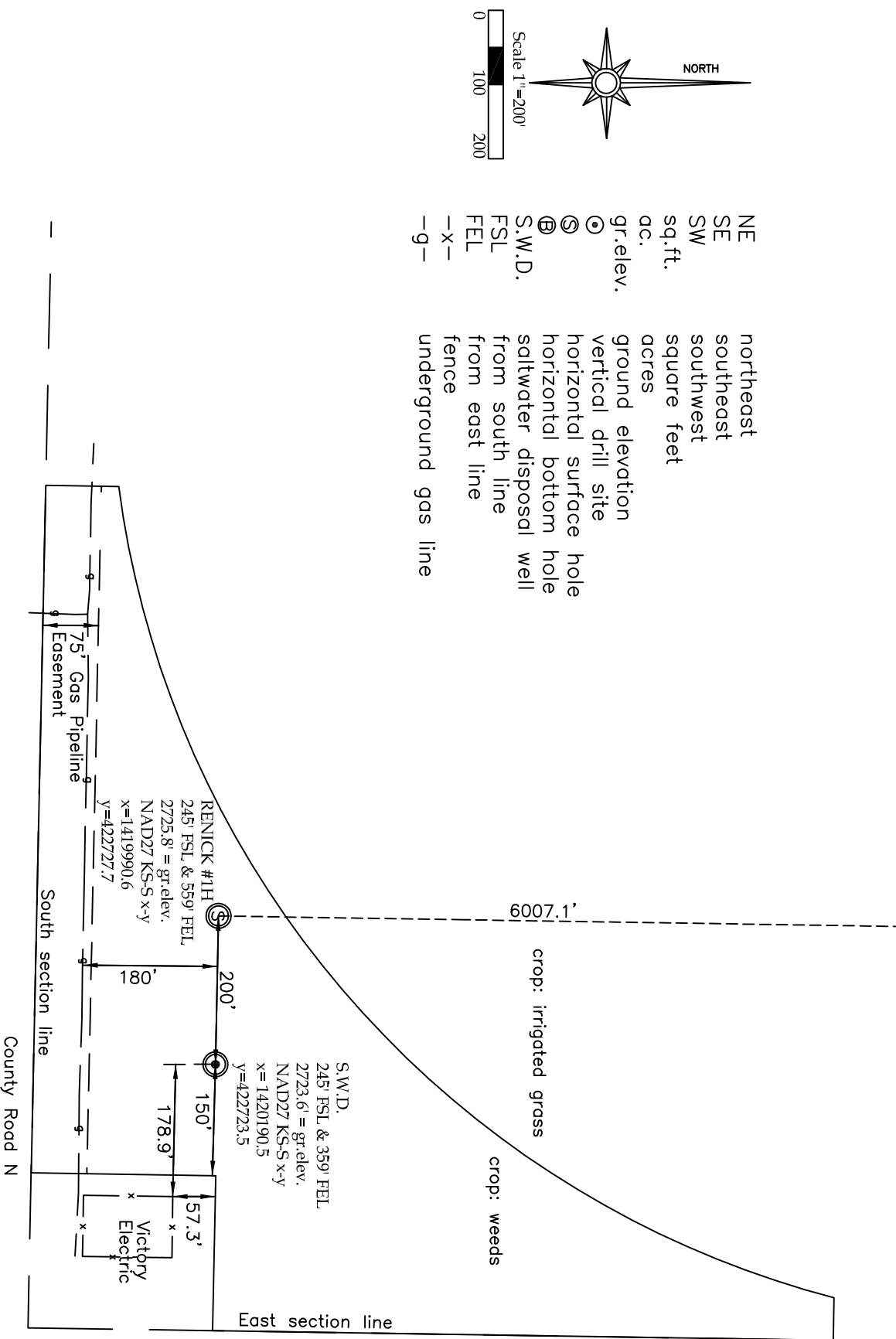


A Supplemental Sketch

in Gray County, Kansas
 Located in the SE 1/4 of Section 5, T26S, R29W of the 6th P.M.,
 in Gray County, Kansas
 Sheet 1 of 3

Bottom Hole
 330' FNL & 559' FEL
 NAD27 KS-S x-y
 x=1420084.1
 y=428734.1



Notes:

- The purpose of this sketch is to show the relationship of the SWD and top and bottom hole locations for the Rennick #11H to the lease lines in Sections 5 and 6 of T26S, R29W.
- Parcel boundary described in a separate map.
- BASIS OF COORDINATES: Coordinates and elevation are based on the NGS station Ingalls with a published position of 37 51 23.37640(N) 100 29 35.03091(W) and a published height of 2795 which is converted through the use of Corpsccon version 6.0.1 (<http://www.tec.army.mil/>) to NAD27 KS-S x-y position of Easting/x= 1424743.0 Northing/y=439371.9.

A Supplemental Sketch Sanchez Oil & Gas

Sec. 5, T26S, R29W 6th P.M., Gray County, Kansas

Scale 1"=200' 0526s29wgrusgs.dwg 0526s29w.crd

PRO-STAKE LLC

Construction Site Staking

PO Box 2324

Garden City, KS 67846

(620) 272-1499

Date 7-14-2012

Revisions