

THIS DRAWING DOES NOT REPRESENT A BOUNDARY SURVEY. DISTANCES, COORDINATES AND BEARINGS SHOWN ARE NOT INTENDED TO BE DEFINITIVE IN ESTABLISHING ACTUAL TITLE BOUNDRIES. THIS DWAWING IS FOR CONSTRUCTION PURPOSES ONLY.

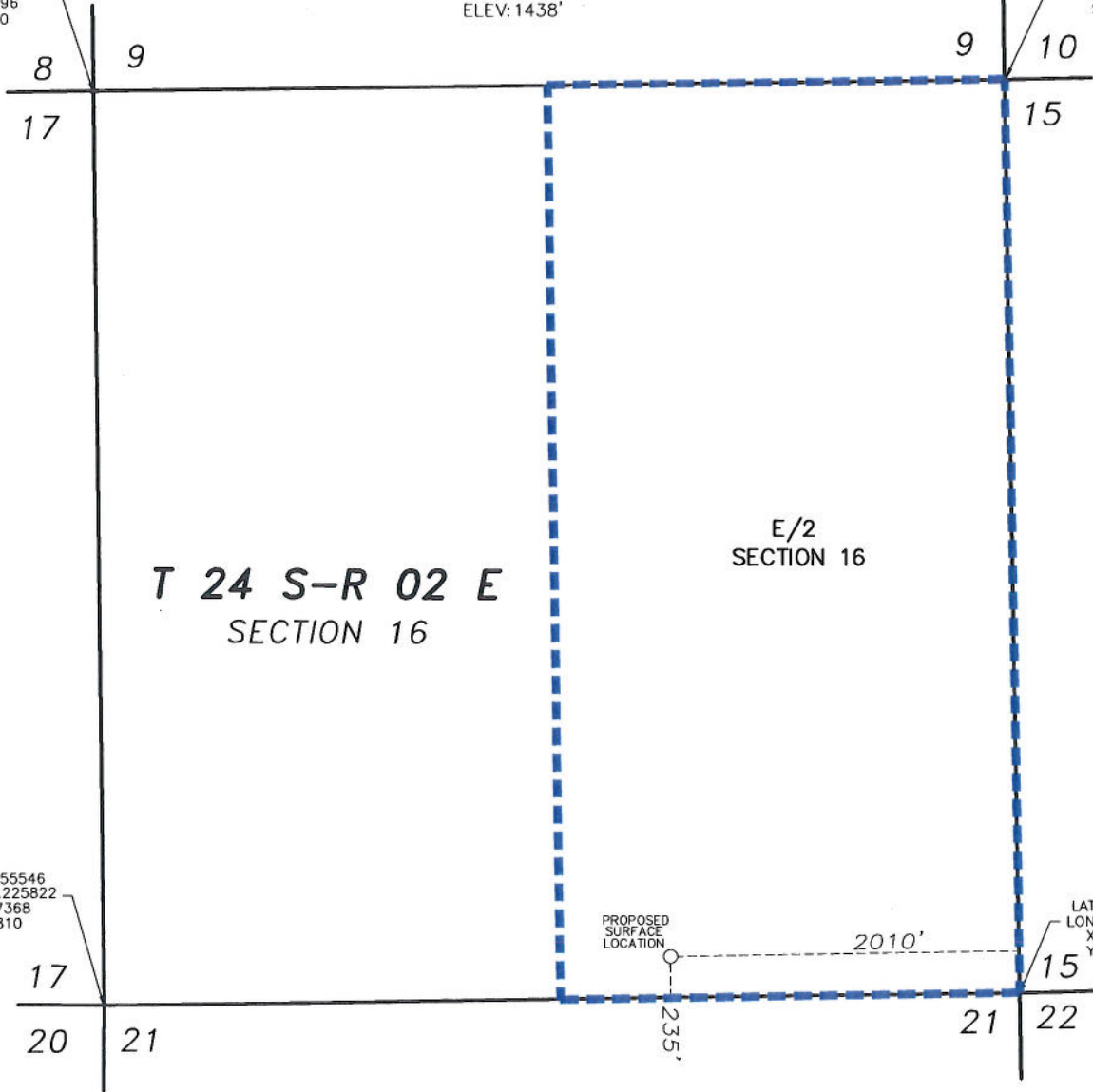
All Bearings, Distances, and Coordinates shown hereon are based on the Kansas State Plane Coordinate System, N.A.D. 27 Datum, South Zone.

**PROPOSED
SURFACE LOCATION
2010' FEL & 235' FSL
OF SECTION 16**

LAT: 37.956196
LON: -97.214376
X: 2370664
Y: 472092
ELEV: 1438'

1/2"IRF
LAT:37.970075
LON:-97.225818
X:2367296
Y:477100

LAT:37.970069
LON:-97.207471
X:2372585
Y:477171



LAT:37.955546
LON:-97.225822
X:2367368
Y:471810

LAT:37.955553
LON:-97.207404
X:2372677
Y:471885

----- = UNIT LINE

FINAL COPY

**PROPOSED WELL LOCATION
ENCANA OIL & GAS (USA) INC.
NATTIER 16V-1 SWD
HARVEY COUNTY, KANSAS
SCALE: 1" = 1000'**