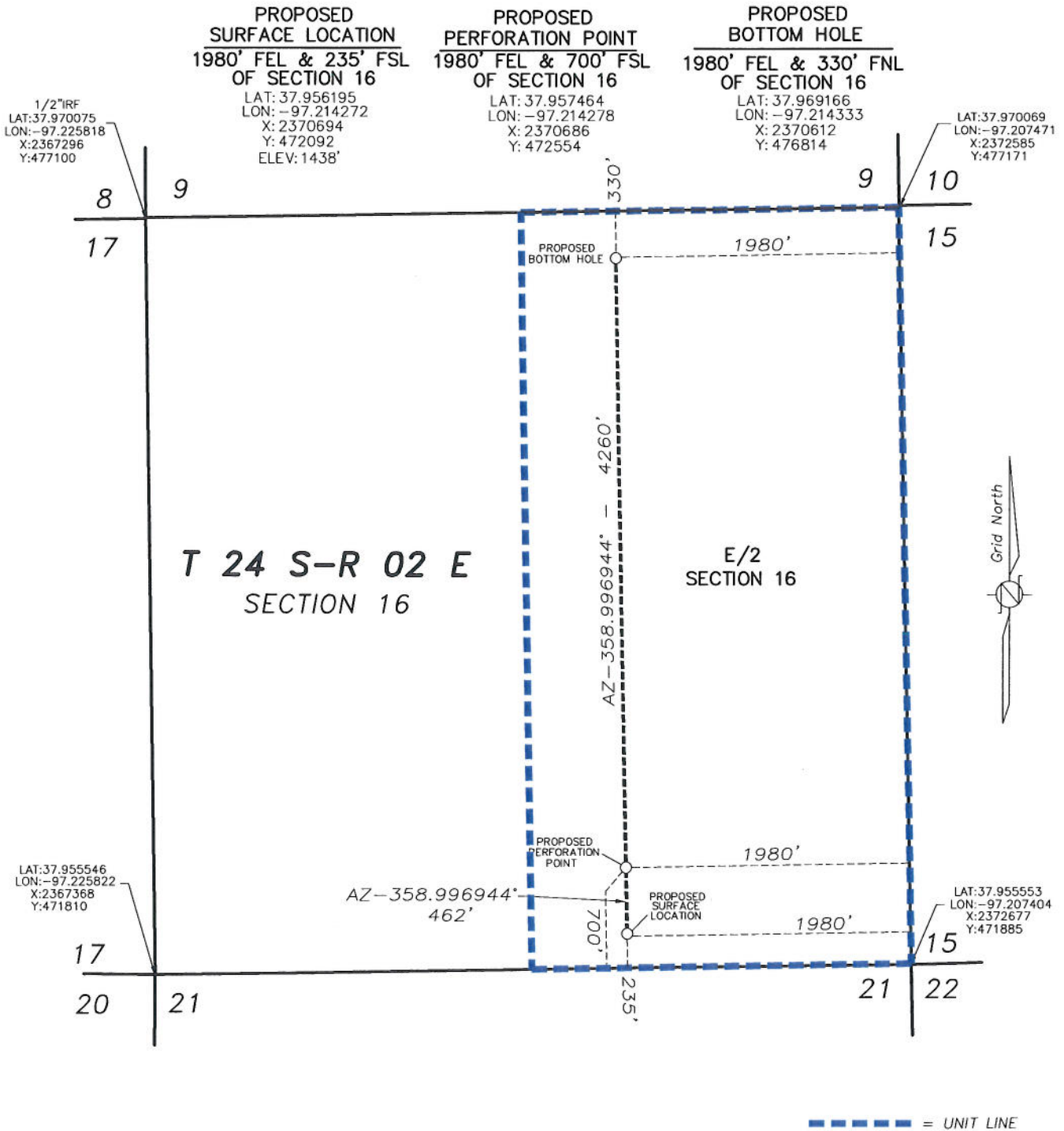


THIS DRAWING DOES NOT REPRESENT A BOUNDARY SURVEY. DISTANCES, COORDINATES AND BEARINGS SHOWN ARE NOT INTENDED TO BE DEFINITIVE IN ESTABLISHING ACTUAL TITLE BOUNDRIES. THIS DRAWING IS FOR CONSTRUCTION PURPOSES ONLY.

All Bearings, Distances, and Coordinates shown hereon are based on the Kansas State Plane Coordinate System, N.A.D. 27 Datum, South Zone.



FINAL COPY

PROPOSED WELL LOCATION
ENCANA OIL & GAS (USA) INC.
NATTIER 16H-2
HARVEY COUNTY, KANSAS
SCALE: 1" = 1000'