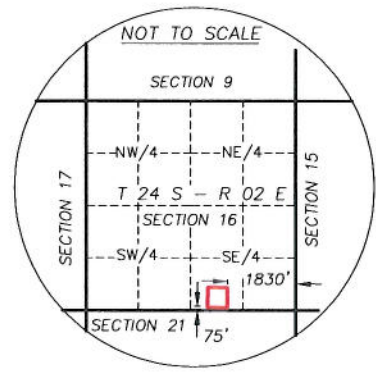
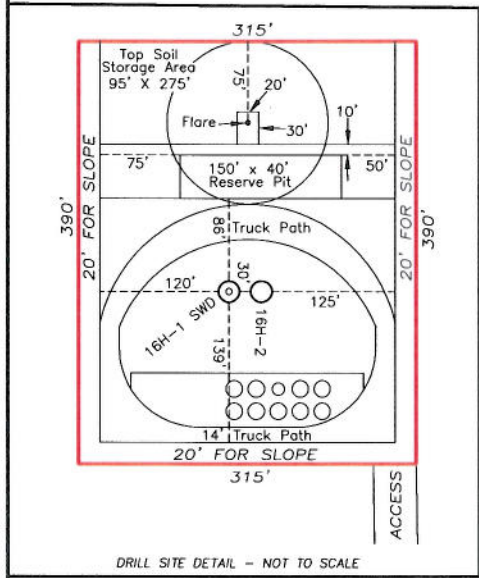
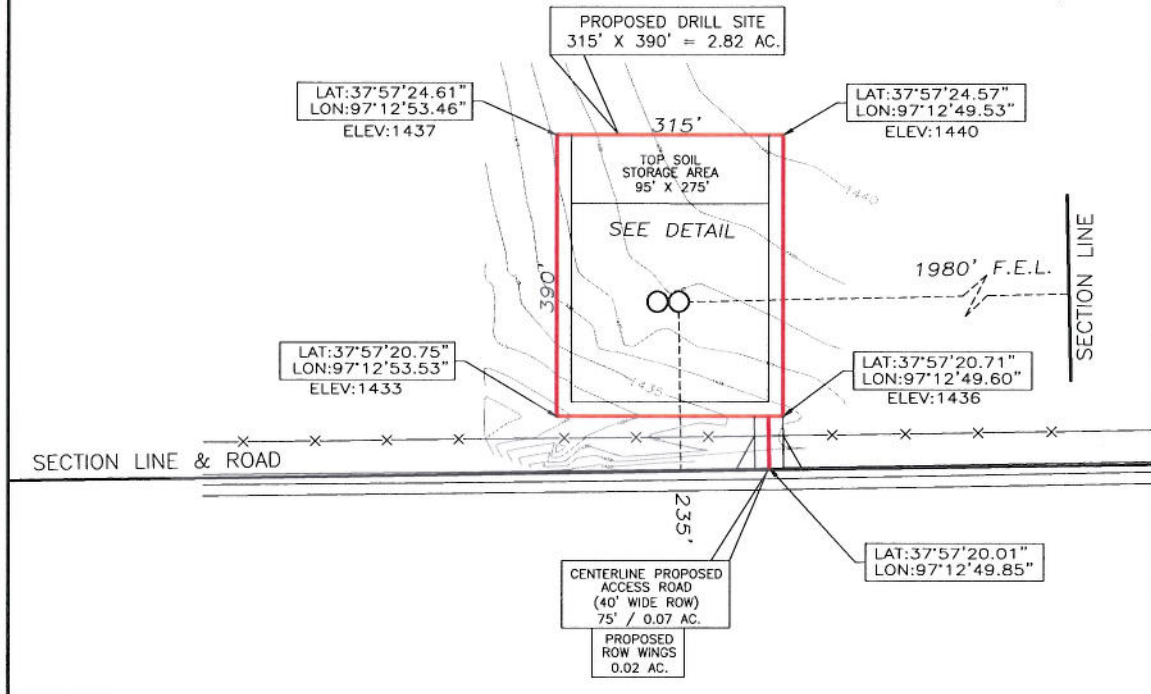


# T 24 S - R 02 E

## SECTION 16

SW/4 OF SE/4

SURFACE OWNER  
SIDNEY A NATTIER



**FINAL COPY**

**CONSTRUCTION PLAT  
SHOWING PROPOSED  
DRILL SITE AND ACCESS ROAD  
ENCANA OIL & GAS (USA) INC.  
SECTION 16, 24S-02E, SWSE  
HARVEY COUNTY, KANSAS  
SCALE: 1" = 200'**

ROW WINGS = 0.02 AC.
ACCESS ROAD = 0.07 AC.
DRILL SITE = 2.82 AC.
<b>TOTAL = 2.91 AC.</b>

REV: 7-4-2012  
7-2-2012  
T120481-CON