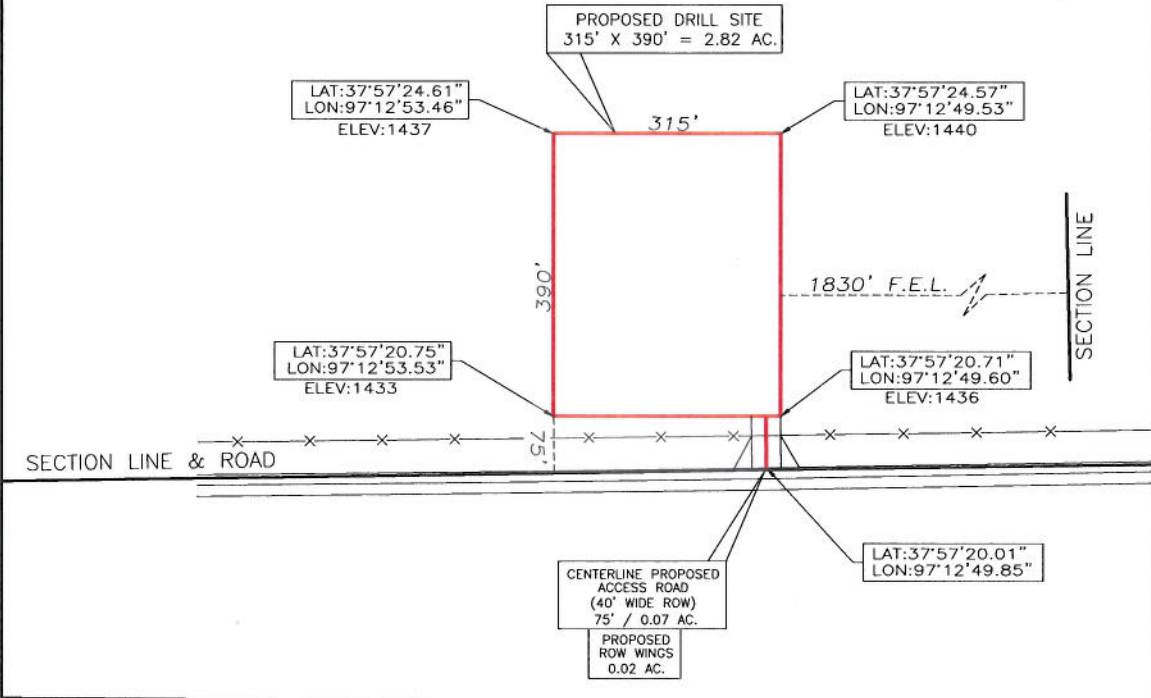


T 24 S - R 02 E

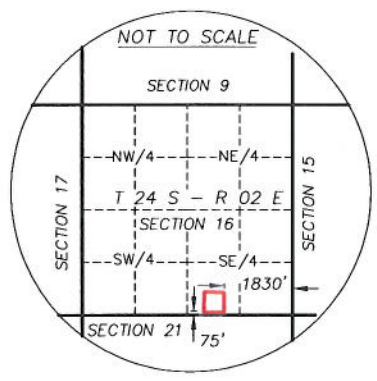
SECTION 16

SW/4 OF SE/4

SURFACE OWNER
SIDNEY A NATTIER



FINAL COPY



**LAND USE PLAT
SHOWING PROPOSED
DRILL SITE AND ACCESS ROAD
ENCANA OIL & GAS (USA) INC.
SECTION 16, 24S-02E, SWSE
HARVEY COUNTY, KANSAS
SCALE: 1" = 200'**

ROW WINGS = 0.02 AC.
ACCESS ROAD = 0.07 AC.
DRILL SITE = 2.82 AC.
TOTAL = 2.91 AC.

REV: 7-4-2012
7-2-2012
T120481-LU