



## DRILL STEM TEST REPORT

Prepared For: **Siroky Oil Management**

PO Box 464  
Pratt KS 67124

ATTN: Brian Siroky

### **Kovach #1**

#### **20-27s-12w Pratt,KS**

Start Date: 2012.05.14 @ 00:06:17

End Date: 2012.05.14 @ 09:52:47

Job Ticket #: 44792                      DST #: 1

Trilobite Testing, Inc  
PO Box 362 Hays, KS 67601  
ph: 785-625-4778 fax: 785-625-5620

Printed: 2012.05.24 @ 15:34:52



**TRILOBITE TESTING, INC.**

# DRILL STEM TEST REPORT

Siroky Oil Management

**20-27s-12w Pratt,KS**

PO Box 464  
Pratt KS 67124

**Kovach #1**

Job Ticket: 44792

**DST#: 1**

ATTN: Brian Siroky

Test Start: 2012.05.14 @ 00:06:17

## GENERAL INFORMATION:

Formation: **Swope**

Deviated: No Whipstock: ft (KB)

Time Tool Opened: 05:32:17

Time Test Ended: 09:52:47

Test Type: Conventional Bottom Hole (Initial)

Tester: Jeff Brown

Unit No: 44

**Interval: 3944.00 ft (KB) To 3974.00 ft (KB) (TVD)**

Reference Elevations: 1836.00 ft (KB)

Total Depth: 3974.00 ft (KB) (TVD)

1814.00 ft (CF)

Hole Diameter: 7.88 inches Hole Condition: Good

KB to GR/CF: 22.00 ft

**Serial #: 8321**

**Inside**

Press @ Run Depth: 47.25 psig @ 3946.00 ft (KB)

Capacity: 8000.00 psig

Start Date: 2012.05.14

End Date:

2012.05.14

Last Calib.:

2012.05.14

Start Time: 00:06:18

End Time:

09:51:47

Time On Btm:

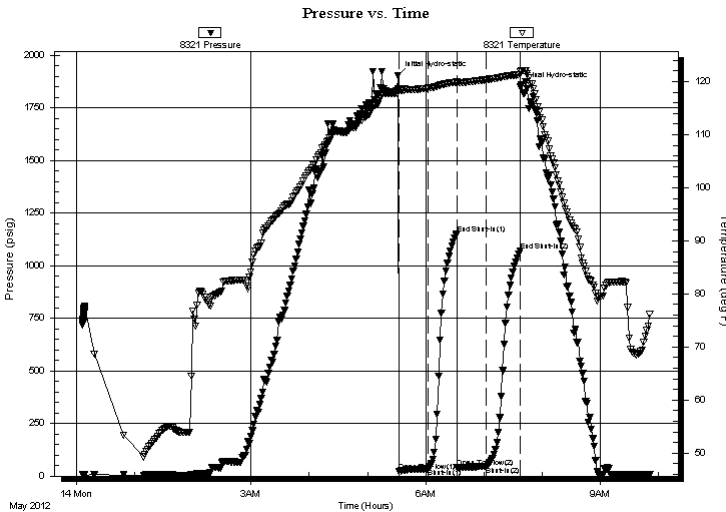
2012.05.14 @ 05:31:47

Time Off Btm:

2012.05.14 @ 07:37:47

**TEST COMMENT:** IFP-Weak blow built to 1 1/4 in  
ISI-Dead no blow back  
FFP-Weak blow built to 1/4 in  
FSI-Dead no blow back

## PRESSURE SUMMARY



Time (Min.)	Pressure (psig)	Temp (deg F)	Annotation
0	1904.68	118.60	Initial Hydro-static
1	23.79	118.28	Open To Flow (1)
31	35.50	118.77	Shut-In(1)
60	1153.40	119.91	End Shut-In(1)
61	40.11	119.87	Open To Flow (2)
91	47.25	120.38	Shut-In(2)
126	1070.57	121.32	End Shut-In(2)
126	1850.13	121.81	Final Hydro-static

## Recovery

Length (ft)	Description	Volume (bbl)
15.00	WM with oil spots	0.07

## Gas Rates

Choke (inches)	Pressure (psig)	Gas Rate (Mcf/d)



**TRILOBITE TESTING, INC.**

# DRILL STEM TEST REPORT

Siroky Oil Management

**20-27s-12w Pratt,KS**

PO Box 464  
Pratt KS 67124

**Kovach #1**

Job Ticket: 44792

**DST#: 1**

ATTN: Brian Siroky

Test Start: 2012.05.14 @ 00:06:17

## GENERAL INFORMATION:

Formation: **Swope**

Deviated: No Whipstock: ft (KB)

Time Tool Opened: 05:32:17

Time Test Ended: 09:52:47

Test Type: Conventional Bottom Hole (Initial)

Tester: Jeff Brown

Unit No: 44

**Interval: 3944.00 ft (KB) To 3974.00 ft (KB) (TVD)**

Reference Elevations: 1836.00 ft (KB)

Total Depth: 3974.00 ft (KB) (TVD)

1814.00 ft (CF)

Hole Diameter: 7.88 inches Hole Condition: Good

KB to GR/CF: 22.00 ft

**Serial #: 8737 Outside**

Press @ Run Depth: psig @ 3946.00 ft (KB)

Capacity: 8000.00 psig

Start Date: 2012.05.14

End Date:

2012.05.14

Last Calib.:

2012.05.14

Start Time: 00:06:33

End Time:

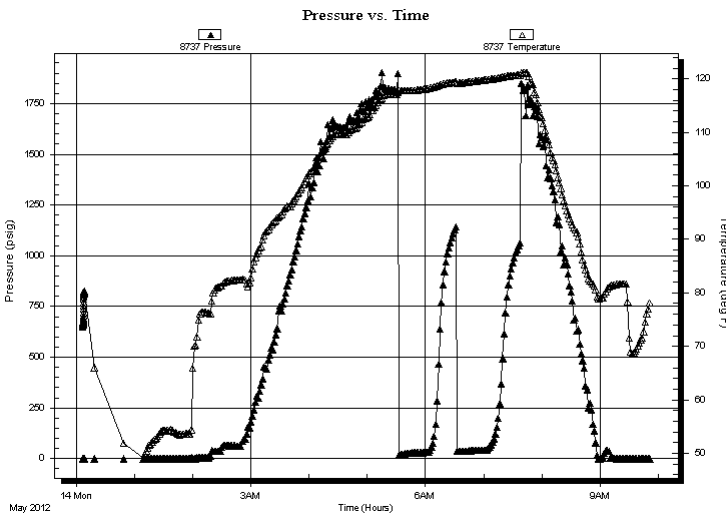
09:52:02

Time On Btm:

Time Off Btm:

**TEST COMMENT:** IFP-Weak blow built to 1 1/4 in  
ISI-Dead no blow back  
FFP-Weak blow built to 1/4 in  
FSI-Dead no blow back

## PRESSURE SUMMARY



Time (Min.)	Pressure (psig)	Temp (deg F)	Annotation

## Recovery

Length (ft)	Description	Volume (bbl)
15.00	WM with oil spots	0.07

## Gas Rates

Choke (inches)	Pressure (psig)	Gas Rate (Mcf/d)



**TRILOBITE  
TESTING, INC.**

# DRILL STEM TEST REPORT

**TOOL DIAGRAM**

Siroky Oil Management

**20-27s-12w Pratt,KS**

PO Box 464  
Pratt KS 67124

**Kovach #1**

Job Ticket: 44792

**DST#: 1**

ATTN: Brian Siroky

Test Start: 2012.05.14 @ 00:06:17

## Tool Information

Drill Pipe:	Length: 3772.00 ft	Diameter: 3.80 inches	Volume: 52.91 bbl	Tool Weight: 2200.00 lb
Heavy Wt. Pipe:	Length: 0.00 ft	Diameter: 2.70 inches	Volume: 0.00 bbl	Weight set on Packer: 22000.00 lb
Drill Collar:	Length: 154.00 ft	Diameter: 2.25 inches	Volume: 0.76 bbl	Weight to Pull Loose: 95000.00 lb
			<u>Total Volume: 53.67 bbl</u>	Tool Chased 0.00 ft
Drill Pipe Above KB:	10.00 ft			String Weight: Initial 77000.00 lb
Depth to Top Packer:	3944.00 ft			Final 78000.00 lb
Depth to Bottom Packer:	ft			
Interval between Packers:	30.00 ft			
Tool Length:	58.00 ft			
Number of Packers:	2	Diameter: 6.75 inches		

Tool Comments:

Tool Description	Length (ft)	Serial No.	Position	Depth (ft)	Accum. Lengths
------------------	-------------	------------	----------	------------	----------------

Change Over Sub	1.00			3917.00	
Shut In Tool	5.00			3922.00	
Hydraulic tool	5.00			3927.00	
Jars	5.00			3932.00	
Safety Joint	3.00			3935.00	
Packer	4.00			3939.00	28.00 Bottom Of Top Packer
Packer	5.00			3944.00	
Stubb	1.00			3945.00	
Perforations	1.00			3946.00	
Recorder	0.00	8321	Inside	3946.00	
Recorder	0.00	8737	Outside	3946.00	
Perforations	25.00			3971.00	
Bullnose	3.00			3974.00	30.00 Bottom Packers & Anchor

**Total Tool Length: 58.00**



**TRILOBITE  
TESTING, INC.**

# DRILL STEM TEST REPORT

**FLUID SUMMARY**

Siroky Oil Management

**20-27s-12w Pratt,KS**

PO Box 464  
Pratt KS 67124

**Kovach #1**

Job Ticket: 44792

**DST#: 1**

ATTN: Brian Siroky

Test Start: 2012.05.14 @ 00:06:17

## Mud and Cushion Information

Mud Type: Gel Chem

Cushion Type:

Oil API:

deg API

Mud Weight: 9.00 lb/gal

Cushion Length:

ft

Water Salinity:

ppm

Viscosity: 43.00 sec/qt

Cushion Volume:

bbbl

Water Loss: 8.99 in<sup>3</sup>

Gas Cushion Type:

Resistivity: ohm.m

Gas Cushion Pressure:

psig

Salinity: 1500.00 ppm

Filter Cake: inches

## Recovery Information

Recovery Table

Length ft	Description	Volume bbl
15.00	WM with oil spots	0.074

Total Length: 15.00 ft      Total Volume: 0.074 bbl

Num Fluid Samples: 0

Num Gas Bombs: 0

Serial #:

Laboratory Name:

Laboratory Location:

Recovery Comments:

Serial #: 8321

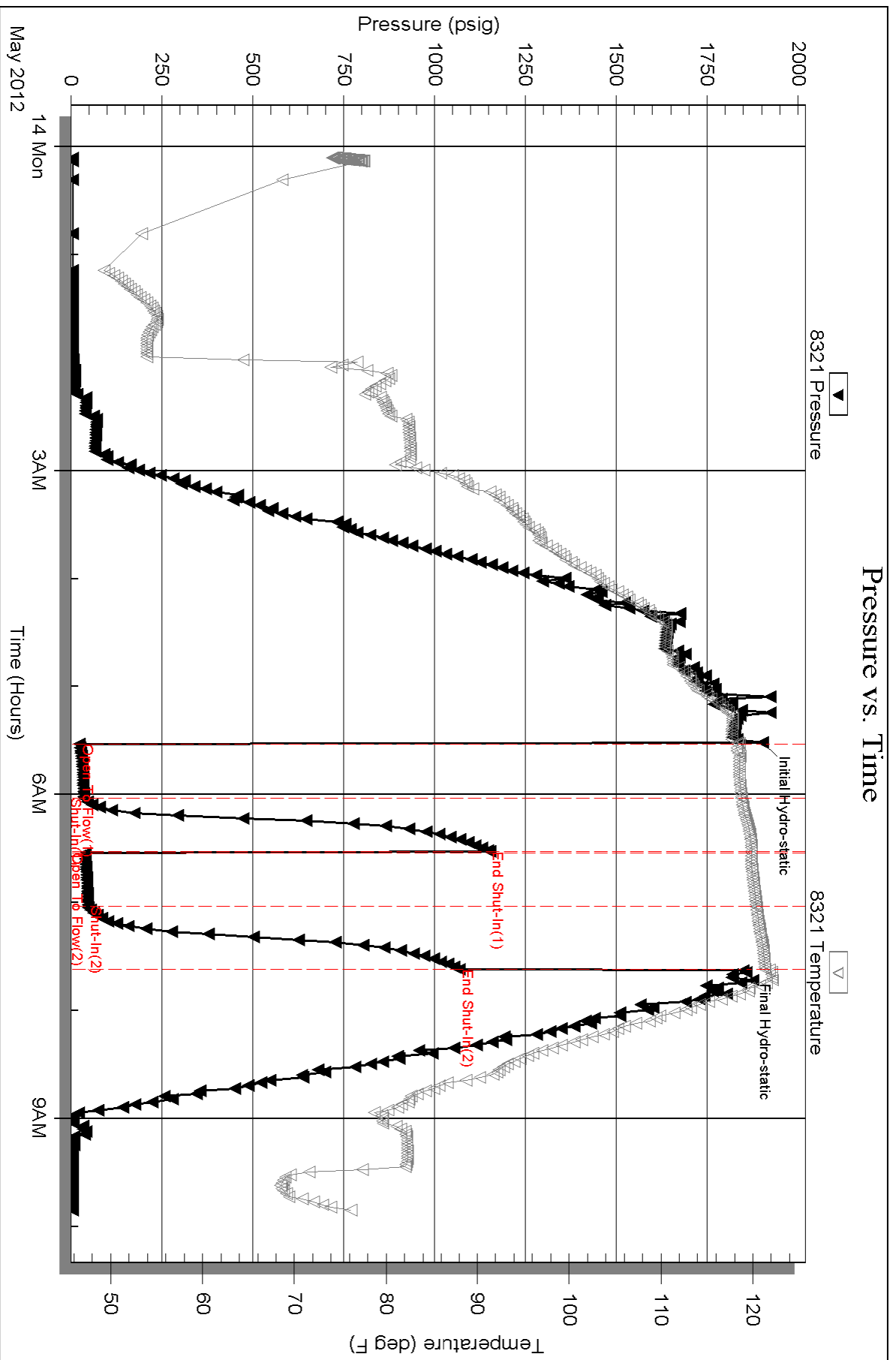
Inside

Sirky Oil Management

Kovach #1

DST Test Number: 1

### Pressure vs. Time

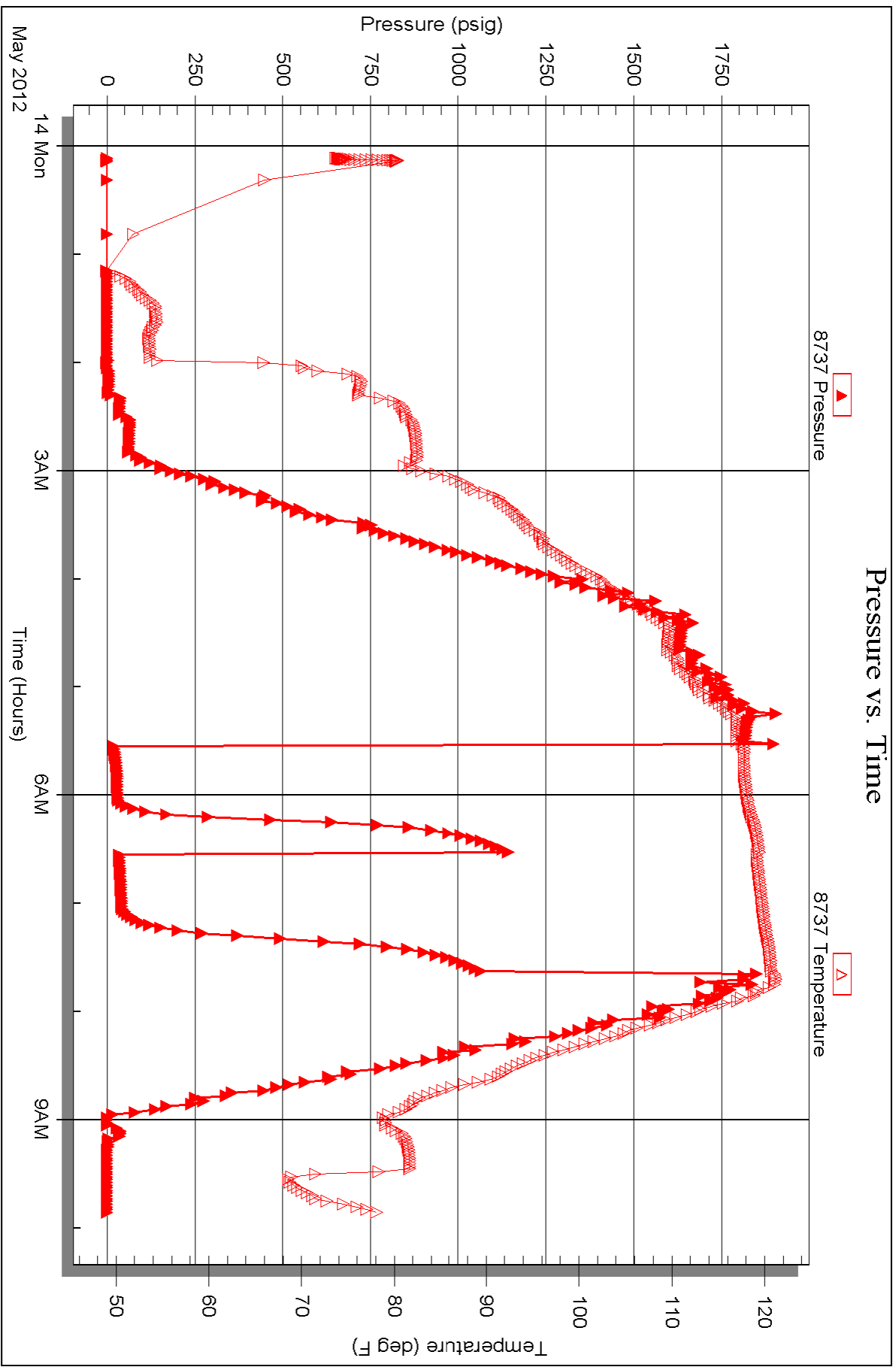


Serial #: 8737

Outside Siroky Oil Management

Kovach #1

DST Test Number: 1





# TRILOBITE TESTING INC.

P.O. Box 1733 • Hays, Kansas 67601

## Test Ticket

NO. 44792

Well Name & No. Kovach #1 Test No. 1 Date 5-13-12  
 Company Sifoky Oil Management Elevation 1826 KB 1814 GL  
 Address PO Box 464 Pratt KS 67124 + 0464  
 Co. Rep / Geo. SAMAN SHARIF AIE Rig Fossil Drilling Rig #3  
 Location: Sec. 20 Twp. 27S Rge. 12W Co. PRATT State KS

Interval Tested 3944-3974 Zone Tested Swope  
 Anchor Length 30 Drill Pipe Run 3772 Mud Wt. 8.9  
 Top Packer Depth 3939 Drill Collars Run 154 Vis 43  
 Bottom Packer Depth 3944 Wt. Pipe Run 0 WL 9.0  
 Total Depth 3974 Chlorides 1500 ppm System LCM 2

Blow Description ff-Weak Blow Built to 1 1/4 IN  
ff-Dead No Blow Back  
ff-Weak Blow Built to 1/4 IN  
ff-Dead No Blow Back

Rec	Feet of	%gas	%oil	%water	%mud
<u>15</u>	<u>WM with oil spots</u>			<u>5%</u>	<u>95%</u>
Rec	Feet of	%gas	%oil	%water	%mud
Rec	Feet of	%gas	%oil	%water	%mud
Rec	Feet of	%gas	%oil	%water	%mud
Rec	Feet of	%gas	%oil	%water	%mud

Rec Total 15 BHT 121 Gravity \_\_\_\_\_ API RW \_\_\_\_\_ @ \_\_\_\_\_ °F Chlorides \_\_\_\_\_ ppm

(A) Initial Hydrostatic <u>1905</u>	<input checked="" type="checkbox"/> Test 1150	T-On Location <u>21:44</u>
(B) First Initial Flow <u>24</u>	<input checked="" type="checkbox"/> Jars 250	T-Started <u>00:06</u>
(C) First Final Flow <u>36</u>	<input checked="" type="checkbox"/> Safety Joint 75	T-Open <u>5:33</u>
(D) Initial Shut-In <u>1153</u>	<input type="checkbox"/> Circ Sub	T-Pulled <u>7:33</u>
(E) Second Initial Flow <u>40</u>	<input type="checkbox"/> Hourly Standby	T-Out <u>9:52</u>
(F) Second Final Flow <u>47</u>	<input checked="" type="checkbox"/> Mileage 14 rt 21.70	Comments _____
(G) Final Shut-In <u>1071</u>	<input type="checkbox"/> Sampler	
(H) Final Hydrostatic <u>1850</u>	<input type="checkbox"/> Straddle	<input type="checkbox"/> Ruined Shale Packer
	<input type="checkbox"/> Shale Packer	<input type="checkbox"/> Ruined Packer
Initial Open <u>30</u>	<input type="checkbox"/> Extra Packer	<input type="checkbox"/> Extra Copies
Initial Shut-In <u>30</u>	<input type="checkbox"/> Extra Recorder	Sub Total <u>0</u>
Final Flow <u>30</u>	<input type="checkbox"/> Day Standby	Total <u>1496.70</u>
Final Shut-In <u>30</u>	<input type="checkbox"/> Accessibility	MP/DST Disc't _____
	Sub Total <u>1496.70</u>	

Approved By \_\_\_\_\_ Our Representative Jeff Brown

Trilobite Testing Inc. shall not be liable for damaged of any kind of the property or personnel of the one for whom a test is made, or for any loss suffered or sustained, directly or indirectly, through the use of its equipment, or its statements or opinion concerning the results of any test, tools lost or damaged in the hole shall be paid for at cost by the party for whom the test is made.