

Sean Deenihan

Petroleum Geologist

15-151-22390

15-151-22390

GEOLOGIST'S REPORT DRILLING TIME AND SAMPLE LOG

COMPANY Siroky Oil Management, Inc.

LEASE Kovach #1

FIELD Iuka-Carmi East

LOCATION 660' FSL & 2310' FEL

SEC 20 TWSP 27S RGE 12W

COUNTY Pratt STATE Kansas

CONTRACTOR Fossil Drilling-Rig #3

SPUD /1/2011 COMP 10/11/2011

RTD 4458' LTD 4457'

MUD UP 3400' TYPE MUD Chemical

SAMPLES SAVED FROM 3800' TO RTD

DRILLING TIME KEPT FROM 3500' TO RTD

SAMPLES EXAMINED FROM 3800' TO RTD

GEOLOGICAL SUPERVISION FROM 3700'

REFERENCE WELL KRM - Bailey #1

ELEVATIONS

KB 1826'

DF _____

GL 1814'

Measurements Are All
From Kelly Bushing

CASING

CONDUCTOR _____

SURFACE 8 5/8" @ 239'

PRODUCTION 5 1/2" 15.5#

ELECTRICAL SURVEYS

CND, DIL,

MICRO

Superior

Struct
Pos.

Sample Tops

E-log Tops

Heebner Sh. 3502 (-1676) 3504 (-1678)

Lansing 3703 (-1877) 3706 (-1880)

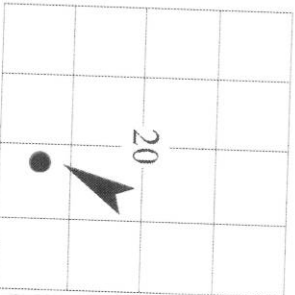
BKC 4058 (-2232) 4057 (-2231)

Marmaton 4108 (-2282) 4104 (-2278)

Miss 4152 (-2326) 4156 (-2230)

Simpson Sd 4402 (-2576) 4398 (-2572)

Arbuckle 4494 (-2768)



REMARKS The Kovach #1 will be evaluated further through 5.5" production casing.

15-151-22390

Respectfully Submitted,

Sean Deenihan

Engineering Data

TG (Units) _____
C1 (units) _____
C2 (units) _____
C3 (units) _____
C4 (units) _____
C5 (units) _____

Geological Descriptions

Heebner Sh. 3502 (-1676)

Sh., blk, carb, gas bubble

Sh., gy

Ls., wh, chlky, fri, n/s

Sh., gy, fis

Sh., gy, v silty, blk str

Lithology

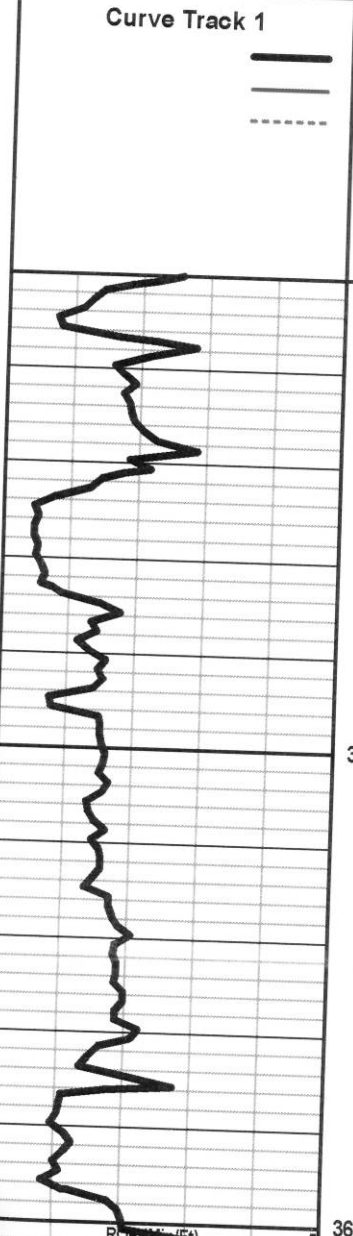
Depth

3500

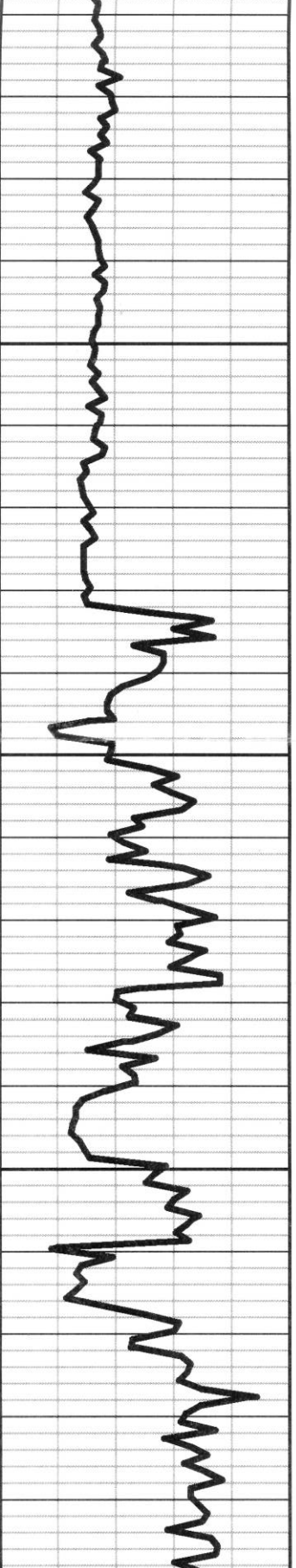
3550

3600

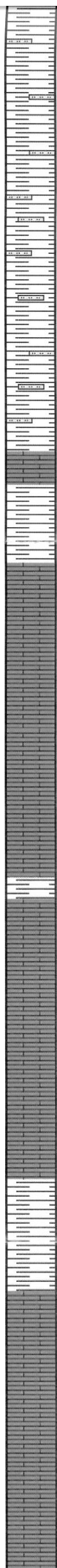
Curve Track 1



1 Gamma (API) 150
6 Caliper (inches) 16



0 ROP (Min/ft) 5
1 Gamma (API) 150
6 Caliper (inches) 16



Sh., gy, silty, sbrd, well srted, n/s

3650

Sh., gy, lt gy, n/s

Brown Lime 3682 (-1857)

Ls., brn, hd, n/s

3700

Lansing 3703 (-1877)

Ls., crm, vf gr, p intgran Por firm, n/s

Ls., wh, sing, vf gr, p intgran Por, n/s

Ls., crm, vf gr, sli chlky, rr fos frag, p intgran Por, n/s

3750

Ls., crm, tn, f gr, Pyr, dnse, firm, n/s

Dol., tn, f xln, fr intxdn por, vug, barren, no odr, no fluor

Ls., crm, sdy IP, vf gr, p intgran Por, firm, n/s

3800

Ls., crm, wh, chlky, p intgran Por, firm n/s

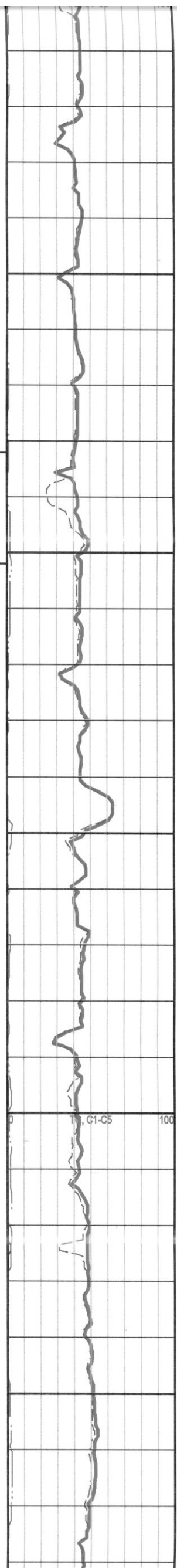
Sh., gy- dk gy, carb, soft

Ls., crm, gy, f gr, sme chlky, vug, soft, n/s

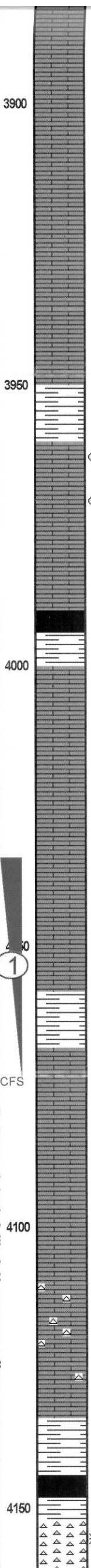
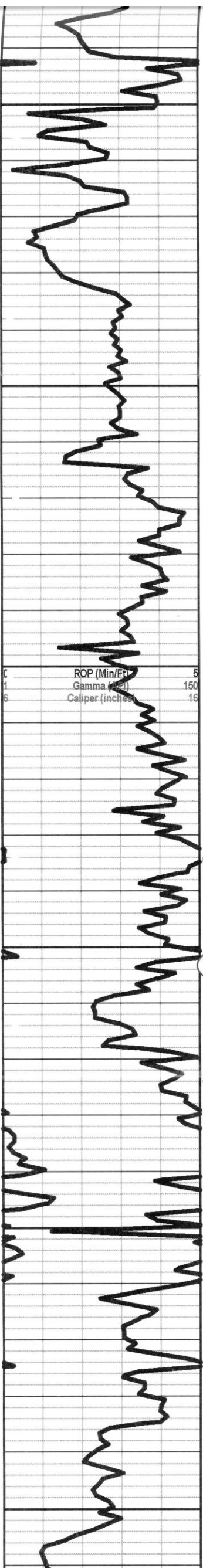
3850

Ls., wh, crm, vf gr, v chlky, fri, n/s

Ls., crm, gy, vf gr, fos frag, p intgran Por, firm, n/s



G1-C5 100



3900 Ls., crm, tn, md gr, Fos, dnse, p intgran Por, firm, sli cherty, subchiky, n/s

Ls., wh, crm, cong IP, v chiky, n/s

Ls., tn, Ool, NVP, dnse, hd

Ls., wh, Ool., fr Oom Por, sli chiky, soft, n/s

Ls., crm, xf gr, NVP, re-xtl Fos, v hd, n/s

3950 Sh., gy-dk gy, fis

Ls., tn, vf gr fr intgran Por, vuggy, FSFO, ft odr

Ls. crm, wh, vf gr, fr intgran Por, FSFO-lt brn, ft odr, fluor

Ls., wh, crm, vf gr, fos, p intgran Por, NSFO, sli stn, no odr

SH., blk

4000 Ls., crm, xf gr, NVP, v hd, n/s

Ls., crm, vf gr, p intgran por, hd, n/s

Ls., tan, vf gr, sli chky, pr intgran por, pr SFO, gn/gld fluor

Ls., clr, xf gr, vuggy, pr show lt brn O, ft odr, fluor

①

4100 Ls., gy, vf gr, hd, n/s

Ls., crm/gry, dnse, rr stn, NSFO, no odr

Ls., wh, crm, xf gr, v hd, sli cherty, n/s

Sh., dk rd, brn, blk, gy, sme mottled

Sh., blk

4150 Cht., wh, clr, fos, gas bubble, sli stn, FSFO, gd odr, gd fluor

BKC 4058 (-2232)

Mississippi 4152 (-2326)

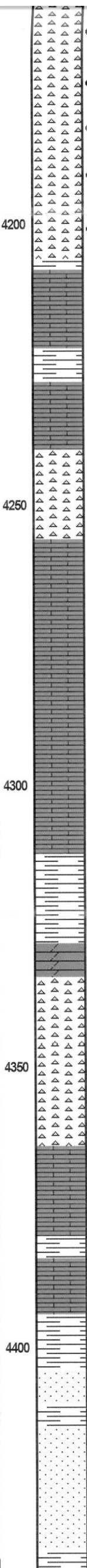
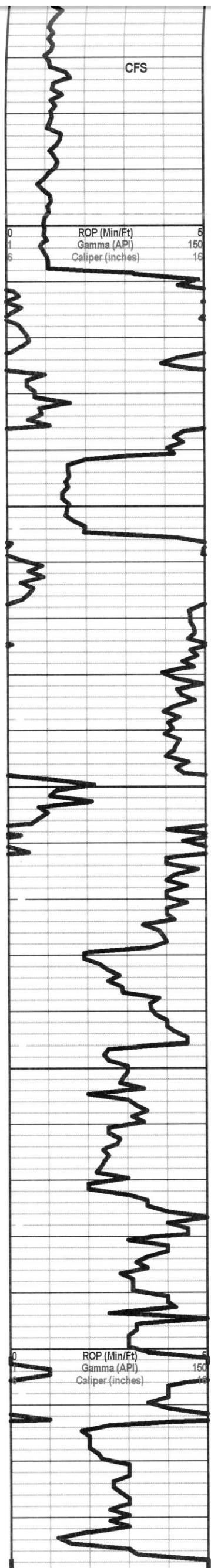
Mud Check
@ 3950'
9.2 Wt
49 Vis
3# LCM
6K Chl

DST # 1
3944-3974'
30-30-30-30"

IF: BOB 1.25"
FF: .25"

REC: 15' WM
w/ O spots

IFP: 24-36#
FFP: 40-47#
SIP: 1153-1071#
HP: 1904-1850#



Cht., clr/wh/brn, fr frac por, gils, brec, pyr, ang, dd O stnd, gd gn fluor, gd O bleed, gd G odr, rr G bubbles, SFO

Cht., wh, clr, vug, weath, GSFO-lt brn, bright fluor, strong odr

Cht., wh, clr, sli weath, fr p.p. vug Por, sme Oil bleed, brn-blk stn, fr odr, gd fluor

Cht., clr, wh, vug, fr O stn, frac, FSFO - lt brn, fr odr, fluor

Cht., wh, abd fos, vuggy, frac, sdy, fr intxn Por, fri, gd stn, PSFO upon crush, no odr

4200

ROP (Min/Ft) 5
Gamma (API) 150
Caliper (inches) 16

4250

4300

4350

4400

ROP (Min/Ft) 5
Gamma (API) 150
Caliper (inches) 16

Sh., crm, fos, vf gr, p intgran Por, v hd, n/s

Sh., gy, brn

Sh., gy, f gr, p intgran Por, hd, scaly, n/s

Cht., wh, clr, sharp, fresh, NVP, hd, n/s

Sh., crm, vf gr, dnse, hd, Pyr, n/s

Sh., crm, tn, gy, xf gr, sing, hd, n/s

Sh., gy

Sh., gry, vf gr, micro xln, blk, sbang, dnse, no fluor, no odr, n/s

Sh., gy, vf gr, dns, p Por, hd, n/s

Sh., lt gy-gy, silty, hd

— Viola 4328 (-2502) —

Cht., varic, hd, sharp, fos, n/s

Cht., wh, clr, gy, sharp, fresh, n/s

Sh., crm, vf gr, P intgran Por, firm, n/s

Sh., crm, vf gr, p intgran Por, fos, Pyr, n/s

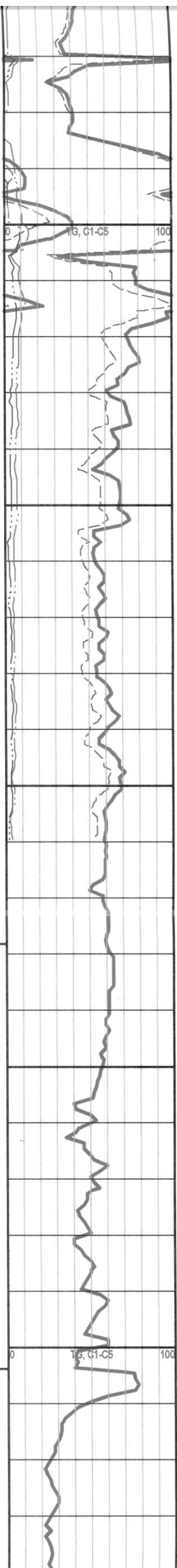
Sh., gy-dk gy

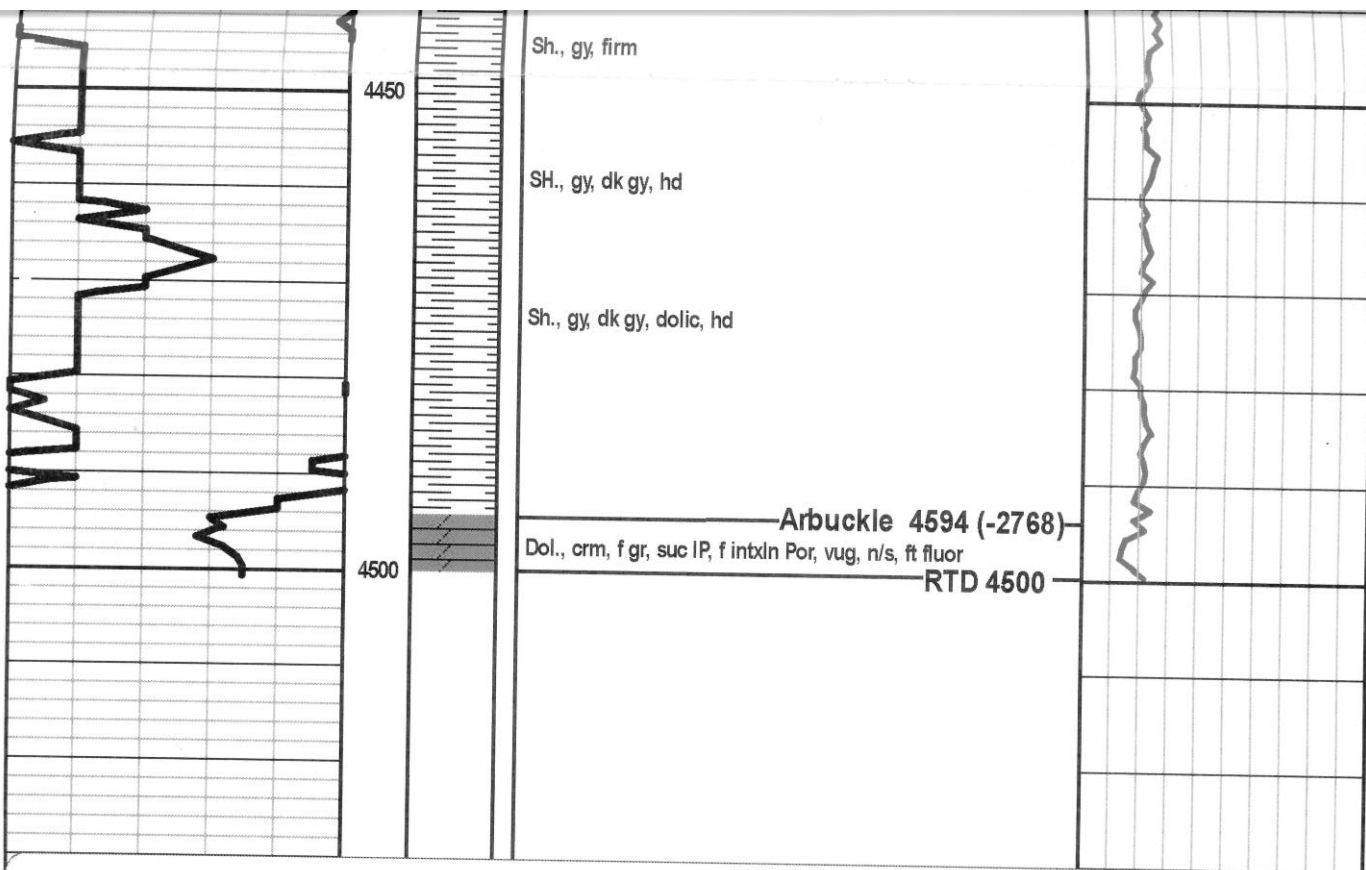
— Simpson Sd 4402 (-2576) —

Ss., clr, vf gr, sbrd, well srted, clean, p intgran Por, firm, FSFO upon crush, rr gas bubble, fluor, ft odr in tray

Ss., vf gr, f gr, p srted, p intgran Por, firm, dirty, abd acc Min, hd, n/s

Ss., f gr, sbang, f intgran Por, barren, n/s





Siroky Oil Management, Inc.
Kovach #1

20-27S-12W

KB: 1826'

15-151-22390