



TRILOBITE TESTING, INC.

DRILL STEM TEST REPORT

Shakespear Oil Co. Inc

25-16s-34w Scott Co. KS

202 West Main St.
Salem IL 62881

Carson # 1-25

Job Ticket: 45889

DST#: 2

ATTN: Tim Priest

Test Start: 2012.05.29 @ 10:36:00

GENERAL INFORMATION:

Formation: **LKC " D - F "**

Deviated: No Whipstock: ft (KB)

Time Tool Opened: 12:06:55

Time Test Ended: 17:16:09

Test Type: Conventional Bottom Hole (Reset)

Tester: Will MacLean

Unit No: 40

Interval: 4115.00 ft (KB) To 4154.00 ft (KB) (TVD)

Reference Elevations: 3112.00 ft (KB)

Total Depth: 4154.00 ft (KB) (TVD)

3104.00 ft (CF)

Hole Diameter: 7.88 inches Hole Condition: Good

KB to GR/CF: 8.00 ft

Serial #: 8652

Inside

Press @ Run Depth: 122.77 psig @ 4118.00 ft (KB)

Capacity: 8000.00 psig

Start Date: 2012.05.29

End Date:

2012.05.29

Last Calib.:

2012.05.29

Start Time: 10:36:00

End Time:

17:16:09

Time On Btm:

2012.05.29 @ 12:06:40

Time Off Btm:

2012.05.29 @ 15:27:39

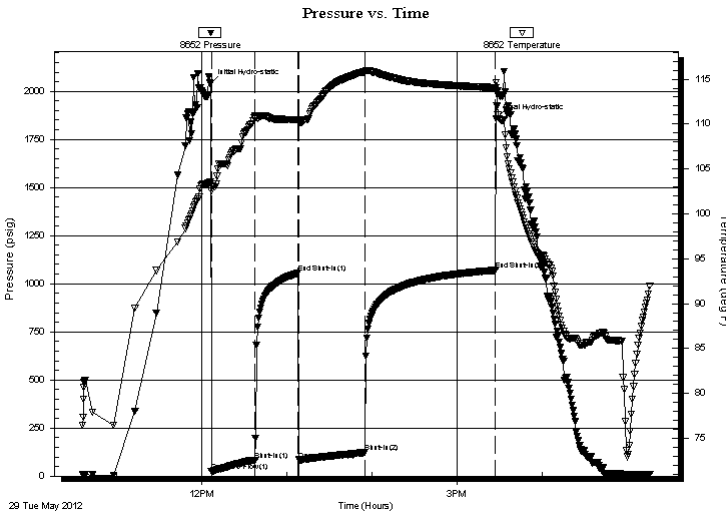
TEST COMMENT: IF- Surface Blow Built to 4"

IS- No Blow

FF- Weak Surface Blow Built to 1 1/2"

FS- No Blow

PRESSURE SUMMARY



Time (Min.)	Pressure (psig)	Temp (deg F)	Annotation
0	2039.54	103.58	Initial Hydro-static
1	24.54	102.60	Open To Flow (1)
31	83.05	110.81	Shut-In(1)
62	1054.54	110.50	End Shut-In(1)
62	84.30	110.25	Open To Flow (2)
109	122.77	115.78	Shut-In(2)
201	1069.82	114.05	End Shut-In(2)
201	1858.19	114.58	Final Hydro-static

Recovery

Length (ft)	Description	Volume (bbl)
61.00	MCW 8%m 92%w	0.30
61.00	MCW 17%m 83%w	0.30
60.00	MCW 35%m 65%w	0.84
40.00	WCM 33%w 67%m	0.56

* Recovery from multiple tests

Gas Rates

Choke (inches)	Pressure (psig)	Gas Rate (Mcf/d)



**TRILOBITE
TESTING, INC.**

DRILL STEM TEST REPORT

FLUID SUMMARY

Shakespear Oil Co. Inc

25-16s-34w Scott Co. KS

202 West Main St.
Salem IL 62881

Carson # 1-25

Job Ticket: 45889

DST#: 2

ATTN: Tim Priest

Test Start: 2012.05.29 @ 10:36:00

Mud and Cushion Information

Mud Type: Gel Chem

Cushion Type:

Oil API:

deg API

Mud Weight: 9.00 lb/gal

Cushion Length:

ft

Water Salinity:

33000 ppm

Viscosity: 57.00 sec/qt

Cushion Volume:

bbbl

Water Loss: 10.39 in³

Gas Cushion Type:

Resistivity: ohm.m

Gas Cushion Pressure:

psig

Salinity: 6500.00 ppm

Filter Cake: 2.00 inches

Recovery Information

Recovery Table

Length ft	Description	Volume bbbl
61.00	MCW 8%m 92%w	0.300
61.00	MCW 17%m 83%w	0.300
60.00	MCW 35%m 65%w	0.842
40.00	WCM 33%w 67%m	0.561

Total Length: 222.00 ft Total Volume: 2.003 bbl

Num Fluid Samples: 0

Num Gas Bombs: 0

Serial #:

Laboratory Name:

Laboratory Location:

Recovery Comments: RW is .155 @ 93f = 33000

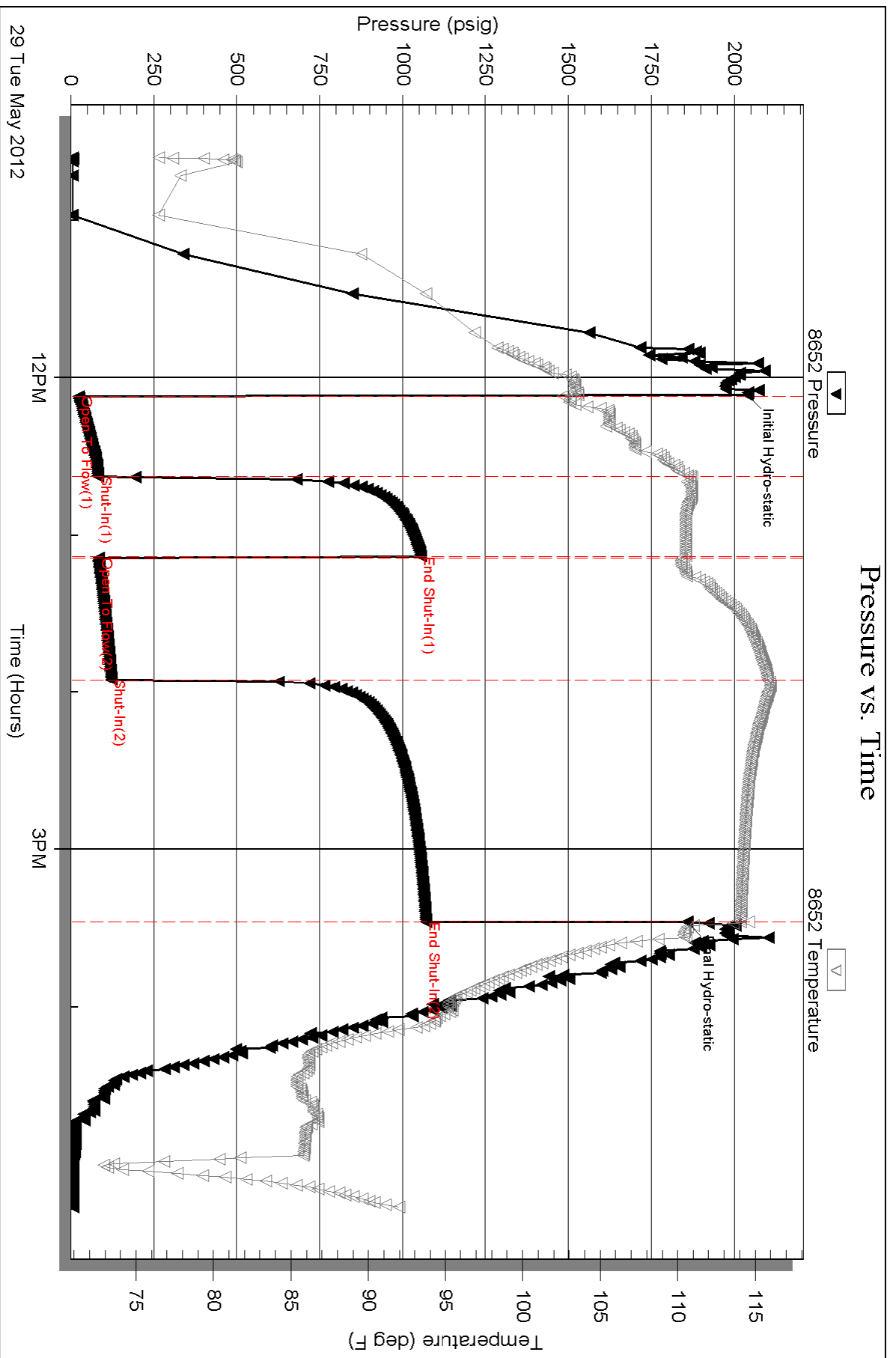
Serial #: 8652

Inside

Shakespeare Oil Co. Inc

Carson # 1-25

DST Test Number: 2



Serial #: 8322

Outside Shakespeare Oil Co. Inc

Carson #1-25

DST Test Number: 2

