



**TRILOBITE TESTING, INC.**

# DRILL STEM TEST REPORT

Shakespeare Oil Co. Inc  
 202 West Main St.  
 Salem IL 62881  
 ATTN: Tim Priest

**25-16s-34w Scott Co. KS**  
**Carson # 1-25**  
 Job Ticket: 45892 **DST#: 5**  
 Test Start: 2012.06.01 @ 02:14:00

## GENERAL INFORMATION:

Formation: **Marmation**  
 Deviated: No Whipstock: ft (KB)  
 Time Tool Opened: 04:12:10  
 Time Test Ended: 09:48:09  
 Interval: **4453.00 ft (KB) To 4480.00 ft (KB) (TVD)**  
 Total Depth: 4480.00 ft (KB) (TVD)  
 Hole Diameter: 7.88 inches Hole Condition: Good  
 Test Type: Conventional Bottom Hole (Reset)  
 Tester: Will MacLean  
 Unit No: 40  
 Reference Elevations: 3112.00 ft (KB)  
 3104.00 ft (CF)  
 KB to GR/CF: 8.00 ft

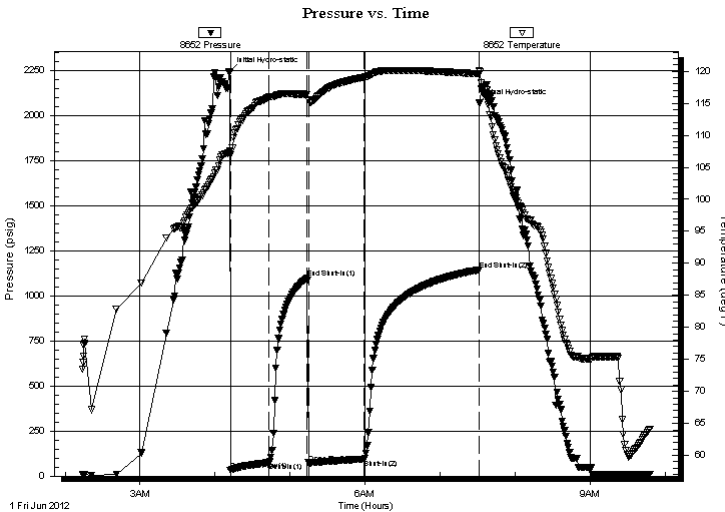
## Serial #: 8652

Inside

Press @ Run Depth: 94.88 psig @ 4454.00 ft (KB) Capacity: 8000.00 psig  
 Start Date: 2012.06.01 End Date: 2012.06.01 Last Calib.: 2012.06.01  
 Start Time: 02:14:00 End Time: 09:48:09 Time On Btm: 2012.06.01 @ 04:11:40  
 Time Off Btm: 2012.06.01 @ 07:31:24

TEST COMMENT: IF- Surface Blow Built to 7 1/4"  
 IS- Weak Surface Blow in 18min  
 FF- Surface Blow Built to BOB in 28min  
 FS- Weak Surface Blow in 12 1/4min Built to 1"

## PRESSURE SUMMARY



Time (Min.)	Pressure (psig)	Temp (deg F)	Annotation
0	2241.94	107.54	Initial Hydro-static
1	30.89	106.93	Open To Flow (1)
32	75.02	115.97	Shut-In(1)
62	1098.00	116.38	End Shut-In(1)
64	73.07	115.37	Open To Flow (2)
108	94.88	119.05	Shut-In(2)
200	1144.88	119.59	End Shut-In(2)
200	2068.53	120.03	Final Hydro-static

## Recovery

Length (ft)	Description	Volume (bbl)
61.00	WOGCM 4%w 18%oil 20%g 58%m	0.30
41.00	WOGCM 2%w 4%g 44%oil 50%m	0.20
80.00	GO 22%g 78%oil	0.94
0.00	300' of GIP	0.00

\* Recovery from multiple tests

## Gas Rates

	Choke (inches)	Pressure (psig)	Gas Rate (Mcf/d)



**TRILOBITE  
TESTING, INC.**

# DRILL STEM TEST REPORT

**FLUID SUMMARY**

Shakespeare Oil Co. Inc

**25-16s-34w Scott Co. KS**

202 West Main St.  
Salem IL 62881

**Carson # 1-25**

Job Ticket: 45892

**DST#: 5**

ATTN: Tim Priest

Test Start: 2012.06.01 @ 02:14:00

## Mud and Cushion Information

Mud Type: Gel Chem

Cushion Type:

Oil API:

36 deg API

Mud Weight: 9.00 lb/gal

Cushion Length:

ft

Water Salinity:

ppm

Viscosity: 53.00 sec/qt

Cushion Volume:

bbbl

Water Loss: 9.54 in<sup>3</sup>

Gas Cushion Type:

Resistivity: ohm.m

Gas Cushion Pressure:

psig

Salinity: 6400.00 ppm

Filter Cake: 2.00 inches

## Recovery Information

Recovery Table

Length ft	Description	Volume bbbl
61.00	WOGCM 4%w 18%oil 20%g 58%m	0.300
41.00	WGOCM 2%w 4%g 44%oil 50%m	0.202
80.00	GO 22%g 78%oil	0.940
0.00	300' of GIP	0.000

Total Length: 182.00 ft      Total Volume: 1.442 bbl

Num Fluid Samples: 0

Num Gas Bombs: 0

Serial #:

Laboratory Name:

Laboratory Location:

Recovery Comments: API is 36 @ 60f = 36

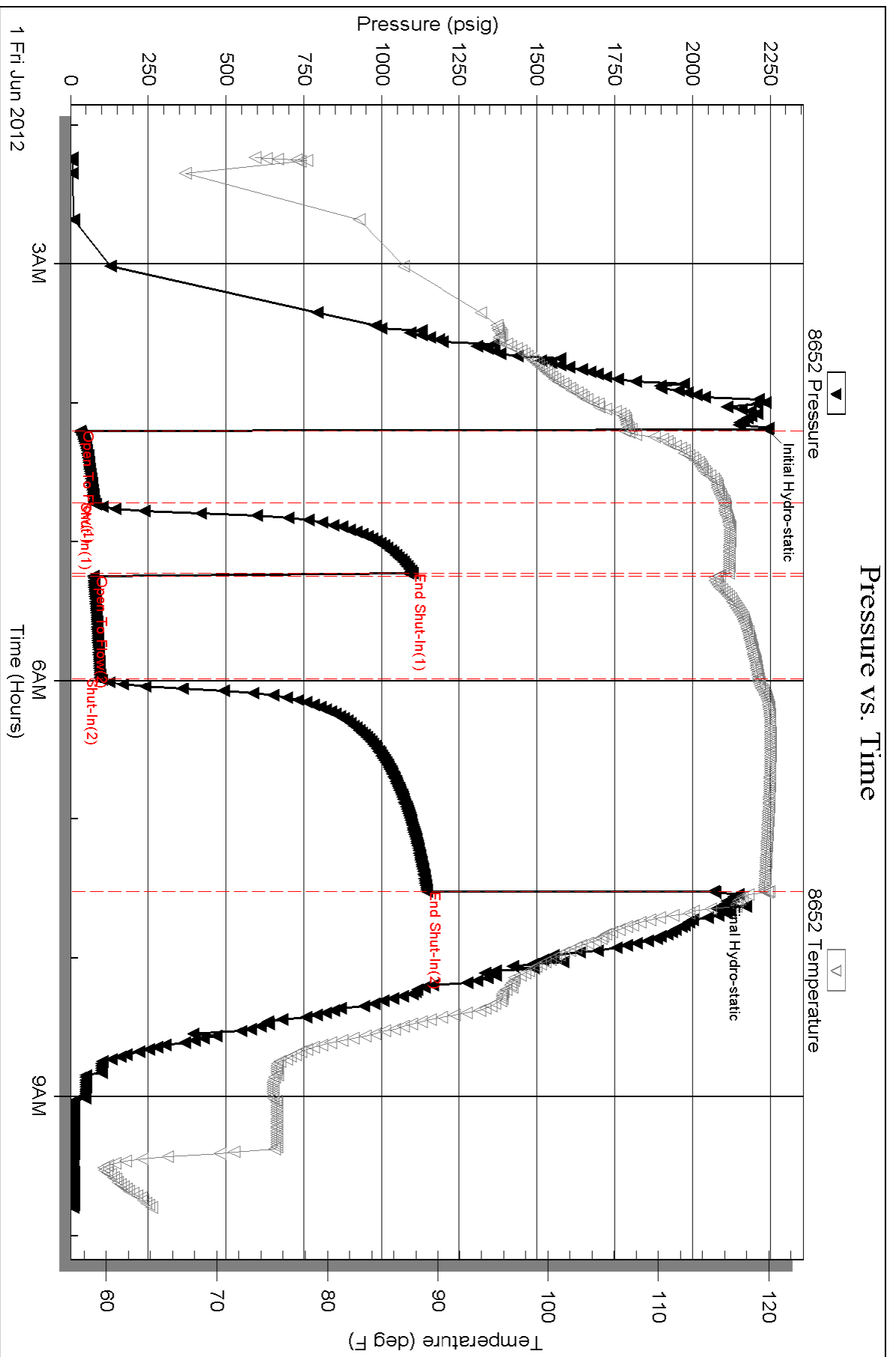
Serial #: 8652

Inside

Shakespeare Oil Co. Inc

Carson # 1-25

DST Test Number: 5



Triobite Testing, Inc

Ref. No: 45892

Printed: 2012.06.01 @ 12:05:16