



**TRILOBITE TESTING, INC.**

# DRILL STEM TEST REPORT

Shakespear Oil Co. Inc

**25-16s-34w Scott Co. KS**

202 West Main St.  
Salem IL 62881

**Carson # 1-25**

Job Ticket: 45893

**DST#: 6**

ATTN: Tim Priest

Test Start: 2012.06.02 @ 06:55:00

## GENERAL INFORMATION:

Formation: **Myric Station / Ft.**

Deviated: No Whipstock: ft (KB)

Time Tool Opened: 09:01:30

Time Test Ended: 14:24:15

Test Type: Conventional Bottom Hole (Reset)

Tester: Will MacLean

Unit No: 40

**Interval: 4565.00 ft (KB) To 4614.00 ft (KB) (TVD)**

Reference Elevations: 3112.00 ft (KB)

Total Depth: 4614.00 ft (KB) (TVD)

3104.00 ft (CF)

Hole Diameter: 7.88 inches Hole Condition: Good

KB to GR/CF: 8.00 ft

**Serial #: 8322 Outside**

Press @ Run Depth: 71.55 psig @ 4566.00 ft (KB)

Capacity: 8000.00 psig

Start Date: 2012.06.02 End Date: 2012.06.02

Last Calib.: 2012.06.02

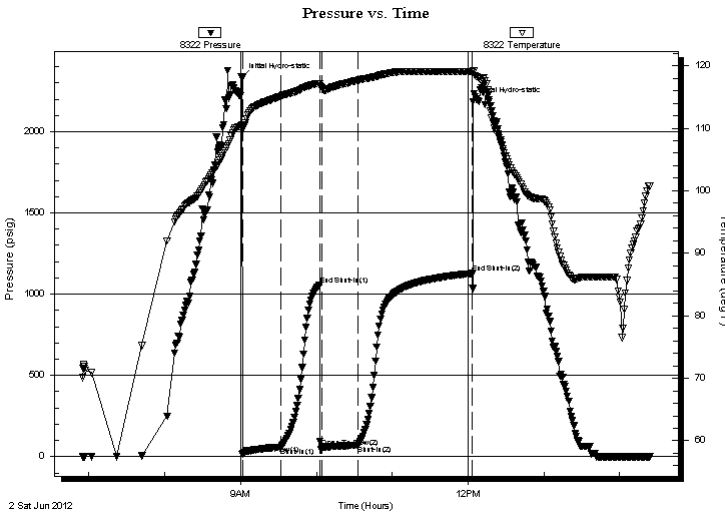
Start Time: 06:55:05 End Time: 14:24:14

Time On Btm: 2012.06.02 @ 09:01:15

Time Off Btm: 2012.06.02 @ 12:04:00

**TEST COMMENT:** IF- Surface Blow Built to BOB in 12min  
IS- No Blow  
FF- Strong Surface Blow Built to BOB in 30sec  
FS- No Blow

## PRESSURE SUMMARY



Time (Min.)	Pressure (psig)	Temp (deg F)	Annotation
0	2330.26	110.49	Initial Hydro-static
1	14.66	109.83	Open To Flow (1)
31	58.91	115.10	Shut-In(1)
62	1057.24	117.15	End Shut-In(1)
63	55.16	116.39	Open To Flow (2)
92	71.55	117.65	Shut-In(2)
183	1128.17	119.02	End Shut-In(2)
183	2187.11	119.24	Final Hydro-static

## Recovery

Length (ft)	Description	Volume (bbl)
61.00	WMOCG 2%w 12%m 23%oil 63%g	0.30
61.00	MOCG 17%m 32%oil 51%g	0.30
40.00	OGCM 8%oil 14%g 78%m	0.56
0.00	860' of GIP	0.00

## Gas Rates

	Choke (inches)	Pressure (psig)	Gas Rate (Mcf/d)

\* Recovery from multiple tests





**TRILOBITE  
TESTING, INC.**

# DRILL STEM TEST REPORT

**FLUID SUMMARY**

Shakespear Oil Co. Inc

**25-16s-34w Scott Co. KS**

202 West Main St.  
Salem IL 62881

**Carson # 1-25**

Job Ticket: 45893

**DST#: 6**

ATTN: Tim Priest

Test Start: 2012.06.02 @ 06:55:00

## Mud and Cushion Information

Mud Type: Gel Chem

Cushion Type:

Oil API:

deg API

Mud Weight: 9.00 lb/gal

Cushion Length:

ft

Water Salinity:

ppm

Viscosity: 56.00 sec/qt

Cushion Volume:

bbbl

Water Loss: 9.78 in<sup>3</sup>

Gas Cushion Type:

Resistivity: ohm.m

Gas Cushion Pressure:

psig

Salinity: 6400.00 ppm

Filter Cake: 1.00 inches

## Recovery Information

Recovery Table

Length ft	Description	Volume bbbl
61.00	WMOCG 2%w 12%m 23%oil 63%g	0.300
61.00	MOCG 17%m 32%oil 51%g	0.300
40.00	OGCM 8%oil 14%g 78%m	0.561
0.00	860' of GIP	0.000

Total Length: 162.00 ft

Total Volume: 1.161 bbl

Num Fluid Samples: 0

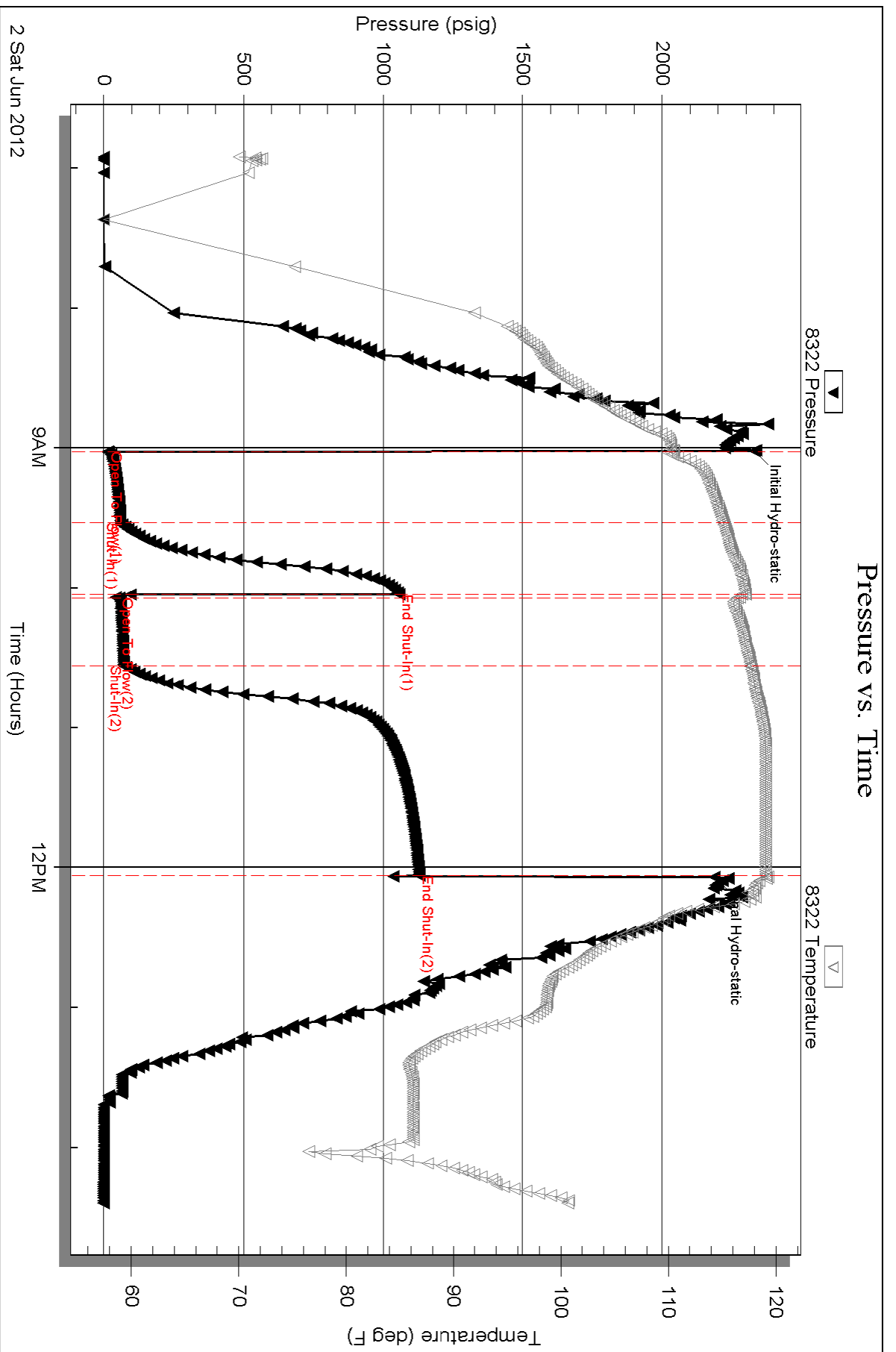
Num Gas Bombs: 0

Serial #:

Laboratory Name:

Laboratory Location:

Recovery Comments:



Serial #: 8652

Inside

Shakespeare Oil Co. Inc

Carson # 1-25

DST Test Number: 6

