



**TRILOBITE  
TESTING, INC.**

# DRILL STEM TEST REPORT

Shakespeare Oil Co. Inc

**25-16s-34w Scott Co. KS**

202 West Main St.  
Salem IL 62881

**Carson # 1-25**

Job Ticket: 45895

**DST#: 8**

ATTN: Tim Priest

Test Start: 2012.06.04 @ 01:40:00

## GENERAL INFORMATION:

Formation: **Johnson**

Deviated: No Whipstock: ft (KB)

Time Tool Opened: 04:44:10

Time Test Ended: 10:10:09

Test Type: Conventional Bottom Hole (Reset)

Tester: Will MacLean

Unit No: 40

**Interval: 4669.00 ft (KB) To 4735.00 ft (KB) (TVD)**

Reference Elevations: 3112.00 ft (KB)

Total Depth: 4735.00 ft (KB) (TVD)

3104.00 ft (CF)

Hole Diameter: 7.88 inches Hole Condition: Good

KB to GR/CF: 8.00 ft

**Serial #: 8652 Inside**

Press @ Run Depth: 57.92 psig @ 4670.00 ft (KB)

Capacity: 8000.00 psig

Start Date: 2012.06.04

End Date:

2012.06.04

Last Calib.:

2012.06.04

Start Time: 01:40:00

End Time:

10:10:09

Time On Btm:

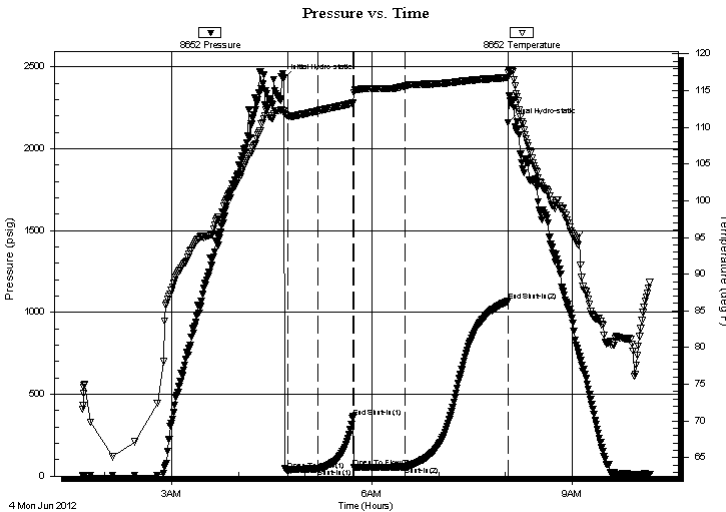
2012.06.04 @ 04:40:55

Time Off Btm:

2012.06.04 @ 08:02:39

**TEST COMMENT:** IF- Weak Surface Blow Built to 1"  
IS- No Blow  
FF- Weak Surface Blow Built to 3/4"  
FS- No Blow

## PRESSURE SUMMARY



Time (Min.)	Pressure (psig)	Temp (deg F)	Annotation
0	2429.91	112.23	Initial Hydro-static
4	37.03	111.59	Open To Flow (1)
31	45.75	112.24	Shut-In(1)
62	362.88	113.30	End Shut-In(1)
63	52.62	114.72	Open To Flow (2)
109	57.92	115.64	Shut-In(2)
202	1068.70	116.78	End Shut-In(2)
202	2160.44	117.44	Final Hydro-static

## Recovery

Length (ft)	Description	Volume (bbl)
61.00	OGCM 8%oil 15%g 77%m	0.30
0.00	61' of GIP	0.00

\* Recovery from multiple tests

## Gas Rates

Choke (inches)	Pressure (psig)	Gas Rate (Mcf/d)



**TRILOBITE  
TESTING, INC.**

# DRILL STEM TEST REPORT

**FLUID SUMMARY**

Shakespeare Oil Co. Inc

**25-16s-34w Scott Co. KS**

202 West Main St.  
Salem IL 62881

**Carson # 1-25**

Job Ticket: 45895

**DST#: 8**

ATTN: Tim Priest

Test Start: 2012.06.04 @ 01:40:00

## Mud and Cushion Information

Mud Type: Gel Chem

Cushion Type:

Oil API:

deg API

Mud Weight: 9.00 lb/gal

Cushion Length:

ft

Water Salinity:

ppm

Viscosity: 54.00 sec/qt

Cushion Volume:

bbbl

Water Loss: 9.56 in<sup>3</sup>

Gas Cushion Type:

Resistivity: ohm.m

Gas Cushion Pressure:

psig

Salinity: 7000.00 ppm

Filter Cake: 1.00 inches

## Recovery Information

Recovery Table

Length ft	Description	Volume bbl
61.00	OGCM 8%oil 15%g 77%m	0.300
0.00	61' of GIP	0.000

Total Length: 61.00 ft      Total Volume: 0.300 bbl

Num Fluid Samples: 0

Num Gas Bombs: 0

Serial #:

Laboratory Name:

Laboratory Location:

Recovery Comments:

Serial #: 8652

Inside

Shakespeare Oil Co. Inc

Carson # 1-25

DST Test Number: 8

