

Well location, SCHUPBACH 3510 #4-1H, located as shown in Lot 2 of Section 4, T35S, R10W, 6th P.M., Barber County, Kansas.

BASIS OF ELEVATION

SPOT ELEVATION LOCATED AT THE SOUTHWEST CORNER OF SECTION 12, T35S, R10W, 6th P.M. TAKEN FROM THE CORWIN, QUADRANGLE, KANSAS, 7.5 MINUTE QUAD (TOPOGRAPHIC MAP) PUBLISHED BY THE UNITED STATES DEPARTMENT OF THE INTERIOR, GEOLOGICAL SURVEY. SAID ELEVATION IS MARKED AS BEING 1274 FEET.

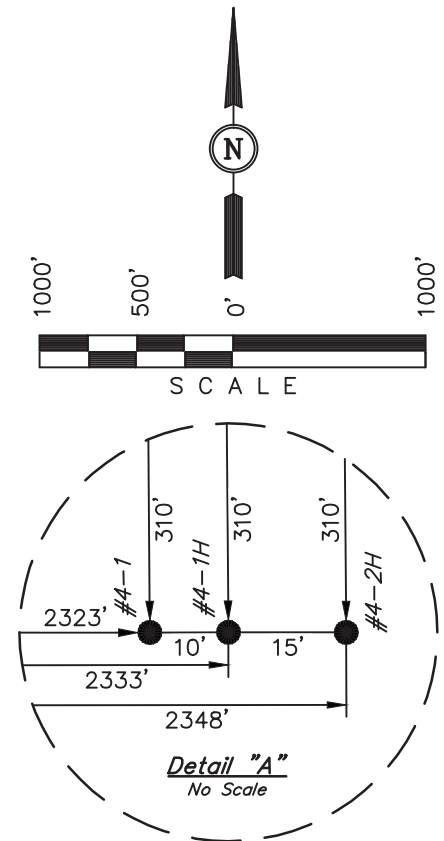
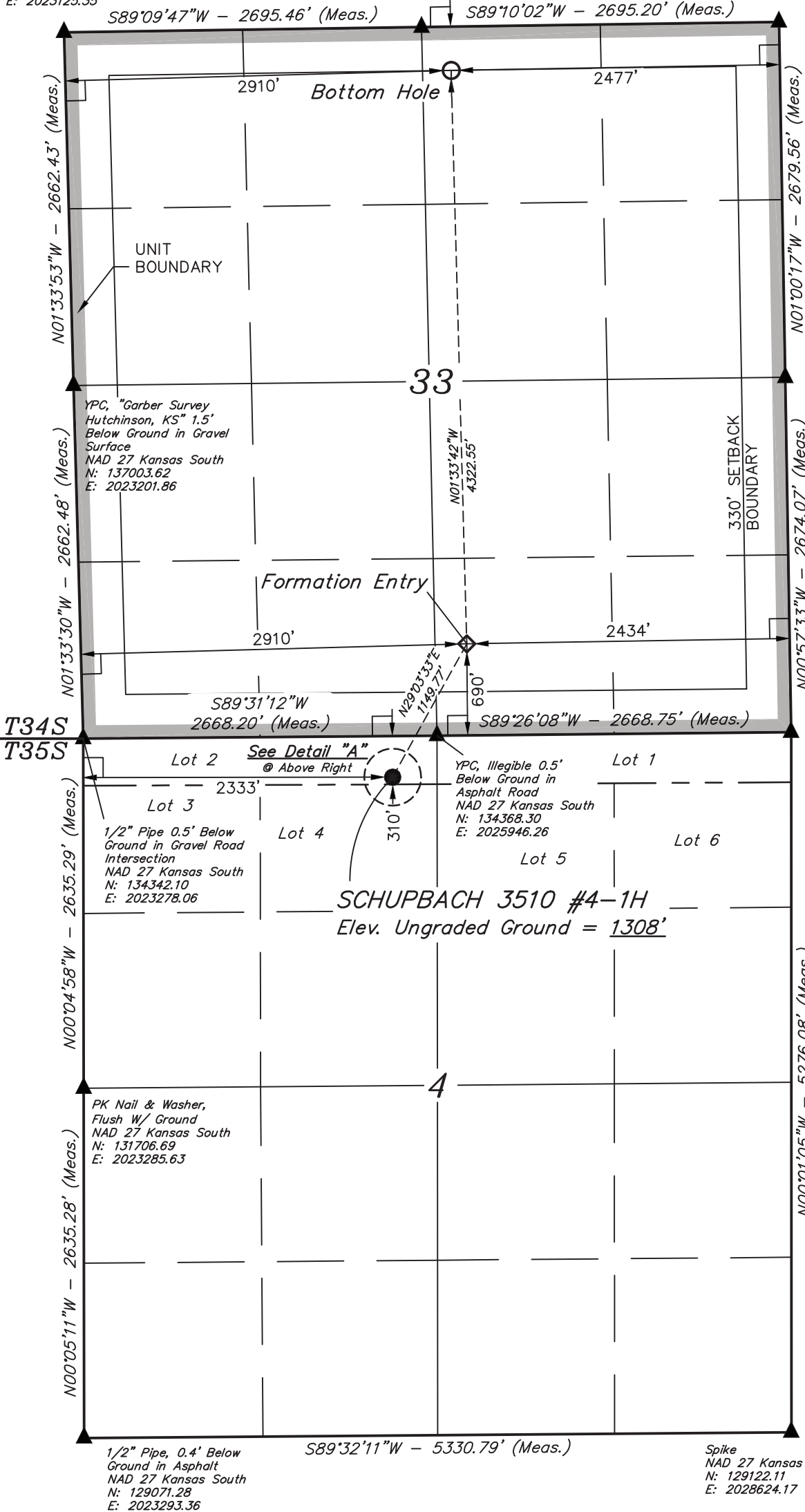
BASIS OF BEARINGS

BASIS OF BEARINGS IS A G.P.S. OBSERVATION.

5/8" Rebar 0.5' Below Ground in Gravel Road Intersection  
NAD 27 Kansas South  
N: 139665.07  
E: 2023125.35

YPC, "Garber Survey Hutchinson, KS" 0.3' Below Ground in Gravel Road  
NAD 27 Kansas South  
N: 139708.33  
E: 2025820.57

Spike & Washer 0.1' Below Ground in Asphalt Road  
NAD 27 Kansas South  
N: 139751.40  
E: 2028515.54



1/2" Rebar 0.2' Below Ground in Asphalt Road  
NAD 27 Kansas South  
N: 137072.20  
E: 2028566.37

Nail & Square Washer 0.2' Below Ground in Asphalt Road Intersection  
NAD 27 Kansas South  
N: 134398.44  
E: 2028614.96

T34S  
T35S

Lot 2  
Lot 3  
Lot 4  
Lot 5  
Lot 6

1/2" Pipe 0.5' Below Ground in Gravel Road Intersection  
NAD 27 Kansas South  
N: 134342.10  
E: 2023278.06

PK Nail & Washer, Flush W/ Ground  
NAD 27 Kansas South  
N: 131706.69  
E: 2023285.63

1/2" Pipe, 0.4' Below Ground in Asphalt  
NAD 27 Kansas South  
N: 129071.28  
E: 2023293.36

LEGEND:  
 L-shaped symbol = 90° SYMBOL  
 Circle with crosshair = PROPOSED WELL HEAD.  
 Triangle = SECTION CORNERS LOCATED.

CERTIFICATE

THIS IS TO CERTIFY THAT THE ABOVE PLAT WAS PREPARED FROM FIELD NOTES OF ACTUAL SURVEYS MADE BY ME OR UNDER MY SUPERVISION AND THAT THE SAME ARE TRUE AND CORRECT TO THE BEST OF MY KNOWLEDGE AND BELIEF.

REVISED: 07-11-12 C.C.  
 REVISED: 07-09-12 C.A.G.  
 REVISED: 05-11-12  
 REVISED: 04-26-12  
 REVISED: 03-22-12

REGISTERED LAND SURVEYOR  
 REGISTRATION NO. NSR  
 STATE OF KANSAS  
 JUSTIN S. ...  
 SURVEYOR

<b>UINTAH ENGINEERING &amp; LAND SURVEYING</b>		
85 SOUTH 200 EAST - VERNAL, UTAH 84078		
(435) 789-1017		
SCALE 1" = 1000'	DATE SURVEYED: 02-15-12	DATE DRAWN: 02-17-12
PARTY D.S. K.S. C.C.	REFERENCES G.L.O. PLAT	
WEATHER COLD	FILE SGOMI	

NAD 83 (#4-1H TARGET BOTTOM HOLE) LATITUDE = 37°02'58.02" (37.049450) LONGITUDE = 98°24'40.02" (98.411117)	NAD 83 (#4-1H FORMATION ENTRY) LATITUDE = 37°02'15.29" (37.037581) LONGITUDE = 98°24'38.54" (98.410706)	NAD 83 (#4-1H SURFACE LOCATION) LATITUDE = 37°02'05.35" (37.034819) LONGITUDE = 98°24'45.42" (98.412617)
NAD 27 (#4-1H TARGET BOTTOM HOLE) LATITUDE = 37°02'57.92" (37.049422) LONGITUDE = 98°24'38.75" (98.410764)	NAD 27 (#4-1H FORMATION ENTRY) LATITUDE = 37°02'15.20" (37.037556) LONGITUDE = 98°24'37.27" (98.410353)	NAD 27 (#4-1H SURFACE LOCATION) LATITUDE = 37°02'05.26" (37.034794) LONGITUDE = 98°24'44.15" (98.412264)
STATE PLANE NAD 27 (KANSAS SOUTH) N: 139381.86 E: 2026044.81	STATE PLANE NAD 27 (KANSAS SOUTH) N: 135060.89 E: 2026168.80	STATE PLANE NAD 27 (KANSAS SOUTH) N: 134055.00 E: 2025611.76