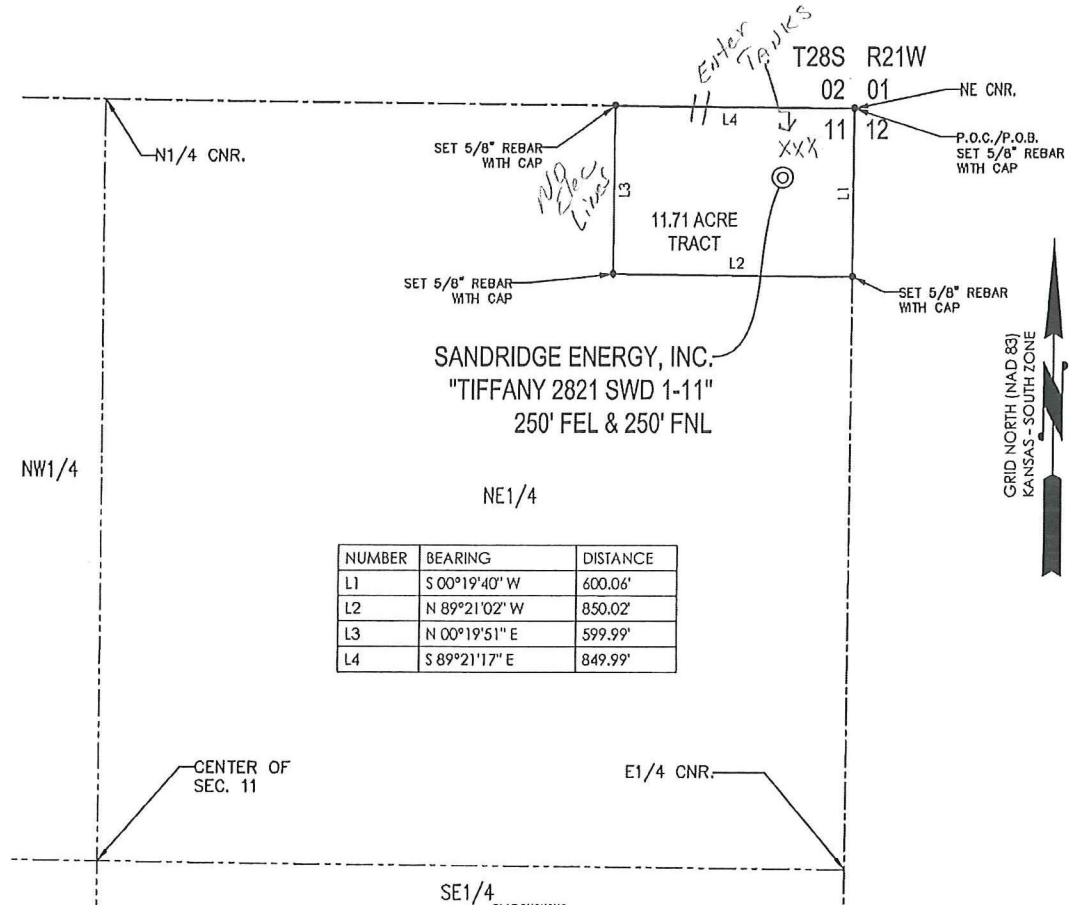


T 28 S - R 21 W



NUMBER	BEARING	DISTANCE
L1	S 00°19'40" W	600.06'
L2	N 89°21'02" W	850.02'
L3	N 00°19'51" E	599.99'
L4	S 89°21'17" E	849.99'

11.71 ACRE TRACT OF LAND IN THE
 NE1/4 OF SECTION 11, T28S-R21W,
 FORD COUNTY, KANSAS

METES AND BOUNDS DESCRIPTION (11.71 ACRE TRACT)

PART OF THE NE1/4 OF SECTION 11, TOWNSHIP 28 SOUTH, RANGE 21 WEST, FORD COUNTY, KANSAS,
 MORE PARTICULARLY DESCRIBED AS FOLLOWS:

COMMENCING AT A SET 5/8" REBAR MARKED "LS 1121" AT THE NORTHEAST CORNER OF SAID SECTION 11, SAID POINT BEING THE POINT OF BEGINNING;
 THENCE S 00°19'40" W, A DISTANCE OF 600.06 FEET TO A SET 5/8" REBAR WITH CAP MARKED "LS1121;"
 THENCE N 89°21'02" W, A DISTANCE OF 850.02 FEET TO A SET 5/8" REBAR WITH CAP MARKED "LS1121;"
 THENCE N 00°19'51" E, A DISTANCE OF 599.99 FEET TO A SET 5/8" REBAR WITH CAP MARKED "LS1121;"
 THENCE S 89°21'17" E, A DISTANCE OF 849.99 FEET TO THE POINT OF BEGINNING.

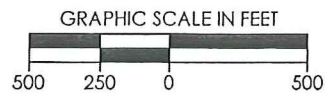
SAID TRACT CONTAINING 11.71 ACRES OF LAND AS SURVEYED, MORE OR LESS.

BASIS OF BEARINGS:
 KANSAS COORDINATE SYSTEM 1983 SOUTH ZONE
BEARINGS: GRID
DISTANCES: US SURVEY FOOT AT GRID
COORDINATES: US SURVEY FOOT AT GRID

SURVEYOR'S CERTIFICATE:
 I, JAMES GERARD TEMPLE, KANSAS LICENSED PROFESSIONAL LAND SURVEYOR, NO. 1121, DO
 HEREBY CERTIFY THAT THIS PLAT REPRESENTS THE RESULTS OF A SURVEY MADE ON THE GROUND
 UNDER MY SUPERVISION ON THE DATE OF 5/14/2012.



{GLO R}- GENERAL LAND OFFICE RECORD
 {PERM R}- PERMANENT SURVEY RECORD
 {M}- MEASURED DATA



REVISION	SandRidge		
	"TIFFANY 2821 SWD 1-11" PART OF THE NE1/4 OF SECTION 11, T-28-S, R-21-W PROPOSED DRILL SITE FORD COUNTY, KANSAS		
	SCALE: 1" = 500'	DRAWN BY: C.THATCHER	SHEET NO.: 1 OF 1
	PLOT DATE: 05-14-2012		