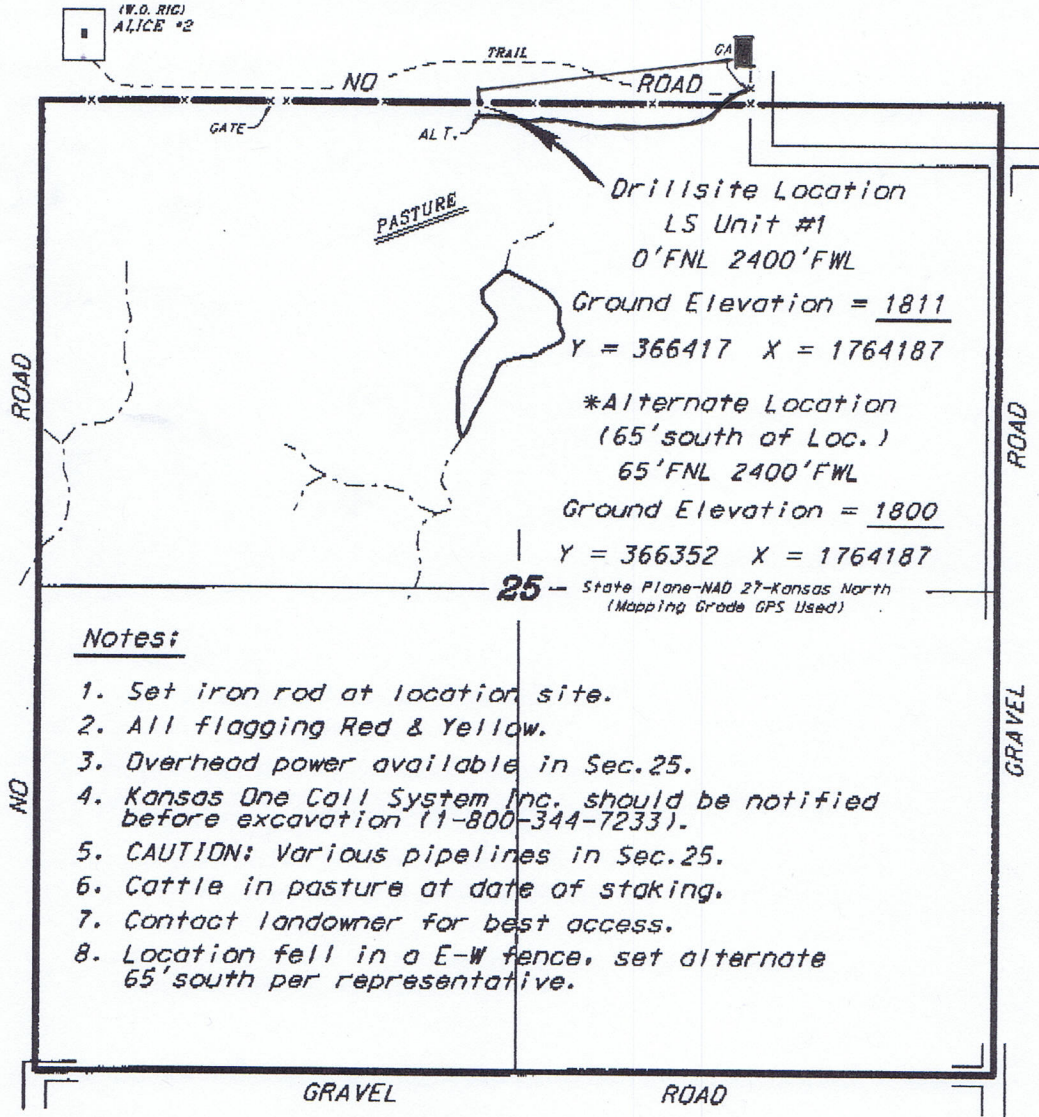


**BRUCE OIL COMPANY, LLC  
LS UNIT LEASE  
N.1/2, SECTION 25, T8S, R14W  
OSBORNE COUNTY, KANSAS**



\*Ingress and egress to location as shown on this plat is per usage only and may not be legally opened for public use. Contact landowner, tenant and county road department for access.

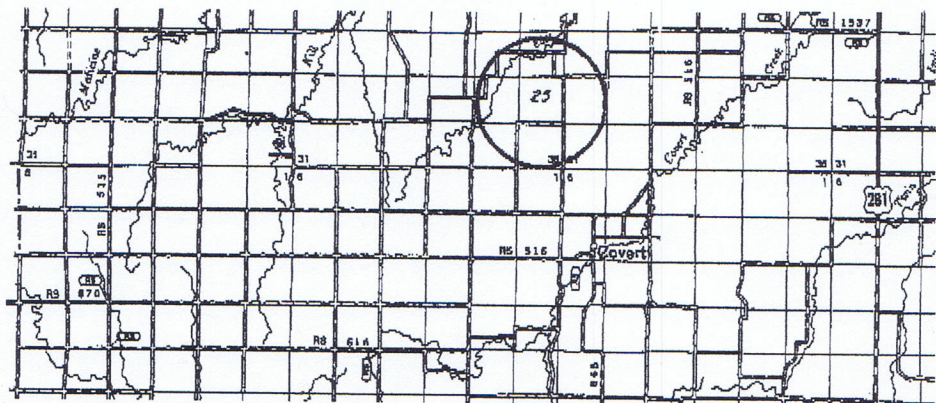
Drillsite Location  
LS Unit #1  
O'FNL 2400'FWL  
Ground Elevation = 1811  
Y = 366417 X = 1764187

\*Alternate Location  
(65' south of LOC.)  
65'FNL 2400'FWL  
Ground Elevation = 1800  
Y = 366352 X = 1764187

25 - State Plane-NAD 27-Kansas North  
(Mapping Grade GPS Used)

**Notes:**

1. Set iron rod at location site.
2. All flagging Red & Yellow.
3. Overhead power available in Sec.25.
4. Kansas One Call System Inc. should be notified before excavation (1-800-344-7233).
5. CAUTION: Various pipelines in Sec.25.
6. Cattle in pasture at date of staking.
7. Contact landowner for best access.
8. Location fell in a E-W fence, set alternate 65'south per representative.



\* Controlling data is based upon the best maps and photographs available to us and upon a regular section of land containing 360 acres.  
\* Approximate section lines were determined using the normal standard of care of oilfield surveyors practicing in the state of Kansas. The section corners, which establish the precise section lines, were not necessarily located, and the exact location of the drillsite location in the section is not guaranteed. Therefore, the operator securing this service and accepting this plat and all other duties relating thereon agree to hold Central Kansas Oilfield Services, Inc., its officers and employees harmless from all losses, costs and expenses and said entities released from any liability from incidental or consequential damages.  
\* Elevations derived from National Geodetic Vertical Datum.

Date July 18, 2012