

LOG-TECH OF KANSAS, INC.

86 SW 10 AVE.

GREAT BEND, KANSAS 67530

(620) 792-2167

INVOICE

7072

Date 6-19-2012

CHARGE TO: KIN Petroleum

ADDRESS _____

R/A SOURCE NO. _____ CUSTOMER ORDER NO. _____

LEASE AND WELL NO. Klepper #1-36 FIELD Mary Ida

NEAREST TOWN Cleffina COUNTY Barton STATE K.S.

SPOT LOCATION SE-NW-SW-NW SEC. 36 TWP. 18S RANGE 11W

ZERO 8' AGL CASING SIZE 5 1/2 WEIGHT _____

CUSTOMER'S T.D. _____ LOG TECH _____ FLUID LEVEL _____

ENGINEER Lance Gregg OPERATOR J. Walcher

PERFORATING				
Description	No. Shots	Depth		Amount
		From	To	
<u>Titan (4039-325T)</u>	<u>16</u>	<u>3298</u>	<u>3302</u>	
				<u>1580</u> ⁰⁰

DEPTH AND OPERATIONS CHARGES						
Description	Depth		Total No. Ft.	Price Per Ft.	Amount	
	From	To				
<u>Run GR/CCL/CBL</u>	<u>0</u>	<u>3308</u>	<u>3308</u>	<u>.31</u>	<u>1025</u>	<u>48</u>
<u>" " " log</u>	<u>3308</u>	<u>2240</u>	<u>Min</u>	<u>.29</u>	<u>580</u>	<u>00</u>

MISCELLANEOUS		
Description	Quantity	Amount
<u>Service Charge</u>	<u>1</u>	<u>550</u> ⁰⁰

PRICES SUBJECT TO CORRECTION BY BILLING DEPARTMENT

RECEIVED THE ABOVE SERVICES ACCORDING TO THE TERMS AND CONDITIONS SPECIFIED ON THE REVERSE SIDE TO WHICH WE HEREBY AGREE.

[Handwritten Signature]

Customer Signature

Date

Sub Total	<u>3735</u> ⁴⁸
Code Ref. Tool Insurance	
Tax	<u>(747.48)</u>
	<u>2988 00</u>

OPERATOR

Company: KN Petroleum
Address: 1105 Walnut
Great Bend, KS 67530

Contact Geologist:
Contact Phone Nbr: 620-793-6005
Well Name: Klepper #1-36
Location: 8 5/8" @ 329'
Pool:
State: Kansas

API: 15-009-25675-00-00
Field: Mary Ida
Country: USA



Musgrove

**PETROLEUM
CORPORATION**
Claflin, Kansas

Scale 1:240 Imperial

Well Name: Klepper #1-36
Surface Location: 8 5/8" @ 329'
Bottom Location:
API: 15-009-25675-00-00
License Number:
Spud Date: 6/5/2012 Time: 3:34 PM
Region: Se-Nw-Sw-Nw 36-18s-11w
Drilling Completed: 6/11/2012 Time: 8:50 PM
Surface Coordinates: 1945' From North Line & 560' From West Line
Bottom Hole Coordinates:
Ground Elevation: 1739.00ft
K.B. Elevation: 1747.00ft
Logged Interval: 2500.00ft To: 3360.00ft
Total Depth: 3360.00ft
Formation: ARBUCKLE
Drilling Fluid Type: Chemical mud displaced at 2610'

SURFACE CO-ORDINATES

Well Type: Vertical
Longitude:
N/S Co-ord: 1945' From North Line
E/W Co-ord: 560' From West Line
Latitude:

LOGGED BY

Company: Musgrove Petroleum Corp.
Address: 212 Main St.
Claflin, KS 67525
Phone Nbr: 620-546-3960
Logged By: Geologist Name: Josh Austin

CONTRACTOR

Contractor: Southwind Drilling, Inc
Rig #: 6
Rig Type:
Spud Date: 6/5/2012 Time: 3:34 PM
TD Date: 6/11/2012 Time: 8:50 PM
Rig Release: Time:

RECEIVED
JUL 11 2012
KCC WICHITA

ELEVATIONS

K.B. Elevation: 1747.00ft Ground Elevation: 1739.00ft

K.B. to Ground: 8.00ft

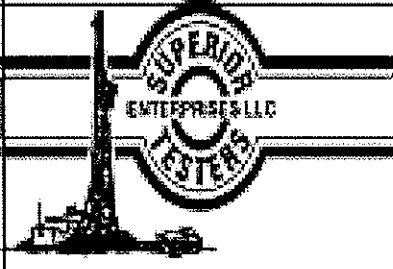
NOTES

On the basis of the high structural position, positive drill stem test, and after reviewing the electric log, it was recommended by all parties involved to run 5 1/2" production casing at the rotary total depth.

K&N Petroleum

well comparison sheet

DRILLING WELL Klepper					COMPARISON WELL Continental Doll #1				COMPARISON WELL Petroleum Doll #1			
1747 KB					1752 KB		Structural Relationship		1749 KB		Structural Relationship	
Formation	Sample	Sub-Sea	Log	Sub-Sea	Log	Sub-Sea	Sample	Log	Log	Sub-Sea	Sample	Log
Anhydrite			496	1251								
Topeka	2574	-827	2572	-825					2574	-825		
Heebner	2840	-1093	2839	-1092	2846	-1094	1	2	2842	-1093	0	1
Toronto	2858	-1111	2856	-1109	2864	-1112	1	3	2860	-1111	0	2
Douglas	2872	-1125	2872	-1125					2877	-1128	3	3
Brown Lime	2956	-1209	2956	-1209	2962	-1210	1	1	2959	-1210	1	1
Lansing	2975	-1228	2973	-1226	2981	-1229	1	3	2978	-1229	1	3
Base KC	3239	-1492	3237	-1490	3242	-1490	-2	0	3227	-1478	-14	-12
Arbuckle	3283	-1536	3274	-1527	3320	-1568	32	41	3303	-1554	18	27
RTD	3360	-1613			3360	-1608			3324	-1575		
LTD	3358	-1611							3321	-1572		



DRILL STEM TEST REPORT

K&N Petroleum 38-18c-11w-Barton

1105 Walnut Creek Blvd Klepper 1-38

Kansas 67530 Job Ticket: 17879 DST# 1

ATTN: Josh Austin Test Start: 2012.08.09 @ 04:08:00

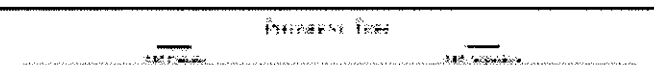
GENERAL INFORMATION:

Formation: Landing H-J	Test Type: Conventional Bottom Hole (Initial)
Deviated: No Whipstock ft (KB)	Tester: Dustin Ellis
Time Tool Opened: 08:09:30	Unit No: 3315-Grand Band-40
Time Test Ended: 10:58:30	Reference Elevations: 1747.00 ft (KB)
Interval: 3095.00 ft (KB) To 3180.00 ft (KB) (TVCI)	1739.00 ft (CF)
Total Depth: 3180.00 ft (KB) (TVCI)	KB to GRMOP: 8.00 ft
Hole Diameter: 7.88 inches-hole Condition: Fair	

Serial #: 8406 Inside	Capacity: 5000.00
Press @ Run Depth: 150.88 psia @ 3180.29 ft (KB)	Last Calc: 2012.08.09
Start Date: 2012.08.09	End Date: 2012.08.09
Start Time: 04:08:00	End Time: 10:58:30
	Time On Btm: 2012.08.09 @ 08:09:00
	Time Off Btm: 2012.08.09 @ 09:12:30

TEST COMMENT: 1st Open - 30 minutes Strong blow blew bottom bucket 1 minute.
 1st Shut in - 45 minutes Yes blow back
 2nd Open - 45 minutes Strong blow blew bottom bucket instantly.
 2nd Shut in - 60 minutes Yes blow back

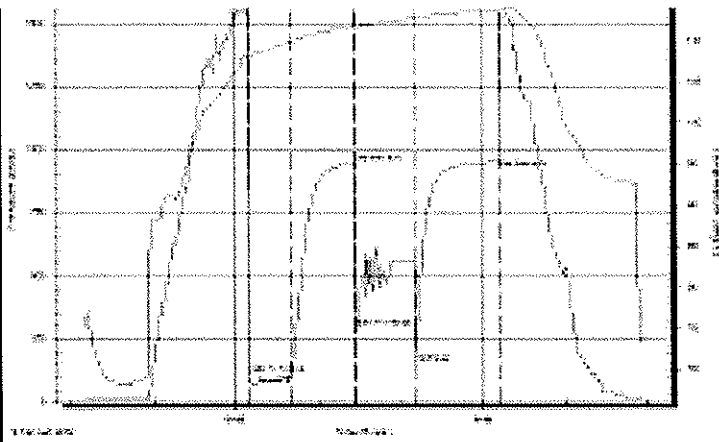
Pressure Test



PRESSURE SUMMARY

Time	Pressure	Temp	Annotation

RECEIVED
JUL 11 2012
KCC WICHITA



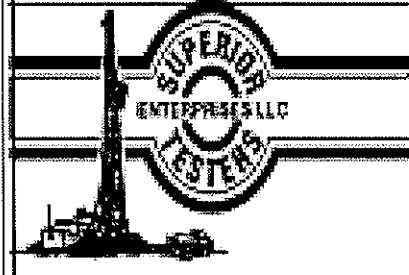
(Min)	(psi)	(deg F)	Annotation
0	1598.14	108.39	Initial Hydro-static
1	118.28	107.92	Open To Flow(1)
31	104.08	109.97	Shut-In(1)
78	947.41	111.90	End Shut-In(1)
79	207.84	111.72	Open To Flow(2)
132	159.88	112.77	Shut-In(2)
183	924.59	113.88	End Shut-In(2)
184	1538.31	114.11	Final Hydro-static

Recovery

Length (ft)	Description	Volume (bbl)
82.00	Mud cut oil 5% OIL 95% MUD	0.87
82.00	Gasly oil cut mud	0.87
0.00	Gas 60% Oil 20% Mud 20%	0.00
82.00	Gasly oil cut mud	0.87
0.00	Gas 70% Oil 10% Mud 20%	0.00

Gas Rates

	Flow (mcf/d)	Pressure (psi)	Gas Rate (scfd)
First Gas Rate	0.13	8.00	2.25
Last Gas Rate	0.25	5.00	7.93
Mix. Gas Rate	0.38	7.00	25.84



DRILL STEM TEST REPORT

R&N Petroleum

38-18c-11w-Barton

1105 Walnut Street East
Karnes 77550

Klepper 1-38

ATTN: Josh Austin

Job Ticket: 17830

DST#2

Test Start: 2012.08.09 @ 08:14:00

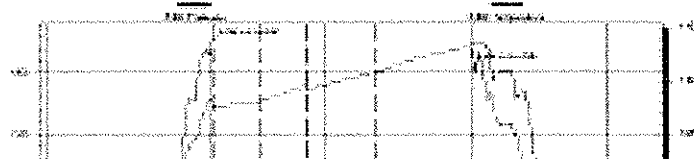
GENERAL INFORMATION:

Formation: Lansing R&L
 Deviated: No Whipstock: ft (KB)
 Time Tool Opened: 07:48:00
 Time Test Ended: 12:18:30
 Test Type: Conventional Bottom Hole (Initial)
 Tester: Dustin Ellis
 Unit No: 3915-08-40
 Interval: 3162.00 ft (KB) To 3230.00 ft (KB) (TVIS)
 Reference Elevation: 1747.00 ft (KB)
 Total Depth: 3230.00 ft (KB) (TVIS)
 Reference Elevation: 1739.00 ft (CP)
 Hole Diameter: 7.88 inches-hole Condition: Fair
 KB to GRDF: 8.00 ft

Serial #: 8400 Oostalka
 Press @ Run Depth: 85.88 psi @ 3227.12 ft (KB) Capacity: 5000.00 psi
 Start Date: 2012.08.09 End Date: 2012.08.09 Leak Cells: 2012.08.09
 Start Time: 08:14:00 End Time: 12:18:30 Time On Btm: 2012.08.09 @ 07:47:30
 Time Off Btm: 2012.08.09 @ 10:33:00

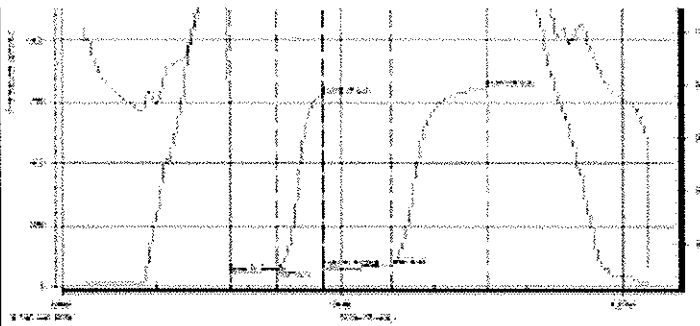
TEST COMMENT:
 1st Open: 30 Minutes Fair building blow built to 8 inches into bucket of water
 1st Shut in: 30 Minutes No blow back
 2nd Open: 45 Minutes Fair building blow built to bottom bucket 28 minutes.
 2nd Shut in: 80 Minutes No blow back

Pressure vs. Time



PRESSURE SUMMARY

Time (Min)	Pressure (psi)	Temp (deg F)	Annotation
0	1623.79	108.29	Initial Hydro-static
1	58.08	107.70	Open To Flow(1)
31	72.43	108.08	Shut-In(1)



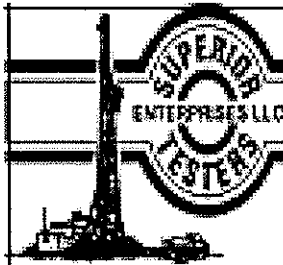
50	773.58	100:48	End Shut-in(1)
80	78.27	100:18	Open To Flow(2)
105	85.88	110:31	Shut-in(2)
125	811.38	113:38	End Shut-in(2)
180	1065.51	113:40	Final Hydro-static

Recovery

Length (ft)	Description	Volume (bbl)
50.00	Oil cut mud 90%oil 70% mud	0.14
81.00	Oil plus water cut mud	0.88
0.00	70%oil 70% mud 20%water	0.00

Gas Rates

Choke (inches)	Pressure (psia)	Gas Rate (scfd)



DRILL STEM TEST REPORT

R&N Petroleum 38-18c-11w-Barton
 1105 Walnut Great Bend Kansas 67530 Klapper 1-38
 ATTN: Josh Austin Job Ticket: 17891 DST# 3
 Test Start: 2012-08-10 @ 09:57:00

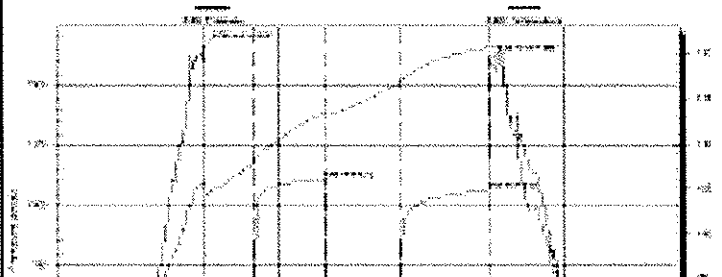
GENERAL INFORMATION:

Formation: Arbuckle
 Deviated: No Whipstock: 11 (KB)
 Test Type: Conventional Bottom Hole (Initial)
 Time Tool Opened: 11:14:00
 Tester: Dustin Ellis
 Time Test Ended: 15:55:30
 Unit No: 3315-08-40
 Interval: 3235.00 ft (KB) To 3287.00 ft (KB) (TVD)
 Reference Elevations: 1747.00 ft (KB)
 Total Depth: 3287.00 ft (KB) (TVD) 1750.00 ft (OP)
 Hole Diameter: 7.88 inches Hole Condition: Fair KB to GRDF: 8.00 ft

Serial #: 8400 Outside
 Press@RunDepth: 189.83 psia @ 3284.19 ft (KB) Capacity: 5000.00 psia
 Start Date: 2012-08-10 End Date: 2012-08-10 Last Cells: 2012-08-10
 Start Time: 09:57:00 End Time: 15:55:30 Test On Btm: 2012-08-10 @ 11:13:30
 Test Off Btm: 2012-08-10 @ 14:13:30

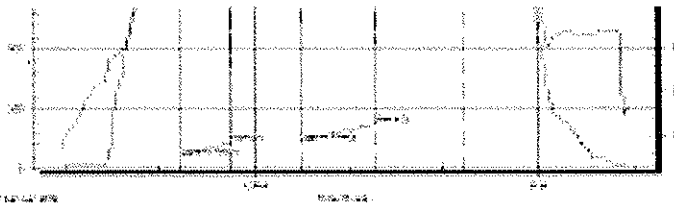
TEST COMMENT:
 1st Open: 30 minutes Fair building blow blow bottom bucket in 20 minutes.
 1st Shut: 45 minutes No blow back.
 2nd Open: 45 minutes Fair building blow blow bottom bucket 14 minutes.
 2nd Shut in 90 minutes No blow back.

Pressure Time



PRESSURE SUMMARY

Time (Min)	Pressure (psia)	Temp (deg F)	Annotation
0	189.83	105.25	Initial Hydro-static
1	51.71	104.58	Open To Flow (1)
31	110.44	107.88	Shut-in(1)
75	1111.52	113.30	End Shut-in(1)
79	113.08	112.90	Open To Flow(2)
123	189.83	116.83	Shut-in(2)
180	1065.51	120.73	End Shut-in(2)



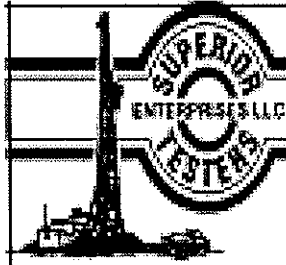
150 1508.58 130.93 Final Hydro-static

Recovery

Length (ft)	Description	Volume (bbl)
154.00	Clean gas/oil 100%	2.18
124.00	Oil cut mud Oil 80% Mud 20%	1.74
124.00	Oil plus gas cut mud	1.74
0.00	Gas 10% Oil 70% Mud 20%	0.00
		0.00

Gas Rates

Time (min)	Pressure (psia)	Gas Rate (scfd)
------------	-----------------	-----------------



DRILL STEM TEST REPORT

R&N Petroleum

38-18c-11w-Barton

1105 Walnut Creek Bend
Kansas 67530

Klipper 1-38

Job Ticket: 17880

DST#: 4

ATTN: Josh Austin

Test Start: 2012.08.10 @ 09:20:00

GENERAL INFORMATION:

Formation: Ar buckle
 Deviated: No Whipstock: ft (KB)
 Time Tool Opened: 10:45:30
 Time Test Ended: 18:48:30
 Interval: 3287.00 ft (KB) To 3297.00 ft (KB) (TVD)
 Total Depth: 3297.00 ft (KB) (TVD)
 Hole Diameter: 7.88 inches hole Condition: Fair

Test Type: Conventional Bottom Hole (Initial)
 Tester: Dustin Ellis
 Unit No: 3315-03-40
 Reference Elevation: 1747.00 ft (KB)
 1759.00 ft (SP)
 KB to GRVD: 8.00 ft

Serial #: 8406

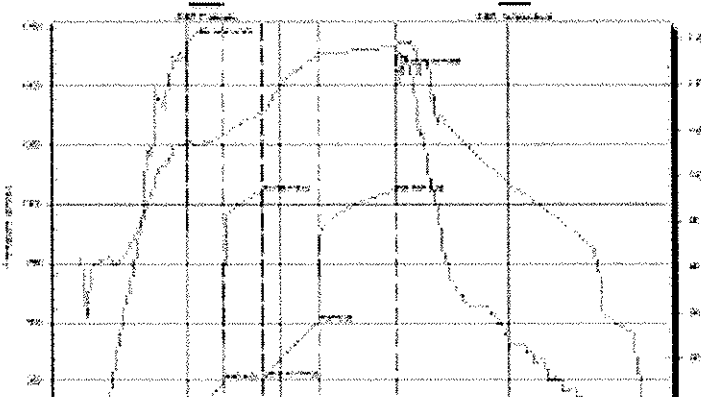
Outside

Press@RunDepth: 501.20 psia @ 3289.00 ft (KB)
 Start Date: 2012.08.10 End Date: 2012.08.10
 Start Time: 09:20:00 End Time: 18:48:30

Capacity: 5000.00 psia
 Last Call: 2012.08.11
 Time On Btm: 2012.08.10 @ 10:45:00
 Time Off Btm: 2012.08.10 @ 13:31:30

TEST COMMENT: 1st Open: 30 minutes Strong blow blow bottom bucket 4 minutes
 1st Shut in: 30 minutes No blow back
 2nd Open: 45 minutes Strong blow blow bottom bucket 5 minutes
 2nd Shut in: 60 minutes No blow back

Pressure Time



PRESSURE SUMMARY

Time (Min)	Pressure (psia)	Temp (deg F)	Annotation
0	1595.18	103.58	Initial Hydro-static
1	50.12	103.91	Open To Flow (1)
30	254.79	104.58	Shut-in (1)
60	1051.98	107.05	End Shut-in (1)
61	260.85	108.92	Open To Flow (2)
105	501.20	113.39	Shut-in (2)
168	1052.00	114.34	End Shut-in (2)
167	1595.51	114.45	Final Hydro-static

RECEIVED
 JUL 11 2012
 KCC WICHITA

Recovery			Gas Rates		
Length (ft)	Description	Volume (bbl)	Flow (mcf/d)	Pressure (psig)	Gas Rate (psig)
1445.00	Clean gas oil Gas 5% Oil 95%	20.27			

ROCK TYPES

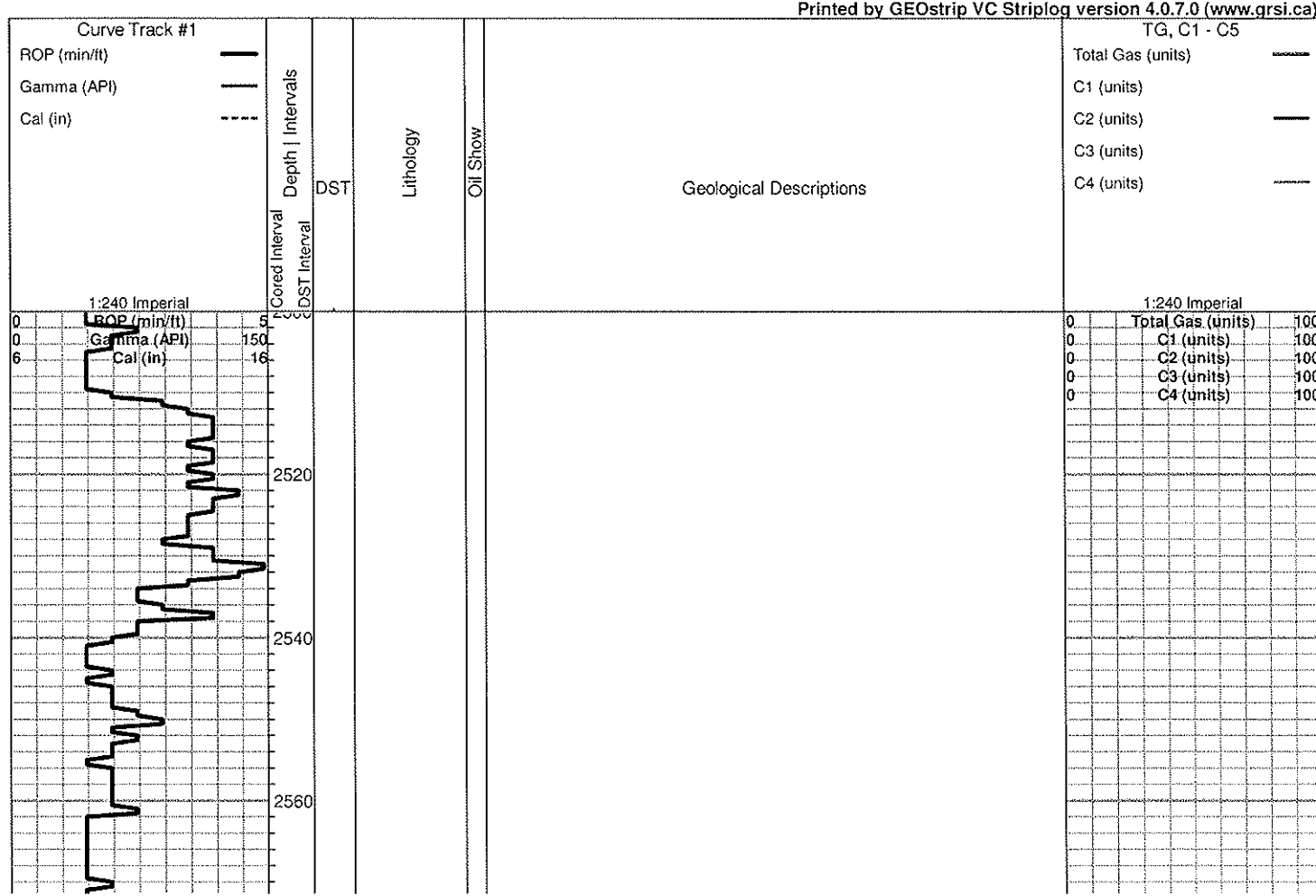
Congl	Lmst fw7> shale, grn	shale, gry	shale, red	Sltst
Dolsec		Carbon Sh	Ss	

ACCESSORIES

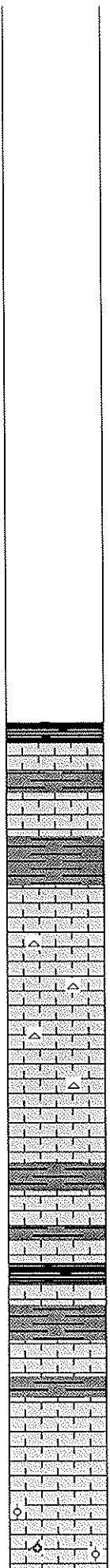
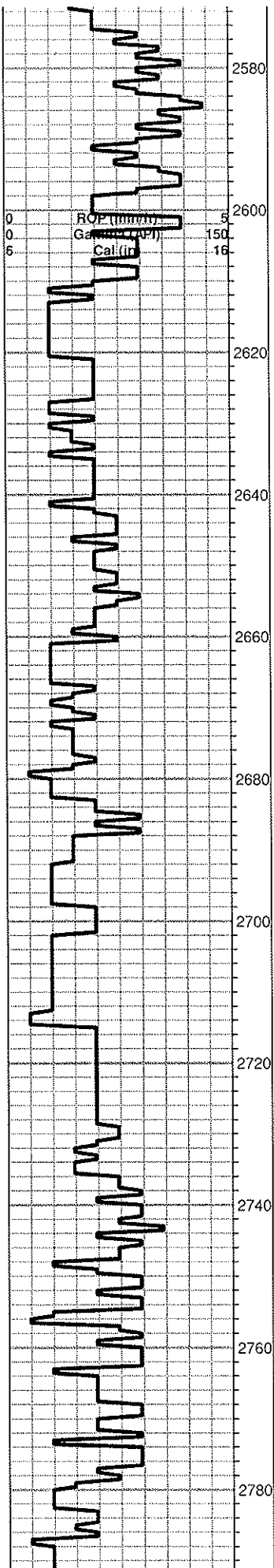
MINERAL	FOSSIL
• Silty	◊ Oolite
△ Chert White	⬢ Oomoldic
Mc Mica	

OTHER SYMBOLS

DST
■ DST Int
▣ DST alt
■ Core
tail pipe



TOPEKA 2574 (-827)



Samples wet and dry 2700-RTD

KING HILL

black carboniferous shale

grey-green shale

Limestone; grey-cream, fine-medium xln, dense, fossiliferous in part, few granular pieces, plus grey boney Chert

Limestone; cream-lt. grey fine xln, sparry calcite, dense, fossiliferous, cherty, plus grey-lt. grey fossiliferous boney Chert

grey shale

QUEEN HILL

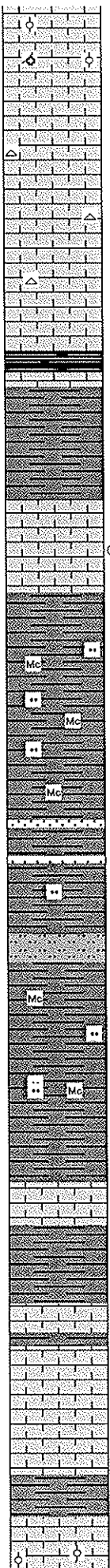
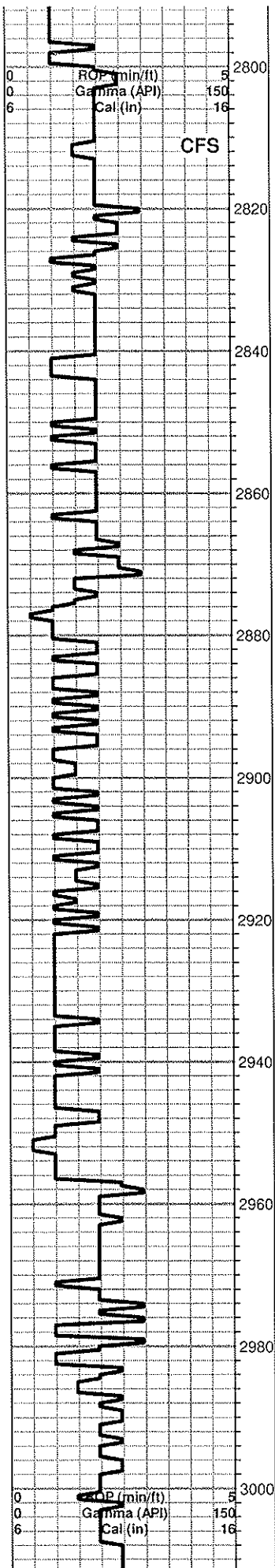
black carboniferous shale

Shale; rusty brown, grey, green, maroon

Limestone; lt. grey-cream, fine xln, dense, chalky in part

Limestone; cream-tan, fine-medium xln, few scattered finely oomoldic type porosity, trace

0	Total Gas (units)	100
0	C1 (units)	100
0	C2 (units)	100
0	C3 (units)	100
0	C4 (units)	100



spotty brown stain, trace lt. spotty free oil, very faint odor

Limestone; tan-cream, fine xln, fossiliferous, dense, poor porosity, cherty in part, no shows

Limestone; as above

HEEBNER 2840 (-1093)
black carboniferous Shale

grey-green; Shale

TORONTO 2858 (-1111)
Limestone; cream, fossiliferous, chalky, pin point type porosity, questionable trace brown stain, NSFO, no odor

DOUGLAS 2872 (-1125)
Shale; grey-dark grey, soft, silty in part, micaceous

Shale as above, silty, micaceous

Siltstone; grey, micaceous, shaley, no shows

Shale and Sand as above

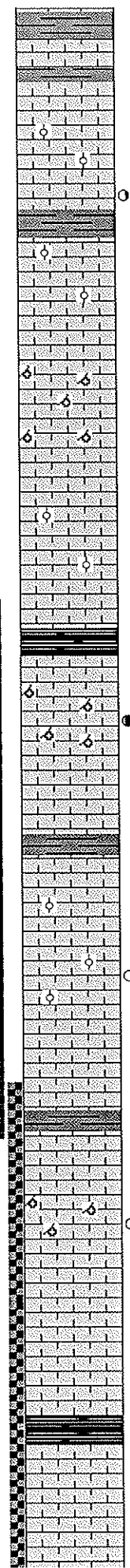
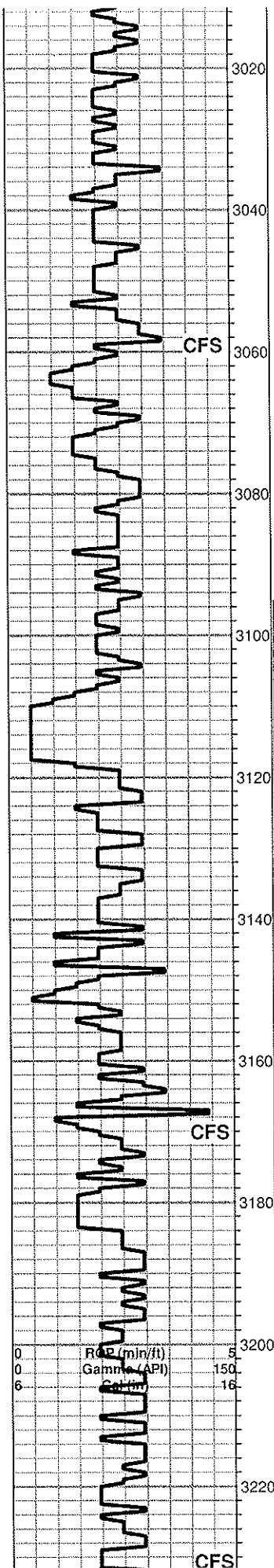
BROWN LIME 2956 (-1209)
Limestone; tan-brown, fine xln, dense, cherty

LANSING 2975 (-1228)
Limestone; cream, fine xln, chalky, fossiliferous in part, poorly developed porosity, no shows

Limestone; cream-grey, fine xln, fossiliferous in part, dense, cherty, poor visible porosity, no shows

0	Total Gas (units)	100
0	C1 (units)	100
0	C2 (units)	100
0	C3 (units)	100
0	C4 (units)	100

0	Total Gas (units)	100
0	C1 (units)	100
0	C2 (units)	100
0	C3 (units)	100
0	C4 (units)	100



Limestone; buff, highly oolitic, few sparry calcite cement, dense, poorly developed porosity, no shows

Limestone; cream-buff-tan, highly oolitic, few scattered oolitic type porosity, trace brown stain, trace spotty free oil, very faint odor

Limestone; cream, fine-medium xln, chalky, oolitic in part, trace brown stain, trace free oil

Limestone; cream-buff, oolitic, sub oomoldic, few scattered oomoldic porosity, no shows

Limestone; cream-tan, fine xln, slightly oolitic, dense, poorly developed porosity, no shows

Black carboniferous shale

Limestone; cream, oomoldic, chalky, fair-good oomoldic porosity, black-brown stain, SFO, faint-fair odor

grey shale

Limestone; cream, oolitic, chalky, few scattered porosity, no shows

Limestone; cream, highly oolitic, few oolitic porosity, golden brown stain, SFO, fair odor

black carboniferous shale plus grey-dark grey shale

Limestone; cream-lt. grey-white, oolitic/oomoldic, fair oomoldic porosity, brown-golden brown stain, SFO, faint-fair odor

Limestone; cream, fine xln, chalky, dense, fossiliferous in part, poor visible porosity, no shows

black carboniferous shale

Limestone; cream-tan-buff, fine xln, chalky in part, cherty, dense

DST #1 3095-3170
30-45-45-60

Blow; BOB in 1 min
fair blow back
Blow; GTS
Gas gauged as followed

2nd flow	Mcf/d
10 min	2.25
20min	25.64
30min	3.17
40min	7.93

Recovery;
62' oil cut mud
(5%oil 95%mud)
124' GOCM
(60%gas 20%oil 20% mud)

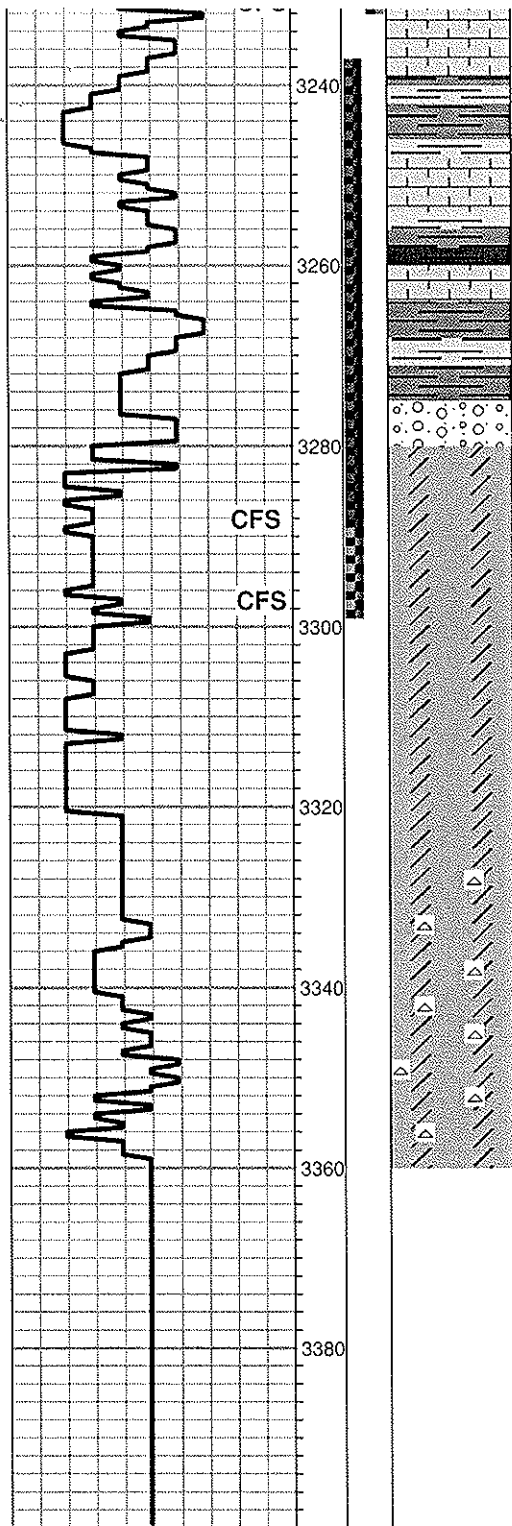
Pressures;
ISIP 947
FSIP 924
IFP 116-104
FFP 297-159
HSH 1566-1538

DST #2 3162-3230
30-30-45-60

Blow; built to 8"
Final; BOB in 28 min
no blow back

Recovery;
70' oil cut mud
(30%oil 70%mud)
61' oil water cut mud
(10%o 70%m 20%w)

Pressures;
ISIP 779
FSIP 811
IFP 58-72
FFP 78 85



BASE KANSAS CITY 3239 (-1492)

Shale; grey-green

Limestone; cream, fine xln, fossiliferous, chalky, dense, poor porosity

Shale; rusty brown-grey-green-maroon, plus pink-rose chalky Limestone

Limstone and Shale as above

ARBUCKLE 3283 (-1536)

Dolomite; tan, fine xln, sucrosic, few inter xln type porosity, brown stain, SFO, faint odor

Dolomite; cream-tan-buff, fine xln, slightly sucrosic, few scattered inter xln porosity, brown-dark brown stain, SFO, fair odor

Dolomite; grey-cream, fine-medium xln, dense, poorly developed porosity, trace black stain, NSFO, very faint odor

Dolomite; grey-buff, fine xln, dense, cherty, poor visible porosity, no shows

Chert; white, boney

Dolomite; tan-buff-lt. grey, fine xln, dense, cherty, poor visible porosity, plus white boney Chert

ROTARY TOTAL DEPTH 3360 (-1613)

FFP 10-03
HSH 1623-1520

DST #3 3236-3287
30-45-45-60

Blow; BOB in 20 min
Final; BOB in 14 min
no blow back

Recovery;
154' clean gassy oil
248' mud cut oil

Pressures;
ISIP 1111
FSIP 1065
IFP 51-110
FFP 113-189
HSH 1663-1065

DST #4 3287-3297
30-30-45-60

Blow; BOB in 4 min
Final; BOB in 5 min
no blow back

Recovery;
1445' clean gassy oil

Pressures;
ISIP 1051
FSIP 1052
IFP 50-254
FFP 250-501
HSH 1685-1555

COPLAND

Acid & Cement

POST OFFICE BOX 438
 HAYSVILLE, KS 67060
 (316) 524-1225
 (316) 524-1027 FAX

Invoice

BURRTON, KS ♦ GREAT BEND, KS
 (620) 463-5161 (620) 793-3366
 FAX (620) 463-2104 FAX (620) 793-3536

INVOICE NUMBER:
 C39757-IN

BILL TO:
 K & N PETROLEUM
 1105 WALNUT
 GREAT BEND, KS 67530

LEASE: KLEPPER 1-36

DATE	ORDER	SALESMAN	ORDER DATE	PURCHASE ORDER	SPECIAL INSTRUCTIONS	
06/12/2012	C39757		06/05/2012		NET 30	
QUANTITY	U/M	ITEM NO./DESCRIPTION		D/C	PRICE	EXTENSION
20.00	MI	CEMENT MILEAGE PUMP TRUCK		0.00	4.00	80.00
20.00	MI	CEMENT MILEAGE PU TRUCK		0.00	2.00	40.00
1.00	EA	CEMENT PUMP CHARGE		0.00	1,100.00	1,100.00
150.00	SAX	60-40 POZ MIX 2% GEL		0.00	9.25	1,387.50
100.00	SAX	COMMON CEMENT		0.00	11.25	1,125.00
9.00	SAX	CALCIUM CHLORIDE - SAX		0.00	40.00	360.00
1.00	EA	8 5/8" WOOD PLUG		0.00	65.00	65.00
259.00	EA	BULK CHARGE		0.00	1.25	323.75
233.20	MI	BULK TRUCK - TON MILES		0.00	1.10	256.52
		<i>Surface</i>		K & N PETROLEUM, INC. Lease Name <i>Klepper #1-36</i>		
				JIB <input checked="" type="checkbox"/> OFFICE <input type="checkbox"/> OTHER <input type="checkbox"/> POSTED <input type="checkbox"/>		
REMIT TO: P.O. BOX 438 HAYSVILLE, KS 67060		COP		Net Invoice: 4,737.77 BATCO Sales Tax: 85.05 Invoice Total: <u>4,822.82</u>		
RECEIVED BY _____		NET 30 DAYS				

There will be a charge of 1.5% "per month" (18% annual rate) on all accounts over 30 days past due.

Copeland

Acid & Cement

BURRTON, KS (620) 463-5161
 GREAT BEND, KS (620) 793-3366
 FAX (620) 463-2104 FAX (620) 793-3536

POST OFFICE BOX 438
 HAYSVILLE, KS 67060
 (316) 524-1225
 (316) 524-1027 FAX

Invoice

INVOICE NUMBER:
C39763-IN

BILL TO:
K & N PETROLEUM
1105 WALNUT
GREAT BEND, KS 67530

LEASE: KLEEPER 1-36

DATE	ORDER	SALESMAN	ORDER DATE	PURCHASE ORDER	SPECIAL INSTRUCTIONS	
06/14/2012	C39763		06/12/2012		NET 30	
QUANTITY	U/M	ITEM NO./DESCRIPTION		D/C	PRICE	EXTENSION
20.00	MI	CEMENT MILEAGE PUMP TRUCK		0.00	4.00	80.00
20.00	MI	CEMENT MILEAGE PU TRUCK		0.00	2.00	40.00
1.00	EA	CEMENT PUMP CHARGE		0.00	1,600.00	1,600.00
180.00	SAX	60-40 POZ MIX 2% GEL		0.00	9.25	1,665.00
1,250.00	LB	SALT		0.00	0.18	225.00
100.00	LB	FRICTION REDUCER C-37		0.00	3.75	375.00
400.00	LB	GILSONITE		0.00	0.50	200.00
1.00	EA	5 1/2 FLOAT SHOE W/AUTO FILL		0.00	355.00	355.00
2.00	EA	5 1/2" BASKETS		0.00	155.00	310.00
5.00	EA	5 1/2" CENTRALIZERS		0.00	65.00	325.00
1.00	EA	5 1/2" LATCH DOWN PLUG/BAFFLE		0.00	175.00	175.00
215.00	EA	BULK CHARGE		0.00	1.25	268.75
176.00	MI	BULK TRUCK - TON MILES		0.00	1.10	193.60
REMIT TO: P.O. BOX 438 HAYSVILLE, KS 67060		COP		K & N PETROLEUM, INC. Lease Name <u>Kleper #1-36</u>		Net Invoice: 5,812.35 BATCO Sales Tax: 201.85 Invoice Total: <u>6,014.20</u>
RECEIVED BY _____		NET 30 DAYS		JIB <input checked="" type="checkbox"/> OFFICE <input type="checkbox"/> OTHER <input type="checkbox"/> POSTED <input type="checkbox"/>		

There will be a charge of 1.5% "per month" (18% annual rate) on all accounts over 30 days past due.