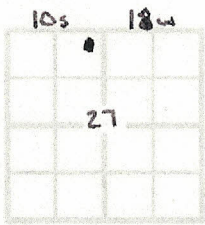


Marc Downing
 Consulting Petroleum Geologist
 1411 Washington Circle
 Hays, Ks 67601
 Phone: 620-428-1356 (cell) 785-621-2286

**GEOLOGIC
 REPORT
 LOG**

COMPANY Investment Equipment LLC



RECEIVED
 JUL 05 2012

WELL Eilers # 8

FIELD Eilers

KCC WICHITA

LOCATION 330' FNL + 2310' FNL

Arbuckle + LKC

SEC. 27 TWP. 10s RGE. 18w

ELEVATION KB 2085

COUNTY Rooks

GL 2076

STATE Kansas

Drilling Measured From: KB

Samples Saved From 3050 To: TD

Drilling Time From 2950 To: TD

Samples Examined From: 3050 To: TD

OPERATOR Investment Equipment LLC

Geological Supervision From 2950 To Total Depth

CONTRACTOR Maverick, Rig #108

Wellsite Geologist Marc Downing

COM: _____ COMP: 2-15-12

Electrical Surveys Log-Tech

CASING RECORD

SURF: 8 5/8" @ 270' PROD: 5 1/2" @ 3737'

CNL/COL

TOTAL DEPTH DRILLERS: 3737'

DIL

TOTAL DEPTH LOG: 3738'

MEL

FORMATION TOPS AND STRUCTURAL POSITION

FORMATION	SAMPLE TOP	ELECTRIC LOG TOP	SUB-SEA DATUM	STRUCTURAL POSITION
Top Anhydrite	NA	1429	+656	+3
Base Anhydrite	NA	1462	+623	NA
Topeka	3060	3058	-973	-1
HEEBNER	3276	3275	-1190	FL
Toronto	3291	3290	-1205	+1
LKC	3319	3317	-1232	-2
BKC	3533	3534	-1449	NA
Conglomerate	3559	3559	-1474	FL
Simpson Dol.	3622	3624	-1539	NA
Arbuckle	3654	3656	-1571	+2

REFERENCE WELL FOR STRUCTURE B&H Oil Properties

Eilers West #1

SE-NE-NW

Sec. 27-10s-18w

LEGEND



Anhydrite



Salt



Sandstone



Shale



Carbonate



Limestone



Coal/Lime



Chert



Dolomite

DRILLING TIME IN MINUTES
PER FOOT

Rate of Penetration Decreases



5" 10" 15" 20" 25"

DEPTH

LITHOLOGY

SAMPLE DESCRIPTIONS

SMOOTH TIO

REMARKS

2950

2950

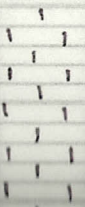
3000

50

Topeka
3060(-975)



sh: gray



LS: tan-wht, fine gr,
por + dms. Scot foss
w/ depth, few sub xtn ex.

Topeka
3060(-975)

50



Sh: ggy



LS: tan-whit, fin xln,
prx + dms. Scot foss
w/ depth, few sub xln ex.



Sh: ggy



LS: whit, fin-med xln, sub
xln w/ few foss. Mostly
dms w/ prx

3100



Sh: dk ggy



Sh: ggy



LS: whit-tan, fin xln, All
prx + dms.



LS: whit, fin xln, sub xln,
ex tang dolomitic in prx,
prx, dms, ns.



Sh: ggy w/ br



LS: whit, fin xln, foss. fr Amt
dolom LS, ns

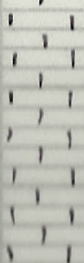
50



Sh: Black Carb



Sh: ggy

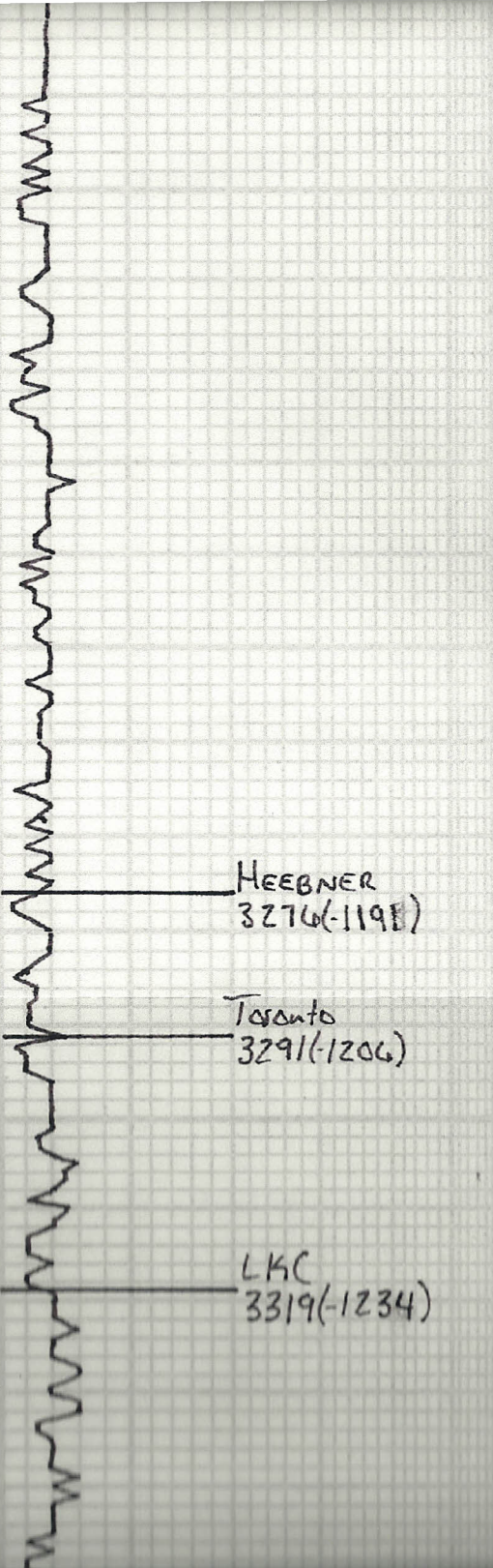


LS: whit, fin-vfin xln,
All vprx + totally
barren, ns.

3200



Sh: ggy



3200

All v. prog + totally barren, NS.

Sh: gy

Sh: Black Carb

Sh: gry
 LS: wht, fm-mid xln, foss. Mostly subxln-chlky, 1-2 rx ul Fr str + sfo in gd int foss, No Od. Scat gry-bn foss onto.

50

Sh: gry
 LS: wht, fm-mid xln, scat foss, Fr int foss, subxln, pr hvy str + sfo, No Od.

LS: wht, fm-mid xln, scat foss, long sltly intd, subxln-chlky. Totally barren. Trng v chlky ul depth, gry chnto, Fr Od.

HEEBNER
3276(-119E)

Sh: Black Carb

Toronto
3291(-120G)

Sh: gy

LS: wht, fm xln, few sm l foss, Fr gd int xln, many subxln chlky ex. Scat lt bn str, rare sfo, lt-fr Od.

3300

LKC
3319(-1234)

Sh: gy - lt gy

LS: wht, fm-vfm xln, v dms, No visk, NS.
 LS: wht-fan, fm-mid xln, foss. 3-4 rx ul Fr int xln + vrgk, Fr sfo, no Od.

Sh: gy

LKC
3319(1234)

50

Sh: 5/2 - 1/2 5/2

LS: wht, Fu-vFu xln, v dms,

No visk, NS.

LS: wht-tan, Fu-mid xln, foss.

3-4 rx w/ Fr int xln + vugx,
Fr SFO, NO Od.

Sh: 5/2

LS: wht, Fu xln, Fu-mid xln,
mostly prx + dms. 2-3 rx w/
Fr stn w/ spthd SFO, dalam in
prt, NO Od.

Sh: 5/2

LS: tan-wht, Mostly dms, 2-3
rx w/ pr vugx w/ spthd SFO,
rest barren, NO Od.

Sh: Black Carb

3400

LS: wht, Fu xln, dms. 1-2
rx w/ 1/2 stn, NSFO, NO Od.

LS: wht-1/2 tan, mid xln, dalam
w/ few foss. gd int xln, 3-4 rx
w/ gd sat + frsfo, 3-4 rx w/ dk
blk stn, Fr Od.

LS: wht, Fu-vFu xln, v
dms, NO visk, Totally
barren. Seat torn
chnto.

Sh: Black Carb

50

LS: wht-1/2 tan, mid xln, Fr
vugx, sltly tite. 2-3 rx w/
Fr stn + spthd SFO, 1/2 Fr Od.

LS: wht, Fu xln, mostly dms,
prx, NS.

Sh: dk 5/2
LS: wht-1/2 tan, mid xln, seat resp.

Vis: 47 Lt: 8.8

Ost #1

3437-3498

45-45-45-45

I.F. - 5 3/4" blow

F.F. - 5" blow

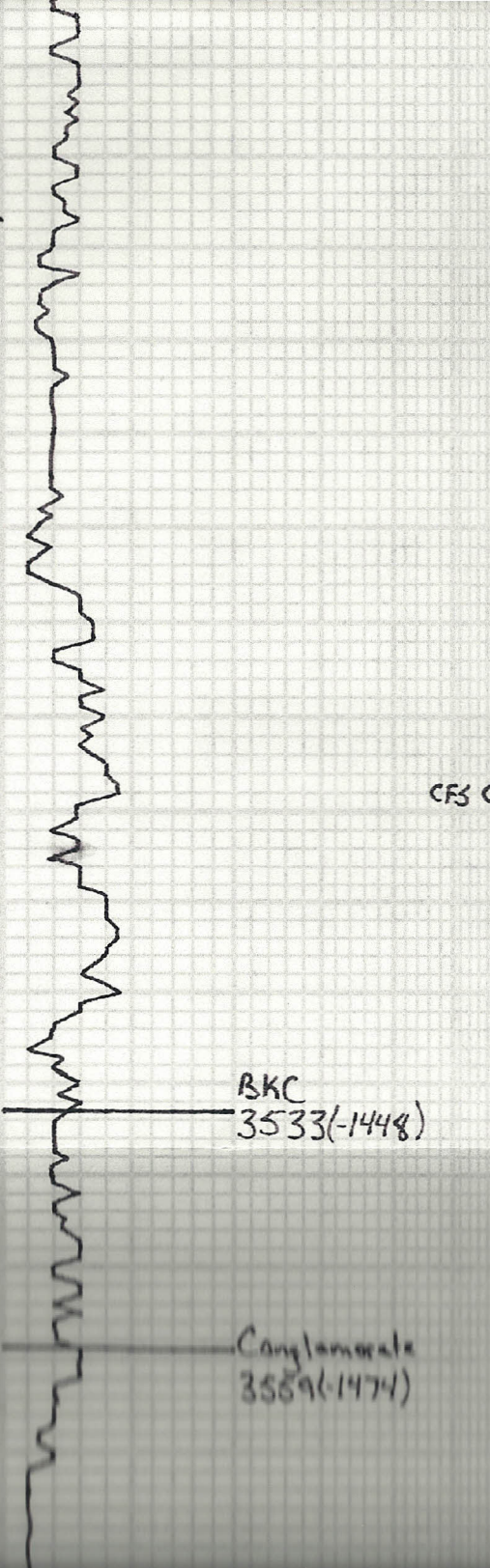
IFP: 16-63

FFP: 65-105

SIP: 651-622

HP: 1696-1666

Rec:



50

50

CFS @ 3500

BKC
3533(-1448)

Conglomerate
3589(-1474)

D
S
T

1

LS: wht, Fu-vFu xln, v
dms, No vis, Totally
barren. Seat torn
into.

Sh: Black Carb

LS: wht-lt tan, md xln, Fr
vugs, sltly tite. 2-3 rx w/
Fr str + spttd SFO, lt-Fr Od.

LS: wht, Fu xln, mostly dms,
ppx, No.

Sh: drk gr
LS: wht-lt tan, md xln, seat foss.
Fr-gd vugs w/ gd sat str, Fr-gd
SFO. Fr Amt subxln - chunky ex. lt-
Fr Od, 1-2 drops free oil on exp.

Sh: brn-gr
LS: wht-lt tan, sltly dms w/
few foss, pr-Fr int foss + ppx,
lt brn str, rare spttd SFO, Fr
Od.

Sh: Black Carb

LS: wht, Fu xln, mostly dms
+ barren. 2-3 rx w/ Fr str +
spttd SFO in pr ppx, v dms mtr
lt Od.

Sh: Black Carb

LS: wht, Fu-md xln, mostly sub
xln, 2-3 rx w/ spttd SFO, No Od,
mostly barren.

Sh: gr

LS: wht, Fu-md xln, pr ppx w/
Fr str, spttd SFO, No Od.

Sh: gr

LS: wht, Fu-vFu xln, subxln
in prt. 2-3 rx w/ Fr str w/ vug
SFO, few foss, lt-Fr Od.

LS: few pct AIA, frng barren

Fr amt wht shp + fresh
str. Seat alternate

Vis: 47 Wt: 8.8

Ost #1

3437-3498

45-45-45-45

I.F. - 5 3/4" blow

F.F. - 5" blow

I.F.P. - 14-43

F.F.P. - 65-105

S.I.P. - 651-622

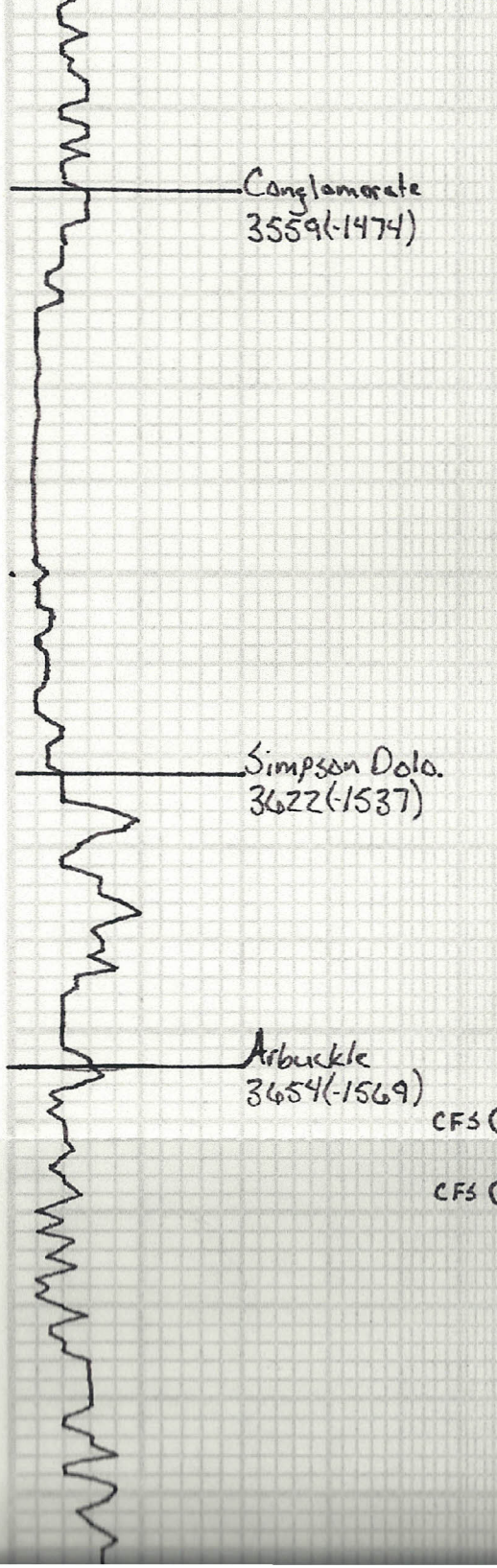
H.P. - 1696-1666

Rec:

67' sacm 5%o

124' sacum 5%o, 45%w

BHT: 101° Chlor: 32K



Conglomerate
3559-1474

Simpson Dolo.
3622-1537

Arbuckle
3654-1569

CFS ⊙

CFS ⊙

50

3600

50

3700

Sh: grg
LS: wht, Fu-mnd xln, pr pps w/ Fr str, settl SFO, No Od.
Sh: grg
LS: wht, Fu-vfn xln, sub xln in prt. 2-3 ex w/ Fr str wavy SFO, Few Fass, It-Fnt Od.
LS: Few pcs AIA, trng barren
Fr amt wht shp + fresh chrt, Scat gilsonite str in chrt, All NSFO, No Od.

0
5
7

2

Dolo: wht-clr, Fu-mnd suc xln, Fr-gd int xln w/ gd vng & some total sat w/ gd-vgd SFO, stly vng, Fnt Od.
Sh: grg
LS: tom, Fu xln, Few pcs dirty SS, Fr sort, sub ind, NS.
Sh: much grg w/ Fr amt foug.
Dolo: tan-wht, Fu-vfn suc xln, gd int xln, vgd sat w/ gd SFO, Trng and Fr vng, gd stue SFO, It Od, Much str.
Dolo: tan, Fu-rich xln w/ scat suc ex, 5-4 ex w/ Fr-gd vngs, tite vngs, gd sat w/ gd SFO, some w/ oil filled vngs, Fr-gd Od.
Dolo: tan, trng md rhom xln, gd int chrt w/ sm/ vngs, gd sat str w/ gd SFO, Fr-gd Od.
Dolo: Trng wht, Fu-mnd rhom xln, suc in prt. Fr Amt chky ex, mostly barren, Fnt Od.
Dolo: wht, Fu-mnd rhom xln, mostly tite w/ prs. Fr amt wht chrt, Mostly barren.

Via: 49 Wt: 9.2
DST # 2
3600-3660
15-30-15-12
I.F.: 1/4", died 15 min
F.F.: Few bubbles
I.F.P.: 16-19
F.F.P.: 19-19
SIP: 583-175
HP: 1809-1749
Rec:
5' mud
BHT: 98°

CFS ⊙

3700

CTCH ⊙

50

RTD: 3737(-1652)
LTD: 3738(-1653)

5-4 rx ul Fr-gd vngs, fite vntx. gd sat
ul gd sfo, same ul oil filled vngs,
Fr-gd Od.

Dala: tan, tung mid rhom xln, gd
intchgd ul sm/ vngs. gd sat etn ul
gd sfo, Fr-gd Od.

Dala: Tung wht, fu-ud rhom
xln, sac in prt. Fr Amt chky
rx, mostly barren, Fut Od.

Dala: wht, fu-ud rhom xln,
mostly fite ul prs. Fr amt
wht chfo, Mostly barren.
Rx ul pink hue in prt.

Dala: wht, mid. crs rhom xln,
scat gd vngs, barren.

Dala: wht tan, tung gd vngs,
scat sfo in s, Fut-H Od.

Mander