



DRILL STEM TEST REPORT

Prepared For: **TDI Inc**

1310 Bison RD
Hays KS 67601

ATTN: Herb Deines

Harold #1

31-14s-19w Ellis KS

Start Date: 2012.06.13 @ 11:42:00

End Date: 2012.06.14 @ 07:42:30

Job Ticket #: 47194 DST #: 1

Trilobite Testing, Inc
PO Box 362 Hays, KS 67601
ph: 785-625-4778 fax: 785-625-5620

Printed: 2012.06.18 @ 16:03:36



TRILOBITE TESTING, INC.

DRILL STEM TEST REPORT

TDI Inc
 1310 Bison RD
 Hays KS 67601
 ATTN: Herb Deines

31-14s-19w Ellis KS
Harold #1
 Job Ticket: 47194 **DST#: 1**
 Test Start: 2012.06.13 @ 11:42:00

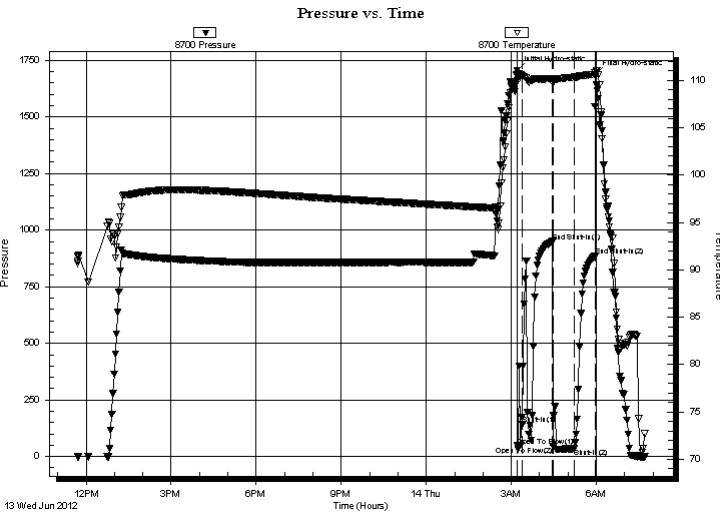
GENERAL INFORMATION:

Formation: **KC "C"**
 Deviated: No Whipstock: ft (KB)
 Time Tool Opened: 03:13:00
 Time Test Ended: 07:42:30
 Interval: **3406.00 ft (KB) To 3430.00 ft (KB) (TVD)**
 Total Depth: 3406.00 ft (KB) (TVD)
 Hole Diameter: 7.88 inches Hole Condition: Fair
 Test Type: Conventional Bottom Hole (Initial)
 Tester: Cody Bloedorn
 Unit No: 42
 Reference Elevations: 2092.00 ft (KB)
 2087.00 ft (CF)
 KB to GR/CF: 5.00 ft

Serial #: 8700 Outside

Press @ Run Depth: 34.29 psig @ 3407.00 ft (KB) Capacity: 8000.00 psig
 Start Date: 2012.06.13 End Date: 2012.06.14 Last Calib.: 2012.06.14
 Start Time: 11:42:05 End Time: 07:42:29 Time On Btm: 2012.06.14 @ 03:12:00
 Time Off Btm: 2012.06.14 @ 05:58:00

TEST COMMENT: 30 - IF- 3 1/2" Blow
 45 - IS- No blow back
 45 - FF- No blow for 9 Min, then surface blow throughout.
 45 - FS- No blow back



PRESSURE SUMMARY

Time (Min.)	Pressure (psig)	Temp (deg F)	Annotation
0	1705.75	109.96	Initial Hydro-static
1	47.19	109.90	Open To Flow (1)
12	141.69	110.38	Shut-In(1)
75	949.68	110.20	End Shut-In(1)
76	43.99	109.65	Open To Flow (2)
120	34.29	110.33	Shut-In(2)
165	884.42	110.63	End Shut-In(2)
166	1685.35	110.88	Final Hydro-static

Recovery

Length (ft)	Description	Volume (bbl)
45.00	VSOCM, 2%O, 98%M	0.63

Gas Rates

Choke (inches)	Pressure (psig)	Gas Rate (Mcf/d)



TRILOBITE TESTING, INC.

DRILL STEM TEST REPORT

TDI Inc
 1310 Bison RD
 Hays KS 67601
 ATTN: Herb Deines

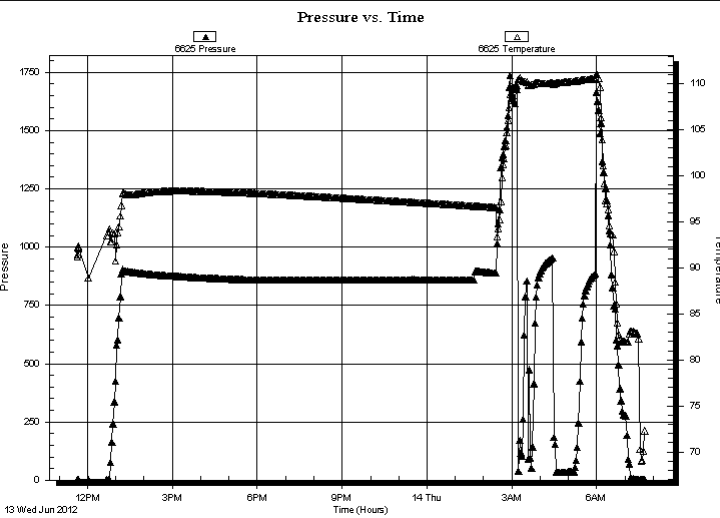
31-14s-19w Ellis KS
Harold #1
 Job Ticket: 47194 **DST#: 1**
 Test Start: 2012.06.13 @ 11:42:00

GENERAL INFORMATION:

Formation: **KC "C"**
 Deviated: No Whipstock: ft (KB)
 Time Tool Opened: 03:13:00
 Time Test Ended: 07:42:30
Interval: 3406.00 ft (KB) To 3430.00 ft (KB) (TVD)
 Total Depth: 3406.00 ft (KB) (TVD)
 Hole Diameter: 7.88 inches Hole Condition: Fair
 Test Type: Conventional Bottom Hole (Initial)
 Tester: Cody Bloedorn
 Unit No: 42
 Reference Elevations: 2092.00 ft (KB)
 2087.00 ft (CF)
 KB to GR/CF: 5.00 ft

Serial #: 6625 Inside
 Press @ Run Depth: psig @ 3407.00 ft (KB) Capacity: 8000.00 psig
 Start Date: 2012.06.13 End Date: 2012.06.14 Last Calib.: 2012.06.14
 Start Time: 11:39:05 End Time: 07:43:29 Time On Btm:
 Time Off Btm:

TEST COMMENT: 30 - IF- 3 1/2" Blow
 45 - IS- No blow back
 45 - FF- No blow for 9 Min, then surface blow throughout.
 45 - FS- No blow back



PRESSURE SUMMARY			
Time (Min.)	Pressure (psig)	Temp (deg F)	Annotation

Recovery		
Length (ft)	Description	Volume (bbl)
45.00	V SOCM, 2%O, 98%M	0.63

Gas Rates			
	Choke (inches)	Pressure (psig)	Gas Rate (Mcf/d)



**TRILOBITE
TESTING, INC.**

DRILL STEM TEST REPORT

TOOL DIAGRAM

TDI Inc
1310 Bison RD
Hays KS 67601
ATTN: Herb Deines

31-14s-19w Ellis KS
Harold #1
Job Ticket: 47194 **DST#: 1**
Test Start: 2012.06.13 @ 11:42:00

Tool Information

Drill Pipe:	Length: 3411.00 ft	Diameter: 3.80 inches	Volume: 47.85 bbl	Tool Weight:	2000.00 lb
Heavy Wt. Pipe:	Length: 0.00 ft	Diameter: 0.00 inches	Volume: 0.00 bbl	Weight set on Packer:	25000.00 lb
Drill Collar:	Length: 0.00 ft	Diameter: 0.00 inches	Volume: 0.00 bbl	Weight to Pull Loose:	44000.00 lb
			<u>Total Volume: 47.85 bbl</u>	Tool Chased	12.00 ft
Drill Pipe Above KB:	26.00 ft			String Weight: Initial	40000.00 lb
Depth to Top Packer:	3406.00 ft			Final	40000.00 lb
Depth to Bottom Packer:	ft				
Interval between Packers:	24.00 ft				
Tool Length:	45.00 ft				
Number of Packers:	2	Diameter: 6.75 inches			

Tool Comments:

Tool Description	Length (ft)	Serial No.	Position	Depth (ft)	Accum. Lengths
Change Over Sub	1.00			3386.00	
Shut In Tool	5.00			3391.00	
Hydraulic tool	5.00			3396.00	
Packer	5.00			3401.00	21.00 Bottom Of Top Packer
Packer	5.00			3406.00	
Stubb	1.00			3407.00	
Recorder	0.00	6625	Inside	3407.00	
Recorder	0.00	8700	Outside	3407.00	
Perforations	20.00			3427.00	
Bullnose	3.00			3430.00	24.00 Bottom Packers & Anchor
Total Tool Length:	45.00				



**TRILOBITE
TESTING, INC.**

DRILL STEM TEST REPORT

FLUID SUMMARY

TDI Inc **31-14s-19w Ellis KS**
 1310 Bison RD **Harold #1**
 Hays KS 67601 Job Ticket: 47194 **DST#: 1**
 ATTN: Herb Deines Test Start: 2012.06.13 @ 11:42:00

Mud and Cushion Information

Mud Type: Gel Chem	Cushion Type:	Oil API:	deg API
Mud Weight: 9.00 lb/gal	Cushion Length: ft	Water Salinity:	ppm
Viscosity: 53.00 sec/qt	Cushion Volume: bbl		
Water Loss: 6.79 in ³	Gas Cushion Type:		
Resistivity: ohm.m	Gas Cushion Pressure: psig		
Salinity: 3100.00 ppm			
Filter Cake: inches			

Recovery Information

Recovery Table

Length ft	Description	Volume bbl
45.00	VSOCM, 2%O, 98%M	0.631

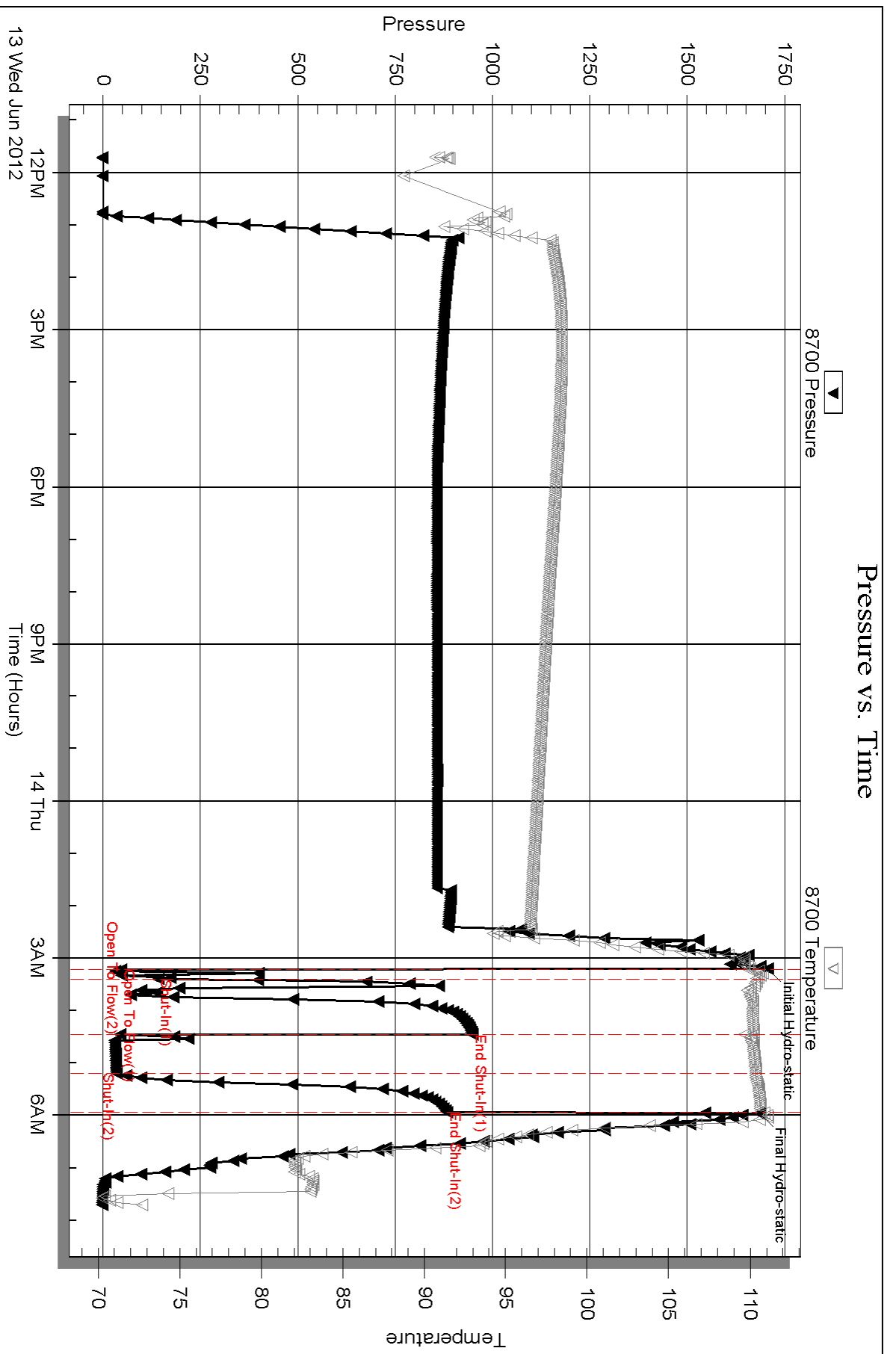
Total Length: 45.00 ft Total Volume: 0.631 bbl

Num Fluid Samples: 0 Num Gas Bombs: 0 Serial #:

Laboratory Name: Laboratory Location:

Recovery Comments: ***Rig Broke down in the middle of going in the hole with the tool***

Suppose to be on @ 11 A.M. on 6-13-12, Rig broke down going into hole. Got started again @ 2:30 A.M. on 6-14-12. Finished test at 7:46 A.M. on 6-14-12. 9 hrs for test and 13 Hrs of Hourly Standby time.



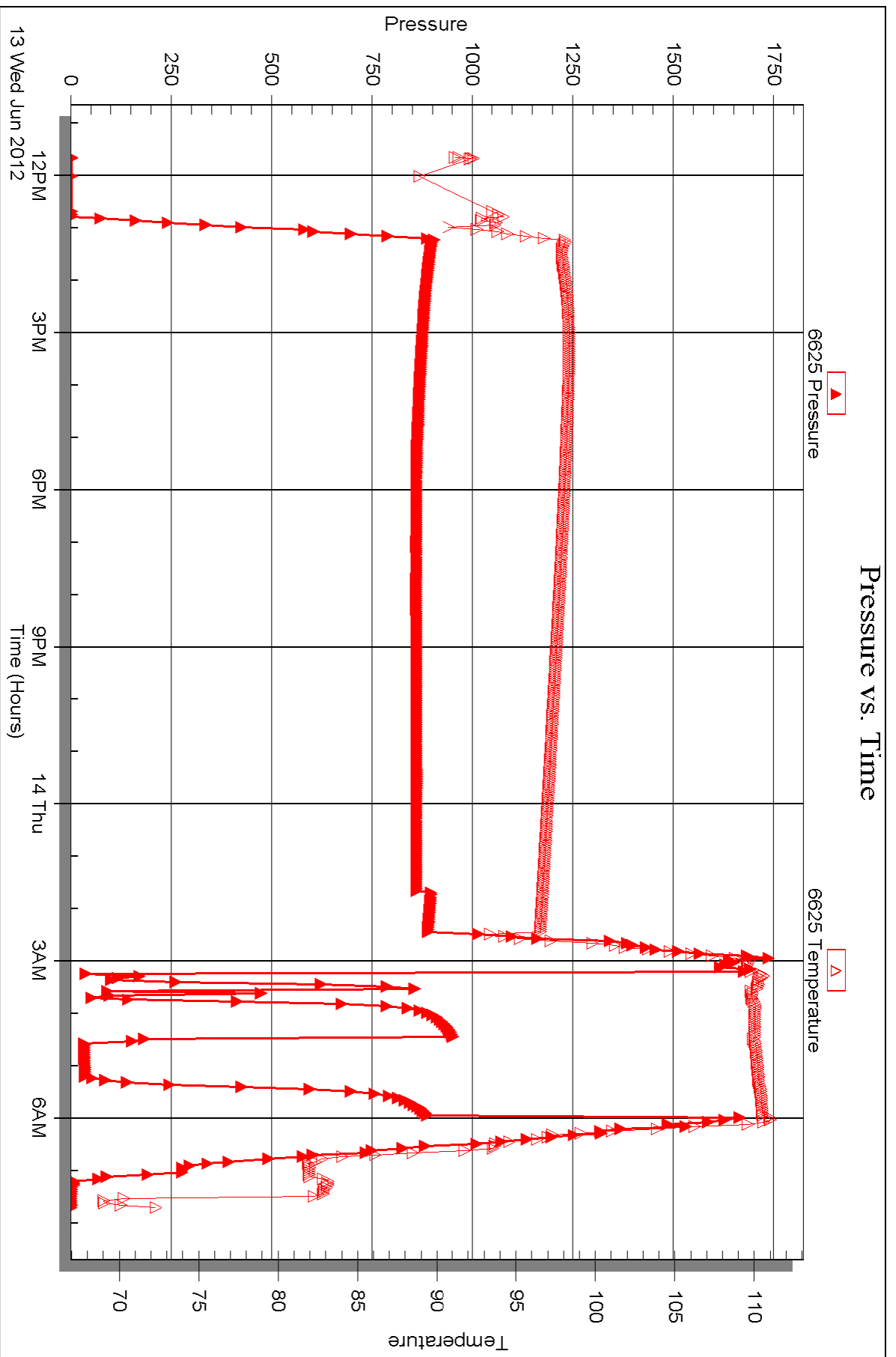
Serial #: 6625

Inside

TDI Inc

Harold #1

DST Test Number: 1





DRILL STEM TEST REPORT

Prepared For: **TDI Inc**

1310 Bison RD
Hays KS 67601

ATTN: Herb Deines

Harold #1

31-14s-19w Ellis KS

Start Date: 2012.06.14 @ 14:06:00

End Date: 2012.06.14 @ 22:01:30

Job Ticket #: 47195 DST #: 2

Trilobite Testing, Inc
PO Box 362 Hays, KS 67601
ph: 785-625-4778 fax: 785-625-5620

Printed: 2012.06.18 @ 16:02:55

TDI Inc
31-14s-19w Ellis KS
Harold #1
DST # 2
KC "C-F"
2012.06.14



**TRILOBITE
TESTING, INC.**

DRILL STEM TEST REPORT

TDI Inc
1310 Bison RD
Hays KS 67601
ATTN: Herb Deines

31-14s-19w Ellis KS
Harold #1
Job Ticket: 47195 **DST#: 2**
Test Start: 2012.06.14 @ 14:06:00

GENERAL INFORMATION:

Formation: **KC "C-F"**
 Deviated: No Whipstock: ft (KB)
 Time Tool Opened: 16:18:30
 Time Test Ended: 22:01:30
 Interval: **3404.00 ft (KB) To 3460.00 ft (KB) (TVD)**
 Total Depth: 3460.00 ft (KB) (TVD)
 Hole Diameter: 7.88 inches Hole Condition: Fair
 Test Type: Conventional Bottom Hole (Reset)
 Tester: Cody Bloedorn
 Unit No: 42
 Reference Elevations: 2092.00 ft (KB)
 2087.00 ft (CF)
 KB to GR/CF: 5.00 ft

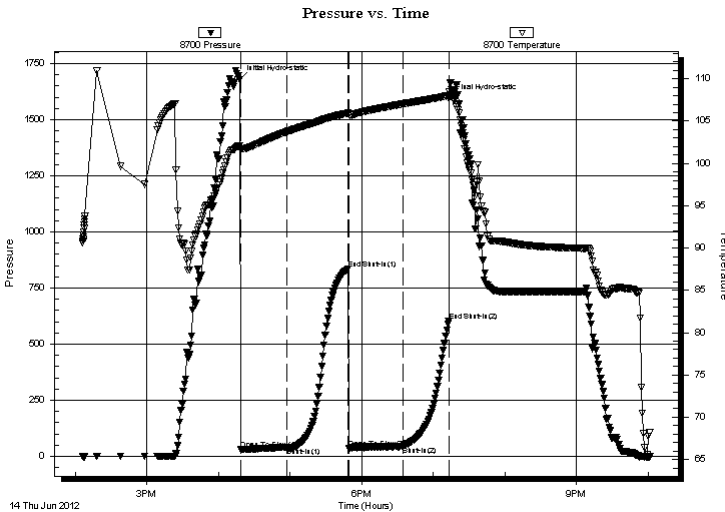
Serial #: 8700

Outside

Press @ Run Depth: 45.78 psig @ 3441.00 ft (KB) Capacity: 8000.00 psig
 Start Date: 2012.06.14 End Date: 2012.06.14 Last Calib.: 2012.06.14
 Start Time: 14:06:05 End Time: 22:01:29 Time On Btm: 2012.06.14 @ 16:18:00
 Time Off Btm: 2012.06.14 @ 19:13:30

TEST COMMENT: 45 - IF- Surface blow
 45 - IS- No blow back
 45 - FF- 1/4" blow
 45 - FS- No blow back

PRESSURE SUMMARY



Time (Min.)	Pressure (psig)	Temp (deg F)	Annotation
0	1677.89	102.08	Initial Hydro-static
1	30.24	101.55	Open To Flow (1)
39	40.58	103.74	Shut-In(1)
91	835.34	105.93	End Shut-In(1)
92	34.75	105.75	Open To Flow (2)
137	45.78	107.03	Shut-In(2)
175	601.63	108.03	End Shut-In(2)
176	1594.52	108.46	Final Hydro-static

Recovery

Length (ft)	Description	Volume (bbl)
30.00	Mud -Oil scum, 100%M	0.42

* Recovery from multiple tests

Gas Rates

Choke (inches)	Pressure (psig)	Gas Rate (Mcf/d)



TRILOBITE
TESTING, INC.

DRILL STEM TEST REPORT

TDI Inc
1310 Bison RD
Hays KS 67601
ATTN: Herb Deines

31-14s-19w Ellis KS
Harold #1
Job Ticket: 47195 **DST#: 2**
Test Start: 2012.06.14 @ 14:06:00

GENERAL INFORMATION:

Formation: KC "C-F"		
Deviated: No Whipstock:	ft (KB)	Test Type: Conventional Bottom Hole (Reset)
Time Tool Opened: 16:18:30		Tester: Cody Bloedorn
Time Test Ended: 22:01:30		Unit No: 42
Interval: 3404.00 ft (KB) To 3460.00 ft (KB) (TVD)		Reference Elevations: 2092.00 ft (KB)
Total Depth: 3460.00 ft (KB) (TVD)		2087.00 ft (CF)
Hole Diameter: 7.88 inches	Hole Condition: Fair	KB to GR/CF: 5.00 ft

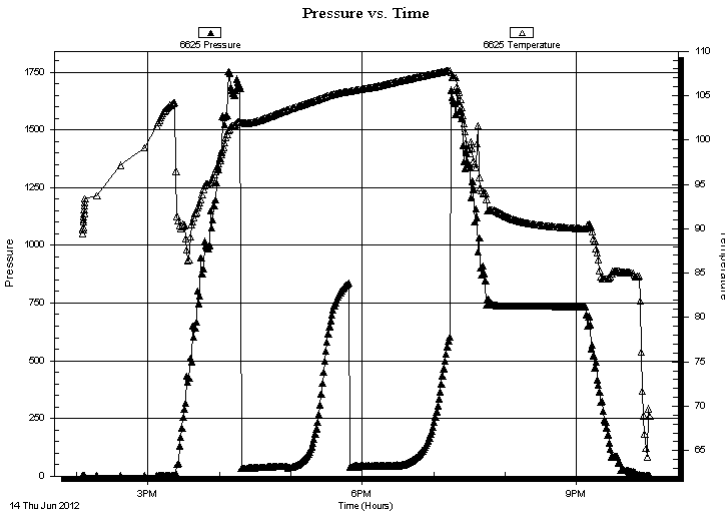
Serial #: 6625

Inside

Press @ Run Depth:	psig @	3441.00 ft (KB)	Capacity:	8000.00 psig
Start Date:	2012.06.14	End Date:	2012.06.14	Last Calib.:
Start Time:	14:05:05	End Time:	22:01:59	Time On Btm:
				Time Off Btm:

TEST COMMENT:
45 - IF- Surface blow
45 - IS- No blow back
45 - FF- 1/4" blow
45 - FS- No blow back

PRESSURE SUMMARY



Time (Min.)	Pressure (psig)	Temp (deg F)	Annotation

Recovery

Length (ft)	Description	Volume (bbl)
30.00	Mud -Oil scum, 100%M	0.42

Gas Rates

Choke (inches)	Pressure (psig)	Gas Rate (Mcf/d)

* Recovery from multiple tests



**TRILOBITE
TESTING, INC.**

DRILL STEM TEST REPORT

TOOL DIAGRAM

TDI Inc
1310 Bison RD
Hays KS 67601
ATTN: Herb Deines

31-14s-19w Ellis KS
Harold #1
Job Ticket: 47195 **DST#: 2**
Test Start: 2012.06.14 @ 14:06:00

Tool Information

Drill Pipe:	Length: 3411.00 ft	Diameter: 3.80 inches	Volume: 47.85 bbl	Tool Weight: 2000.00 lb
Heavy Wt. Pipe:	Length: 0.00 ft	Diameter: 0.00 inches	Volume: 0.00 bbl	Weight set on Packer: 25000.00 lb
Drill Collar:	Length: 0.00 ft	Diameter: 0.00 inches	Volume: 0.00 bbl	Weight to Pull Loose: 44000.00 lb
			<u>Total Volume: 47.85 bbl</u>	Tool Chased 0.00 ft
Drill Pipe Above KB:	28.00 ft			String Weight: Initial 40000.00 lb
Depth to Top Packer:	3404.00 ft			Final 40000.00 lb
Depth to Bottom Packer:	ft			
Interval between Packers:	56.00 ft			
Tool Length:	77.00 ft			
Number of Packers:	2	Diameter: 6.75 inches		

Tool Comments:

Tool Description	Length (ft)	Serial No.	Position	Depth (ft)	Accum. Lengths
-------------------------	--------------------	-------------------	-----------------	-------------------	-----------------------

Change Over Sub	1.00			3384.00	
Shut In Tool	5.00			3389.00	
Hydraulic tool	5.00			3394.00	
Packer	5.00			3399.00	21.00 Bottom Of Top Packer
Packer	5.00			3404.00	
Stubb	1.00			3405.00	
Perforations	4.00			3409.00	
Change Over Sub	1.00			3410.00	
Drill Pipe	31.00			3441.00	
Recorder	0.00	6625	Inside	3441.00	
Recorder	0.00	8700	Outside	3441.00	
Change Over Sub	1.00			3442.00	
Perforations	15.00			3457.00	
Bullnose	3.00			3460.00	56.00 Bottom Packers & Anchor

Total Tool Length: 77.00



**TRILOBITE
TESTING, INC.**

DRILL STEM TEST REPORT

FLUID SUMMARY

TDI Inc **31-14s-19w Ellis KS**
 1310 Bison RD **Harold #1**
 Hays KS 67601 Job Ticket: 47195 **DST#: 2**
 ATTN: Herb Deines Test Start: 2012.06.14 @ 14:06:00

Mud and Cushion Information

Mud Type: Gel Chem	Cushion Type:	Oil API:	deg API
Mud Weight: 9.00 lb/gal	Cushion Length: ft	Water Salinity:	ppm
Viscosity: 54.00 sec/qt	Cushion Volume: bbl		
Water Loss: 6.79 in ³	Gas Cushion Type:		
Resistivity: ohm.m	Gas Cushion Pressure: psig		
Salinity: 3300.00 ppm			
Filter Cake: inches			

Recovery Information

Recovery Table

Length ft	Description	Volume bbl
30.00	Mud -Oil scum, 100%M	0.421

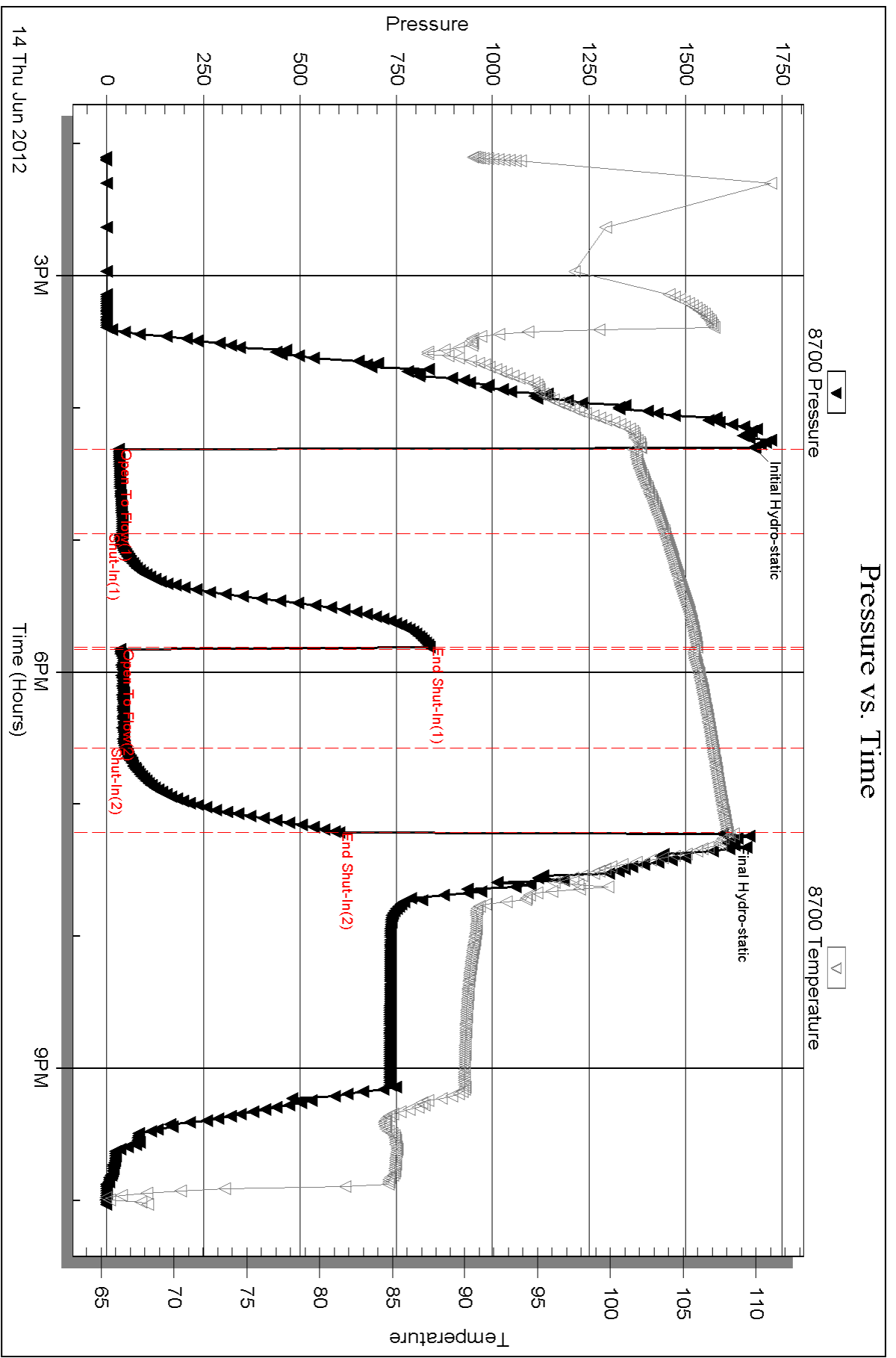
Total Length: 30.00 ft Total Volume: 0.421 bbl
 Num Fluid Samples: 0 Num Gas Bombs: 0 Serial #:
 Laboratory Name: Laboratory Location:
 Recovery Comments:

Serial #: 8700

Outside TDI Inc

Harold #1

DST Test Number: 2



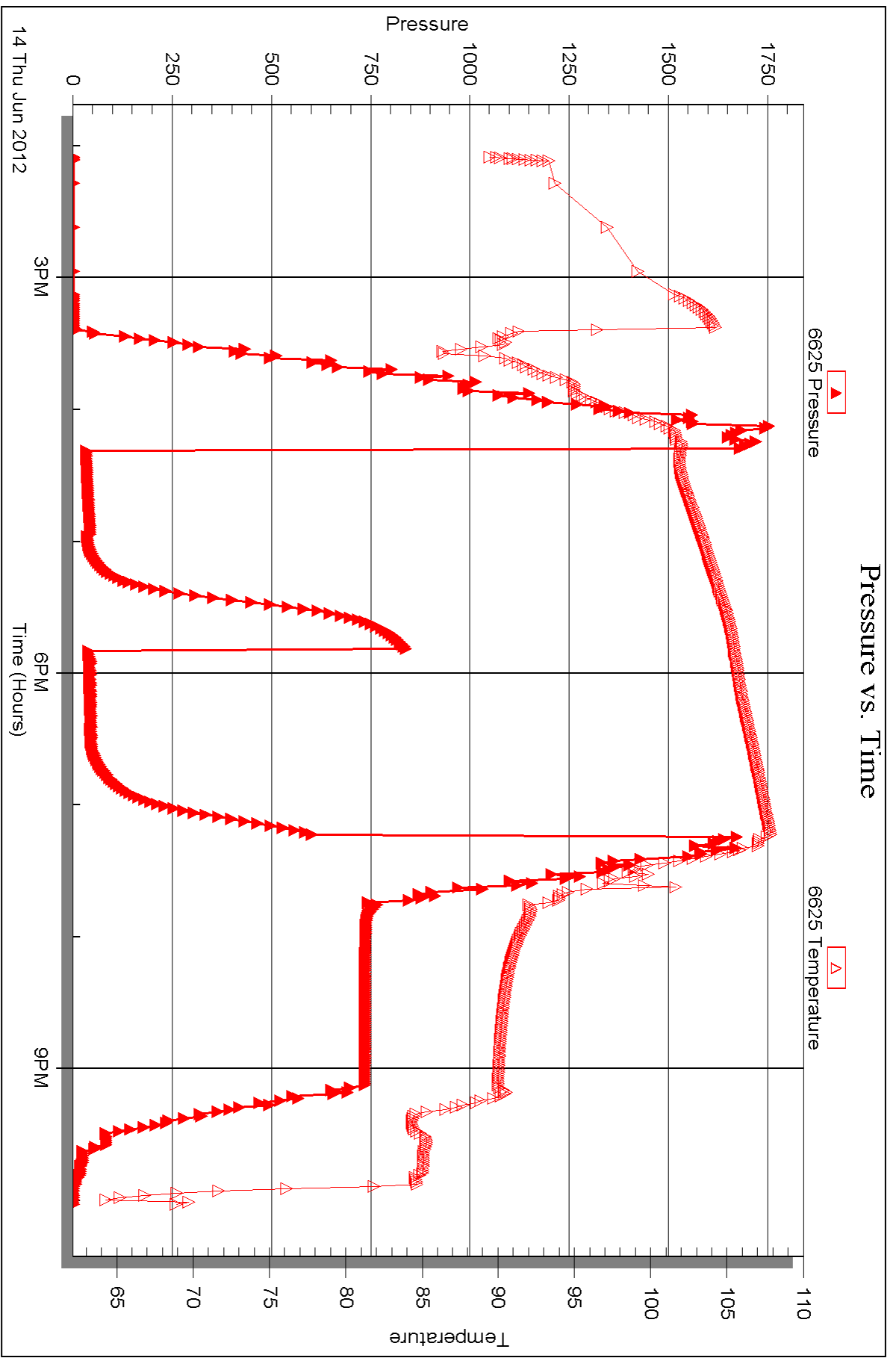
Serial #: 6625

Inside

TDI Inc

Harold #1

DST Test Number: 2



Triobite Testing, Inc

Ref. No: 47195

Printed: 2012.06.18 @ 16:02:58



DRILL STEM TEST REPORT

Prepared For: **TDI Inc**

1310 Bison RD
Hays KS 67601

ATTN: Herb Deines

Harold #1

31-14s-19w Ellis KS

Start Date: 2012.06.15 @ 12:58:00

End Date: 2012.06.15 @ 19:21:30

Job Ticket #: 47196 DST #: 3

Trilobite Testing, Inc
PO Box 362 Hays, KS 67601
ph: 785-625-4778 fax: 785-625-5620

Printed: 2012.06.18 @ 16:02:04

TDI Inc
31-14s-19w Ellis KS
Harold #1
DST # 3
H,I,J
2012.06.15



TRILOBITE TESTING, INC.

DRILL STEM TEST REPORT

TDI Inc
 1310 Bison RD
 Hays KS 67601
 ATTN: Herb Deines

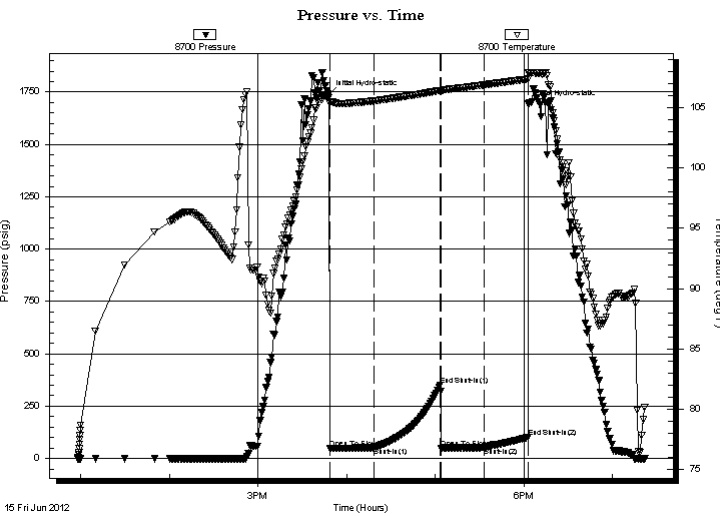
31-14s-19w Ellis KS
Harold #1
 Job Ticket: 47196 **DST#: 3**
 Test Start: 2012.06.15 @ 12:58:00

GENERAL INFORMATION:

Formation: **H,I,J**
 Deviated: No Whipstock: ft (KB)
 Time Tool Opened: 15:48:30
 Time Test Ended: 19:21:30
 Interval: **3503.00 ft (KB) To 3590.00 ft (KB) (TVD)**
 Total Depth: 3590.00 ft (KB) (TVD)
 Hole Diameter: 7.88 inches Hole Condition: Fair
 Test Type: Conventional Bottom Hole (Reset)
 Tester: Cody Bloedorn
 Unit No: 42
 Reference Elevations: 2092.00 ft (KB)
 2087.00 ft (CF)
 KB to GR/CF: 5.00 ft

Serial #: 8700 Outside
 Press @ Run Depth: 53.26 psig @ 3572.00 ft (KB) Capacity: 8000.00 psig
 Start Date: 2012.06.15 End Date: 2012.06.15 Last Calib.: 2012.06.15
 Start Time: 12:58:05 End Time: 19:21:29 Time On Btm: 2012.06.15 @ 15:48:00
 Time Off Btm: 2012.06.15 @ 18:03:00

TEST COMMENT: 30 - IF- 1/4" Blow , died back to surface blow
 45 - IS- No blow back
 30 - FF- 1/4" blow
 30 - FS- No blow back



PRESSURE SUMMARY

Time (Min.)	Pressure (psig)	Temp (deg F)	Annotation
0	1737.64	105.85	Initial Hydro-static
1	47.53	105.37	Open To Flow (1)
31	51.95	105.56	Shut-In(1)
75	349.22	106.41	End Shut-In(1)
76	47.54	106.38	Open To Flow (2)
105	53.26	106.89	Shut-In(2)
135	100.51	107.36	End Shut-In(2)
135	1691.93	107.90	Final Hydro-static

Recovery

Length (ft)	Description	Volume (bbl)
20.00	Mud - Oil Scum, 100%M	0.28

* Recovery from multiple tests

Gas Rates

Choke (inches)	Pressure (psig)	Gas Rate (Mcf/d)



TRILOBITE TESTING, INC.

DRILL STEM TEST REPORT

TDI Inc
1310 Bison RD
Hays KS 67601
ATTN: Herb Deines

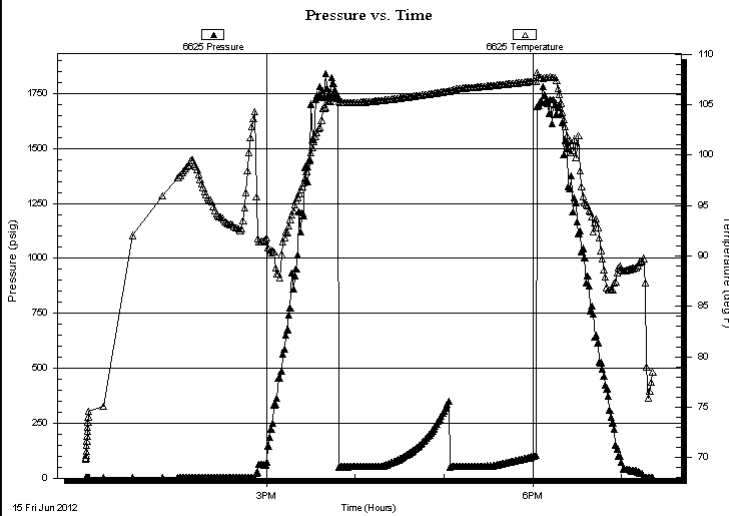
31-14s-19w Ellis KS
Harold #1
Job Ticket: 47196 **DST#: 3**
Test Start: 2012.06.15 @ 12:58:00

GENERAL INFORMATION:

Formation: **H,I,J**
Deviated: No Whipstock: ft (KB)
Time Tool Opened: 15:48:30
Time Test Ended: 19:21:30
Interval: **3503.00 ft (KB) To 3590.00 ft (KB) (TVD)**
Total Depth: 3590.00 ft (KB) (TVD)
Hole Diameter: 7.88 inches Hole Condition: Fair
Reference Elevations: 2092.00 ft (KB)
2087.00 ft (CF)
KB to GR/CF: 5.00 ft
Test Type: Conventional Bottom Hole (Reset)
Tester: Cody Bloedorn
Unit No: 42

Serial #: 6625 Inside
Press @ Run Depth: psig @ 3572.00 ft (KB) Capacity: 8000.00 psig
Start Date: 2012.06.15 End Date: 2012.06.15 Last Calib.: 2012.06.15
Start Time: 12:57:35 End Time: 19:21:29 Time On Btm:
Time Off Btm:

TEST COMMENT: 30 - IF- 1/4" Blow , died back to surface blow
45 - IS- No blow back
30 - FF- 1/4" blow
30 - FS- No blow back



PRESSURE SUMMARY

Time (Min.)	Pressure (psig)	Temp (deg F)	Annotation

Recovery

Length (ft)	Description	Volume (bbl)
20.00	Mud - Oil Scum, 100%M	0.28

Gas Rates

	Choke (inches)	Pressure (psig)	Gas Rate (Mcf/d)

* Recovery from multiple tests



**TRILOBITE
TESTING, INC.**

DRILL STEM TEST REPORT

TOOL DIAGRAM

TDI Inc
1310 Bison RD
Hays KS 67601
ATTN: Herb Deines

31-14s-19w Ellis KS
Harold #1
Job Ticket: 47196 **DST#: 3**
Test Start: 2012.06.15 @ 12:58:00

Tool Information

Drill Pipe:	Length: 3506.00 ft	Diameter: 3.80 inches	Volume: 49.18 bbl	Tool Weight:	2000.00 lb
Heavy Wt. Pipe:	Length: 0.00 ft	Diameter: 0.00 inches	Volume: 0.00 bbl	Weight set on Packer:	25000.00 lb
Drill Collar:	Length: 0.00 ft	Diameter: 0.00 inches	Volume: 0.00 bbl	Weight to Pull Loose:	80000.00 lb
			<u>Total Volume: 49.18 bbl</u>	Tool Chased	0.00 ft
Drill Pipe Above KB:	24.00 ft			String Weight: Initial	40000.00 lb
Depth to Top Packer:	3503.00 ft			Final	40000.00 lb
Depth to Bottom Packer:	ft				
Interval between Packers:	87.00 ft				
Tool Length:	108.00 ft				
Number of Packers:	2	Diameter: 6.75 inches			

Tool Comments:

Tool Description	Length (ft)	Serial No.	Position	Depth (ft)	Accum. Lengths
-------------------------	--------------------	-------------------	-----------------	-------------------	-----------------------

Change Over Sub	1.00			3483.00	
Shut In Tool	5.00			3488.00	
Hydraulic tool	5.00			3493.00	
Packer	5.00			3498.00	21.00 Bottom Of Top Packer
Packer	5.00			3503.00	
Stubb	1.00			3504.00	
Perforations	4.00			3508.00	
Change Over Sub	1.00			3509.00	
Drill Pipe	62.00			3571.00	
Change Over Sub	1.00			3572.00	
Recorder	0.00	6625	Inside	3572.00	
Recorder	0.00	8700	Outside	3572.00	
Perforations	15.00			3587.00	
Bullnose	3.00			3590.00	87.00 Bottom Packers & Anchor

Total Tool Length: 108.00



**TRILOBITE
TESTING, INC.**

DRILL STEM TEST REPORT

FLUID SUMMARY

TDI Inc **31-14s-19w Ellis KS**
 1310 Bison RD **Harold #1**
 Hays KS 67601 Job Ticket: 47196 **DST#: 3**
 ATTN: Herb Deines Test Start: 2012.06.15 @ 12:58:00

Mud and Cushion Information

Mud Type: Gel Chem	Cushion Type:	Oil API:	deg API
Mud Weight: 9.00 lb/gal	Cushion Length: ft	Water Salinity:	ppm
Viscosity: 53.00 sec/qt	Cushion Volume: bbl		
Water Loss: 6.79 in ³	Gas Cushion Type:		
Resistivity: ohm.m	Gas Cushion Pressure: psig		
Salinity: 3500.00 ppm			
Filter Cake: inches			

Recovery Information

Recovery Table

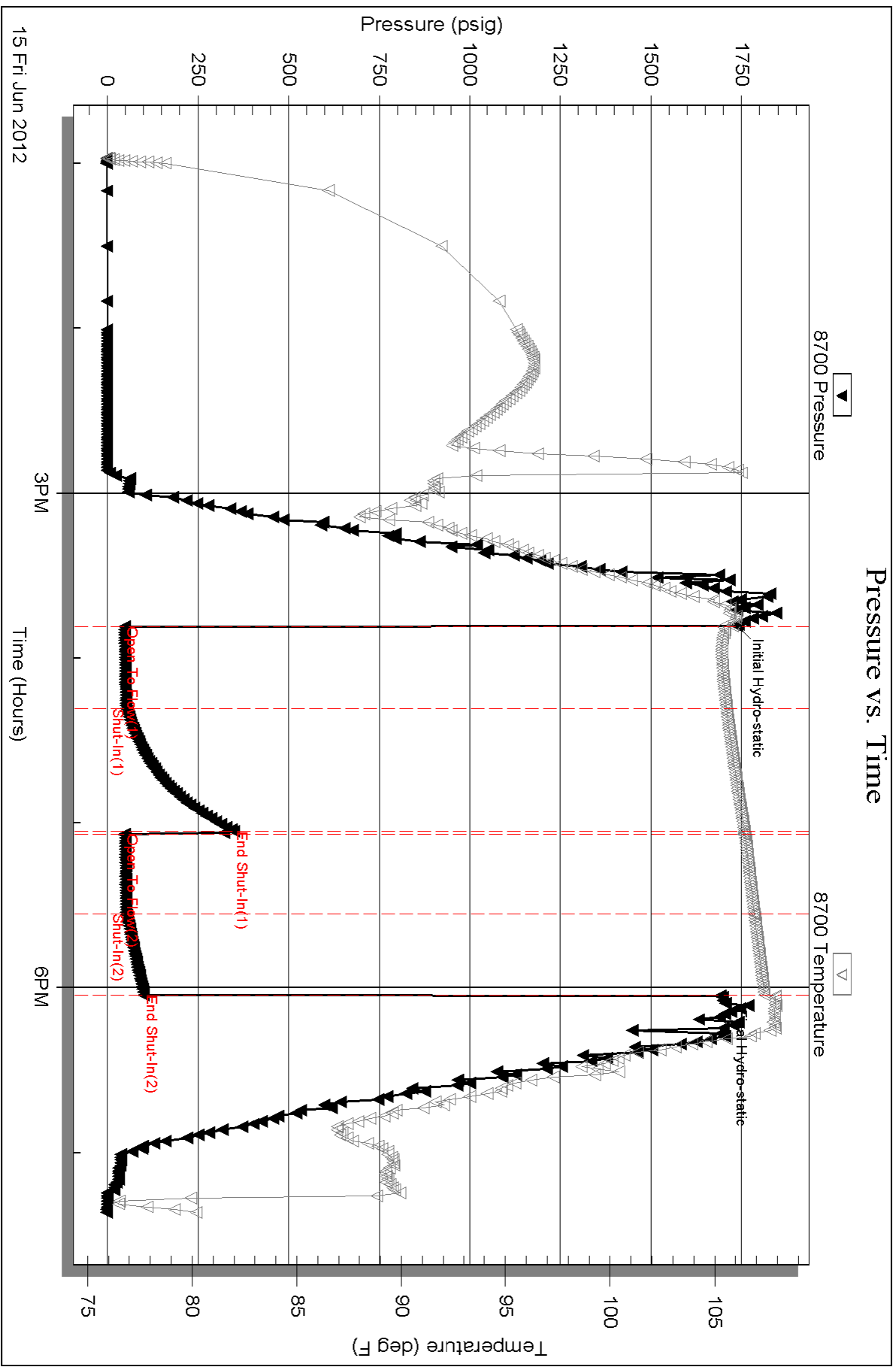
Length ft	Description	Volume bbl
20.00	Mud - Oil Scum, 100%M	0.281

Total Length: 20.00 ft Total Volume: 0.281 bbl

Num Fluid Samples: 0 Num Gas Bombs: 0 Serial #:

Laboratory Name: Laboratory Location:

Recovery Comments: worked on brakes before we went in hole.



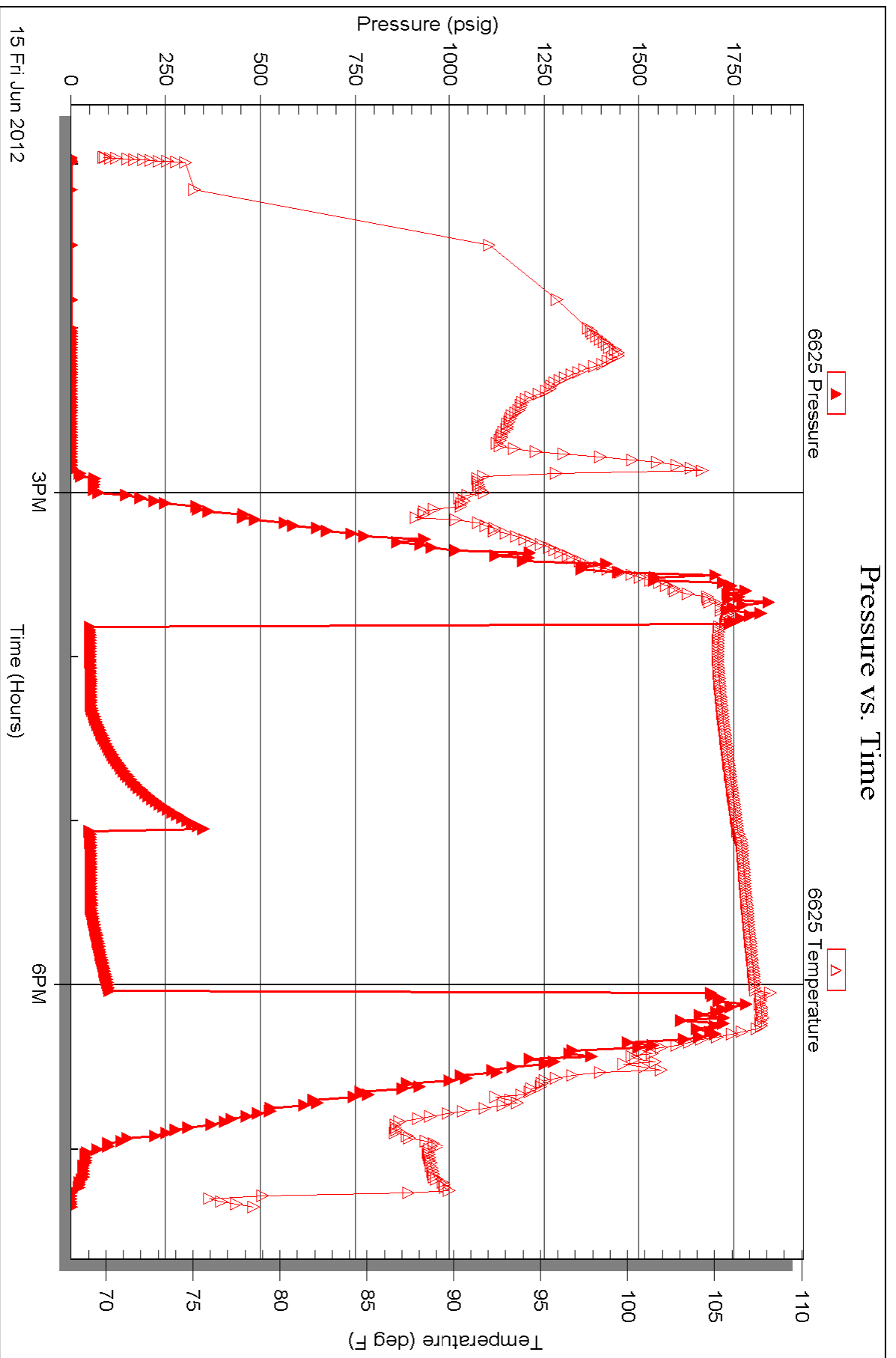
Serial #: 6625

Inside

TDI Inc

Harold #1

DST Test Number: 3





TRILOBITE TESTING INC.

P.O. Box 1733 • Hays, Kansas 67601

Test Ticket

NO. 47194

Well Name & No. Harold #1 Test No. 1 Date 6-13-12
 Company TDI Inc Elevation 2092 KB 2087 GL
 Address 1310 Bison RD, Hays KS, 67601
 Co. Rep / Geo. Herb Rig Southwind #1
 Location: Sec. 31 Twp. 14s Rge. 19w Co. Ellis State KS

Interval Tested 3406 - 3430 Zone Tested "C"
 Anchor Length 24' Drill Pipe Run 3411 Mud Wt. 9.0
 Top Packer Depth 3401 Drill Collars Run — Vis 53
 Bottom Packer Depth 3406 Wt. Pipe Run — WL 6.8
 Total Depth 3430 Chlorides 3,100 ppm System LCM —

Blow Description IF - 3 1/2" blow
ISI - No blow back
FF - No blow for 9 M.m. surface blow
FSI - No blow back.

Rec	Feet of	%gas	%oil	%water	%mud
<u>45</u>	<u>VSOC M</u>	<u>2</u>		<u>98</u>	
Rec	Feet of	%gas	%oil	%water	%mud
Rec	Feet of	%gas	%oil	%water	%mud
Rec	Feet of	%gas	%oil	%water	%mud
Rec	Feet of	%gas	%oil	%water	%mud
Rec Total <u>45</u>	BHT <u>110°</u>	Gravity <u>—</u>	API RW <u>—</u>	@ <u>—</u>	° F Chlorides <u>—</u> ppm

(A) Initial Hydrostatic 1705 Test 1150 T-On Location 9:35 am
 (B) First Initial Flow 47 Jars — T-Started 11:42 am
 (C) First Final Flow 141 Safety Joint — T-Open 3:16 am
 (D) Initial Shut-In 949 Circ Sub — T-Pulled 6:01 am
 (E) Second Initial Flow 43 Hourly Standby +3 hrs ³⁰⁰ T-Out 7:46 am
 (F) Second Final Flow 34 Mileage 20x2 x2 124 Comments *Rig broke down w/tool in hole*
 (G) Final Shut-In 884 Sampler —
 (H) Final Hydrostatic 1685 Straddle — Ruined Shale Packer —
 Shale Packer — Ruined Packer —
 Extra Packer — Extra Copies —
 Extra Recorder — Sub Total 0
 Day Standby — Total 1574
 Accessibility — MP/DST Disc't —
 Sub Total 1574

Approved By _____ Our Representative Cody B

TriLOBite Testing Inc. shall not be liable for damaged of any kind of the property or personnel of the one for whom a test is made, or for any loss suffered or sustained, directly or indirectly, through the use of its equipment, or its statements or opinion concerning the results of any test, tools lost or damaged in the hole shall be paid for at cost by the party for whom the test is made.



TRILOBITE TESTING INC.

P.O. Box 1733 • Hays, Kansas 67601

Test Ticket

NO. 47195

4/10

Well Name & No. Harold #1 Test No. 2 Date 6-14-12
 Company TDI Inc Elevation 2092 KB 2087 GL
 Address 1310 Bison RD, Hays KS, 67601
 Co. Rep / Geo. Herb Rig Southwind #1
 Location: Sec. 31 Twp. 14S Rge. 19W Co. Ellis State KS

Interval Tested 3404-3460 Zone Tested C, D, F
 Anchor Length 56' Drill Pipe Run 3411 Mud Wt. 9.2
 Top Packer Depth 3399 Drill Collars Run — Vis 54
 Bottom Packer Depth 3404 Wt. Pipe Run — WL 6.8
 Total Depth 3460 Chlorides 3,300 ppm System LCM —

Blow Description IF - surface blow
ISI - No blow back
FF - 1/4" blow
FSI - No blow back

Rec	Feet of	%gas	%oil	%water	%mud
<u>30</u>	<u>Mud - Oil Scum</u>				
Rec	Feet of	%gas	%oil	%water	%mud
Rec	Feet of	%gas	%oil	%water	%mud
Rec	Feet of	%gas	%oil	%water	%mud
Rec	Feet of	%gas	%oil	%water	%mud

Rec Total 30' BHT 108° Gravity — API RW — @ — °F Chlorides — ppm

(A) Initial Hydrostatic 1677 Test 1150 T-On Location 1:50pm
 (B) First Initial Flow 30 Jars T-Started 2:06pm
 (C) First Final Flow 40 Safety Joint T-Open 4:20pm
 (D) Initial Shut-In 835 Circ Sub T-Pulled 7:20pm
 (E) Second Initial Flow 34 Hourly Standby T-Out 10:04pm
 (F) Second Final Flow 45 Mileage 20x2 62 Comments
 (G) Final Shut-In 601 Sampler
 (H) Final Hydrostatic 1594 Straddle Ruined Shale Packer

Initial Open 45 Shale Packer Ruined Packer
 Initial Shut-In 45 Extra Packer Extra Copies
 Final Flow 45 Extra Recorder Sub Total 0
 Final Shut-In 45 Day Standby Total 1212
 Accessibility MP/DST Disc't
 Sub Total 1212

Approved By _____ Our Representative Cody B...

TriLOBite Testing Inc. shall not be liable for damaged of any kind of the property or personnel of the one for whom a test is made, or for any loss suffered or sustained, directly or indirectly, through the use of its equipment, or its statements or opinion concerning the results of any test, tools lost or damaged in the hole shall be paid for at cost by the party for whom the test is made.



TRILOBITE TESTING INC.

P.O. Box 1733 • Hays, Kansas 67601

Test Ticket

NO. 47196

4/10

Well Name & No. Harold #1 Test No. 3 Date 6-15-12
 Company TDI Inc Elevation 2092 KB 2087 GL
 Address 1310 Bison RD, Hays KS, 67601
 Co. Rep / Geo. Herb D Rig Southwind #1
 Location: Sec. 31 Twp. 14S Rge. 19W Co. Ellis State KS

Interval Tested 3503-3590 Zone Tested HIJ
 Anchor Length 87' Drill Pipe Run 3506 Mud Wt. 9.2
 Top Packer Depth 3499 Drill Collars Run — Vis 5.3
 Bottom Packer Depth 3503 Wt. Pipe Run — WL 6.8
 Total Depth 3590 Chlorides 3500 ppm System LCM —

Blow Description IF - 1/4" blow, dried back to surface blow
ISI - No blow back
FF - 1/4" blow
FSI - No blow back

Rec	Feet of	%gas	%oil	%water	%mud
<u>20'</u>	<u>Mud - oil scum</u>			<u>100</u>	
Rec	Feet of	%gas	%oil	%water	%mud
Rec	Feet of	%gas	%oil	%water	%mud
Rec	Feet of	%gas	%oil	%water	%mud
Rec	Feet of	%gas	%oil	%water	%mud

Rec Total 20' BHT 100° Gravity — API RW — @ — °F Chlorides — ppm

(A) Initial Hydrostatic <u>1737</u>	<input checked="" type="checkbox"/> Test <u>1150</u>	T-On Location <u>12:39 pm</u>
(B) First Initial Flow <u>47</u>	<input type="checkbox"/> Jars	T-Started <u>12:58 pm</u>
(C) First Final Flow <u>51</u>	<input type="checkbox"/> Safety Joint	T-Open <u>3:50 pm</u>
(D) Initial Shut-In <u>349</u>	<input type="checkbox"/> Circ Sub	T-Pulled <u>6:05 pm</u>
(E) Second Initial Flow <u>47</u>	<input type="checkbox"/> Hourly Standby	T-Out <u>7:23 pm</u>
(F) Second Final Flow <u>53</u>	<input checked="" type="checkbox"/> Mileage <u>20X04</u> 124	Comments <u>Picked up tools @</u>
(G) Final Shut-In <u>100</u>	<input type="checkbox"/> Sampler	<u>6-16-12 @ 4:45 pm</u>
(H) Final Hydrostatic <u>1691</u>	<input type="checkbox"/> Straddle	<input type="checkbox"/> Ruined Shale Packer
Initial Open <u>30</u>	<input type="checkbox"/> Shale Packer	<input type="checkbox"/> Ruined Packer
Initial Shut-In <u>45</u>	<input type="checkbox"/> Extra Packer	<input type="checkbox"/> Extra Copies
Final Flow <u>30</u>	<input type="checkbox"/> Extra Recorder	Sub Total <u>66.67</u>
Final Shut-In <u>30</u>	<input type="checkbox"/> Day Standby 1d 2h	Total <u>1340.67</u>
	<input type="checkbox"/> Accessibility	MP/DST Disc't
	Sub Total <u>1274</u>	

Approved By _____ Our Representative Cody Bly

Trilobite Testing Inc. shall not be liable for damaged of any kind of the property or personnel of the one for whom a test is made, or for any loss suffered or sustained, directly or indirectly, through the use of its equipment, or its statements or opinion concerning the results of any test, tools lost or damaged in the hole shall be paid for at cost by the party for whom the test is made.