

T33S, R7W, 6th P.M.

SGOMI

R 8 W Nail in Asphalt
NAD 27 Kansas South
N: 176855.99
E: 2107849.22
N89°59'19"E - 2684.32' (Meas.)

R 7 W Nail in Asphalt
NAD 27 Kansas South
N: 176867.71
E: 2110533.55
N89°58'53"E - 2640.03' (Meas.)

South Nail in Asphalt
NAD 27 Kansas South
N: 176879.58
E: 2113173.60

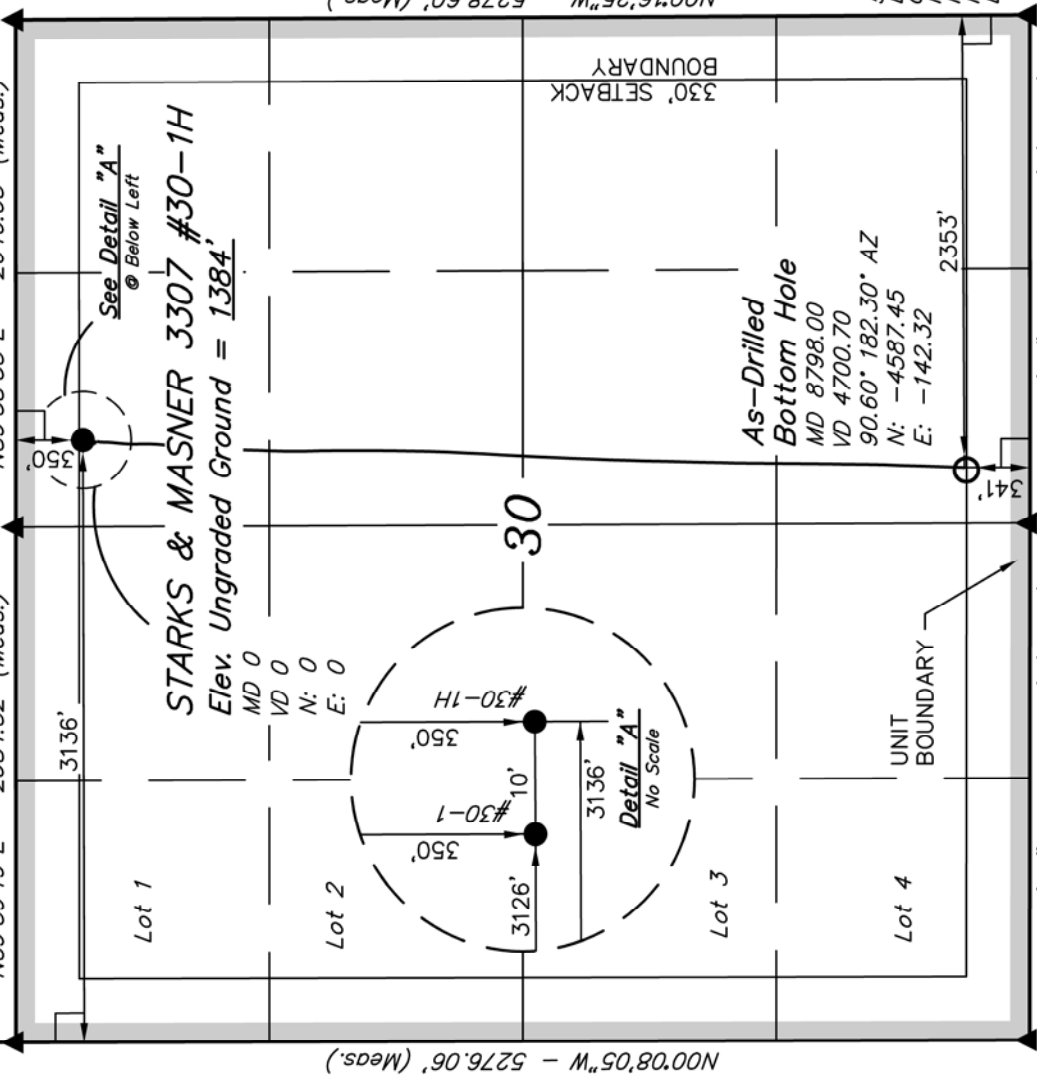
Well location, STARKS & MASNER 3307 #30-1H, located as shown in the NW 1/4 NE 1/4 of Section 30, T33S, R7W, 6th P.M., Harper County, Kansas.

BASIS OF ELEVATION

SPOT ELEVATION LOCATED AT THE NORTHEAST CORNER OF SECTION 22, T33S, R7W, 6th P.M. TAKEN FROM THE ANTHONY, QUADRANGLE, KANSAS, HARPER COUNTY, 7.5 MINUTE QUAD (TOPOGRAPHIC MAP) PUBLISHED BY THE UNITED STATES DEPARTMENT OF THE INTERIOR, GEOLOGICAL SURVEY. SAID ELEVATION IS MARKED AS BEING 1348 FEET.

BASIS OF BEARINGS

BASIS OF BEARINGS IS A G.P.S. OBSERVATION.



N89°57'57"W - 2693.30' (Meas.)

S89°59'19"W - 2643.83' (Meas.)

5/8" Rebar, 0.5' Below Ground, in Gravel Road
NAD 27 Kansas South
N: 171579.91
E: 2107883.60

5/8" Rebar, 0.8' Below Ground, in Gravel Road
NAD 27 Kansas South
N: 171601.08
E: 2113220.79

- LEGEND:**
- = 90° SYMBOL
 - = PROPOSED WELL HEAD.
 - ▲ = SECTION CORNERS LOCATED.

NAD 83 (#30-1H AS DRILLED BOTTOM HOLE)	NAD 83 (#30-1H SURFACE LOCATION)
LATITUDE = 37°08'17.72" (37.138256)	LATITUDE = 37°09'03.08" (37.150856)
LONGITUDE = 98°07'12.15" (98.120042)	LONGITUDE = 98°07'10.40" (98.119556)
NAD 27 (#30-1H AS DRILLED BOTTOM HOLE)	NAD 27 (#30-1H SURFACE LOCATION)
LATITUDE = 37°08'17.64" (37.138233)	LATITUDE = 37°09'02.99" (37.150831)
LONGITUDE = 98°07'10.92" (98.119700)	LONGITUDE = 98°07'09.17" (98.119214)
STATE PLANE NAD 27 (KANSAS SOUTH)	STATE PLANE NAD 27 (KANSAS SOUTH)
N: 171932.09 E: 2110864.21	N: 176520.20 E: 2110987.43

UINTAH ENGINEERING & LAND SURVEYING

85 SOUTH 200 EAST - VERNAL, UTAH 84078
(435) 789-1017

SCALE	DATE SURVEYED:	DATE DRAWN:
1" = 1000'	05-19-12	06-28-12
PARTY	REFERENCES	
L.S. K.H. C.A.G.	G.L.O. PLAT	
WEATHER	FILE	
WARM	SGOMI	



CERTIFICATE
THIS IS TO CERTIFY THAT THE ABOVE PLAT WAS PREPARED FROM FIELD NOTES OF ACTUAL SURVEYS MADE BY ME OR UNDER MY SUPERVISION AND THAT THE SAME ARE TRUE AND CORRECT TO THE BEST OF MY KNOWLEDGE AND BELIEF.