

# Terry McLeod

Consulting Geologist  
 Wichita, Kansas 67201  
 316-265-6431

**GEOLOGIST'S REPORT**  
 DRILLING TIME AND SAMPLE LOGS

OPERATOR: **Rebecca Eshbach-Kane, Inc.**  
 LEASE: **Johnston #1 Well No. 1**  
 FIELD: **Canon Creek Stock Tank**  
 LOCATION: **2100 East E Road, Ft. Riley**  
 COUNTY: **Franklin** STATE: **Kansas**  
 TWP: **26 S** R. 22 W  
 S. 26  
 CORNER: **1/4 Sec. 26**  
 COM. 4370' CUM. 25,622'  
 PROD. 4370' TO 4590'  
 SAMPLER: **3800** TO **8125**  
 SAMPLER SPACING: **3800** TO **8125**  
 GEOLOGICAL SUPERVISION: **21740** TO **8125**  
 WELL UP TO: **8125** TO **8125**

DATE: **8-28-81**  
 MEASUREMENTS ARE ALL FROM **K.B.**  
 CHASING RECORD  
 SURF ELEV. **2328.4**  
 PRODUCTION: **None**

ELECTRICAL SIGNERS  
 SIGNATURE: *[Signature]*  
 PRINT NAME: *[Name]*

FORMATION	THICKNESS	DEPTH	START	STOP	STRENGTH
Blaker	100'	0-100'	0	100	100
Blaker	100'	100-200'	100	200	100
Blaker	100'	200-300'	200	300	100
Blaker	100'	300-400'	300	400	100
Blaker	100'	400-500'	400	500	100
Blaker	100'	500-600'	500	600	100
Blaker	100'	600-700'	600	700	100
Blaker	100'	700-800'	700	800	100
Blaker	100'	800-900'	800	900	100
Blaker	100'	900-1000'	900	1000	100

REFERENCE WELL FOR STRATIGRAPHIC CORRELATION: **Wichita, Kansas**  
 1580' Well # 2220' East, Sec. 2, T. 26 S., R. 22 W.

## DRILL STEM TESTS

WT	DEPTH	TIME	REMARKS
1	100'	1.15	100' mud
2	200'	2.15	200' mud
3	300'	3.15	300' mud
4	400'	4.15	400' mud
5	500'	5.15	500' mud
6	600'	6.15	600' mud
7	700'	7.15	700' mud
8	800'	8.15	800' mud
9	900'	9.15	900' mud
10	1000'	10.15	1000' mud

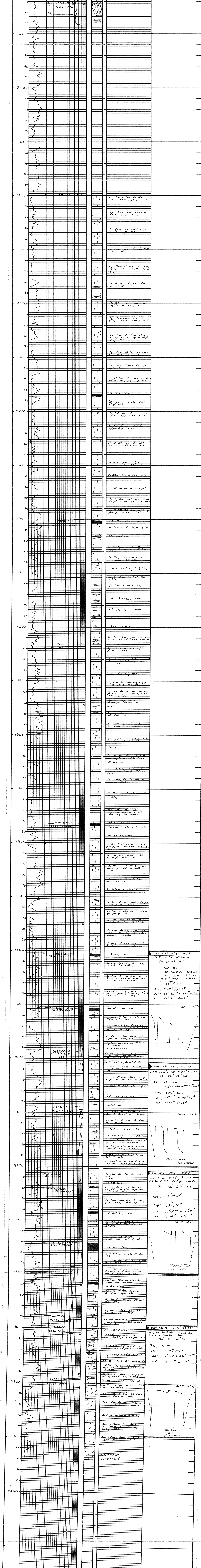
FORMATION	THICKNESS	DEPTH	START	STOP	STRENGTH
Blaker	100'	0-100'	0	100	100
Blaker	100'	100-200'	100	200	100
Blaker	100'	200-300'	200	300	100
Blaker	100'	300-400'	300	400	100
Blaker	100'	400-500'	400	500	100
Blaker	100'	500-600'	500	600	100
Blaker	100'	600-700'	600	700	100
Blaker	100'	700-800'	700	800	100
Blaker	100'	800-900'	800	900	100
Blaker	100'	900-1000'	900	1000	100

REMARKS: *[Handwritten notes regarding well conditions and observations]*

**LEGEND**

[Symbol]	Anhydrite
[Symbol]	Salt
[Symbol]	Sandstone
[Symbol]	Shale
[Symbol]	Carb. sh.
[Symbol]	Limestone
[Symbol]	Ool. Lime
[Symbol]	Chert
[Symbol]	Dolomite

**SCALE** 1" = 100'



DEPTH: 5' 10' 15' 20' 25'  
 DRILLING TIME: Minutes/Foot  
 Rate of Penetration Increases

COMPANY: **Rebecca Eshbach-Kane, Inc.**  
 LEASE: **Johnston #1 Well No. 1**  
 LOCATION: **2100 East E Road, Sec. 2, Twp. 26 S., Rng. 22 W.**  
 COUNTY: **Franklin** STATE: **Kansas**  
 ELEVATION: **2328.4** R.B.