

SGOMI

T34S, R7W, 6th P.M.

Well location, ALBRIGHT CROFT FARM 3407 #15-2H, located as shown in the SW 1/4 SW 1/4 of Section 15, T34S, R7W, 6th P.M., Harper County, Kansas.

BASIS OF ELEVATION

SPOT ELEVATION LOCATED AT THE NORTHEAST CORNER OF SECTION 22, T33S, R7W, 6th P.M. TAKEN FROM THE ANTHONY, QUADRANGLE, KANSAS, HARPER COUNTY, 7.5 MINUTE QUAD (TOPOGRAPHIC MAP) PUBLISHED BY THE UNITED STATES DEPARTMENT OF THE INTERIOR, GEOLOGICAL SURVEY. SAID ELEVATION IS MARKED AS BEING 1348 FEET.

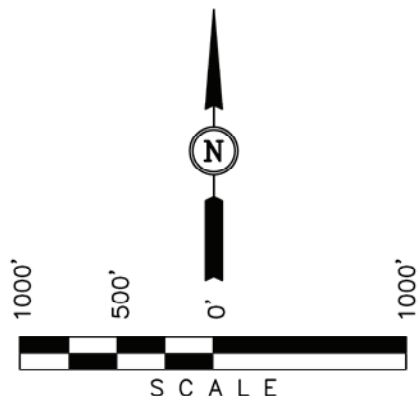
BASIS OF BEARINGS

BASIS OF BEARINGS IS A G.P.S. OBSERVATION.

5/8" Rebar 0.2' Below Ground NAD 27 Kansas South N: 155938.12 E: 2124053.30 S89°57'30"W 2646.93' (Meas.)

5/8" Rebar 0.4' Below Ground, in Gravel Road Intersection NAD 27 Kansas South N: 155965.23 E: 2129353.24

5/8" Rebar 0.5' Below Ground, in Gravel Road Intersection NAD 27 Kansas South N: 155951.10 E: 2126700.29



NW Cor. Sec. 21 Spike, 0.5' Below Ground, in Gravel Road NAD 27 Kansas South N: 150641.25 E: 2118882.28

S89°42'57"W 2624.94' (Meas.)

5/8" Rebar 0.3' High, Fence Post NAD 27 Kansas South N: 150665.23 E: 2121507.20

S89°58'55"W - 2638.83' (Meas.)

5/8" Rebar 0.4' Below Ground, in Gravel Road NAD 27 Kansas South N: 150677.09 E: 2124146.09

485'

ALBRIGHT CROFT FARM 3407 #15-2H

Elev. Ungraded Ground = 1396'

MD 0 - VD 0 N: 0 E: 0

See Detail "A" Below

Section Line Crossing MD 4569.304 VD 4493.99 46.28 181.02° AZ N: -305.12 E: 6.07

Spike, 0.2' Below Ground, in Gravel Road NAD 27 Kansas South N: 150681.74 E: 2129448.39

21

330' SETBACK BOUNDARY

N00°38'57"W - 5218.64' (Meas.)

As-Drilled Bottom Hole MD 6,972.00 VD 4768.71 89.35° 178.25° AZ N: -2369.68 E: 83.67

22

N00°57'17"W - 5251.59' (Meas.)

SW Cor. Sec. 21 5/8" Rebar 0.3' Below Ground, in Gravel Road Intersection NAD 27 Kansas South N: 145470.44 E: 2118978.83

5/8" Rebar, 0.2' Below Ground, in Gravel Road NAD 27 Kansas South N: 145465.00 E: 2121607.99

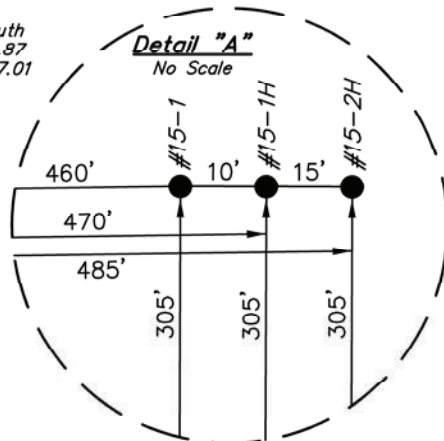
N89°38'31"W 2629.06' (Meas.)

N89°37'36"W - 2618.93' (Meas.)

N89°27'42"W - 5330.69' (Meas.)

PK Nail in Asphalt NAD 27 Kansas South N: 145459.97 E: 2124227.01

5/8" Rebar 0.1' Below Ground, in Asphalt Road NAD 27 Kansas South N: 145431.08 E: 2129557.84



CERTIFICATE

THIS IS TO CERTIFY THAT THE ABOVE PLAT WAS PREPARED FROM FIELD NOTES OF ACTUAL SURVEYS MADE BY ME OR UNDER MY SUPERVISION AND THAT THE SAME ARE TRUE AND CORRECT TO THE BEST OF MY KNOWLEDGE AND BELIEF.

REGISTERED LAND SURVEYOR REGISTRATION NO. 14538 STATE OF KANSAS

LEGEND:

- └─┘ = 90° SYMBOL
● = PROPOSED WELL HEAD.
▲ = SECTION CORNERS LOCATED.

UINTAH ENGINEERING & LAND SURVEYING 85 SOUTH 200 EAST - VERNAL, UTAH 84078 (435) 789-1017

Table with columns for NAD 83 and NAD 27 coordinates, SCALE (1" = 1000'), DATE SURVEYED (05-08-12), DATE DRAWN (06-28-12), PARTY (L.S., K.H., C.A.G.), WEATHER (COOL), and FILE (SGOMI).