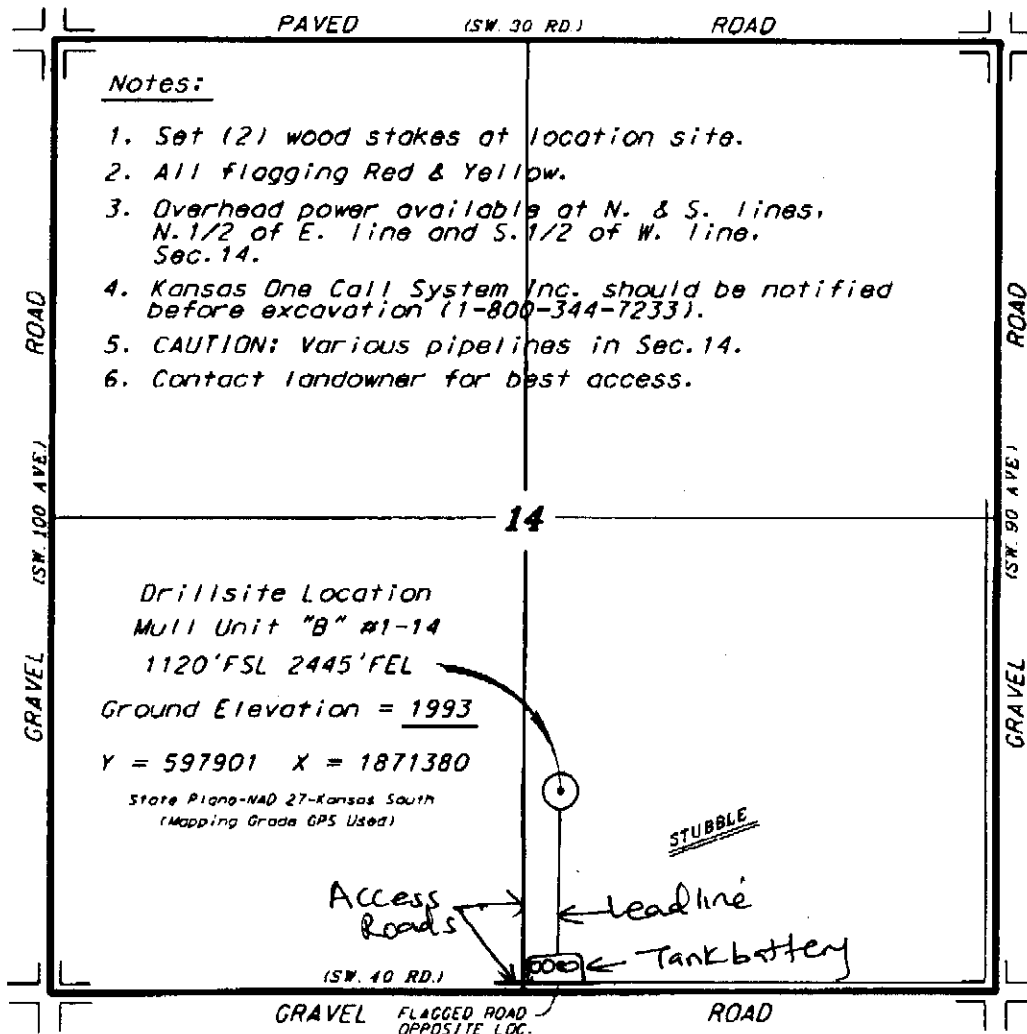


F.G. HOLL COMPANY, LLC
MULL UNIT LEASE
SE. 1/4, SECTION 14, T20S, R15W
BARTON COUNTY, KANSAS



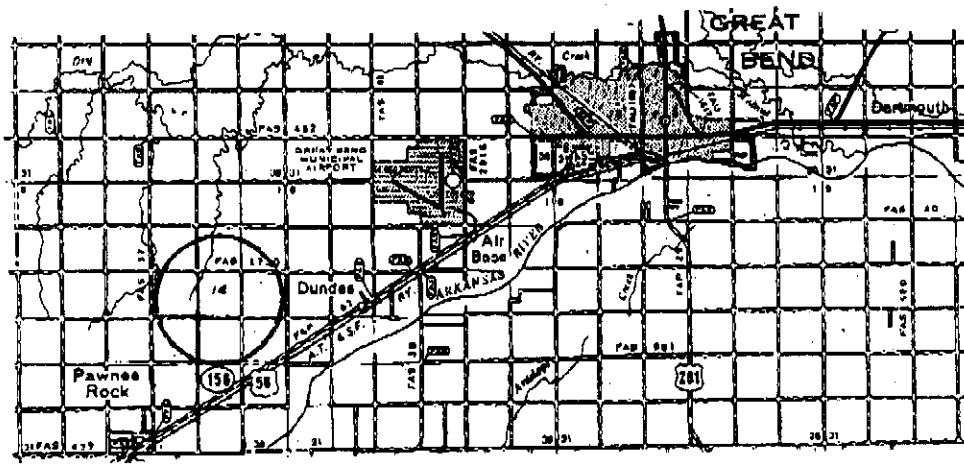
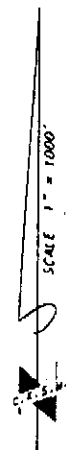
Notes:

1. Set (2) wood stakes at location site.
2. All flagging Red & Yellow.
3. Overhead power available at N. & S. lines, N. 1/2 of E. line and S. 1/2 of W. line, Sec. 14.
4. Kansas One Call System Inc. should be notified before excavation (1-800-344-7233).
5. CAUTION: Various pipelines in Sec. 14.
6. Contact landowner for best access.

14

Drillsite Location
Mull Unit "B" #1-14
1120' FSL 2445' FEL
Ground Elevation = 1993
Y = 597901 X = 1871380
State Plane-NAD 27-Kansas South
(Mapping Grade GPS Used)

Ingress and egress to location as shown on this plat is for usage only and may not be legally opened for public use. Contact landowner, tenant and county road department for access.



* Controlling data is based upon the best maps and photographs available to us and upon a regular section of one containing 640 acres.
 * Approximate section lines were determined using the normal standards of care of oilfield surveyors practicing in the state of Kansas. The section corners, which establish the precise section lines, were not necessarily located, and the exact location of the wellbore location in the section is not guaranteed. Therefore, the operator assuming this service and accepting this plat and all other services relying thereon agrees to hold Central Kansas Oilfield Services, Inc., its officers and employees harmless from all losses, costs and expenses and civil liabilities resulting from any liability from incidental or consequential damage.
 * Elevations derived from National Geodetic Vertical Datum.

Date July 24, 2012