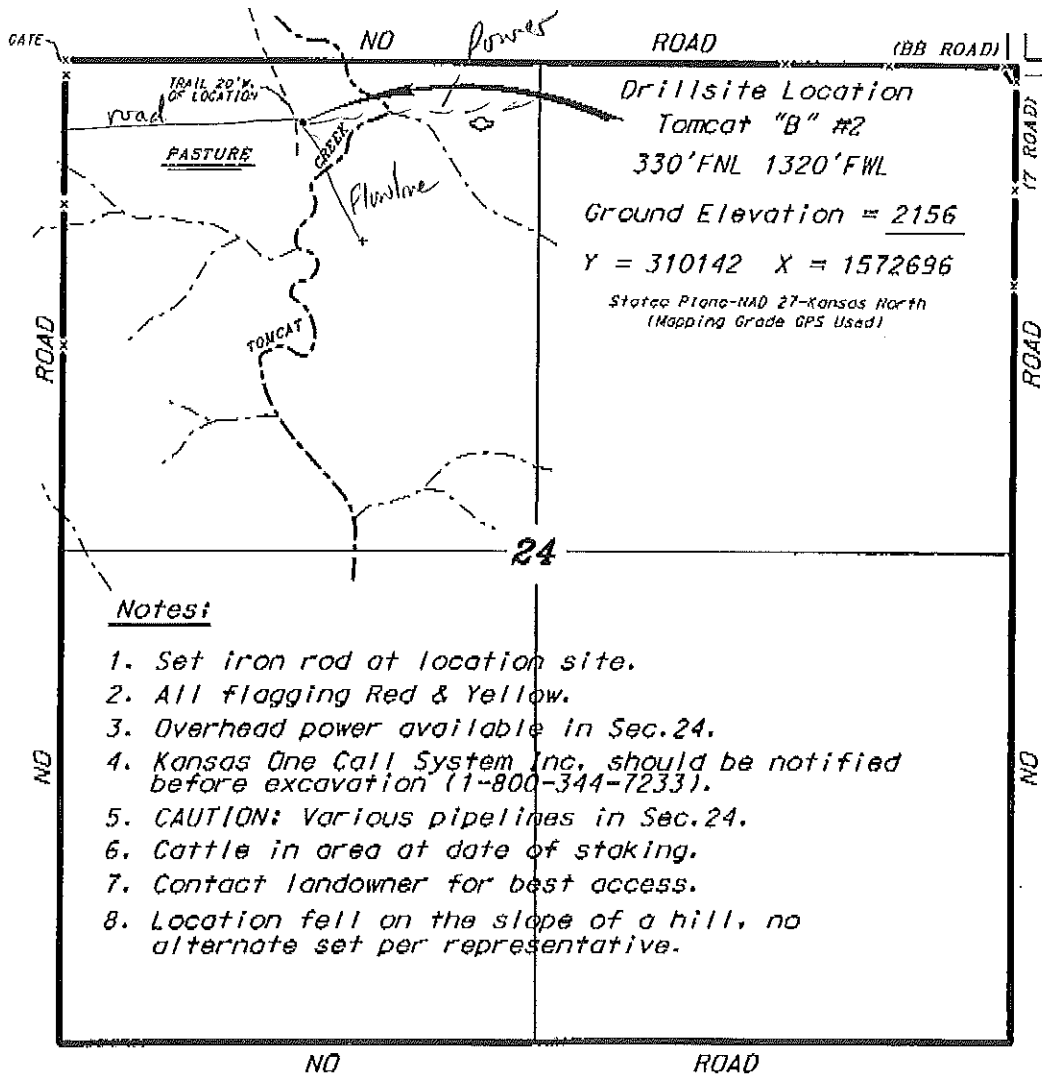


**VESS OIL CORPORATION
TOMCAT LEASE
NW. 1/4, SECTION 24, T10S, R20W
ROOKS COUNTY, KANSAS**

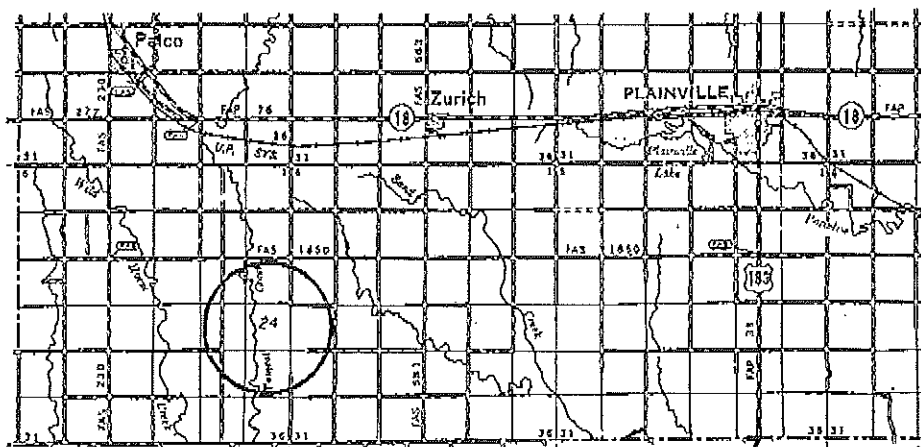
Directions:

From the intersection of Highway 18 and a north-south road at the west edge of Zurich, Kansas go 3.0 miles west on Highway 18 to a four-way intersection, then go 4.0 miles south to the NE corner of Section 24, then go 0.75 miles west, then go 0.05 miles south to location.



Notes:

1. Set iron rod at location site.
2. All flagging Red & Yellow.
3. Overhead power available in Sec. 24.
4. Kansas One Call System Inc. should be notified before excavation (1-800-344-7233).
5. CAUTION: Various pipelines in Sec. 24.
6. Cattle in area at date of staking.
7. Contact landowner for best access.
8. Location fell on the slope of a hill, no alternate set per representative.



• Controlling data is based upon the best maps and photographs available to us and upon a regular section of land containing 640 acres.
 • Appropriate section lines were determined using the normal standard of care of oilfield surveyors practicing in the state of Kansas. The section corners, which establish the precise section lines, were not necessarily located, and the exact location of the drillsite location in the section is not guaranteed. Therefore, the operator securing this service and occupying this plot and all other parties relying thereon agree to hold Central Kansas Oilfield Services, Inc., its officers and employees harmless from all losses, costs and expenses and said entities released from any liability from incidental or consequential damages.
 • Elevations derived from National Geodetic Vertical Datum.

Date

July 17, 2012