

**VESS OIL CORPORATION
HAUSER LEASE
SW.1/4, SECTION 34, T11S, R17W
ELLIS COUNTY, KANSAS**

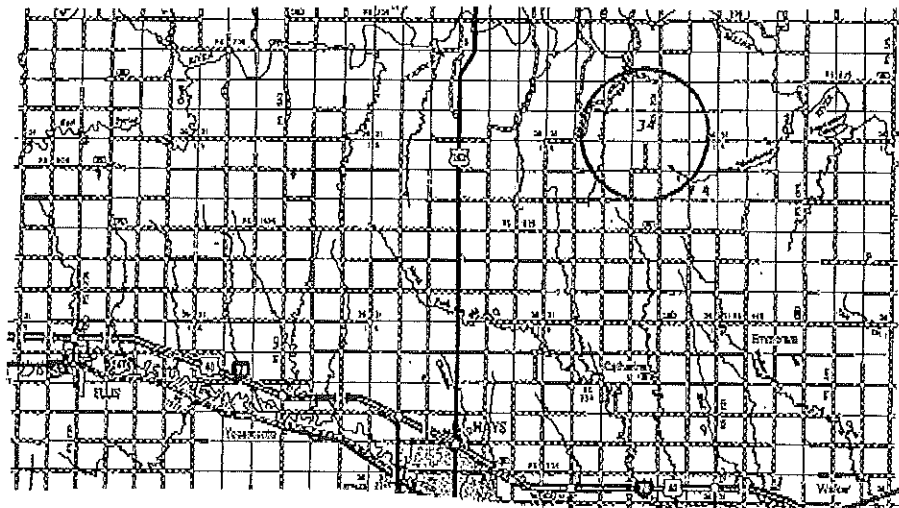
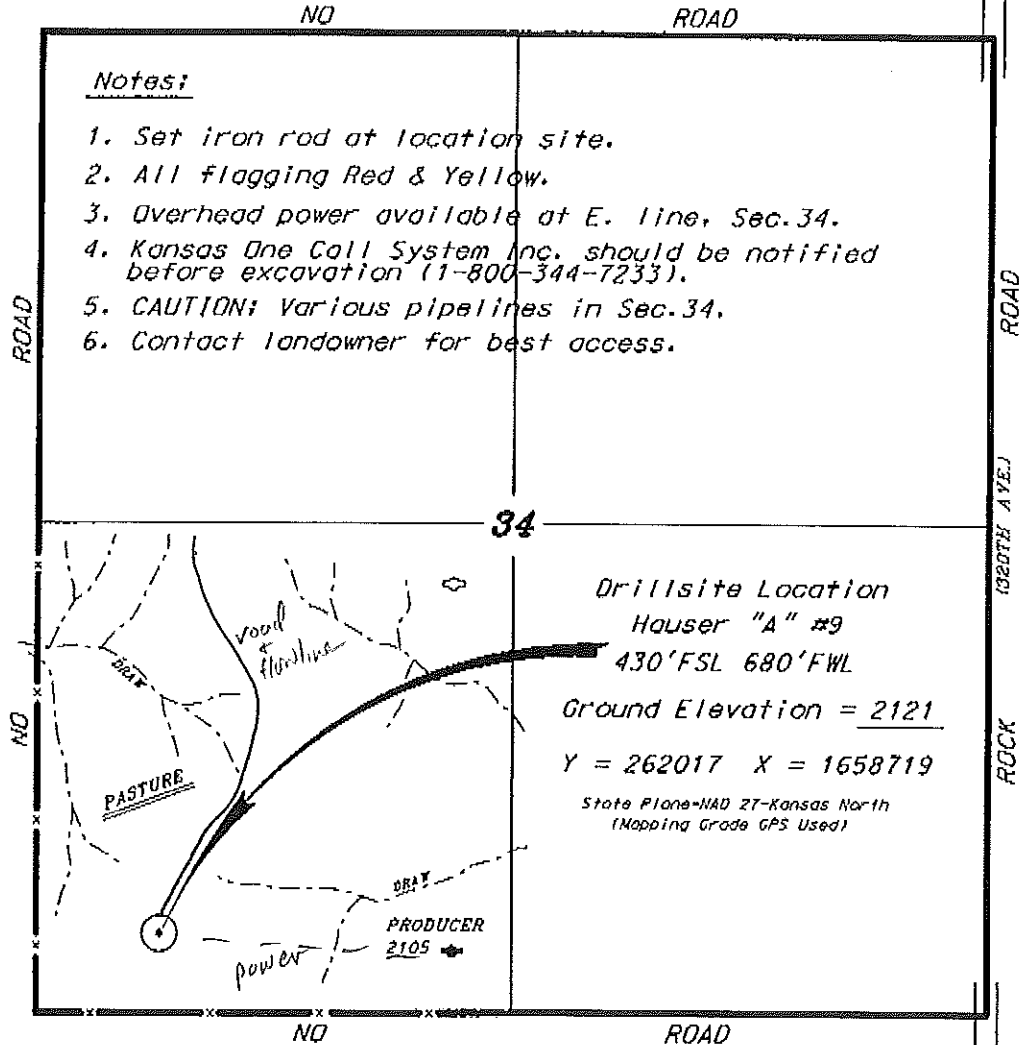
Directions:

From the intersection of Highway 183 and Interstate 70 at the north end of Hays, Ks. go 8.0 miles North on Highway 183, then go 7.0 miles East, then go 2.0 miles North to the SE corner of Section 34, then go 0.87 miles West, then go 0.08 miles North to location.

Notes:

1. Set iron rod at location site.
2. All flagging Red & Yellow.
3. Overhead power available at E. line, Sec.34.
4. Kansas One Call System Inc. should be notified before excavation (1-800-344-7233).
5. CAUTION: Various pipelines in Sec.34.
6. Contact landowner for best access.

*Ingress and egress to location as shown on this plan is per usage only and may not be legally opened for public use. Contact landowner, tenant and county road department for access.



• Control line data is based upon the best maps and photographs available to us and upon a regular section of land containing 640 acres.
 • Approximate section lines were determined using the normal standard of care of oilfield surveyors practicing in the state of Kansas. The section corners, which establish the precise section lines, were not necessarily located, and the exact location of the drillsite location in the section is not guaranteed. Therefore, the operator securing this service and accepting this plan and all other parties relying thereon agree to hold Central Kansas Oilfield Services, Inc., its officers and employees harmless from all losses, costs and expenses and hold entities released from any liability from incidental or consequential damages.
 • Elevations derived from national Geodetic Vertical datum.

Date July 17, 2012