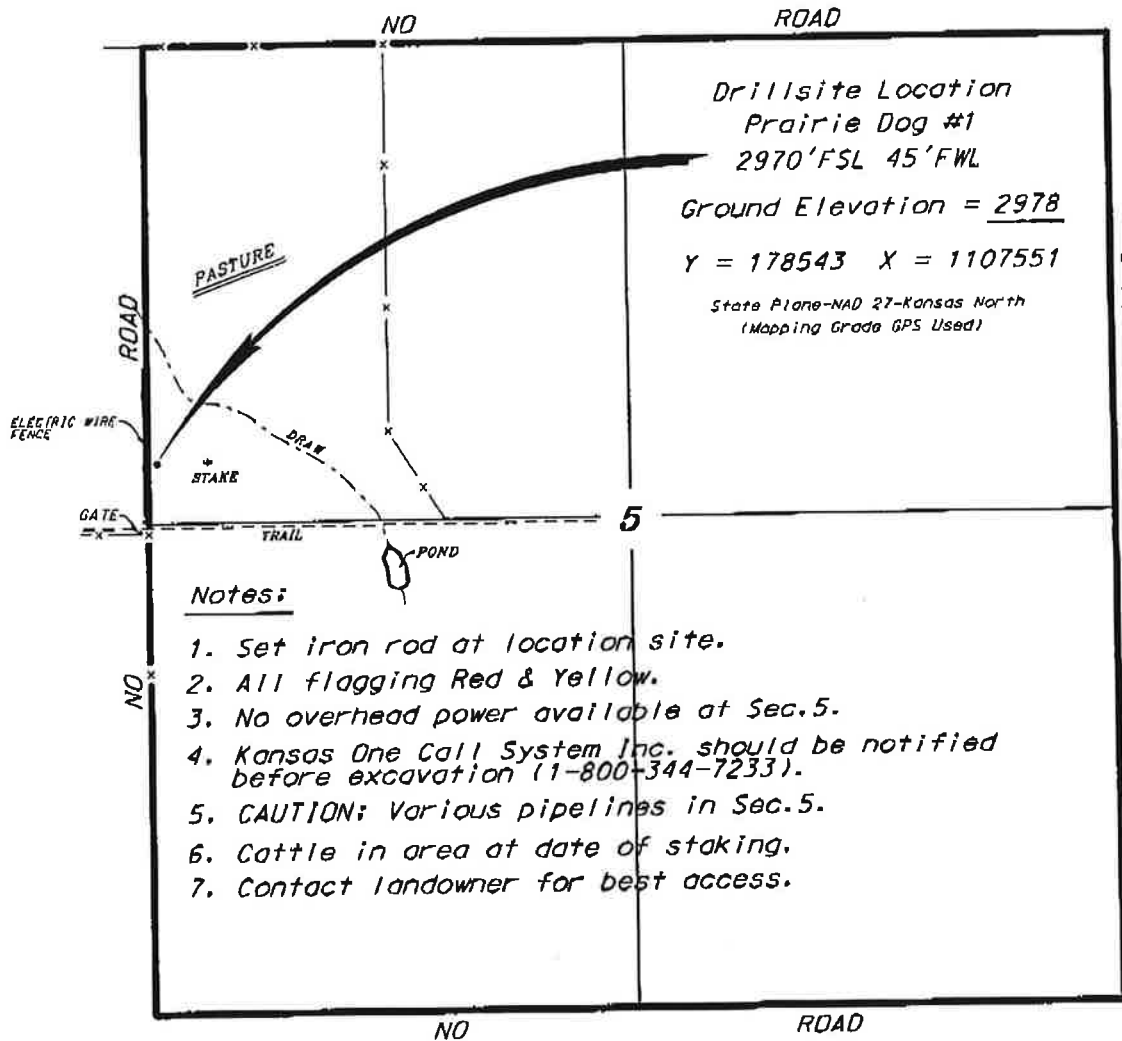


NEW GULF OPERATING, LLC
 PRAIRIE DOG LEASE
 NW.1/4, SECTION 5, T15S, R34W
 LOGAN COUNTY, KANSAS

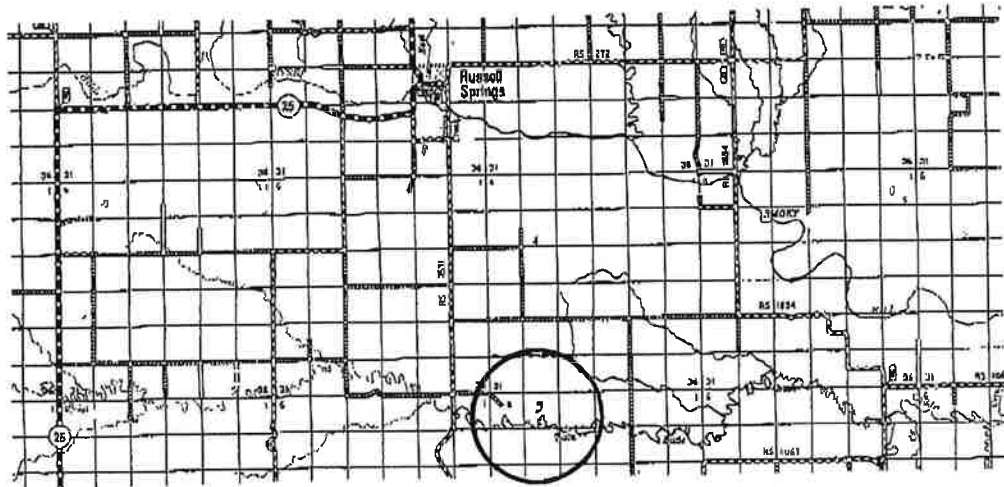


Drillsite Location
 Prairie Dog #1
 2970'FSL 45'FWL
 Ground Elevation = 2978
 Y = 178543 X = 1107551
 State Plane-NAD 27-Kansas North
 (Mapping Grade GPS Used)

Notes:

1. Set iron rod at location site.
2. All flagging Red & Yellow.
3. No overhead power available at Sec.5.
4. Kansas One Call System Inc. should be notified before excavation (1-800-344-7233).
5. CAUTION: Various pipelines in Sec.5.
6. Cattle in area at date of staking.
7. Contact landowner for best access.

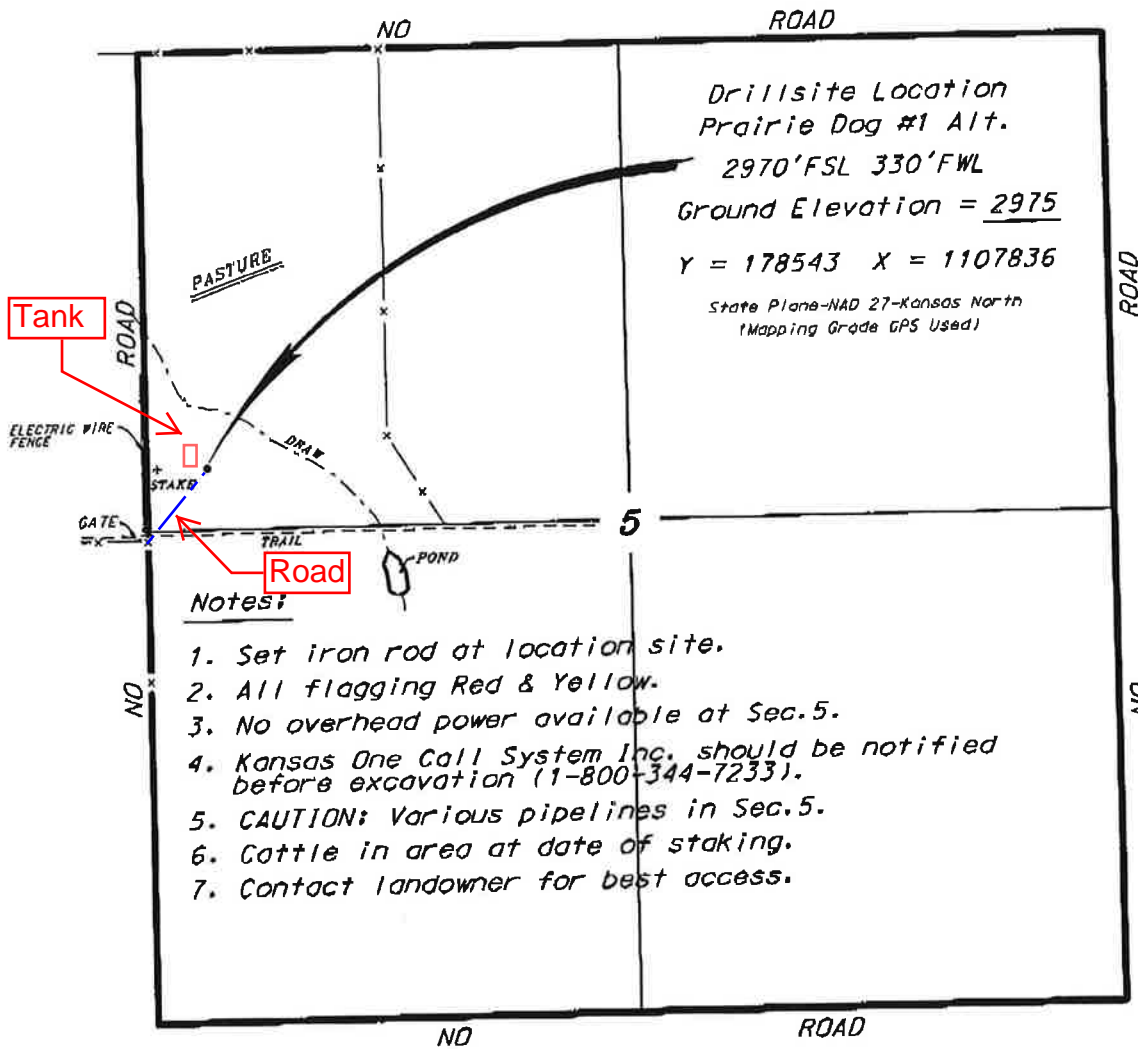
*Ingress and egress to location as shown on this plat is for usage only and may not be legally opened for public use. Contact landowner, tenant and county road department for access.



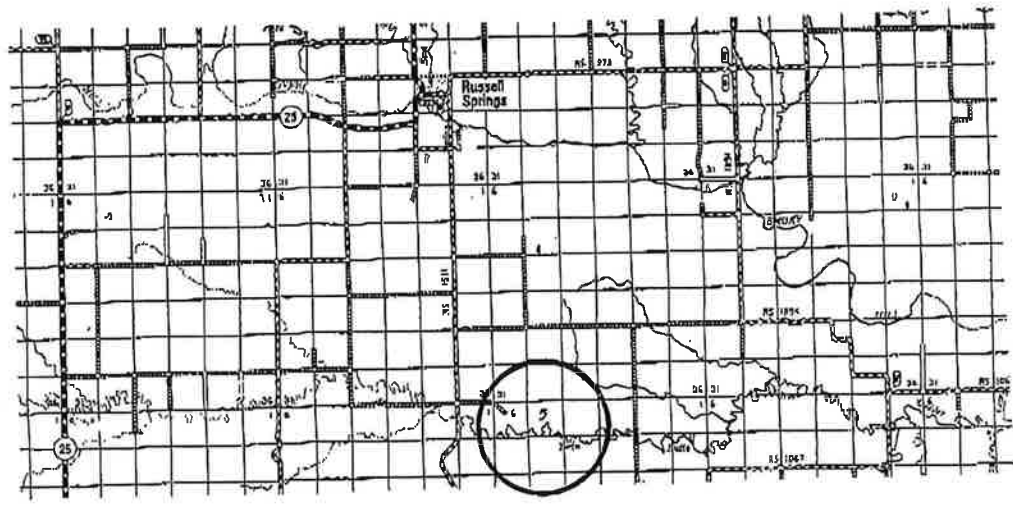
• Controlling data is based upon the best maps and photographs available to us and upon a regular section of land containing 640 acres.
 • Approximate section lines were determined using the normal standard of care of oilfield surveyors practicing in the state of Kansas. The section corners, which establish the precise section lines, were not necessarily located and the exact location of the drillsite location in the section is not guaranteed. Therefore, the operator securing this service and accepting this plat, and all other parties relying thereon agree to hold Central Kansas Oilfield Services, Inc., its officers and employees harmless from all losses, costs and expenses and hold entities released from any liability from incidental or consequential damages.
 • Elevations derived from National Geodetic Vertical Datum.

Date July 24, 2012

NEW GULF OPERATING, LLC
PRAIRIE DOG LEASE
NW. 1/4, SECTION 5, T15S, R34W
LOGAN COUNTY, KANSAS



*Ingress and egress to location as shown on this plat is for usage only and may not be legally opened for public use. Contact landowner, tenant and county road department for access.



Controlling data is based upon the best maps and photostereos available to us and upon a regular section of land containing 640 acres.

Approximate section lines were determined using the normal standards of care of oilfield surveyors practicing in the state of Kansas. The section corners, which establish the precise section lines, were not necessarily located, and the exact location of the drillsite location in the section is not guaranteed. Therefore, the operator accepting this service and accepting this plat and all other parties relying thereon agree to hold Central Kansas Oilfield Services, Inc., its officers and employees harmless from all losses, costs and expenses and said parties released from any liability from incidental or consequential damages.

Elevations derived from National Geodetic Vertical Datum.

Date July 24, 2012