

THIS DRAWING DOES NOT REPRESENT A BOUNDARY SURVEY, DISTANCES, COORDINATES AND BEARINGS SHOWN ARE NOT INTENDED TO BE DEFINITIVE IN ESTABLISHING ACTUAL TITLE BOUNDARY. THIS DRAWING IS FOR CONSTRUCTION PURPOSES ONLY.

All Bearings, Distances, and Coordinates shown hereon are based on the Kansas State Plane Coordinate System, N.A.D. 27 Datum, South Zone.

**PROPOSED SURFACE LOCATION**  
**2,019' FEL & 249' FSL**  
**OF SECTION 1**

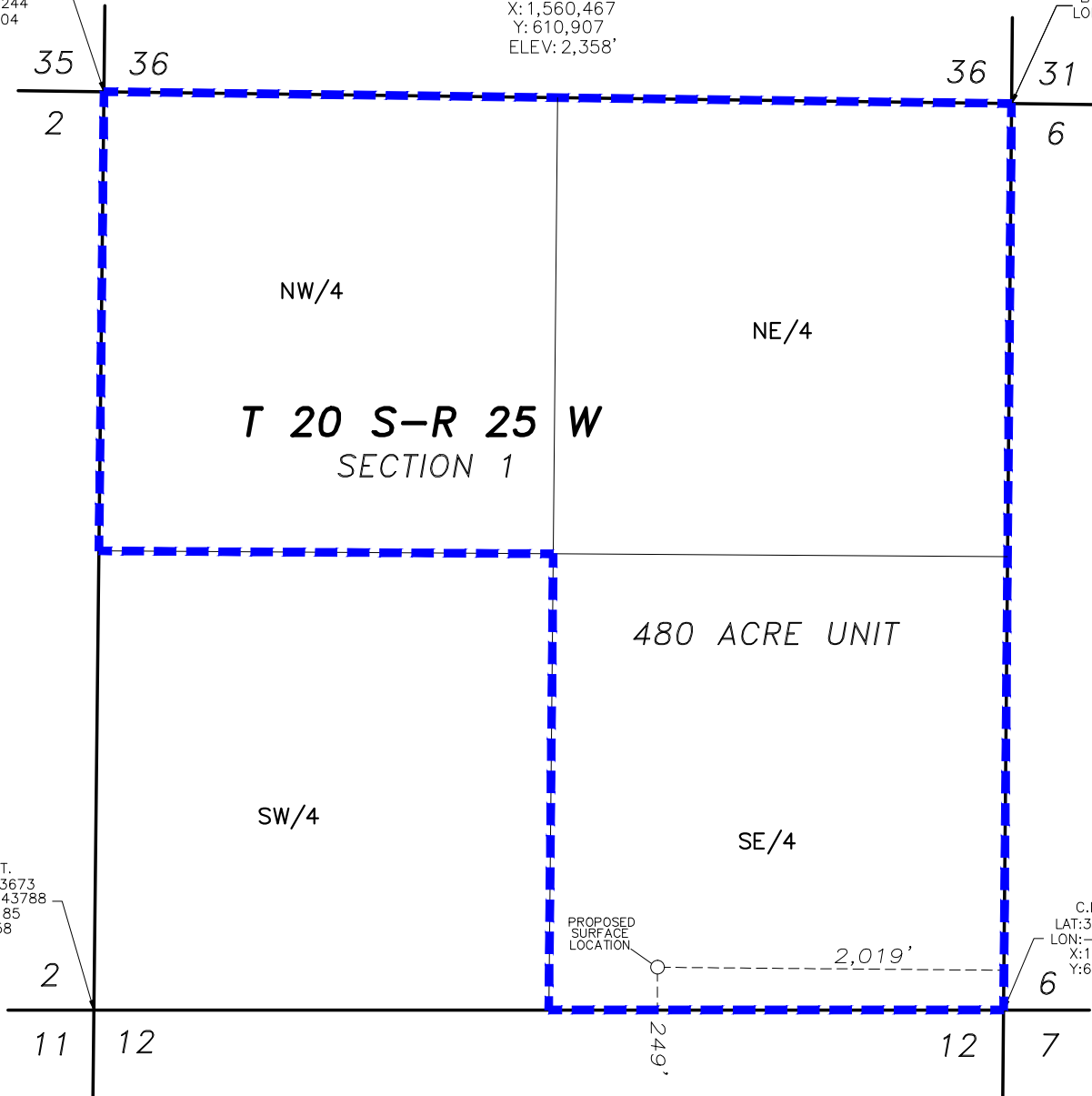
LAT: 38.334505  
 LON: -100.032364  
 X: 1,560,467  
 Y: 610,907  
 ELEV: 2,358'

SPIKE N.L.F.  
 LAT: 38.348403  
 LON: -100.025462  
 X: 1,562,529  
 Y: 615,935

C.L./INT.  
 LAT: 38.348354  
 LON: -100.043891  
 X: 1,557,244  
 Y: 616,004

C.L./INT.  
 LAT: 38.333673  
 LON: -100.043788  
 X: 1,557,185  
 Y: 610,658

C.L./INT.  
 LAT: 38.333913  
 LON: -100.025321  
 X: 1,562,484  
 Y: 610,658



— — — — — = UNIT LINE

**FINAL COPY**

**PROPOSED WELL LOCATION**  
**ENCANA OIL & GAS (USA) INC.**  
**KERR 1V-1 SWD**  
**NESS COUNTY, KANSAS**  
**SCALE: 1" = 1000'**