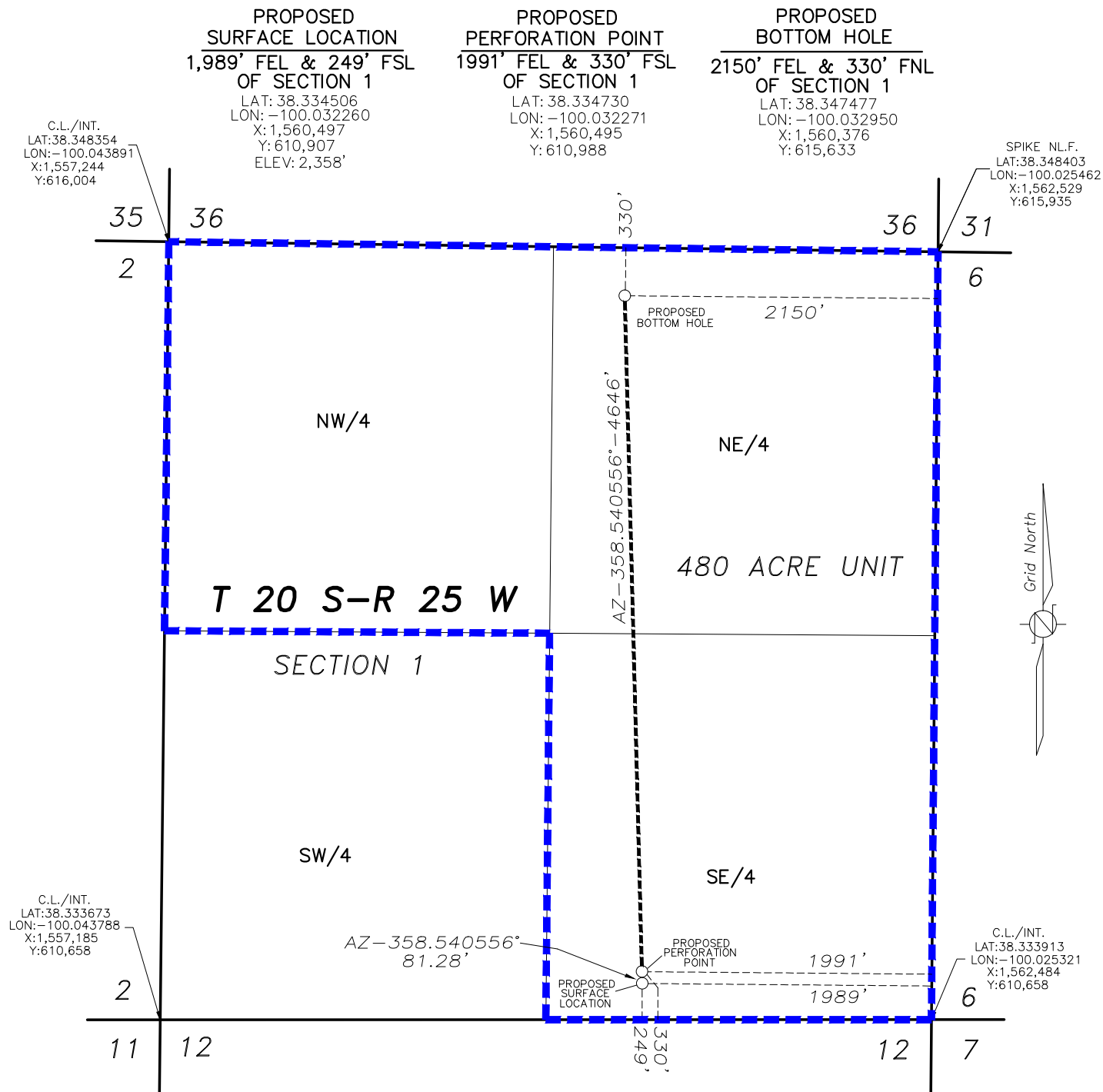


THIS DRAWING DOES NOT REPRESENT A BOUNDARY SURVEY, DISTANCES, COORDINATES AND BEARINGS SHOWN ARE NOT INTENDED TO BE DEFINITIVE IN ESTABLISHING ACTUAL TITLE BOUNDARY. THIS DRAWING IS FOR CONSTRUCTION PURPOSES ONLY.

All Bearings, Distances, and Coordinates shown hereon are based on the Kansas State Plane Coordinate System, N.A.D. 27 Datum, South Zone.



**FINAL COPY**

**PROPOSED WELL LOCATION  
 ENCANA OIL & GAS (USA) INC.  
 KERR 1H-2  
 NESS COUNTY, KANSAS  
 SCALE: 1" = 1000'**