

THIS DRAWING DOES NOT REPRESENT A BOUNDARY SURVEY, DISTANCES, COORDINATES AND BEARINGS SHOWN ARE NOT INTENDED TO BE DEFINITIVE IN ESTABLISHING ACTUAL TITLE BOUNDARY. THIS DRAWING IS FOR CONSTRUCTION PURPOSES ONLY.

All Bearings, Distances, and Coordinates shown hereon are based on the Kansas State Plane Coordinate System, N.A.D. 27 Datum, South Zone.

PROPOSED SURFACE LOCATION OF SECTION 1
 1,959' FEL & 249' FSL
 LAT: 38.334508
 LON: -100.032155
 X: 1,560,527
 Y: 610,907
 ELEV: 2,357'

PROPOSED PERFORATION POINT OF SECTION 12
 1959' FEL & 330' FNL
 LAT: 38.332919
 LON: -100.032141
 X: 1,560,521
 Y: 610,328

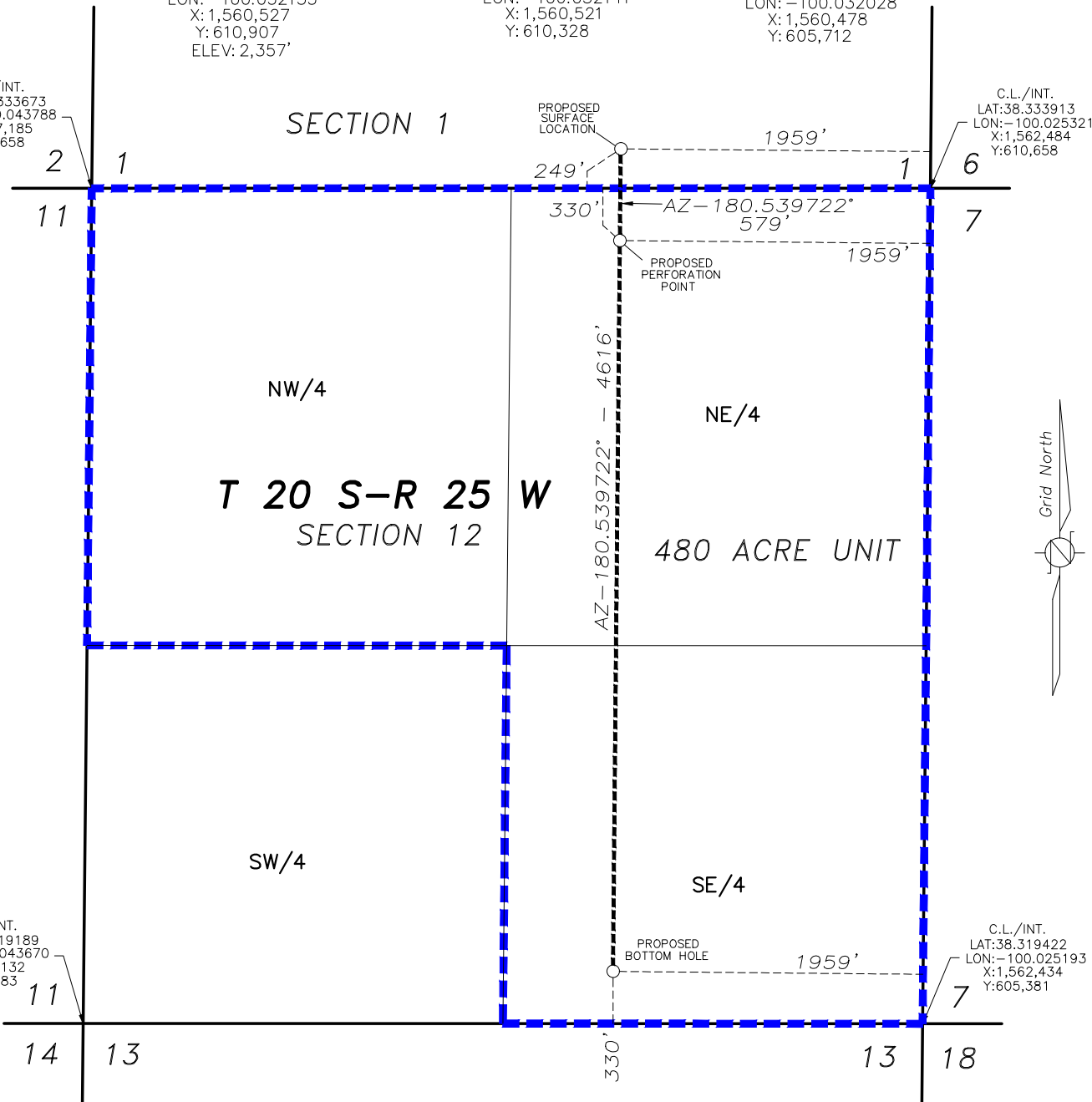
PROPOSED BOTTOM HOLE OF SECTION 12
 1959' FEL & 330' FSL
 LAT: 38.320242
 LON: -100.032028
 X: 1,560,478
 Y: 605,712

C.L./INT.
 LAT: 38.333673
 LON: -100.043788
 X: 1,557,185
 Y: 610,658

C.L./INT.
 LAT: 38.333913
 LON: -100.025321
 X: 1,562,484
 Y: 610,658

C.L./INT.
 LAT: 38.319189
 LON: -100.043670
 X: 1,557,132
 Y: 605,383

C.L./INT.
 LAT: 38.319422
 LON: -100.025193
 X: 1,562,434
 Y: 605,381



FINAL COPY

**PROPOSED WELL LOCATION
 ENCANA OIL & GAS (USA) INC.
 KERR 12H-1
 NESS COUNTY, KANSAS
 SCALE: 1" = 1000'**

— — — — — = UNIT LINE