

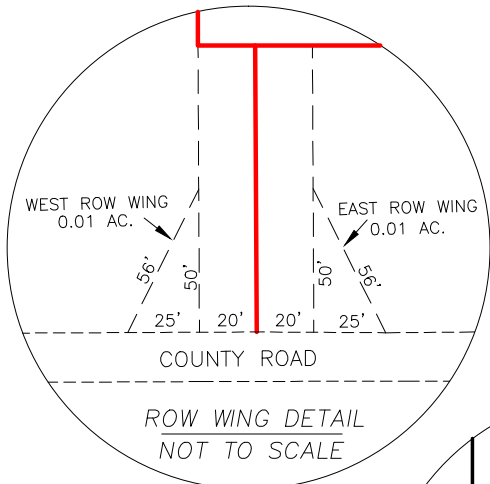
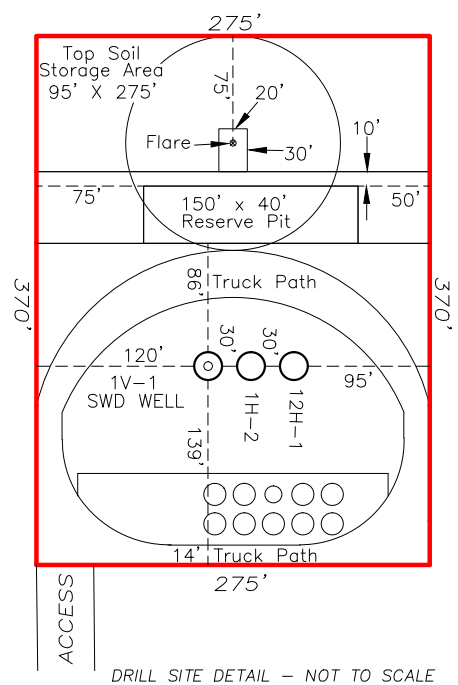
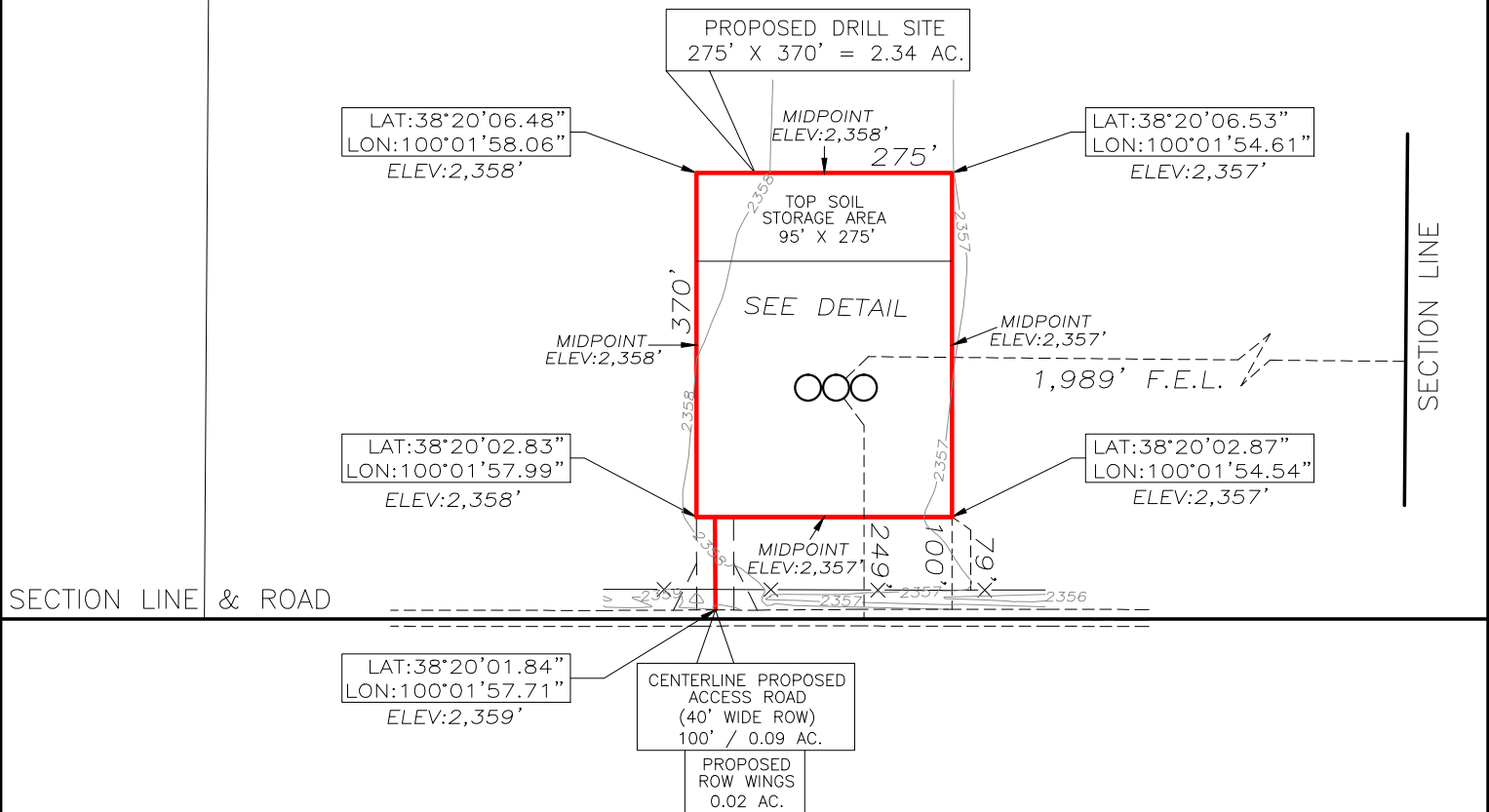
T 20 S - R 25 W

SECTION 1

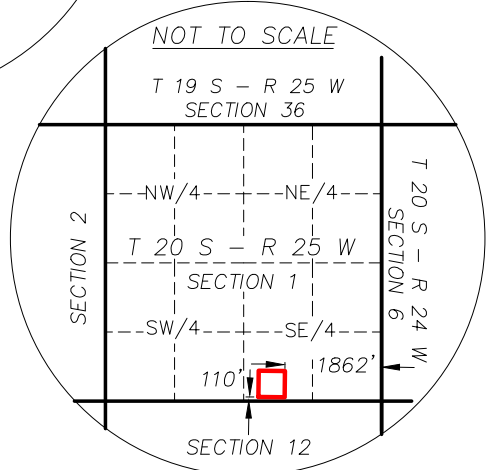
SW/4 OF SE/4

SURFACE OWNER
GAYLEN P. & DEBRA M. KERR

1V-1 SWD LAT:38°20'04.22" LON:100°01'56.51" ELEV:2,358	1H-2 LAT:38°20'04.22" LON:100°01'56.13" ELEV:2,358	12H-1 LAT:38°20'04.23" LON:100°01'55.76" ELEV:2,357
---	---	--



FINAL COPY



**CONSTRUCTION PLAT
SHOWING PROPOSED
DRILL SITE AND ACCESS ROAD
ENCANA OIL & GAS (USA) INC.
KERR 1V-1 SWD, 1H-2 & 12H-1
SECTION 1, T20S-R25W, SWSE
NESS COUNTY, KANSAS
SCALE: 1" = 200'**

ROW WINGS = 0.02 AC. ACCESS ROAD = 0.09 AC. DRILL SITE = 2.34 AC.
TOTAL = 2.45 AC.