

TRILOBITE TESTING, INC.

DRILL STEM TEST REPORT

Ritchie Exploration Inc.

24 17s 35w Wichita Ks

8100 E. 22nd st. N.
#700 Box 783188 Wichita Ks. 67278

Noonan #1

Job Ticket: 45941

DST#: 7

ATTN: Ted Jochems

Test Start: 2012.04.09 @ 23:05:00

GENERAL INFORMATION:

Formation: **Altamont C Zone**

Deviated: No Whipstock: ft (KB)

Time Tool Opened: 01:11:15

Time Test Ended: 05:57:30

Test Type: Conventional Bottom Hole (Reset)

Tester: Jace McKinney

Unit No: 46

Interval: **4569.00 ft (KB) To 4588.00 ft (KB) (TVD)**

Reference Elevations: 3184.00 ft (KB)

Total Depth: 4588.00 ft (KB) (TVD)

3174.00 ft (CF)

Hole Diameter: 7.80 inches Hole Condition: Good

KB to GR/CF: 10.00 ft

Serial #: 8675

Inside

Press@RunDepth: 28.81 psig @ 4570.00 ft (KB)

Capacity: 8000.00 psig

Start Date: 2012.04.09

End Date:

2012.04.10

Last Calib.: 2002.01.06

Start Time: 23:05:01

End Time:

05:57:30

Time On Btm: 2012.04.10 @ 01:10:00

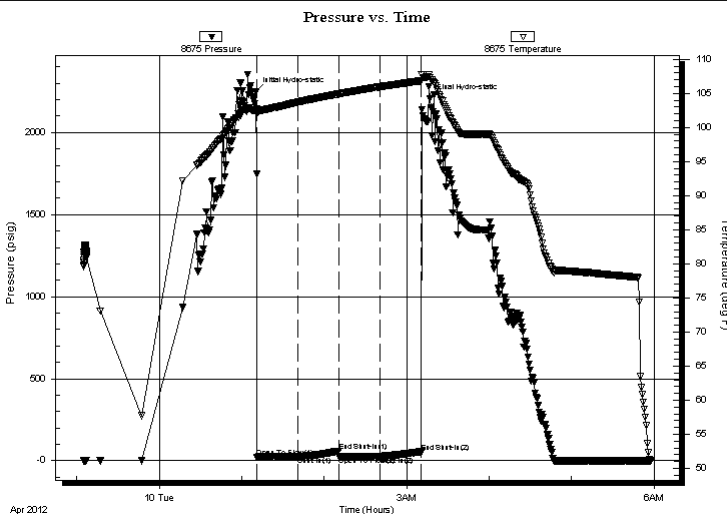
Time Off Btm: 2012.04.10 @ 03:17:00

TEST COMMENT: Weak surface blow . Died in 15 min.

No return blow

Flushed tool. No blow

No return blow



PRESSURE SUMMARY

| Time (Min.) | Pressure (psig) | Temp (deg F) | Annotation |
|-------------|-----------------|--------------|----------------------|
| 0 | 2249.24 | 102.57 | Initial Hydro-static |
| 2 | 23.16 | 102.02 | Open To Flow (1) |
| 31 | 25.99 | 103.70 | Shut-In(1) |
| 61 | 59.73 | 104.92 | End Shut-In(1) |
| 61 | 26.48 | 104.90 | Open To Flow (2) |
| 91 | 28.81 | 105.96 | Shut-In(2) |
| 121 | 55.14 | 106.84 | End Shut-In(2) |
| 127 | 2205.83 | 107.30 | Final Hydro-static |

Recovery

| Length (ft) | Description | Volume (bbl) |
|-------------|-------------|--------------|
| 30.00 | 100% Mud | 0.42 |
| | | |
| | | |
| | | |
| | | |

Gas Rates

| | Choke (inches) | Pressure (psig) | Gas Rate (Mcf/d) |
|--|----------------|-----------------|------------------|
| | | | |

* Recovery from multiple tests



**TRILOBITE
TESTING, INC.**

DRILL STEM TEST REPORT

FLUID SUMMARY

Ritchie Exploration Inc.

24 17s 35w Wichita Ks

8100 E. 22nd st. N.
#700 Box 783188 Wichita Ks. 67278

Noonan #1

Job Ticket: 45941

DST#: 7

ATTN: Ted Jochems

Test Start: 2012.04.09 @ 23:05:00

Mud and Cushion Information

Mud Type: Gel Chem

Cushion Type:

Oil API:

deg API

Mud Weight: 9.00 lb/gal

Cushion Length:

ft

Water Salinity:

ppm

Viscosity: 65.00 sec/qt

Cushion Volume:

bbbl

Water Loss: 8.79 in³

Gas Cushion Type:

Resistivity: ohm.m

Gas Cushion Pressure:

psig

Salinity: 8000.00 ppm

Filter Cake: 1.00 inches

Recovery Information

Recovery Table

| Length ft | Description | Volume bbl |
|--------------|-------------|---------------|
| 30.00 | 100% Mud | 0.421 |

Total Length: 30.00 ft Total Volume: 0.421 bbl

Num Fluid Samples: 0

Num Gas Bombs: 0

Serial #:

Laboratory Name:

Laboratory Location:

Recovery Comments:

Serial #: 8675

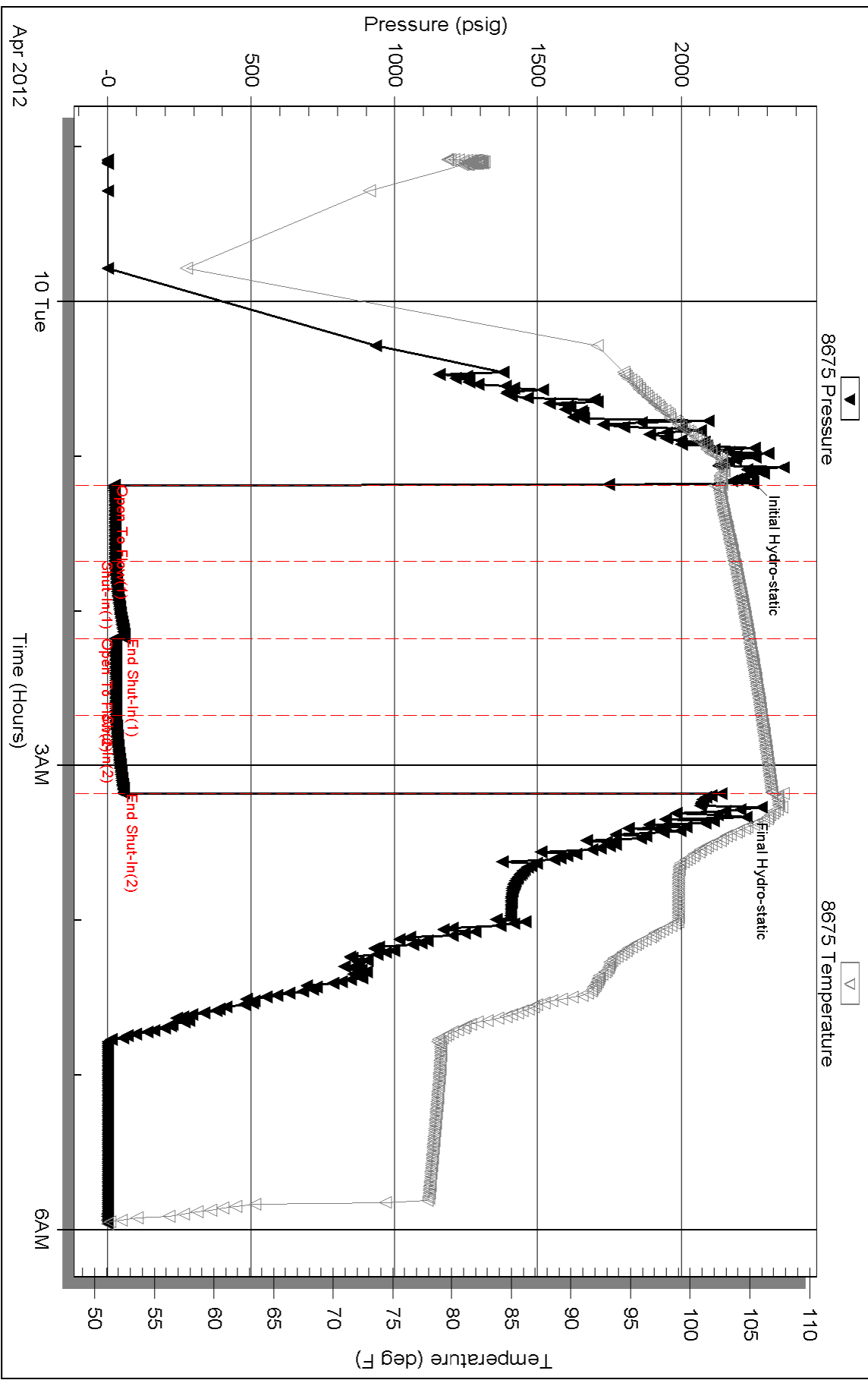
Inside

Ritchie Exploration Inc.

Noonan #1

DST Test Number: 7

Pressure vs. Time



Triobite Testing, Inc

Ref. No: 45941

Printed: 2012.04.11 @ 07:44:46