

KEVIN L. KESSLER
CONSULTING PETROLEUM GEOLOGIST
(316) 522-7338

OPERATOR : MULL DRILLING COMPANY INC.
LEASE : DAVID WELL # : 2 - 16
LOCATION : 1113'FSL & 2136'FWL
SEC: 16 TWP : 17 S RGE : 23 W
COUNTY : NESS STATE : KANSAS

ELEVATION
KB : 2461
GL : 2456
MEASUREMENTS FROM
KB

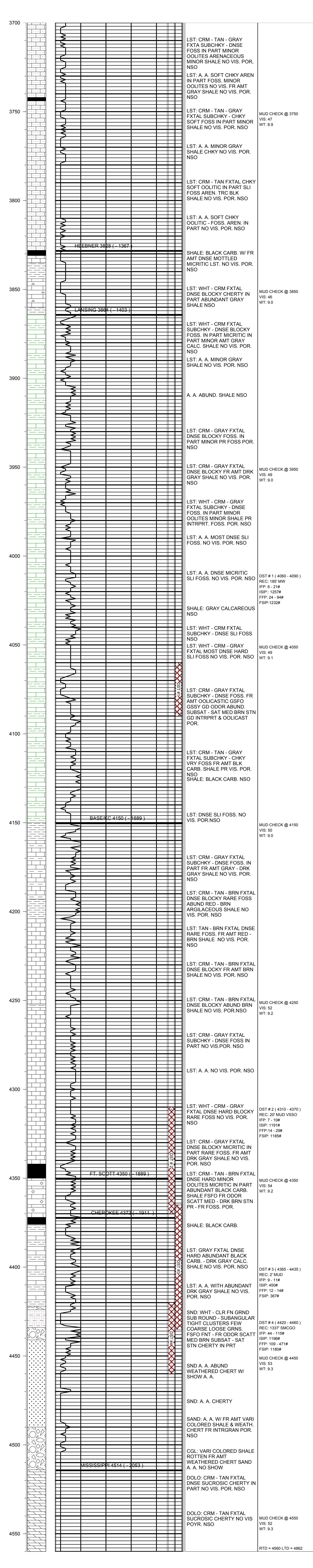
CONTRACTOR : W W DRILLING RIG # 10
COMM : 04 / 09 / 2012 COMP : 04 / 17 / 2012
RTD : 4560 LOG TD : 4562
SAMPLES SAVED FROM : 3600 TO : RTD
GEOLOGICAL SUPERVISION FROM : 3600 TO : RTD
MUD UP : 3500 TYPE MUD : CHEMICAL

CASING RECORD
SURFACE :
8 5/8" @ 222'
PRODUCTION :
5 1/2" @ 4560'

FORMATION	TOP	LOG	DATUM	TOP	SAMPLE	DATUM	STRUCT. COMP.
HEEBNER	3828		- 1367	3828		- 1367	FLAT
LANSING	3864		- 1403	3864		- 1403	- 01
BASE / KC	4150		- 1689	4150		- 1689	- 01
FORT SCOTT	4350		- 1889	4350		- 1889	FLAT
CHEROKEE	4372		- 1911	4372		- 1911	+ 01
MISSISSIPPI	4514		- 2053	4514		- 2053	- 21

ELECTRICAL SURVEYS:
DIL
CNL / CDL
MICRO
SONIC

REFERENCE WELL FOR STRUCTURAL COMPARISON :
MULL DRILLING # 1 - 16X DAVID 16 - T 17 S - R 23 W NESS COUNTY KANSAS



COMMENTS:

5 1/2" PRODUCTION CASING WAS SET TO FURTHER EVALUATE THE PRODUCTIVITY OF THIS WELL

KEVIN L. KESSLER