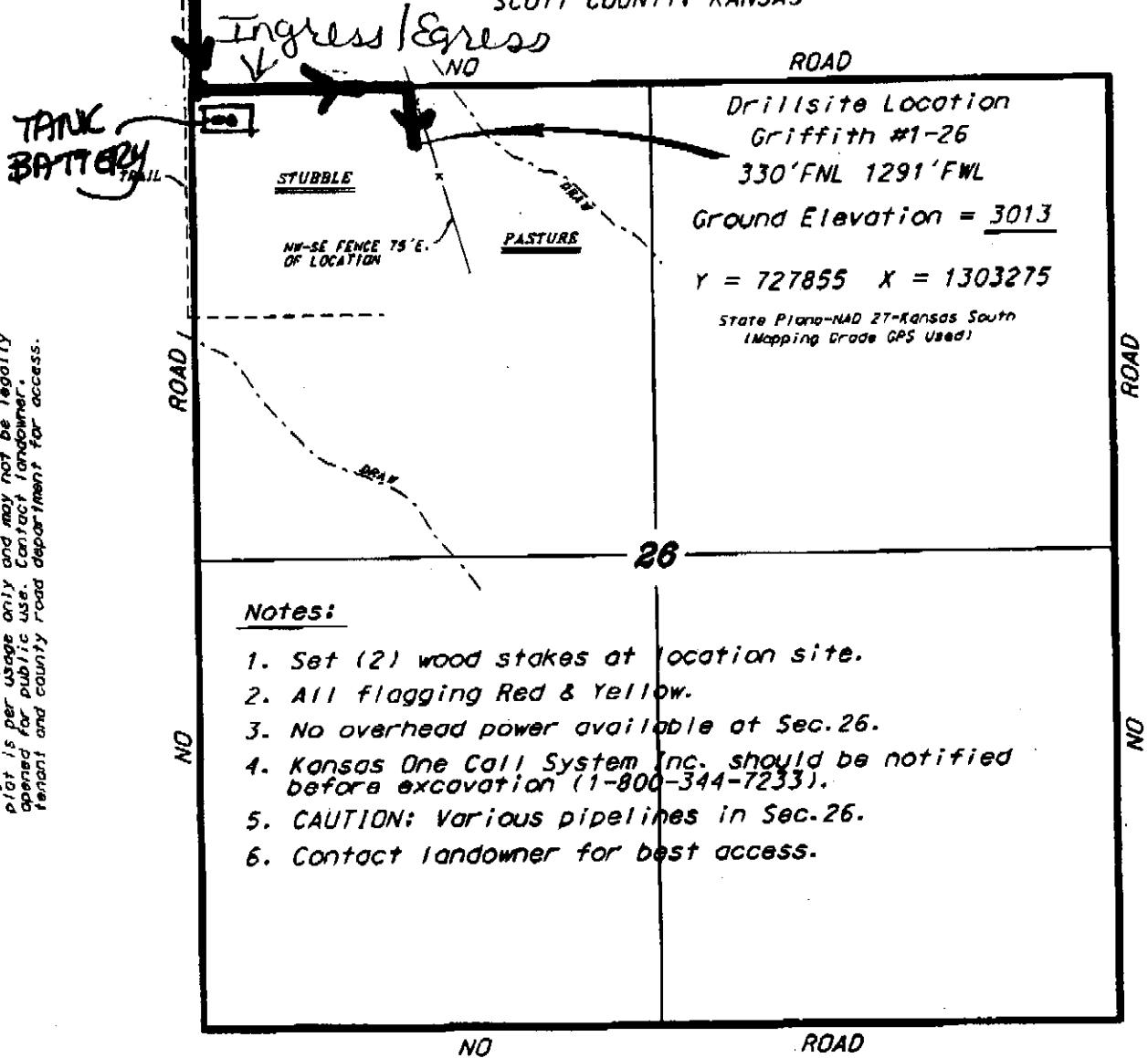
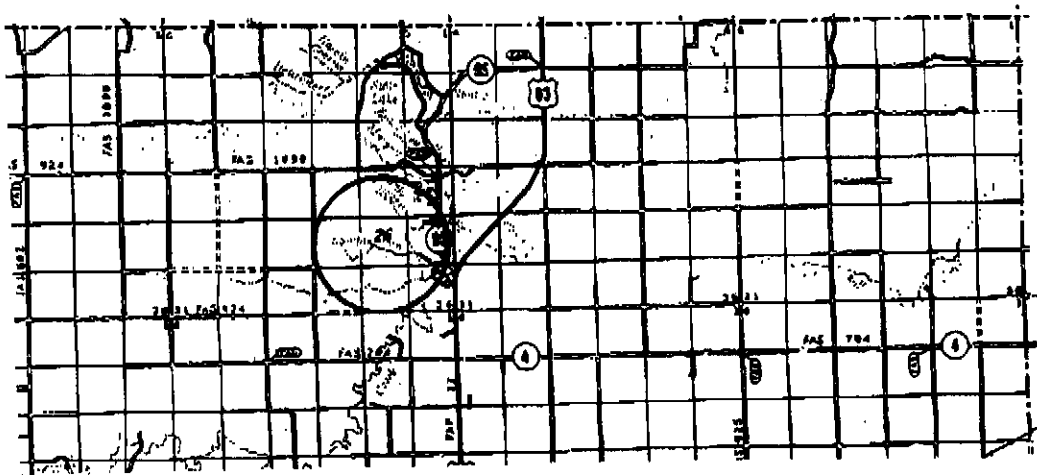


GRAND MESA OPERATING COMPANY  
 GRIFFITH LEASE  
 NW. 1/4, SECTION 26, T16S, R33W  
 SCOTT COUNTY, KANSAS



**Notes:**

1. Set (2) wood stakes at location site.
2. All flagging Red & Yellow.
3. No overhead power available at Sec. 26.
4. Kansas One Call System Inc. should be notified before excavation (1-800-344-7233).
5. CAUTION: Various pipelines in Sec. 26.
6. Contact landowner for best access.



\* Ingress and egress to location as shown on this plot is for usage only and may not be legally opened for public use. Contact landowner, tenant and county road department for access.

• Controlling data is based upon the best map and photographs available to us and upon a regular section of land containing 140 acres.  
 • Approximate section lines were determined using the normal standards of care of oilfield surveyors practicing in the state of Kansas. The section corners, which establish the precise section lines, were not necessarily located, and the exact location of the drill site location in the section is not guaranteed. Therefore, the operator assuming this service and locating this site and all other parties relying thereon agree to hold Central Kansas Oilfield Services, Inc., its officers and employees harmless from all losses, suits and expenses and hold entities released from any liability from incidental or consequential damages.

August 1, 2012

Date