



COBALT ENERGY LLC
 GEOLGISTS REPORT
 DRILL TIME &
 SAMPLE LOG

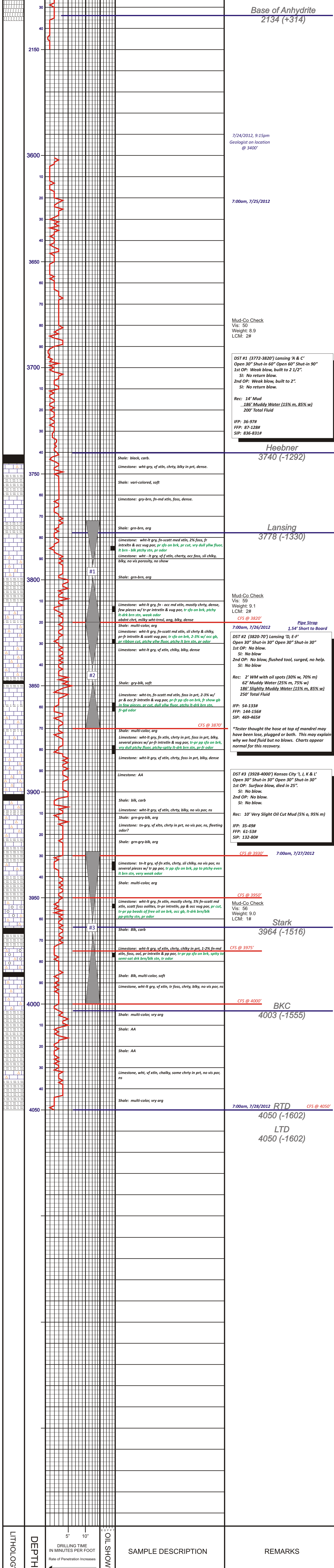
COMPANY	COBALT ENERGY LLC	ELEVATIONS	KB 2448'
LEASE	Herman-Drilling Unit 'A' #1-8	FIELD	DF
LOCATION	1650' FNL & 1662' FEL	SEC	8 TWP 10S RGE 24W
COUNTY	Graham STATE KS	CONTRACTOR	Martin Drilling, Rig #8
SPUD	7/21/12 COMP 07/28/12	RTD	4050' TYPE MUD Chemical
MUD UP	3400'	SAMPLES SAVED FROM	3600' TO RTD
DRILLING TIME KEPT FROM	3600' TO RTD	SAMPLES EXAMINED FROM	3600' TO RTD
GEOLOGICAL SUPERVISION FROM 3400' to RTD GEOLOGIST ON WELL: Corey N. Baker Pioneer Wellbore			
FORMATION TOPS	ELECTRIC LOG	SAMPLE	
Anhydrite	2101 (+347)	2100 (+348)	
Base of Anhydrite	2134 (+314)	2135 (+313)	
Heebner	3740 (-1292)	3741 (-1293)	
Lansing	3778 (-1330)	3780 (-1332)	
Stark	3964 (-1516)	3971 (-1523)	
BKC	4003 (-1555)	4017 (-1569)	
RTD	4050 (-1602)	4050 (-1602)	
LTD			

REMARKS *Based on negative drill stem test results, structure and log review, it was decided by all parties that the Herman-Drilling Unit 'A' #1-8 be plugged and abandoned as a dry hole.*

Drill Stem testing done by Troy Leiker of Trilobite Testing. Respectfully Submitted,
 Corey Baker
 Petroleum Geologist

API #15-065-23841-00-00

ANHYDRITE	SANDSTONE	LIMESTONE	SHALE	CARB SH	CHERTY LS	CHERT	DOLomite
-----------	-----------	-----------	-------	---------	-----------	-------	----------



DEPTH	DRILLING TIME IN MINUTES PER FOOT	OIL SHOWS	SAMPLE DESCRIPTION	REMARKS
-------	-----------------------------------	-----------	--------------------	---------

Company **COBALT ENERGY, LLC** Elevation **2448' KB**
 Lease **Herman-Drilling Unit 'A' #1-8**
 Location **1650' FNL & 1662' FEL** SEC. **8** TWP **10S** RGE **24W**
 County **Graham** State **Kansas**