

GEOLOGIST'S REPORT
DRILLING TIME AND SAMPLE LOG

Geologist on Well: Beth Isern
 LEASE: J SCHULER - A - #1-10
 FIELD: WILD/CAT
 LOCATION: 1550 FNL - 1880' FEL
 SEC: 10 T/MS - 188' ROE 24w
 COUNTY: Ness STATE: Kansas
 CONTRACTOR: Duke Drilling Rig #2
 SPUD: 7/7/12 COMP: 7/15/2012

RTD: 4438 LTD: 4437
 MUD UP: 3500 TYPE MUD: CHEMICAL
 SAMPLES SAVED FROM: 3700 TO RTD
 DRILLING TIME KEPT FROM: 3400 TO RTD
 SAMPLES EXAMINED FROM: 3700 TO RTD
 GEOLOGICAL SUPERVISION FROM: 3950

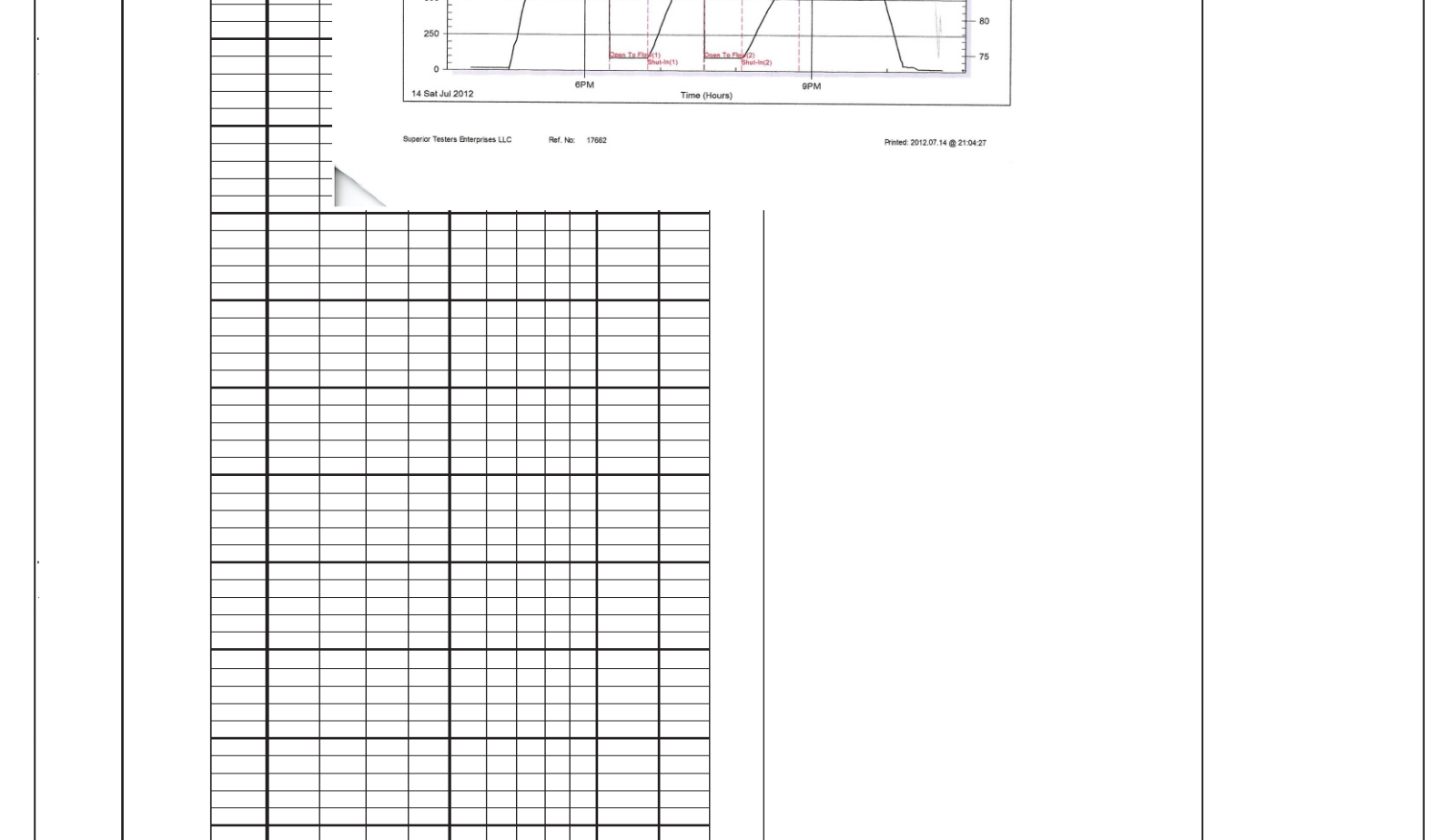
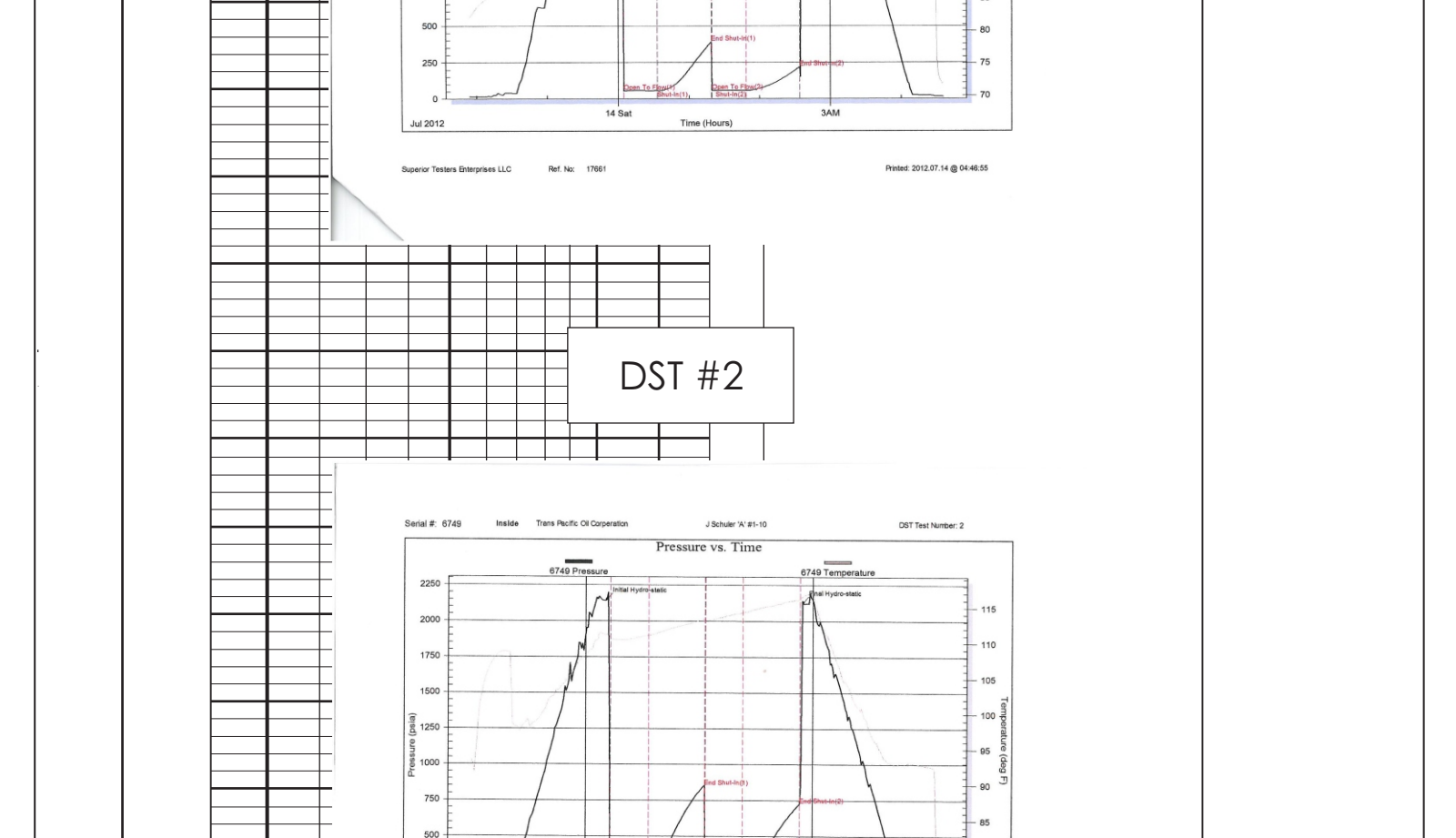
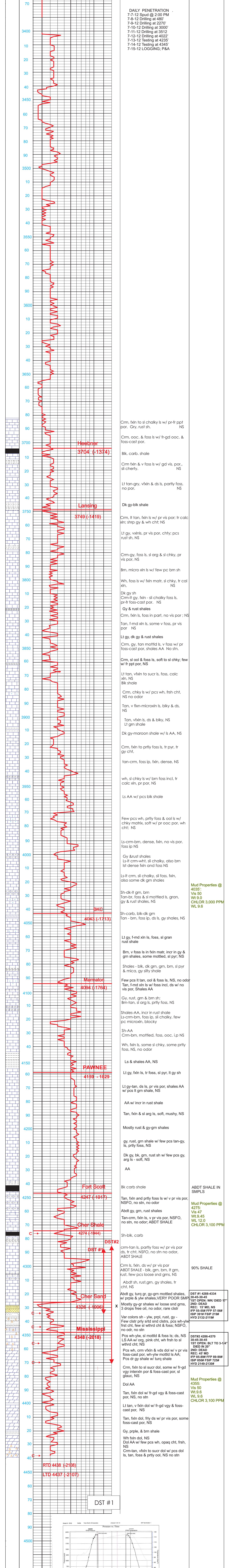
| Formation | Sample Tops | E-log Tops | Structure |
|----------------|--------------|--------------|-----------|
| Anhydrite | 1615 (+715) | 1615 (+715) | -1 |
| Base Anhydrite | 1648 (+682) | 1647 (+683) | -1 |
| Heetner | 3704 (-1374) | 3703 (-1373) | -4 |
| Lansing | 3749 (-1419) | 3747 (-1417) | -4 |
| BKC | 4043 (-1713) | 4043 (-1713) | -6 |
| Marmator | 4094 (-1764) | 4095 (-1765) | -2 |
| Fort Scott | 4247 (-1917) | 4246 (-1916) | -2 |
| Cherokee Sand | 4326 (-1996) | 4322 (-1943) | -4 |
| Cherokee Sand | 4348 (-2018) | 4323 (-1993) | -4 |
| Mississippi | 4348 (-2018) | 4350 (-2020) | +4 |

REMARKS: It was decided to plug and abandon the J Schuler #1-10 on the basis of the poor development of the Cherokee Sand, structural position, and negative results of Drill stem tests 1 & 2.

Respectfully Submitted, Beth Isern

LEGEND

| | | | | | | | | | | | | | | | |
|--|-----------|--|-----------|--|-----------|--|-------|--|---------|--|-----------|--|-------|--|----------|
| | Anhydrite | | Sandstone | | Limestone | | Shale | | Carb Sh | | Cherty LS | | Chert | | Dolomite |
|--|-----------|--|-----------|--|-----------|--|-------|--|---------|--|-----------|--|-------|--|----------|



Mud Properties @ 4035:
 Vis 50
 WL 9.0
 CHLOR 3,000 PPM
 WL 9.6

Mud Properties @ 4275:
 Vis 47
 WL 9.45
 CHLOR 3,100 PPM

Mud Properties @ 4355:
 Vis 50
 WL 9.6
 CHLOR 3,100 PPM

DST #1 4288-4334
 30-45-30-45
 1ST OPEN; WKT/ DIED 17"
 2ND: DEAD
 REC: 19 MD, NS
 IPIP 55-55# FFP 57-56#
 ISIP 391# FSP 219#
 HYD 2132-2119#

DST#2 4286-4370
 30-45-30-45
 1ST OPEN; BLT TO 3-14"
 DIED IN 30"
 2ND: DEAD
 REC: 45 MD
 IPIP 85-39# FFP 89-00#
 ISIP 850# FSP 725#
 HYD 2149-2130#