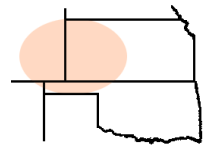




Pro-Stake LLC

Oil Field & Construction Site Staking

P.O. Box 2324
Garden City, Kansas 67846
Office/Fax: (620) 276-6159
Cell: (620) 272-1499



272116H
PLAT NO.

10343
INVOICE NO.

Herman Loeb, LLC

OPERATOR

Musselman #4-34

LEASE NAME

Pawnee Co., Ks

COUNTY

34 **21s** **16w**
Sec. Twp. Rng.

Main loc. = 1280'FSL-1300'FWL = 1985.6' gr.elev.
Alt. #1 = 1265'FSL-1230'FWL = 1985.8' gr. elev.

SCALE: N/A
DATE STAKED: Sept. 24th, 2012
MEASURED BY: Ben R.
DRAWN BY: Dee S.
AUTHORIZED BY: Jesse M.

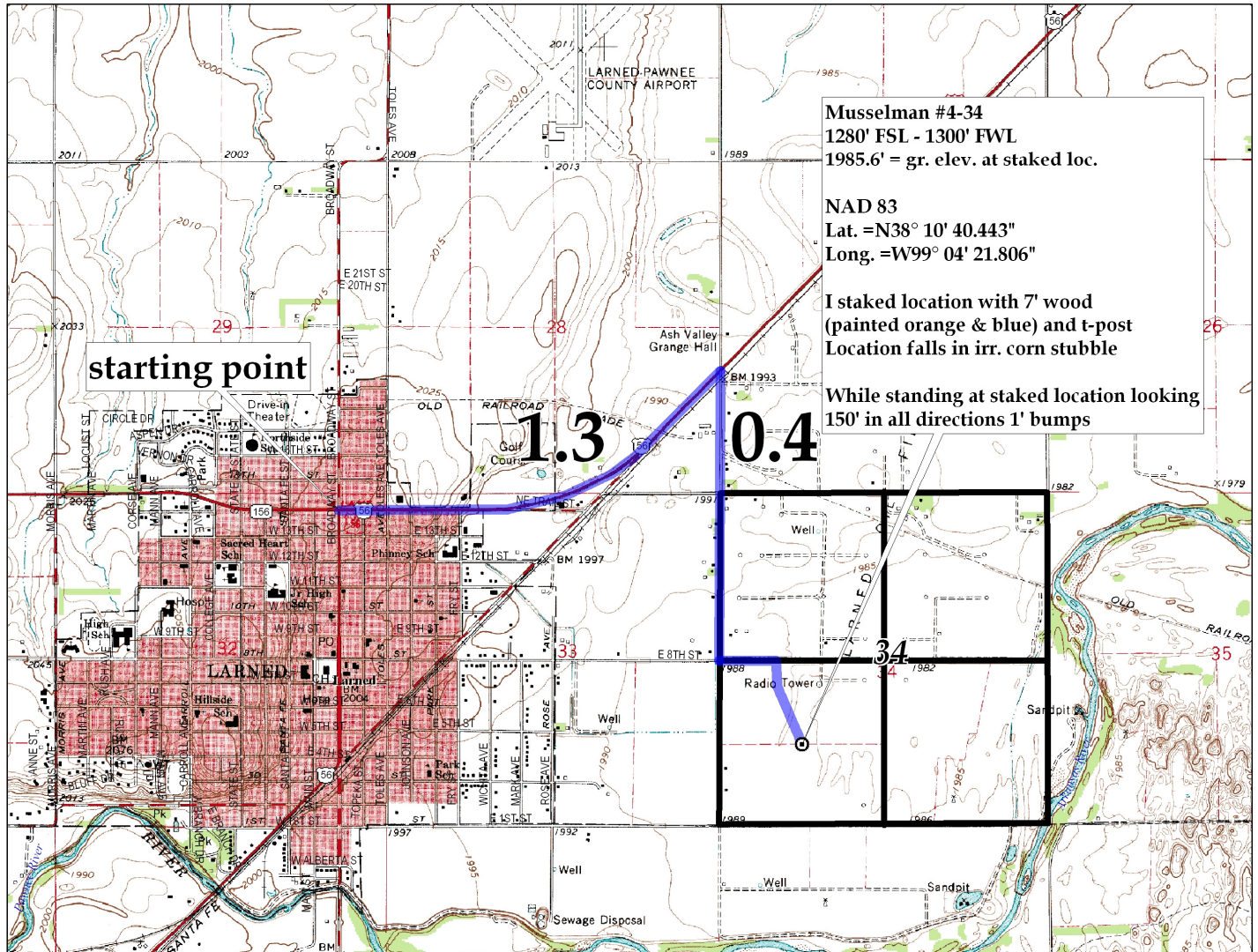
LOCATION SPOT



Directions: From the North side of Larned, KS, at the intersection of Hwy 56 South & Hwy 156 & Broadway St North – Now go 1.3 miles East & NE on combined Hwy 56 & 156 – Now go 0.4 miles South on 100th Ave to the NW corner of 34-21s-16w – Now go 0.5 mile South on 100th Ave – Now go 0.2 mile East on lease rd to ingress stake South into – Now go 0.1 mile South on lease rd to ingress stake SE into – Now go 0.2 SE on lease rd – Now go approx. 110' S-SE through irr. corn stubble into staked location.

Final ingress must be verified with land owner or Operator.

This drawing does not constitute a monumented survey or a land survey plat.
This drawing is for construction purposes only.



Musselman #4-34
1280' FSL - 1300' FWL
1985.6' = gr. elev. at staked loc.

NAD 83
Lat. =N38° 10' 40.443"
Long. =W99° 04' 21.806"

I staked location with 7' wood
(painted orange & blue) and t-post
Location falls in irr. corn stubble

While standing at staked location looking
150' in all directions 1' bumps

starting point

1.3

0.4

34

21

16